



MONDIALTECH

Forniture Industriali

Via Raimondo Dalla Costa 2403
41100 MODENA - ITALY
Tel. +39 059 250090 Fax. +39 059 260083
Codice R.E.A. 354046
Partita IVA E Codice Fiscale: 03061810366
e-Mail: mondialtech@mondialtech.net
Web: <http://www.mondialtech.net>

Vasto assortimento di Cuscinetti SKF - FAG

LK
Supporti & Quadri

CSC
Cuscinetti Sinterizzati

MONDIAL
Cuscinetti a Balli



Supporti Autoallineanti



MONDIALTECH srl è un'azienda specializzata nelle soluzioni tecniche per l'industria, con personale specializzato e la più ampia varietà di prodotti finalizzati alle diverse applicazioni garantendone la qualità adeguata alla giusta applicazione.

Dalla esperienza del proprio personale operante da diversi anni nel settore siamo in grado di soddisfare le più svariate necessità della clientela proponendo prodotti che per rapporto qualità/prezzo sono unici sul mercato.

MONDIALTECH srl is a company specialized in the technical solution for the industry, with specialistic staff and the widest variety than produced finalizes you to the various application guaranteeing some the quality adapted to the just application. From the just personal experience of operating one from various years in the field we are in a position to satisfying the most varied produced necessities of the customers proposing that for relationship quality/price is only on the market.





MONDIALTECH
Forniture Industriali

Via Raimondo Dalla Costa 240/b
41100 MODENA - ITALY
Tel. +39 059 250090 Fax. +39 059 260083
Codice R.E.A. 354046
Partita IVA E. Codice Fiscale: 03061810366
e-Mail: multicinfo@mondialtech.net
Web: <http://www.mondialtech.net>

Vasto assortimento di Cuscinetti SKF - FAG

LK
Supporti di Qualità

CSC
Cuscinetti Standard

MONDIAL
Cuscinetti a Balli

Grazie a magazzini costantemente riforniti ogni tipologia di prodotto è sempre disponibile in elevata quantità.

Thanks to warehouses constantly resupplied every types of product always available in are elevated amount.





MONDIALTECH
Forniture Industriali

Via Raimondo Dalla Costa 240/b
41100 MODENA - ITALY
Tel. +39 059 250090 Fax. +39 059 260083
Codice R.E.A. 354046
Partita IVA E Codice Fiscale: 03061810366
e-Mail: multicinfo@mondialtech.net
Web: <http://www.mondialtech.net>

Vasto assortimento di Cuscinetti SKF - FAG

LK
Pagamenti di Qualità

CSC
Credenziali Tecniche

MONDIAL
Cuscinetti e Balli

La qualità è garantita grazie ad accordi con Aziende produttrici certificate ed ai continui e costanti controlli effettuati da nostri tecnici sempre presenti presso i produttori.

The quality is guaranteed thanks to agreements with Companies certified manufacturers and to the continuous and constant controls it carries out to you from our always present technicians near the producers.





Indice

UCP serie 200
UCP serie 300
UCF serie 200
UCF serie 300
UCFL serie 200
UCFL serie 300
UCT serie 200
UCT serie 300
UCFC serie 200
UCC serie 200
UCPH serie 200
UCPA serie 200
UCPW serie 200
UCHA serie 200
UCFB serie 200
UCFA serie 200
SBFL serie 200
SAFL serie 200
SBFW serie 200
SBFD serie 200
SBPP – SAPP serie 200
SBPF – SAPF serie 200
SBPFT – SAPFT serie 200
SBPFL – SAPFL serie 200
UCPX
UCFX
UCFLX
UCTX
UCFCX
UC serie 200
UC serie 300
SB serie 200
SA serie 200
NA serie 200
UK serie 200
SER serie 200
UCX serie 200



SSUCP serie 200

SSUCF serie 200

SSUCFL serie 200

SSUCT serie 200

TP – P serie 200

TP – F serie 200

TP – FL serie 200

TP – PA serie 200

TP – T serie 200

TP – FB serie 200

ANELLI DI TENUTA

COPERCHI DI CHIUSURA

UP serie 000

UFL serie 000

U serie 000

ST 491A – ST 740

ST 491B

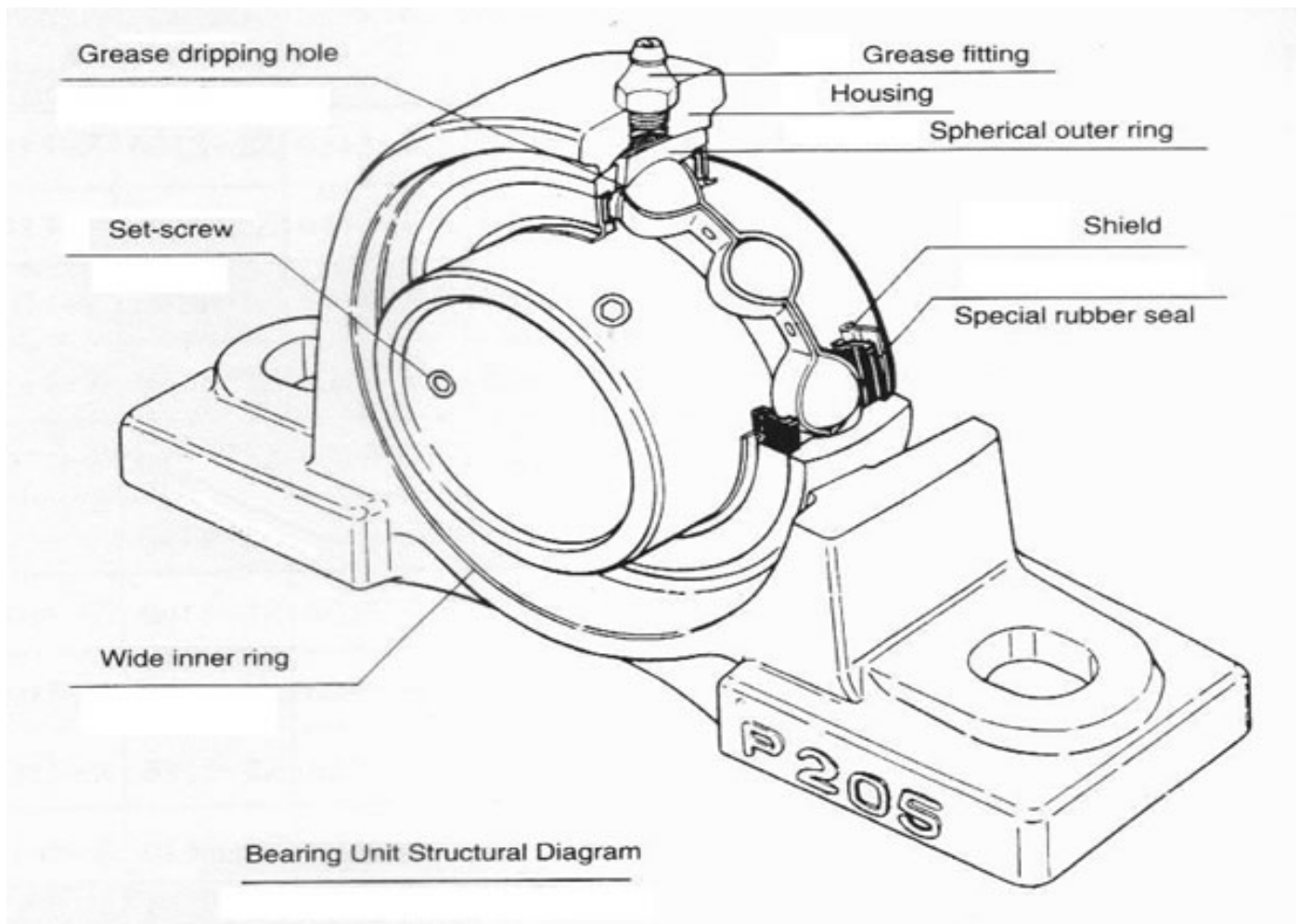


Caratteristiche

Il cuscinetto utilizzato è del tipo a doppia tenuta (2 RS) e con un singolo giro di sfere e viene inserito su vari tipi di corpo (ghisa o Acciaio Stampato).

Struttura del Supporto

La figura seguente mostra una sezione di un comune Supporto evidenziando tutte le parti che lo compongono.





Note:

1. Il cuscinetto monta sempre un sistema di bloccaggio sul corpo del Supporto per evitare le rotazioni dello stesso all'interno del corpo (vedi sfera di bloccaggio o perno antirotazione).
2. Esistoo sempre sull'anello interno due viti di arresto a 120 e 6T gradi per consentire di bloccare l'albero.

Caratteristiche del Prodotto

Autoallineamento

Il diametro esterno del cuscinetto è sferico e si abbina perfettamente al diametro interno dell'alloggiamento anch'esso sferico, consentendo così l'autoallineamento fra i due componenti. In questo modo si riescono a compensare anche gli eventuali errori di assemblaggio o di montaggio.

Capacità di Carico

I cuscinetti impiegati hanno le stesse caratteristiche dei tipi 6200 e 6300.

Tempo d'impiego

La durata del Supporto è determinata da luogo e dal metodo d'impiego dello stesso. Umidità e Temperature elevate incidono in modo determinante sulla durata. Per questa ragione è consigliabile lubrificare ogni tanto i supporti andando così a sostituire il grasso deteriorato all'interno del cuscinetto. Tali semplici operazioni aumentano sensibilmente la durata e le prestazioni del Supporto.

Efficienza delle tenute

Possiamo fornire vari tipi di tenute come da figure seguenti:

- 1, - RS+Metallo : il lubrificante è riparato dall'esterno da una tenuta in gomma NBR più metallo. Questa combinazione di tenuta consente una barriera efficace contro l'ingresso di sostanze estrene quali, vapore, polvere, fango, etc.. e evita la perdita di grasso garantendo sempre un buon funzionamento. Vedi figura 1.



MONDIALTECH
Forniture Industriali

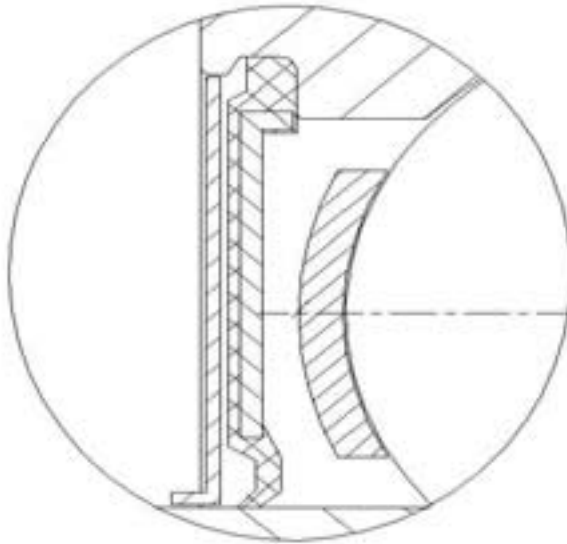
Via Raimondo Dalla Costa 240/b
41100 MODENA - ITALY
Tel. +39 059 250090 Fax. +39 059 260083
Codice R.E.A. 354046
Partita IVA E Codice Fiscale: 03061810366
e-Mail: monditecinfo@mondialtech.net
Web: <http://www.mondialtech.net>

Vasto assortimento di Cuscinetti SKF - FAG

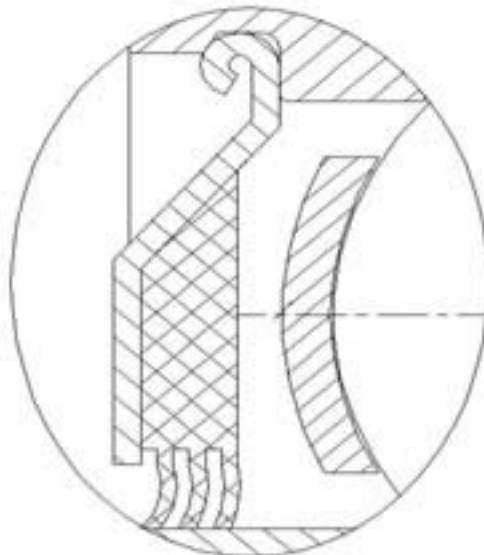
LK
Supporti di Qualità

CSC
Cuscinetti Specializzati

MONDIAL
Cuscinetti a Balli

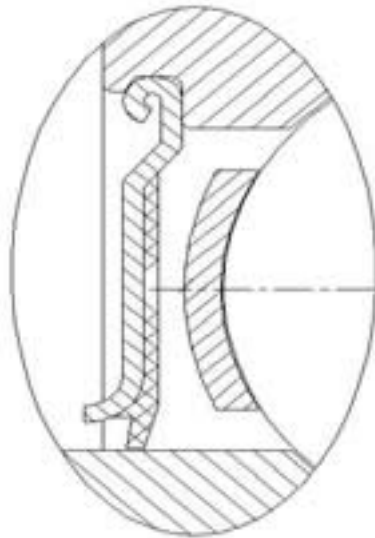


2, - Tipo a Triplo Labbro: lo schermo di metallo e la tenuta in NBR a triplo labbro consente una grande coppia di torsione ed un'ottima tenuta. E' particolarmente adatta nelle macchine agricole o sui profili difettosi. Vedi figura 2.





3, - Tipo RST : offre le stesse caratteristiche della versione 1 ma con diverso tipo di tenuta. Vedi figura 3.



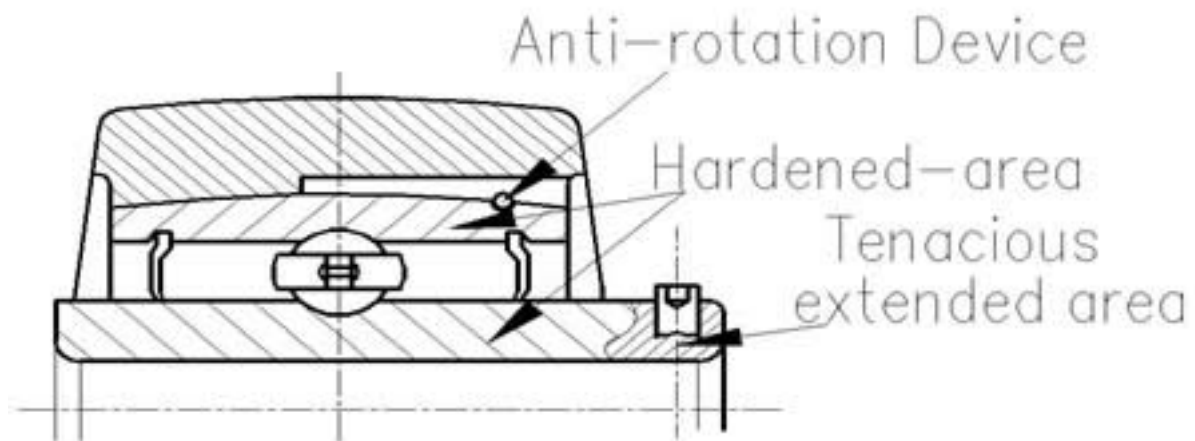
Corpo del Supporto

Il materiale del corpo è in fusione unica ciò consente la massima rigidità contro le deformazioni di montaggio e la massima resistenza all'usura in tutte le condizioni di montaggio.

Il cuscinetto può essere bloccato sull'albero facilmente

Ci sono tre metodi di bloccaggio del cuscinetto sugli alberi. Il metodo più comune è il bloccaggio con due viti dell'anello interno allungato. E' anche disponibile il bloccaggio con bussola e ghiera o quello con anello di bloccaggio. Con tutti questi metodi si può facilmente bloccare l'albero.

Trattamento Speciale sull'Anello Interno del Cuscinetto



Secondo lo schema come da figura 4 l'anello interno del cuscinetto è indurito sia sul canale di scorrimento delle sfere sia ovunque si rende necessario. La zona dell'anello interno dove sono collocati i fori per le viti di fissaggio sono stati temperati al fine di rendere più dura e resistente l'intera area. Questo trattamento termico consente migliori prestazioni al cuscinetto e impedisce alle viti di arresto di allentarsi durante il funzionamento, permettendo anche di stringere in modo energico le viti senza causare rotture del filetto o dell'anello interno.

Dispositivo antirotazione del cuscinetto

L'anello esterno del cuscinetto è dotato di un perno di bloccaggio o di una sfera che consente l'autoallineamento automatico dello stesso ed inoltre impedisce all'anello esterno di ruotare. Ciò può prolungare il tempo di durata del cuscinetto.

Sostituzione del Cuscinetto

Grazie alla perfetta esecuzione sia dell'anello esterno del cuscinetto che dell'alloggiamento sul supporto il cuscinetto può essere sostituito rapidamente ogni qualvolta lo si rende necessario.



MONDIALTECH
Forniture Industriali

Via Raimondo Dalla Costa 240/b
41100 MODENA - ITALY
Tel. +39 059 250090 Fax. +39 059 260083
Codice R.E.A. 354046
Partita IVA E. Codice Fiscale: 03061810366
e-Mail: mondialtech@mondialtech.net
Web: <http://www.mondialtech.net>

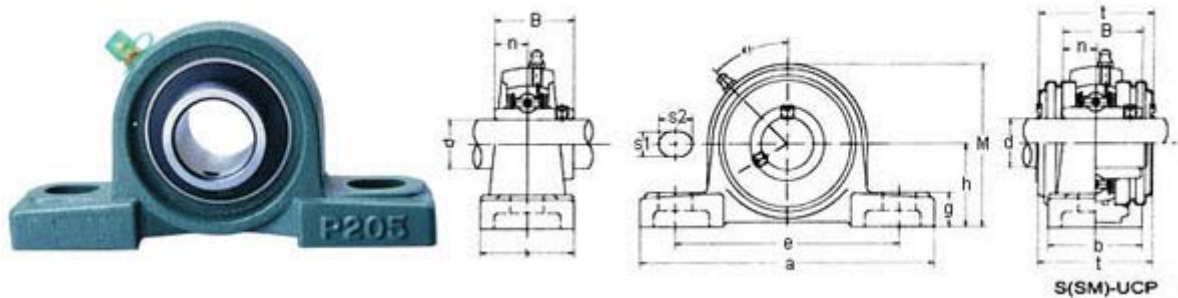
Vasto assortimento di Cuscinetti SKF - FAG

LK
Pignoni di Qualità

CSC
Cuscinetti Normali

MONDIAL
Cuscinetti a Balli

UCP serie 200



Tipo No.	d(mm)	h	a	e	b	s1	s2	g	w	t	B	n	Vite Tipo	Cuscinetto No.	Corpo No.	Peso (kg)
UCP201	12	30.2	127	95	38	13	19	14	62	44.5	31	12.7	M10	UC201	P203	0.69
UCP202	15	30.2	127	95	38	13	19	14	62	44.5	31	12.7	M10	UC202	P203	0.69
UCP203	17	30.2	127	95	38	13	19	14	62	44.5	31	12.7	M10	UC203	P203	0.68
UCP204	20	33.3	127	95	38	13	19	15	71	48	34.1	14.3	M10	UC204	P204	0.66
UCP205	25	36.5	140	105	38	13	19	15	71	48	34.1	14.3	M10	UC205	P205	0.81
UCP206	30	42.9	165	121	48	17	20	17	84	53	38.1	15.9	M14	UC206	P206	1.24
UCP207	35	47.6	167	127	48	17	20	18	93	59.5	42.9	17.5	M14	UC207	P207	1.58
UCP208	40	49.2	184	137	54	17	20	18	100	69	49.2	19	M14	UC208	P208	1.89
UCP209	45	54	190	146	54	17	20	20	106	69	49.2	19	M14	UC209	P209	2.14
UCP210	50	57.2	200	159	60	20	23	21	113	74.5	51.6	19	M16	UC210	P210	2.66
UCP211	55	63.5	219	171	60	20	23	23	125	76	55.6	22.2	M16	UC211	P211	3.31
UCP212	60	69.8	241	184	70	20	23	25	138	89	65.1	25.4	M16	UC212	P212	4.9
UCP213	65	76.2	265	203	70	25	28	27	150	89	65.1	25.4	M20	UC213	P213	5.15
UCP214	70	79.4	266	210	72	25	28	27	156		74.6	30.2	M20	UC214	P214	6.2
UCP215	75	82.6	275	217	74	25	28	28	162		77.8	33.3	M20	UC215	P215	7.16
UCP216	80	88.9	292	232	78	25	28	30	174		82.6	33.3	M20	UC216	P216	8.1
UCP217	85	95.2	310	247	83	25	28	32	185		85.7	34.1	M20	UC217	P217	9.81
UCP218	90	101.6	327	262	88	27	30	33	198		96	39.7	M22	UC218	P218	11.96



MONDIALTECH
Forniture Industriali

Via Raimondo Dalla Costa 240/b
41100 MODENA - ITALY
Tel. +39 059 250090 Fax. +39 059 260083
Codice R.E.A. 354046
Partita IVA E. Codice Fiscale: 03061810366
e-Mail: mondialtech@mondialtech.net
Web: <http://www.mondialtech.net>

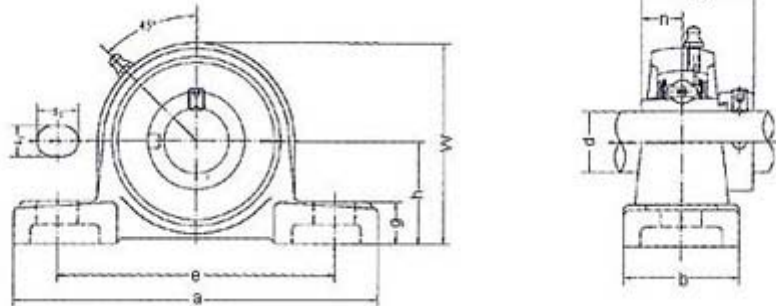
Vasto assortimento di Cuscinetti SKF - FAG

LK
Pignoni di Qualità

CSC
Cuscinetti Normali

MONDIAL
Cuscinetti a Rulli

UCP serie 300



Tipo No.	d	h	a	e	b	s1	s2	g	w	B	n	Vite Tipo	Cuscinetto No.	Corpo No.	Peso (kg)
UCP305	25	45	175	132	45	17	20	15	85	38	38	M14	UC305	P305	1.4
UCP306	30	50	180	140	50	17	20	18	95	43	17	M14	UC306	P306	1.8
UCP307	35	56	210	160	56	17	25	20	106	48	19	M14	UC307	P307	2.8
UCP308	40	60	220	170	60	20	27	22	116	52	19	M16	UC308	P308	3
UCP309	45	67	245	190	67	20	30	24	129	57	22	M16	UC309	P309	4.1
UCP310	50	75	275	212	75	20	35	27	143	61	22	M16	UC310	P310	5.8
UCP311	55	80	310	236	80	25	38	30	154	66	25	M20	UC311	P311	7.4
UCP312	60	85	330	250	85	25	38	32	165	71	26	M20	UC312	P312	9.4
UCP313	65	90	340	260	90	25	38	33	176	75	30	M20	UC313	P313	10
UCP314	70	95	360	280	90	27	40	35	187	78	33	M22	UC314	P314	12
UCP315	75	100	380	290	100	27	40	35	198	82	32	M22	UC315	P315	14
UCP316	80	106	400	300	110	27	40	40	210	86	34	M22	UC316	P316	18
UCP317	85	112	420	320	110	33	45	40	220	96	40	M27	UC317	P317	20
UCP318	90	118	430	330	110	33	45	45	235	96	40	M27	UC318	P318	24
UCP319	95	125	470	360	120	36	50	45	250	103	41	M30	UC319	P319	29



MONDIALTECH
Forniture Industriali

Via Raimondo Dalla Costa 240/b
41100 MODENA - ITALY
Tel. +39 059 250090 Fax: +39 059 260083
Codice R.E.A. 354046
Partita IVA E. Codice Fiscale: 03061810366
e-Mail: mondialtech@mondialtech.net
Web: <http://www.mondialtech.net>

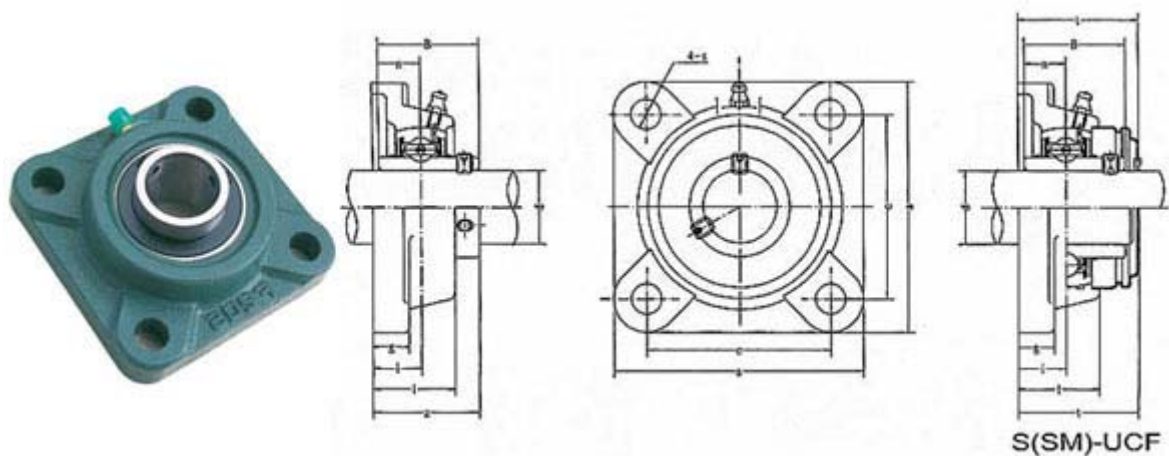
Vasto assortimento di Cuscinetti SKF - FAG

LK
Supporti di Qualità

CSC
Cuscinetti Standard

MONDIAL
Cuscinetti a Balli

UCF serie 200



Tipo No.	d	a	e	i	g	l	s	z	t	B	n	Vite Tipo	Cuscinetto No.	Corpo No.	Peso (kg)
UCF201	12	86	64	15	12	25.5	12	33.3	37.5	31	12.7	M10	UC201	F204	0.6
UCF202	15	86	64	15	12	25.5	12	33.3	37.5	31	12.7	M10	UC202	F204	0.59
UCF203	17	86	64	15	12	25.5	12	33.3	37.5	31	12.7	M10	UC203	F204	0.58
UCF204	20	86	64	15	12	25.5	12	33.3	37.5	34.1	14.3	M10	UC204	F204	0.56
UCF205	25	95	70	16	14	27	12	35.8	40	34.1	14.3	M10	UC205	F205	0.8
UCF206	30	108	83	18	14	31	12	40.2	44.5	38.1	15.9	M10	UC206	F206	1.12
UCF207	35	117	92	19	16	34	14	44.4	48.5	42.9	17.5	M12	UC207	F207	1.46
UCF208	40	130	102	21	16	36	16	51.2	55.5	49.2	19	M14	UC208	F208	1.84
UCF209	45	137	105	22	18	38	16	52.2	56.5	49.2	19	M14	UC209	F209	2.15
UCF210	50	143	111	22	18	40	16	54.6	59.5	51.6	19	M16	UC210	F210	2.42
UCF211	55	162	130	25	20	43	19	58.4	63	55.6	22.2	M16	UC211	F211	3.31
UCF212	60	175	143	29	20	48	19	68.7	73.5	65.1	25.4	M16	UC212	F212	4.28
UCF213	65	187	149	30	22	50	19	69.7	74.5	65.1	25.4	M16	UC213	F213	4.99
UCF214	70	193	152	31	22	54	19	75.4	81.5	74.6	30.2	M16	UC214	F214	5.85
UCF215	75	200	159	34	22	56	19	78.5	83.5	77.8	33.3	M16	UC215	F215	6.91
UCF216	80	208	165	34	22	58	23	83.3	88.5	82.6	33.3	M20	UC216	F216	7.5
UCF217	85	220	175	36	24	63	23	87.6	92.6	85.7	34.1	M20	UC217	F217	9.66
UCF218	90	235	187	40	24	68	23	96.3	101.5	96	39.7	M20	UC218	F218	12.06



MONDIALTECH
Forniture Industriali

Via Raimondo Dalla Costa 240/b
41100 MODENA - ITALY
Tel. +39 059 250090 Fax. +39 059 260083
Codice R.E.A. 354046
Partita IVA E. Codice Fiscale: 03061810366
e-Mail: mondialtech@mondialtech.net
Web: <http://www.mondialtech.net>

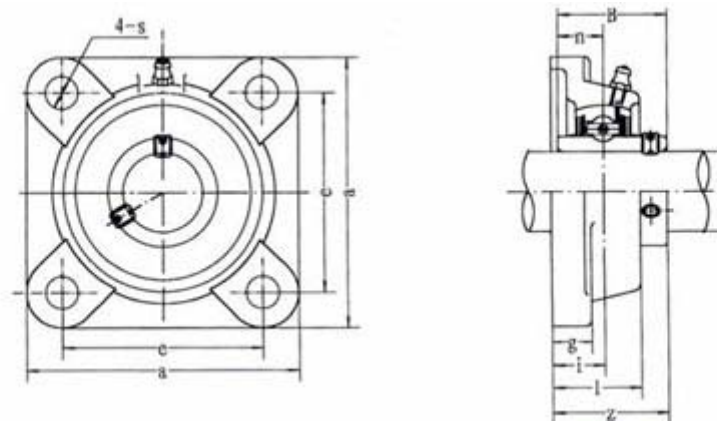
Vasto assortimento di Cuscinetti SKF - FAG

LK
Pignoni di Qualità

CSC
Cuscinetti Normalizzati

MONDIAL
Cuscinetti a Balli

UCF serie 300



Tipo No.	d	a	e	i	g	l	s	z	B	n	Vite Tipo	Cuscinetto No.	Corpo No.	Peso (kg)
UCF305	25	110	80	16	13	29	16	39	38	15	M14	UC305	F305	1.1
UCF306	30	125	95	18	15	32	16	44	43	17	M14	UC306	F306	1.6
UCF307	35	135	100	20	16	36	19	49	48	19	M16	UC307	F307	2
UCF308	40	150	112	23	17	40	19	56	52	19	M16	UC308	F308	2.7
UCF309	45	160	125	25	18	44	19	60	57	22	M16	UC309	F309	3.4
UCF310	50	175	132	28	19	48	23	67	61	22	M20	UC310	F310	4.5
UCF311	55	185	140	30	20	52	23	71	66	25	M20	UC311	F311	5.5
UCF312	60	195	150	33	22	56	23	78	71	26	M20	UC312	F312	6.5
UCF313	65	208	166	33	22	58	23	78	75	30	M20	UC313	F313	7.9
UCF314	70	226	178	36	25	61	25	81	78	33	M22	UC314	F314	9.5
UCF315	75	236	184	39	25	66	25	89	82	32	M22	UC315	F315	12
UCF316	80	250	196	38	27	68	31	90	86	34	M27	UC316	F316	14
UCF317	85	260	204	44	27	74	31	100	96	40	M27	UC317	F317	16
UCF318	90	280	216	44	30	76	35	100	96	40	M30	UC318	F318	19
UCF319	95	290	228	59	30	94	35	121	103	41	M30	UC319	F319	22



MONDIALTECH
Forniture Industriali

Via Raimondo Dalla Costa 240/b
41100 MODENA - ITALY
Tel. +39 059 250090 Fax: +39 059 260083
Codice R.E.A. 354046
Partita IVA E. Codice Fiscale: 03061810366
e-Mail: multitecinfo@mondialtech.net
Web: <http://www.mondialtech.net>

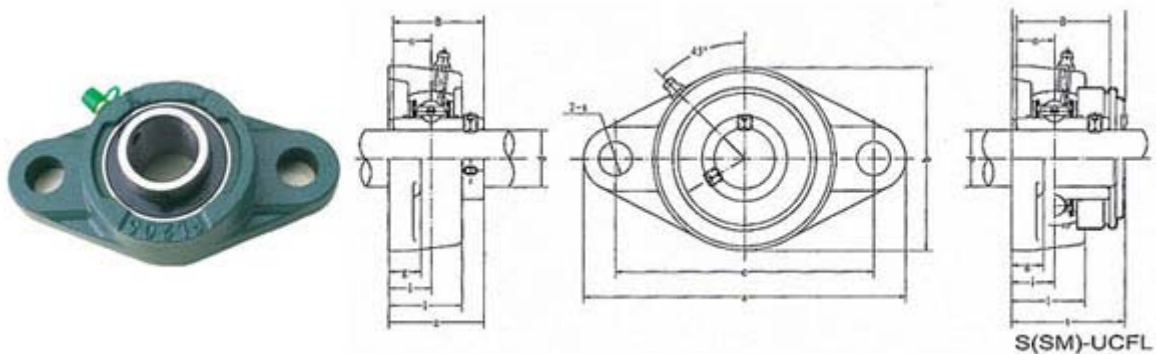
Vasto assortimento di Cuscinetti SKF - FAG

LK
Prestigi e Qualità

CSC
Cuscinetti Standard

MONDIAL
Cuscinetti a Balli

UCFL serie 200



Tipo No.	d	a	e	i	g	l	s	z	t	B	n	Vite Tipo	Cuscinetto No.	Corpo No.	Peso (kg)
UCFL201	12	113	90	15	11	25.5	12	33.3	37.5	31	12.7	M10	UC201	FL204	0.45
UCFL202	15	113	90	15	11	25.5	12	33.3	37.5	31	12.7	M10	UC202	FL204	0.44
UCFL203	17	113	90	15	11	25.5	12	33.3	37.5	31	12.7	M10	UC203	FL204	0.43
UCFL204	20	113	90	15	11	25.5	12	33.3	37.5	31	12.7	M10	UC204	FL204	0.41
UCFL205	25	130	99	16	13	27	16	35.7	40	34.1	14.3	M14	UC205	FL205	0.58
UCFL206	30	148	117	18	13	31	16	40.2	44.5	38.1	15.9	M14	UC206	FL206	0.86
UCFL207	35	161	130	19	14	34	16	44.4	48.5	42.9	17.5	M14	UC207	FL207	1.08
UCFL208	40	175	144	21	14	36	16	51.2	55.5	49.2	19	M14	UC208	FL208	1.44
UCFL209	45	188	148	22	15	38	19	52.2	56.5	49.2	19	M16	UC2059	FL209	1.74
UCFL210	50	197	157	22	15	40	19	54.6	59.5	51.6	19	M16	UC210	FL210	2.1
UCFL211	55	224	184	25	18	43	19	58.4	63	55.6	22.2	M16	UC211	FL211	2.91
UCFL212	60	250	202	29	18	48	23	68.7	73.5	65.1	25.4	M16	UC212	FL212	3.74
UCFL213	65	258	210	30	22	50	23	69.7	74.5	65.1	25.4	M20	UC213	FL21	4.57
UCFL214	70	265	216	31	22	54	23	75.4		74.6	30.2	M20	UC214	FL21	5.11
UCFL215	75	275	225	34	22	56	23	78.5		77.8	33.3	M20	UC215	FL21	5.37
UCFL216	80	290	233	34	22	58	25	83.3		82.6	33.3	M20	UC216	FL216	7.2
UCFL217	85	305	248	36	24	63	25	87.6		85.7	34.1	M22	UC217	FL217	8.61
UCFL218	90	320	265	40	24	68	25	96.3		96	39.7	M22	UC218	FL218	10.51



MONDIALTECH
Forniture Industriali

Via Raimondo Dalla Costa 240/b
41100 MODENA - ITALY
Tel. +39 059 250090 Fax. +39 059 260083
Codice R.E.A. 354046
Partita IVA E. Codice Fiscale: 03061810366
e-Mail: mondialtech@mondialtech.net
Web: <http://www.mondialtech.net>

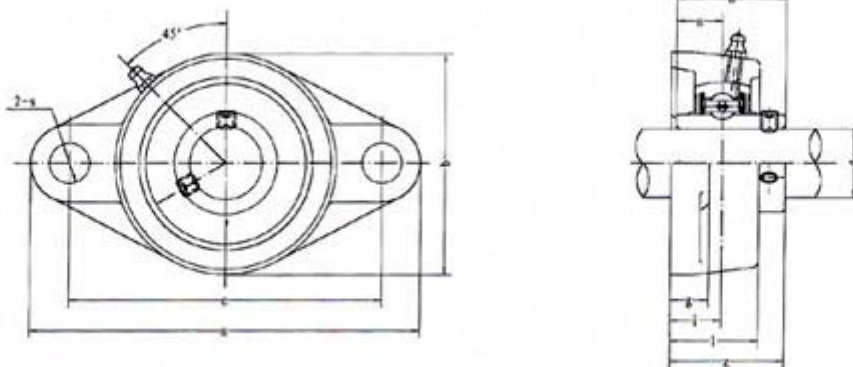
Vasto assortimento di Cuscinetti SKF - FAG

LK
Pignoni di Qualità

CSC
Cuscinetti Normali

MONDIAL
Cuscinetti a Balli

UCFL serie 300



Tipo No.	d	a	e	i	g	l	s	b	z	B	n	Vite Tipo	Cuscinetto No.	Corpo No.	Peso (kg)
UCFL305	25	150	113	16	13	29	19	80	39	38	15	M16	UC305	FL305	1.1
UCFL306	30	180	134	18	15	32	23	90	44	43	17	M20	UC306	FL306	1.6
UCFL307	35	185	141	20	16	36	23	100	49	48	19	M20	UC307	FL307	2
UCFL308	40	200	158	23	17	40	23	112	56	52	19	M20	UC308	FL308	2.7
UCFL309	45	230	177	25	18	44	25	125	60	57	22	M22	UC309	FL309	3.4
UCFL310	50	240	187	28	19	48	25	140	67	61	22	M22	UC310	FL310	4.4
UCFL311	55	250	198	30	20	52	25	150	71	66	25	M22	UC311	FL311	5.1
UCFL312	60	270	212	33	22	56	31	160	78	71	26	M27	UC312	FL312	6.1
UCFL313	65	295	240	33	25	58	31	175	78	75	30	M27	UC313	FL313	7.8
UCFL314	70	315	250	36	28	61	35	185	81	78	33	M20	UC314	FL314	9
UCFL315	75	320	260	39	30	66	35	195	89	82	32	M30	UC315	FL315	10
UCFL316	80	355	285	38	32	68	38	210	90	86	34	M33	UC316	FL316	13
UCFL317	85	370	300	44	32	74	38	220	100	96	40	M33	UC317	FL317	15
UCFL318	90	385	315	44	36	76	38	235	100	96	40	M33	UC318	FL318	18
UCFL319	95	405	330	59	40	94	41	250	121	103	41	M36	UC319	FL319	22



MONDIALTECH

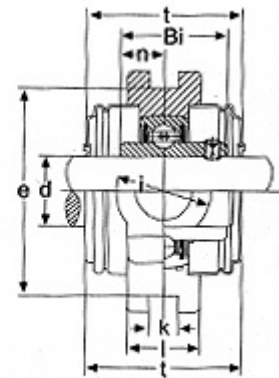
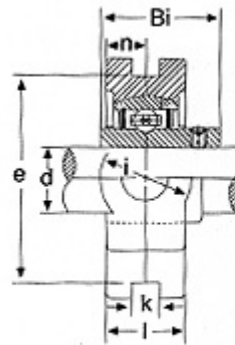
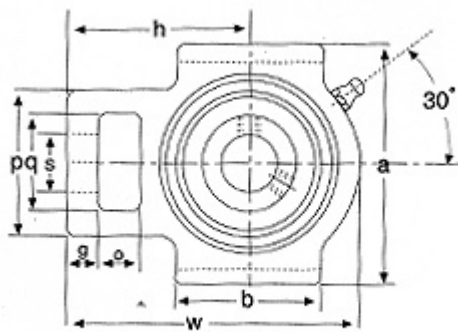
Forniture Industriali

Via Raimondo Dalla Costa 240/b
 41100 MODENA - ITALY
 Tel. +39 059 250090 Fax: +39 059 260083
 Codice R.E.A. 354046
 Partita IVA E Codice Fiscale: 03061810366
 e-Mail: mondialtech@mondialtech.net
 Web: <http://www.mondialtech.net>

Vasto assortimento di Cuscinetti SKF - FAG



UCT serie 200



S(SM)-UCT

Tipo No.	Albero diam. (mm)	Dimensioni (mm)															Peso (kg)	
		o	g	p	q	s	b	k	e	a	w	i	l	h	Bi	n		t
UCT201	12	15	10	51	32	19	51	12	76	89	94	32	21	61	31	12.7	44.5	0.80
UCT202	15	15	10	51	32	19	51	12	76	89	94	32	21	61	31	12.7	44.5	0.79
UCT203	17	15	10	51	32	19	51	12	76	89	94	32	21	61	31	12.7	44.5	0.78
UCT204	20	16	10	51	32	19	51	12	76	89	94	32	21	61	31	12.7	44.5	0.72
UCT205	25	16	10	51	32	19	51	12	76	89	97	32	24	62	34.1	14.3	48	0.8
UCT206	30	16	10	56	37	22	57	12	89	102	113	37	28	70	38.1	15.9	53	1.26
UCT207	35	16	13	64	37	22	64	12	89	102	129	37	30	78	42.9	17.5	59.5	1.68
UCT208	40	19	16	83	49	29	83	16	102	114	144	49	33	88	49.2	19	69	2.82
UCT209	45	19	16	83	49	29	83	16	102	117	144	49	35	87	49.2	19	69	2.52
UCT210	50	19	16	83	49	29	86	16	102	117	149	49	37	90	51.6	19	74.5	2.75
UCT211	55	25	19	102	64	35	95	22	130	146	171	64	38	106	55.6	22.2	76	4.1
UCT212	60	32	19	102	64	35	102	22	130	146	194	64	42	119	65.1	25.4	89	4.9
UCT213	65	32	21	111	70	41	121	26	151	167	224	70	44	137	65.1	25.4	89	6.7
UCT214	70	32	21	111	70	41	121	26	151	167	224	70	46	137	74.6	30.2		6.9
UCT215	75	32	21	111	70	41	121	26	151	167	232	70	48	140	77.8	33.3		7.4
UCT216	80	32	21	111	70	41	121	26	165	184	235	70	51	140	82.6	33.3		8.1
UCT217	85	38	19	124	73	48	157	30	173	198	260	73	54	162	85.7	34.1		11



MONDIALTECH

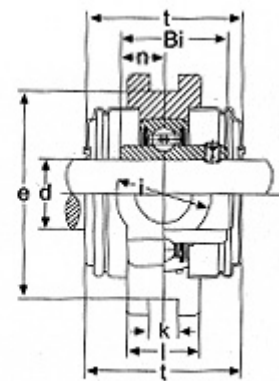
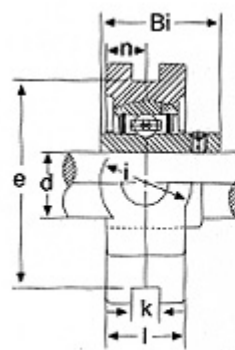
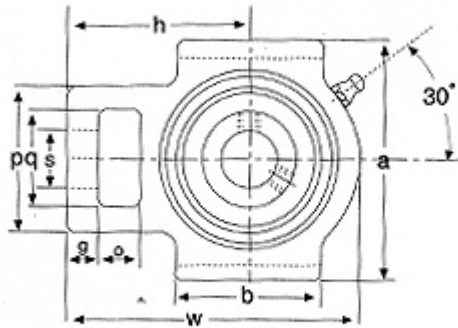
Forniture Industriali

Via Raimondo Dalla Costa 240/b
 41100 MODENA - ITALY
 Tel. +39 059 256090 Fax. +39 059 246083
 Codice R.E.A. 354046
 Partita IVA E. Codice Fiscale: 03661810366
 e-Mail: monditecinfo@mondialtech.net
 Web: <http://www.mondialtech.net>

Vasto assortimento di Cuscinetti SKF - FAG



UCT serie 300



S(SM)-UCT

Tipo No.	Albero diam. (mm)	Dimensioni (mm)															Peso (kg)
		o	g	p	q	s	b	k	e	a	w	i	l	h	Bi	n	
UCT305	25	16	12	62	36	26	65	12	80	89	122	36	26	76	38	15	1.41
UCT306	30	18	14	70	41	28	74	16	90	100	137	41	28	85	43	17	1.85
UCT307	35	20	15	75	45	30	80	16	100	110	150	45	32	94	48	19	2.45
UCT308	40	22	17	83	50	32	89	18	112	124	162	50	34	100	52	19	3.09
UCT309	45	24	18	90	55	34	97	18	125	138	178	55	38	110	57	22	4.08
UCT310	50	27	20	98	61	37	106	20	140	151	191	61	40	117	61	22	5.25
UCT311	55	29	21	105	66	39	115	22	150	163	207	66	44	127	66	25	6.41
UCT312	60	31	23	113	71	41	123	22	160	178	220	71	46	135	71	26	7.61
UCT313	65	32	25	116	70	43	134	26	170	190	238	80	50	146	75	30	9.22
UCT314	70	36	25	130	85	46	140	26	180	202	252	90	52	155	78	33	11.4
UCT315	75	36	25	132	85	46	150	26	192	216	262	90	55	160	82	32	12.9
UCT316	80	42	28	150	98	53	160	30	204	230	282	102	60	174	86	34	15.65
UCT317	85	42	30	152	98	53	170	32	214	240	298	102	64	183	96	40	19.34
UCT318	90	46	30	160	106	57	175	32	228	255	312	110	66	192	96	40	21.35
UCT319	95	46	31	165	106	57	180	35	240	270	322	110	72	197	103	41	24.4
UCT320	100	48	32	175	115	59	200	35	260	290	345	120	75	210	108	42	30.6
UCT321	105	48	32	175	115	59	200	35	260	290	345	120	75	210	112	44	30.2
UCT322	110	52	38	185	125	65	215	38	285	320	385	130	80	235	117	46	38.8
UCT324	120	60	42	210	140	70	230	45	320	355	432	140	90	267	126	51	54.6
UCT326	130	65	45	220	150	75	240	50	350	385	465	150	100	285	135	54	68.4
UCT328	140	70	50	230	160	80	255	50	380	415	515	155	100	315	145	59	83.2



MONDIALTECH
Forniture Industriali

Via Raimondo Dalla Costa 240/b
41100 MODENA - ITALY
Tel. +39 059 250090 Fax. +39 059 260083
Codice R.E.A. 354046
Partita IVA E. Codice Fiscale: 03061810366
e-Mail: multitecinfo@mondialtech.net
Web: <http://www.mondialtech.net>

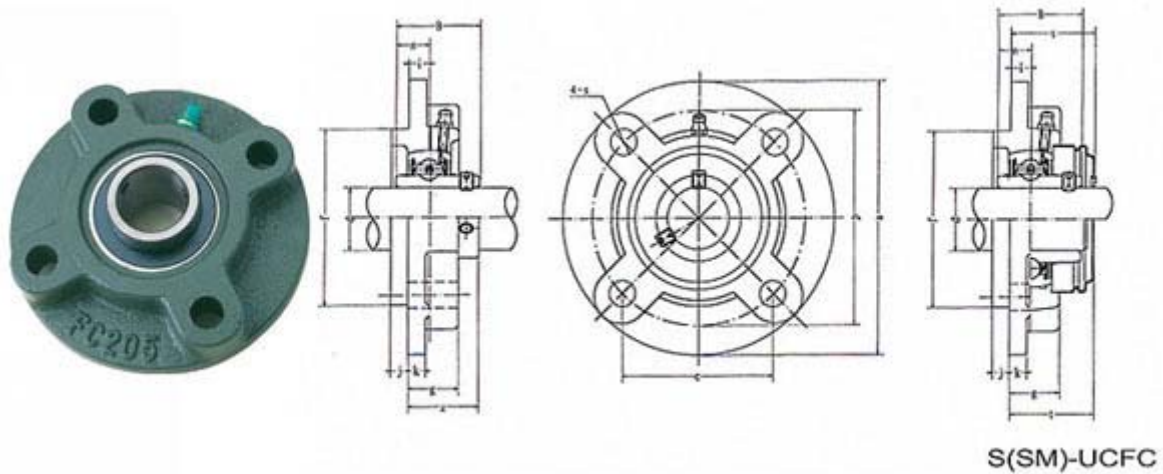
Vasto assortimento di Cuscinetti SKF - FAG

LK
Prepared to Order

CSC
Cuscinetti Standard

MONDIAL
Cuscinetti a Balli

UCFC serie 200



Tipo No.	d	a	p	e	i	s	j	k	g	f	z	B	n	Vite Tipo	Cuscinetto No.	Corpo No.	Peso (kg)
UCFC201	12	100	78	55.1	10	12	5	7	20.5	62	28.3	31	12.7	M10	UC201	FC204	0.73
UCFC202	15	100	78	55.1	10	12	5	7	20.5	62	28.3	31	12.7	M10	UC202	FC204	0.72
UCFC203	17	100	78	55.1	10	12	5	7	20.5	62	28.3	31	12.7	M10	UC203	FC204	0.71
UCFC204	20	100	78	55.1	10	12	5	7	20.5	62	28.3	31	12.7	M10	UC204	FC204	0.69
UCFC205	25	115	90	63.6	10	12	6	7	21	70	29.8	34.1	14.3	M10	UC205	FC205	1
UCFC206	30	125	100	70.7	10	12	8	8	23	80	32.2	38.1	15.9	M10	UC206	FC206	1.3
UCFC207	35	135	110	77.8	11	14	8	9	26	90	36.4	42.9	17.5	M12	UC207	FC207	1.81
UCFC208	40	145	120	84.8	11	14	10	9	26	100	41.2	49.2	19	M12	UC208	FC208	2.14
UCFC209	45	160	132	93.3	10	16	12	14	26	105	40.2	49.2	19	M14	UC209	FC209	2.68
UCFC210	50	165	138	97.6	10	16	12	14	28	110	42.6	51.6	19	M14	UC210	FC210	2.9
UCFC211	55	185	150	106.1	13	19	12	15	31	125	46.4	55.6	22.2	M16	UC211	FC211	4.01
UCFC212	60	195	160	113.1	17	19	12	15	36	135	56.7	65.1	25.4	M16	UC212	FC212	4.94
UCFC213	65	205	170	120.2	16	19	14	15	36	145	55.7	65.1	25.4	M16	UC213	FC213	5.65
UCFC214	70	215	177	125.1	17	19	14	18	40	150	61.4	74.6	30.2	M16	UC214	FC214	6.95
UCFC215	75	220	184	130.1	18	19	16	18	40	160	62.5	77.8	33.3	M16	UC215	FC215	7.56
UCFC216	80	240	200	141.4	18	23	16	18	42	170	67.3	82.6	33.3	M20	UC216	FC216	9.15
UCFC217	85	250	208	147.1	18	23	18	20	45	180	69.6	85.7	34.1	M20	UC217	FC217	10.81
UCFC218	90	265	220	155.5	22	23	18	20	50	190	78.3	96	39.7	M20	UC218	FC218	12.96



MONDIALTECH
Forniture Industriali

Via Raimondo Dalla Costa 240/b
41100 MODENA - ITALY
Tel. +39 059 256090 Fax. +39 059 260883
Codice R.E.A. 354046
Partita IVA E. Codice Fiscale: 03661810366
e-Mail: mondialtech@mondialtech.net
Web: <http://www.mondialtech.net>

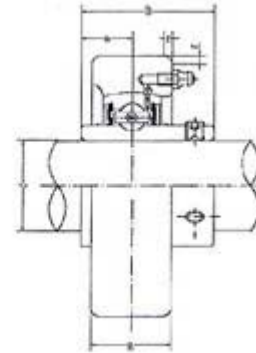
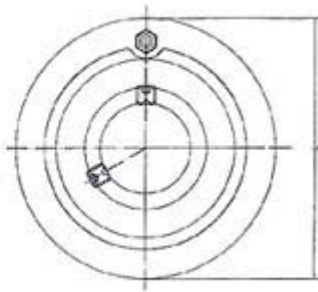
Vasto assortimento di Cuscinetti SKF - FAG

LK
Prestazioni di Qualità

CSC
Cuscinetti Standard

MONDIAL
Cuscinetti a Balli

UCC serie 200



Tipo No.	d	a	g	r	B	n	Cuscinetto No.	Corpo No.	Peso (kg)
UCC201	12	72	20	2	31	12.7	UC201	C204	0.52
UCC202	15	72	20	2	31	12.7	UC202	C204	0.51
UCC203	17	72	20	2	31	12.7	UC203	C204	0.5
UCC204	20	72	20	2	31	12.7	UC204	C204	0.48
UCC205	25	80	22	2	34.1	14.3	UC205	C205	0.63
UCC206	30	85	27	2	38.1	15.9	UC206	C206	0.8
UCC207	35	90	28	2	42.9	17.5	UC207	C207	0.93
UCC208	40	100	30	2.5	49.2	19	UC208	C208	1.22
UCC209	45	110	31	2.5	49.2	19	UC209	C209	1.49
UCC210	50	120	33	2.5	51.6	19	UC210	C210	1.9
UCC211	55	125	35	2.5	55.6	22.2	UC211	C211	2.18
UCC212	60	130	38	2.5	65.1	25.4	UC212	C212	2.52
UCC213	65	140	40	3	65.1	25.4	UC213	C213	2.98



MONDIALTECH
Forniture Industriali

Via Raimondo Dalla Costa 240/b
41100 MODENA - ITALY
Tel. +39 059 256090 Fax. +39 059 260883
Codice R.E.A. 354046
Partita IVA E Codice Fiscale: 03661810366
e-Mail: monditecinfo@mondialtech.net
Web: <http://www.mondialtech.net>

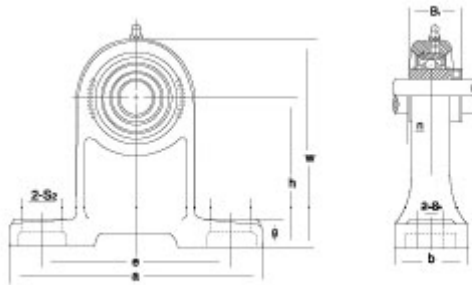
Vasto assortimento di Cuscinetti SKF - FAG

LK
Prestigi e Qualità

CSC
Cuscinetti Standard

MONDIAL
Cuscinetti a Balli

UCPH serie 200



Tipo No	Albero diam. (mm)	Dimensioni (mm)										Vite Tipo (mm)	Peso (kg)
		h	a	e	b	S1	S2	g	w	Bi	n		
UCPH202	15	70	127	95	40	13	19	15	100	27.4	11.5	M10	0.96
UCPH203	17	70	127	95	40	13	19	15	100	27.4	11.5	M10	0.96
UCPH204	20	70	127	95	40	13	19	15	101	31	12.7	M10	0.96
UCPH205	25	80	140	105	50	13	19	16	114	34.11	14.3	M10	1.20
UCPH206	30	90	165	121	50	17	21	18	130	38.1	15.9	M14	1.60
UCPH207	35	95	167	127	60	17	21	19	140	42.9	17.5	M14	2.00
UCPH208	40	100	184	137	70	17	25	19	149	49.2	19.0	M14	2.70
UCPH209	45	105	190	146	70	17	25	20	157	49.2	19.0	M14	3.00
UCPH210	50	110	206	159	70	20	25	22	165	51.6	19.0	M16	3.50
UCPH211	55	120	219	171	75	20	25	23	181	55.6	22.2	M16	5.47
UCPH212	60	130	235	186	85	20	25	24	197	65.1	25.4	M16	6.31



MONDIALTECH
Forniture Industriali

Via Raimondo Dalla Costa 240/b
41100 MODENA - ITALY
Tel. +39 059 250090 Fax. +39 059 260083
Codice R.E.A. 354046
Partita IVA E. Codice Fiscale: 03061810366
e-Mail: mondialinfo@mondialtech.net
Web: <http://www.mondialtech.net>

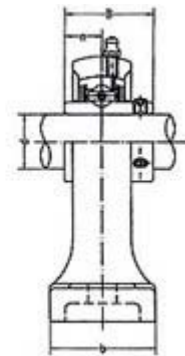
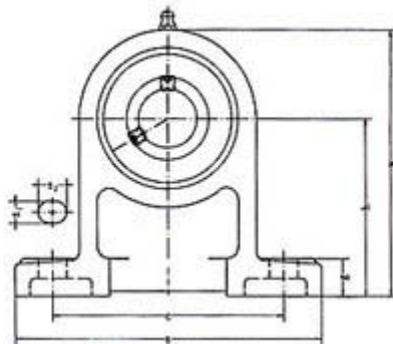
Vasto assortimento di Cuscinetti SKF - FAG

LK
Pignoni di Qualità

CSC
Cuscinetti Normalizzati

MONDIAL
Cuscinetti a Balli

UCPA serie 200



Tipo No.	d	h	a	e	b	s	g	w	B	n	Vite Tipo	Cuscinetto No.	Corpo No.	Peso (kg)
UCPA201	12	30.2	76	52	40	M10	15	62	31	12.7	M10	UC201	PA204	0.6
UCPA202	15	30.2	76	52	40	M10	15	62	31	12.7	M10	UC202	PA204	0.59
UCPA203	17	30.2	76	52	40	M10	15	62	31	12.7	M10	UC202	PA204	0.58
UCPA204	20	30.2	76	52	40	M10	15	62	31	12.7	M10	UC202	PA204	0.56
UCPA205	25	36.5	84	56	38	M10	15	72	34.1	14.3	M10	UC205	PA205	0.83
UCPA206	30	42.9	94	66	50	M14	18	84	38.1	15.9	M14	UC206	PA206	1.12
UCPA207	35	47.6	110	80	55	M14	20	95	42.9	17.5	M14	UC207	PA207	1.48
UCPA208	40	49.2	116	84	58	M14	20	100	49.2	19	M14	UC208	PA208	1.89
UCPA209	45	54.2	120	90	60	M14	25	108	49.2	19	M14	UC209	PA209	1.98
UCPA210	50	57.2	130	94	64	M16	25	116	51.6	19	M16	UC210	PA210	2.16
UCPA211	55	63.5	140	104	66	M16	25	125	55.6	22.2	M16	UC211	PA211	3.26
UCPA212	60	69.9	150	114	68	M16	25	138	65.1	25.4	M16	UC212	PA212	4.19
UCPA213	65	76.2	160	124	70	M16	25	150	65.1	25.4	M16	UC213	PA213	5.08



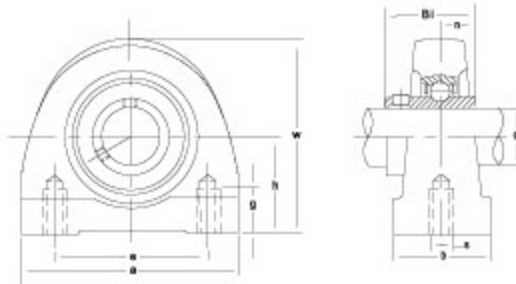
MONDIALTECH
Forniture Industriali

Via Raimondo Dalla Costa 240/b
41100 MODENA - ITALY
Tel. +39 059 256090 Fax. +39 059 260883
Codice R.E.A. 354046
Partita IVA E. Codice Fiscale: 03061810366
e-Mail: monditecinfo@mondialtech.net
Web: <http://www.mondialtech.net>

Vasto assortimento di Cuscinetti SKF - FAG

LK
CSC
MONDIAL

UCPW serie 200



Tipo No.	Albero diam.(mm)	Dimensioni (mm)								Vite Tipo mm	Peso (kg)
		h	a	e	d	g	w	Bi	n		
UCPW201	12	33.3	65	50.8	32	13	64	31	12.7	M8	0.8
UCPW202	15	33.3	65	50.8	32	13	64	31	12.7	M8	0.79
UCPW203	17	33.3	65	50.8	32	13	64	31	12.7	M8	0.77
UCPW204	20	33.3	65	50.8	32	13	64	31	12.7	M8	0.76
UCPW205	25	36.5	70	50.8	36	13	70	34.1	14.3	M10	0.91
UCPW206	30	42.9	98	76.2	38	16	82	38.1	15.9	M10	1.42
UCPW207	35	47.6	103	82.6	45	19	93	42.9	17.5	M10	1.91
UCPW208	40	49.2	116	88.9	47	19	99	49.2	19	M12	2.28
UCPW209	45	53.9	120	95.3	48	19	107	49.2	19	M12	2.61
UCPW210	50	57.2	135	101.6	54	22	115	51.6	19	M16	3.28



MONDIALTECH
Forniture Industriali

Via Raimondo Dalla Costa 240/b
41100 MODENA - ITALY
Tel. +39 059 256090 Fax. +39 059 260883
Codice R.E.A. 354046
Partita IVA E Codice Fiscale: 03661810366
e-Mail: multicinfo@mondialtech.net
Web: <http://www.mondialtech.net>

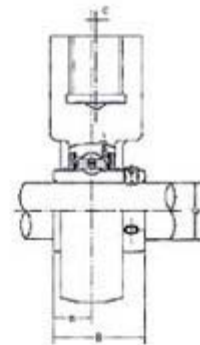
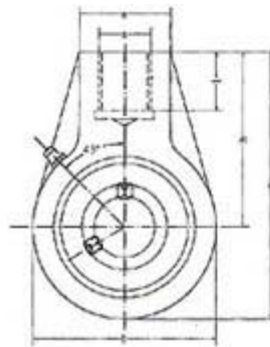
Vasto assortimento di Cuscinetti SKF - FAG

LK
Prepared to Order

CSC
Cuscinetti Standard

MONDIAL
Cuscinetti a Balli

UCHA serie 200



Tipo No.	d	h	w	b	c	a	s	i	B	n	Cuscinetto No.	Corpo No.	Peso (kg)
UCHA201	12	64	96	64	0	40	G-3/4	19	31	12.7	UC201	HA204	0.73
UCHA202	15	64	96	64	0	40	G-3/4	19	31	12.7	UC202	HA204	0.72
UCHA203	17	64	96	64	0	40	G-3/4	19	31	12.7	UC203	HA204	0.71
UCHA204	20	64	96	64	0	40	G-3/4	19	31	12.7	UC204	HA204	0.69
UCHA205	25	64	103	78	0	40	G-3/4	19	34.1	14.3	UC205	HA205	0.83
UCHA206	30	64	103	78	0	40	G-3/4	19	38.1	15.9	UC206	HA206	0.83
UCHA207	35	70	116	92	0	40	G-3/4	19	42.9	17.5	UC207	HA207	1.16
UCHA208	40	73	121	96	2	40	G-3/4	19	49.2	19	UC208	HA208	1.32
UCHA209	45	82	136	108	5	40	G-1	21	49.2	19	UC209	HA209	1.92
UCHA210	50	83	142	118	5	48	G1	21	51.6	19	UC210	HA210	1.9
UCHA211	55	87	150	126	7	60	G1-1/4	25	55.6	22.2	UC211	HA211	2.61
UCHA212	60	102	173	142	9	60	G1-1/4	28	65.1	25.4	UC212	HA212	3.54
UCHA213	65	117	200	166	9.5	70	G1-1/2	32	65.1	25.4	UC213	HA213	5.8



MONDIALTECH
Forniture Industriali

Via Raimondo Dalla Costa 240/b
41100 MODENA - ITALY
Tel. +39 059 250090 Fax. +39 059 260083
Codice R.E.A. 354046
Partita IVA E. Codice Fiscale: 03061810366
e-Mail: mondialtech@mondialtech.net
Web: <http://www.mondialtech.net>

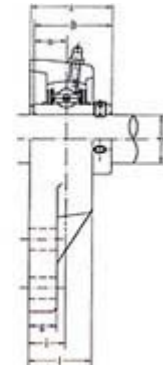
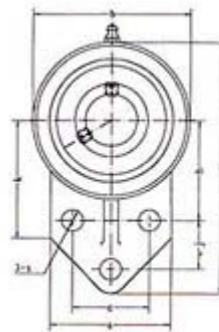
Vasto assortimento di Cuscinetti SKF - FAG

LK
Supporti di Qualità

CSC
Cuscinetti Normalizzati

MONDIAL
Cuscinetti a Balli

UCFB serie 200



Tipo No.	d	w	b	k	a	l	s	g	h	j	e	i	z	B	n	Vite Tipo	Cuscinetto No.	Corpo No.	Peso (kg)
UCFB201	12	110	62	52	52	25.5	10	13	42	27	32	15	33.3	31	12.7	M8	UC201	FB204	0.58
UCFB202	15	110	62	52	52	25.5	10	13	42	27	32	15	33.3	31	12.7	M8	UC202	FB204	0.57
UCFB203	17	110	62	52	52	25.5	10	13	42	27	32	15	33.3	31	12.7	M8	UC203	FB204	0.56
UCFB204	20	110	62	52	52	25.5	10	13	42	27	32	15	33.3	31	12.7	M8	UC204	FB204	0.54
UCFB205	25	116	68	52	56	27	10	13	45	27	34	16	35.8	34.1	14.3	M8	UC205	FB205	0.79
UCFB206	30	130	78	55	65	31	10	13	50	29	40	18	40.2	38.1	15.9	M8	UC206	FB206	0.95
UCFB207	35	144	90	62	70	34	10	15	55	32	46	19	44.4	42.9	17.5	M8	UC207	FB207	1.29
UCFB208	40	164	100	72	78	36	12	16	60	41	50	21	51.2	49.2	19	M10	UC208	FB208	1.78
UCFB209	45	174	106	76	80	38	12	18	65	43	54	22	52.2	49.2	19	M10	UC209	FB209	1.91
UCFB210	50	184	112	82	86	40	12	18	68	46	58	22	54.6	51.6	19	M10	UC210	FB210	2.36
UCFB211	55	207	130	86	90	43	14	18	78	50	62	25	58.4	55.6	22.2	M12	UC211	FB211	3.15
UCFB212	60	223	140	90	94	48	14	18	84	55	66	29	68.7	65.1	25.4	M12	UC212	FB212	3.99
UCFB213	65	244	155	94	100	50	14	20	92	60	70	30	69.7	65.1	25.4	M12	UC213	FB213	5.21



MONDIALTECH
Forniture Industriali

Via Raimondo Dalla Costa 240/b
41100 MODENA - ITALY
Tel. +39 059 250090 Fax. +39 059 260083
Codice R.E.A. 354046
Partita IVA E. Codice Fiscale: 03061810366
e-Mail: mondialtech@mondialtech.net
Web: <http://www.mondialtech.net>

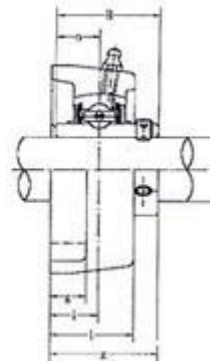
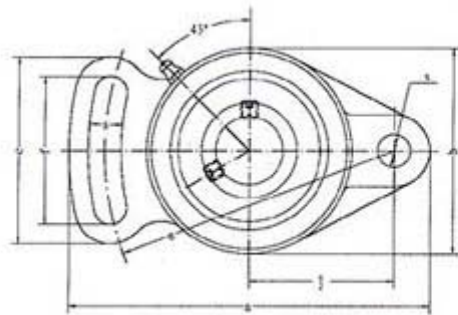
Vasto assortimento di Cuscinetti SKF - FAG

LK
Prepared to Order

CSC
Cuscinetti Standard

MONDIAL
Cuscinetti a Balli

UCFA serie 200



Tipo No.	d	a	e	i	g	l	s	b	z	f	c	B	n	Vite Tipo	Cuscinetto No.	Corpo No.	Peso (kg)
UCFA201	12	98	78	15	12	25.5	10	60	33.3	40	50	31	12.7	M8	UC201	FA204	0.5
UCFA202	15	98	78	15	12	25.5	10	60	33.3	40	50	31	12.7	M8	UC202	FA204	0.49
UCFA203	17	98	78	15	12	25.5	10	60	33.3	40	50	31	12.7	M8	UC203	FA204	0.48
UCFA204	20	98	78	15	12	25.5	10	60	33.3	40	50	31	12.7	M8	UC204	FA204	0.46
UCFA205	25	124	98	16	14	27	13	70	35.8	51	65	34.1	14.3	M10	UC205	FA205	0.66
UCFA206	30	141	115	18	14	31	13	83	40.2	58	72	38.1	15.9	M10	UC206	FA206	0.93
UCFA207	35	155	128	19	16	34	15	96	44.4	66	82	42.9	17.5	M12	UC207	FA207	1.46
UCFA208	40	171	142	21	16	38	15	105	51.2	71	87	49.2	19	M12	UC208	FA208	1.78
UCFA209	45	179	146	22	18	40	17	111	52.2	72	90	49.2	19	M14	UC209	FA209	2.03
UCFA210	50	189	155	22	18	40	17	116	54.6	76	94	51.6	19	M14	UC210	FA210	2.23
UCFA211	55	216	182	25	20	44	17	133	58.4	86	104	55.6	22.2	M14	UC211	FA211	3.41
UCFA212	60	240	202	29	20	48	19	140	68.7	100	118	65.1	25.4	M16	UC212	FA212	4.14
UCFA213	65	250	210	30	20	50	19	155	69.7	102	122	65.1	25.4	M16	UC213	FA213	5.35



MONDIALTECH
Forniture Industriali

Via Raimondo Dalla Costa 240/b
41100 MODENA - ITALY
Tel. +39 059 256090 Fax: +39 059 260883
Codice R.E.A. 354046
Partita IVA E. Codice Fiscale: 03661810366
e-Mail: mondialtech@mondialtech.net
Web: <http://www.mondialtech.net>

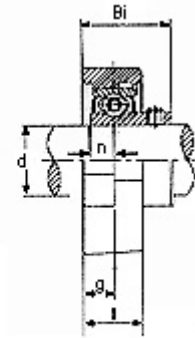
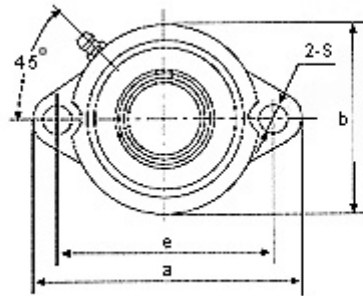
Vasto assortimento di Cuscinetti SKF - FAG

LK
Pignoni di Qualità

CSC
Cuscinetti Normali

MONDIAL
Cuscinetti a Balli

SBLF serie 200



♦SBLF

Tipo No.	Dimensioni (mm)											Vite Tipo (mm)	Cuscinetto No.	Corpo No.	Peso (kg)	
	Albero diam. (mm)	a	e	b	g	l	s	n	n1	Bi	d1				SBLF	SALF
SBLF201	12	81	63.5	56	9.5	18.0	8	6.0	6.5	25.5	28.6	M6	SB201	LF203	0.27	0.28
SBLF202	15	81	63.5	56	9.5	18.0	8	6.0	6.5	25.5	28.6	M6	SB202	LF203	0.25	0.28
SBLF203	17	81	63.5	56	9.5	18.0	8	6.0	6.5	25.5	28.6	M6	SB203	LF203	0.25	0.28
SBLF204	20	90	71.5	61	11.0	20.0	10	7.0	7.0	29.0	33.3	M8	SB204	LF204	0.33	0.33
SBLF205	25	95	76.0	64	11.0	20.0	10	7.5	7.5	30.5	38.1	M8	SB205	LF205	0.38	0.42
SBLF206	30	113	90.5	76	12.0	22.5	12	8.0	8.0	34.0	44.5	M10	SB206	LF206	0.56	0.60
SBLF207	35	122	100	89	13.0	24.0	12	8.5	8.5	36.5	55.6	M10	SB207	LF207	0.80	0.85



MONDIALTECH
Forniture Industriali

Via Raimondo Dalla Costa 240/b
41100 MODENA - ITALY
Tel. +39 059 250090 Fax. +39 059 260083
Codice R.E.A. 354046
Partita IVA E. Codice Fiscale: 03061810366
e-Mail: mondialtech@mondialtech.net
Web: <http://www.mondialtech.net>

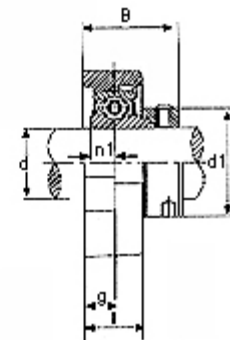
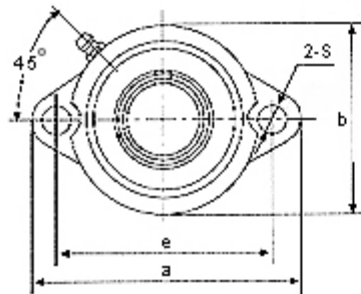
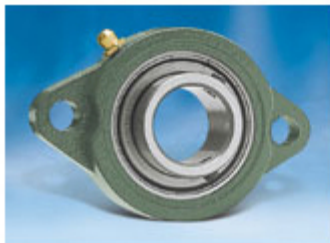
Vasto assortimento di Cuscinetti SKF - FAG

LK
Prestigiati di Qualità

CSC
Cuscinetti Standard

MONDIAL
Cuscinetti a Balli

SALF serie 200



•SALF

Tipo No.	Dimensioni (mm)											Vite Tipo (mm)	Cuscinetto No.	Corpo No.	Peso (kg)	
	Albero diam. (mm)	a	e	b	g	l	s	n	n1	B	d1				SBLF	SALF
SALF201	12	81	63.5	56	9.5	18.0	8	6.0	6.5	32.0	28.6	M6	SA201	LF203	0.27	0.28
SALF202	15	81	63.5	56	9.5	18.0	8	6.0	6.5	32.0	28.6	M6	SA202	LF203	0.25	0.28
SALF203	17	81	63.5	56	9.5	18.0	8	6.0	6.5	32.0	28.6	M6	SA203	LF203	0.25	0.28
SALF204	20	90	71.5	61	11.0	20.0	10	7.0	7.0	33.5	33.3	M8	SA204	LF204	0.33	0.33
SALF205	25	95	76.0	64	11.0	20.0	10	7.5	7.5	34.0	38.1	M8	SA205	LF205	0.38	0.42
SALF206	30	113	90.5	76	12.0	22.5	12	8.0	8.0	37.9	44.5	M10	SA206	LF206	0.56	0.60
SALF207	35	122	100	89	13.0	24.0	12	8.5	8.5	41.0	55.6	M10	SA207	LF207	0.80	0.85



MONDIALTECH
Forniture Industriali

Via Raimondo Dalla Costa 240/b
41100 MODENA - ITALY
Tel. +39 059 256090 Fax. +39 059 260883
Codice R.E.A. 354046
Partita IVA E. Codice Fiscale: 03661810366
e-Mail: monditecinfo@mondialtech.net
Web: <http://www.mondialtech.net>

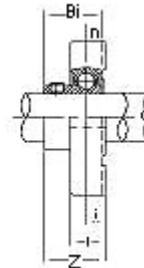
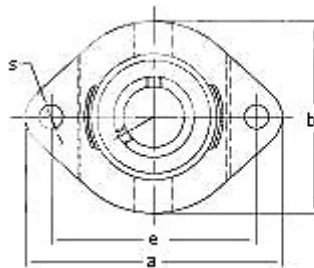
Vasto assortimento di Cuscinetti SKF - FAG

LK
Prestigi e Qualità

CSC
Cuscinetti Standard

MONDIAL
Cuscinetti a Balli

SBFW serie 200



Tipo No.	Albero diam. (mm)	Dimensioni (mm)									Vite Tipo mm	Peso (kg)
		a	e	i	l	s	b	z	Bi	n		
SBFW201	12	81	63.5	8.5	15	7	58.7	24.5	22	6	M6	0.28
SBFW202	15	81	63.5	8.5	15	7	58.7	24.5	22	6	M6	0.28
SBFW203	17	81	63.5	8.5	15	7	58.7	24.5	22	6	M6	0.26
SBFW204	20	90.5	71.4	9.5	17	9	66.5	27.5	25	7	M8	0.37
SBFW205	25	97	76.2	9.5	17.5	9	71	29	27	7.5	M8	0.44
SBFW206	30	112.5	90.5	11.5	20.5	12	84	32.5	30	8	M10	0.7
SBFW207	35	126	100	12.5	22	11.5	94	38	32	8.5	M10	0.91
SBFW208	40	148	119	14.5	25	13.5	104	43.5	34	9	M12	1.2



MONDIALTECH
Forniture Industriali

Via Raimondo Dalla Costa 240/b
41100 MODENA - ITALY
Tel. +39 059 256090 Fax. +39 059 260883
Codice R.E.A. 354046
Partita IVA E. Codice Fiscale: 03661810366
e-Mail: mondialtech@mondialtech.net
Web: <http://www.mondialtech.net>

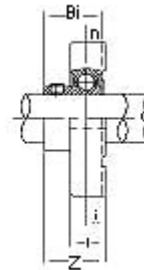
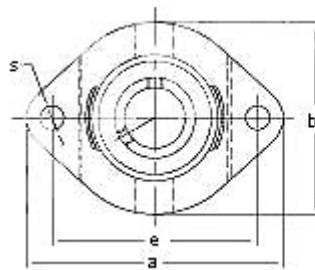
Vasto assortimento di Cuscinetti SKF - FAG

LK
Prestigi e Qualità

CSC
Cuscinetti Standard

MONDIAL
Cuscinetti a Balli

SBFD serie 200



Tipo No.	Albero diam. (mm)	Dimensioni (mm)									Vite Tipo mm	Peso (kg)
		a	e	i	l	s	b	z	Bi	n		
SBFD201	12	81	63.5	8.5	15	7	58.7	24.5	22	6	M6	0.28
SBFD202	15	81	63.5	8.5	15	7	58.7	24.5	22	6	M6	0.28
SBFD203	17	81	63.5	8.5	15	7	58.7	24.5	22	6	M6	0.26
SBFD204	20	90.5	71.4	9.5	17	9	66.5	27.5	25	7	M8	0.37
SBFD205	25	97	76.2	9.5	17.5	9	71	29	27	7.5	M8	0.44
SBFD206	30	112.5	90.5	11.5	20.5	11.5	84	32.5	30	8	M10	0.7
SBFD207	35	126	100	12.5	22	11.5	94	38	32	8.5	M10	0.91
SBFD208	40	148	119	14.5	25	13.5	104	43.5	34	9	M12	1.2



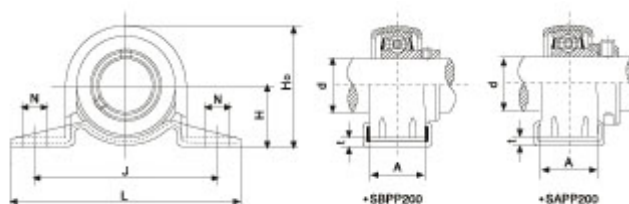
MONDIALTECH
Forniture Industriali

Via Raimondo Dalla Costa 240/b
41100 MODENA - ITALY
Tel. +39 059 256090 Fax: +39 059 260883
Codice R.E.A. 354046
Partita IVA E. Codice Fiscale: 03061810366
e-Mail: mondialtech@mondialtech.net
Web: <http://www.mondialtech.net>

Vasto assortimento di Cuscinetti SKF - FAG

LK
CSC
MONDIAL

SBPP – SAPP serie 200



Tipo No.	Dimensioni (mm)								Vite Tipo (mm)	Cuscinetto No.	Peso (Kg.)
	d	H	J	L	A	N	t	Ho			
PP201	12	22.2	68	86	14	9.5	2.4	43.8	M8	SB201 SA201	0.06
PP202	15	22.2	68	86	14	9.5	2.4	43.8	M8	SB202 SA202	0.06
PP203	17	22.2	68	86	14	9.5	2.4	43.8	M8	SB203 SA203	0.06
PP204	20	25.4	76	98	18.2	9.5	3	50.5	M8	SB204 SA204	0.1
PP205	25	28.6	86	108	19.2	11.5	4.0	56.5	M10	SB205 SA205	0.13
PP206	30	33.3	95	117	21.8	11.5	4.0	66.1	M10	SB206 SA206	0.17
PP207	35	39.7	106	129	23	11.5	5	78.0	M10	SB207 SA207	0.2
PP208	40	43.7	120	148	24.5	12	5	86.5	M10	SB207 SA207	0.3
PP209	45	46.8	128	156	31.5	13	6	93.5	M10	SB207 SA207	0.4



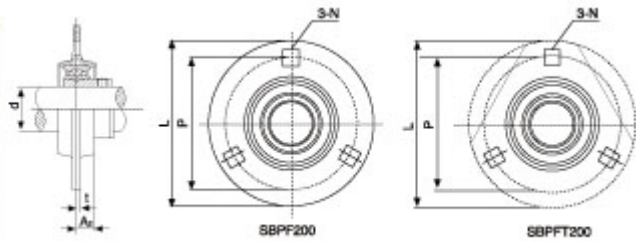
MONDIALTECH
Forniture Industriali

Via Raimondo Dalla Costa 240/b
41100 MODENA - ITALY
Tel. +39 059 256090 Fax: +39 059 260883
Codice R.E.A. 354046
Partita IVA E. Codice Fiscale: 03661810366
e-Mail: mondialtech@mondialtech.net
Web: <http://www.mondialtech.net>

Vasto assortimento di Cuscinetti SKF - FAG

LK
CSC
MONDIAL

SBPF – SAPF serie 200



Tipo No.	Dimensioni (mm)						Vite Tipo (mm)	Cuscinetto No.	Peso (kg)
	d	L	P	A2	t	N			
PF201	12	81	63.5	7	2	7	1/4	SA201 SB201	0.14
PF202	15	81	63.5	7	2	7	1/4	SA202 SB202	0.14
PF203	17	81	63.5	7	2	7	1/4	SA203 SB203	0.14
PF204	20	90	71	8	2	9	5/16	SA204 SB204	0.14
PF205	25	95	76	9	2	9	5/16	SA205 SB205	0.17
PF206	30	113	90	9	2.5	11	3/8	SA206 SB206	0.20
PF207	35	122	100	10	2.5	11	3/8	SA207 SB207	0.30
PF208	40	148	119	11.5	3.5	13.5	1/2	SA208 SB208	0.34
PF209	45	150	120.5	11.5	3.5	13.5	1/2	SA209 SB209	0.64
PF210	50	157	127	12.5	4	13.5	1/2	SA210 SB210	
PF211	55	168	138	13	4	13.5	1/2	SA211 SB211	
PF212	60	177	148	14	4	13.5	1/2	SA212 SB212	



MONDIALTECH
Forniture Industriali

Via Raimondo Dalla Costa 240/b
41100 MODENA - ITALY
Tel. +39 059 256090 Fax. +39 059 260883
Codice R.E.A. 354046
Partita IVA E. Codice Fiscale: 03661810366
e-Mail: monditecinfo@mondialtech.net
Web: <http://www.mondialtech.net>

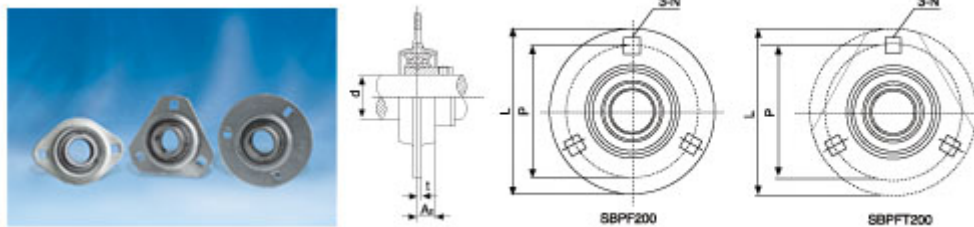
Vasto assortimento di Cuscinetti SKF - FAG

LK
Pagamenti & Qualità

CSC
Cuscinetti Standard

MONDIAL
Cuscinetti a Balli

SBPFT – SAPFT serie 200



Tipo No.	Dimensioni (mm)						Vite Tipo (mm)	Cuscinetto No.	Peso (kg)
	d	L	P	A2	t	N			
PFT201	12	81	63.5	7	2	7	1/4	SA201 SB201	0.14
PFT202	15	81	63.5	7	2	7	1/4	SA202 SB202	0.14
PFT203	17	81	63.5	7	2	7	1/4	SA203 SB203	0.14
PFT204	20	90	71	8	2	9	5/16	SA204 SB204	0.14
PFT205	25	95	76	9	2	9	5/16	SA205 SB205	0.17
PFT206	30	113	90	9	2.5	11	3/8	SA206 SB206	0.20
PFT207	35	122	100	10	2.5	11	3/8	SA207 SB207	0.30
PFT208	40	148	119	11.5	3.5	13.5	1/2	SA208 SB208	0.34
PFT209	45	150	120.5	11.5	3.5	13.5	1/2	SA209 SB209	0.64
PFT210	50	157	127	12.5	4	13.5	1/2	SA210 SB210	
PFT211	55	168	138	13	4	13.5	1/2	SA211 SB211	
PFT212	60	177	148	14	4	13.5	1/2	SA212 SB212	



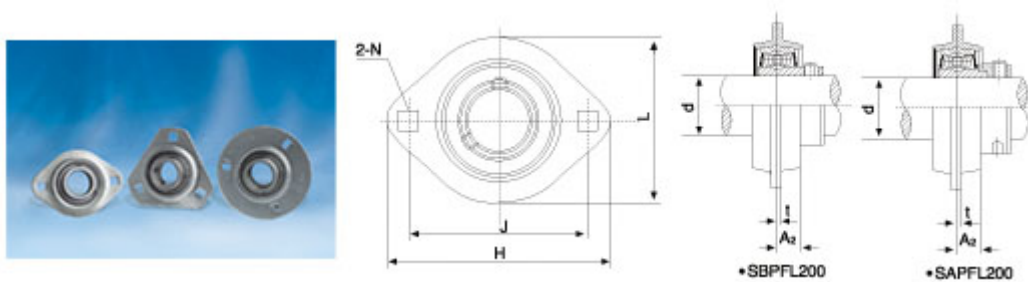
MONDIALTECH
Forniture Industriali

Via Raimondo Dalla Costa 240/b
41100 MODENA - ITALY
Tel. +39 059 256090 Fax. +39 059 260883
Codice R.E.A. 354046
Partita IVA E Codice Fiscale: 03061810366
e-Mail: monditecinfo@mondialtech.net
Web: <http://www.mondialtech.net>

Vasto assortimento di Cuscinetti SKF - FAG

LK
CSC
MONDIAL

SBPFL – SAPFL serie 200



Tipo No.	Dimensioni (mm)							Vite Tipo (mm)	Cuscinetto No.	Peso (kg)
	d	H	J	A2	L	N	t			
PFL201	12	81	63.5	7	59	7	2	1/4	SA201 SB201	0.09
PFL202	15	81	63.5	7	59	7	2	1/4	SA202 SB202	0.09
PFL203	17	81	63.5	7	59	7	2	1/4	SA203 SB203	0.09
PFL204	20	90	71.5	9	67	9	2	5/16	SA204 SB204	0.10
PFL205	25	95	76.0	9	71	9	2	5/16	SA205 SB205	0.12
PFL206	30	113	90.5	11	84	11	2.5	3/8	SA206 SB206	0.18
PFL207	35	125	100	11	94	11	2.5	3/8	SA207 SB207	0.2
PFL208	40	148	119	13.5	106	13.5	3.5	1/2	SA208 SB208	0.25



MONDIALTECH
Forniture Industriali

Via Raimondo Dalla Costa 240/b
41100 MODENA - ITALY
Tel. +39 059 250090 Fax. +39 059 260083
Codice R.E.A. 354046
Partita IVA E. Codice Fiscale: 03061810366
e-Mail: mondialtech@mondialtech.net
Web: <http://www.mondialtech.net>

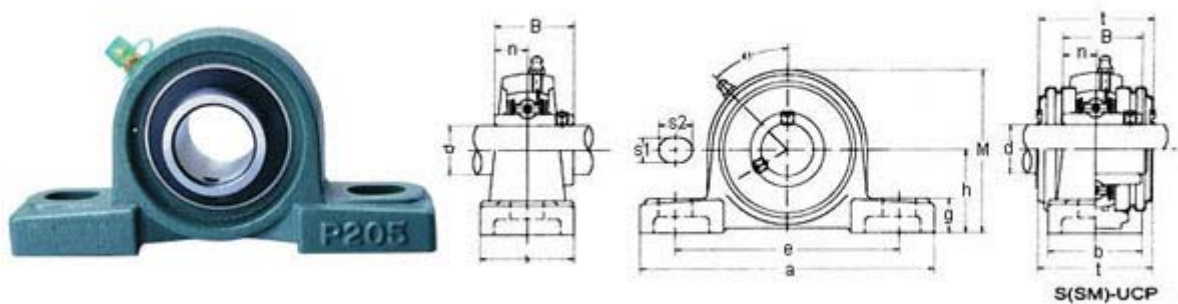
Vasto assortimento di Cuscinetti SKF - FAG

LK
Prepared to Order

CSC
Cuscinetti Standard

MONDIAL
Cuscinetti a Balli

UCPX



Tipo No.	Albero Diam.		Dimensioni (mm)										Vite Tipo (mm) (inch)	Peso (Kg)
	d(mm)	d(in)	h	a	e	b	s1	s2	g	M	Bi	n		
UCPX05	25		44.4	159	119	51	17	20	18	85	38.1	15.9	M14	1.5
UCPX05-13		13/16	1-3/4	6-1/4	4-11/16	2	43/64	25/32	23/32	3-11/32	1.5000	0.626	1/2	1.5
UCPX05-14		7/8	1-3/4	6-1/4	4-11/16	2	43/64	25/32	23/32	3-11/32	1.5000	0.626	1/2	1.5
UCPX05-15		15/16	1-3/4	6-1/4	4-11/16	2	43/64	25/32	23/32	3-11/32	1.5000	0.626	1/2	1.5
UCPX05-16		1	1-3/4	6-1/4	4-11/16	2	43/64	25/32	23/32	3-11/32	1.5000	0.626	1/2	1.5
UCPX06	30		47.6	175	127	57	17	20	20	93	42.9	17.5	M14	2.0
UCPX06-17		1-1/16	1-7/8	6-7/8	5	2-1/4	43/64	25/32	25/32	3-21/32	1.6890	0.689	1/2	2.0
UCPX06-18		1-1/8	1-7/8	6-7/8	5	2-1/4	43/64	25/32	25/32	3-21/32	1.6890	0.689	1/2	2.0
UCPX06-19		1-3/16	1-7/8	6-7/8	5	2-1/4	43/64	25/32	25/32	3-21/32	1.6890	0.689	1/2	2.0
UCPX06-20		1-1/4	1-7/8	6-7/8	5	2-1/4	43/64	25/32	25/32	3-21/32	1.6890	0.689	1/2	2.0
UCPX07	35		54.0	203	144	57	17	20	21	105	49.2	19	M14	2.6
UCPX07-21		1-5/16	2-1/8	8	5-21/32	2-1/4	43/64	25/32	13/16	4-1.8	1.9370	0.748	1/2	2.6
UCPX07-22		1-3/8	2-1/8	8	5-21/32	2-1/4	43/64	25/32	13/16	4-1.8	1.9370	0.748	1/2	2.6
UCPX07-23		1-7/16	2-1/8	8	5-21/32	2-1/4	43/64	25/32	13/16	4-1.8	1.9370	0.748	1/2	2.6
UCPX08	40		58.7	222	156	67	20	23	26	111	49.2	19	M16	3.3
UCPX08-24		1-1/2	2-5/16	8-3/4	6-5/32	2-5/8	25/32	29/32	1-1/32	4-3/8	1.9370	0.748	5/8	3.3
UCPX08-25		1-9/16	2-5/16	8-3/4	6-5/32	2-5/8	25/32	29/32	1-1/32	4-3/8	1.9370	0.748	5/8	3.3
UCPX09	45		58.7	222	156	67	20	23	26	116	51.6	19	M16	3.3



MONDIALTECH

Forniture Industriali

Via Raimondo Dalla Costa 240/b
41100 MODENA - ITALY
Tel. +39 059 250090 Fax: +39 059 240083
Codice R.E.A. 354046
Partita IVA E Codice Fiscale: 03061310366
e-Mail: monditecinfo@mondialtech.net
Web: <http://www.mondialtech.net>

Vasto assortimento di Cuscinetti SKF - FAG



Tipo No.	Albero Diam.		Dimensioni (mm)										Vite Tipo (mm) (inch)	Peso (Kg)
	d(mm)	d(in)	h	a	e	b	s1	s2	g	M	Bi	n		
UCPX09-26		1-5/8	2-5/16	8-3/4	6-5/32	2-5/8	25/32	29/32	1-1/32	4-9/16	2.0315	0.748	5/8	3.3
UCPX09-27		1-11/16	2-5/16	8-3/4	6-5/32	2-5/8	25/32	29/32	1-1/32	4-9/16	2.0315	0.748	5/8	3.3
UCPX09-28		1-3/4	2-5/16	8-3/4	6-5/32	2-5/8	25/32	29/32	1-1/32	4-9/16	2.0315	0.748	5/8	3.3
UCPX09-29		1-13/16	2-5/16	8-3/4	6-5/32	2-5/8	25/32	29/32	1-1/32	4-9/16	2.0315	0.748	5/8	3.3
UCPX10	50		63.5	241	171	73	20	23	27	126	55.6	22.2	M16	4.3
UCPX10-30		1-7/8	2-1/2	9-1/2	6-47/64	2-7/8	25/32	29/32	1-1/16	4-31/32	2.1890	0.874	5/8	4.3
UCPX10-31		1-15/16	2-1/2	9-1/2	6-47/64	2-7/8	25/32	29/32	1-1/16	4-31/32	2.1890	0.874	5/8	4.3
UCPX10-32		2	2-1/2	9-1/2	6-47/64	2-7/8	25/32	29/32	1-1/16	4-31/32	2.1890	0.874	5/8	4.3
UCPX11	55		69.8	260	184	79	25	28	30	137	65.1	25.4	M20	5.7
UCPX11-33		2-1/16	2-3/4	10-1/4	7-1/4	3-1/8	31/32	1-3/32	1-3/16	5-13/32	2.5630	1.000	3/4	5.7
UCPX11-34		2-1/8	2-3/4	10-1/4	7-1/4	3-1/8	31/32	1-3/32	1-3/16	5-13/32	2.5630	1.000	3/4	5.7
UCPX11-35		2-3/16	2-3/4	10-1/4	7-1/4	3-1/8	31/32	1-3/32	1-3/16	5-13/32	2.5630	1.000	3/4	5.7
UCPX11-36		2-1/4	2-3/4	10-1/4	7-1/4	3-1/8	31/32	1-3/32	1-3/16	5-13/32	2.5630	1.000	3/4	5.7
UCPX11-37		2-5/16	2-3/4	10-1/4	7-1/4	3-1/8	31/32	1-3/32	1-3/16	5-13/32	2.5630	1.000	3/4	5.7
UCPX12	60		76.2	286	203	83	25	28	33	151	65.1	25.4	M20	7.3
UCPX12-38		2-3/8	3	11-1/4	8	3-9/32	31/32	1-3/32	1-5/16	5-15/16	2.5630	1.000	3/4	7.3
UCPX12-39		2-7/16	3	11-1/4	8	3-9/32	31/32	1-3/32	1-5/16	5-15/16	2.5630	1.000	3/4	7.3
UCPX13	65		76.2	286	203	83	25	28	33	154	74.6	30.2	M20	7.6
UCPX13-40		2-1/2	3	11-1/4	8	3-9/32	63/64	1-3/32	1-5/16	6-1/16	2.9370	1.189	3/4	7.6
UCPX13-41		2-9/16	3	11-1/4	8	3-9/32	63/64	1-3/32	1-5/16	6-1/16	2.9370	1.189	3/4	7.6
UCPX14	70		88.9	330	229	89	27	30	35	170	77.8	33.3	M22	9.9
UCPX14-42		2-5/8	3-1/2	13	9-1/32	3-1/2	1-1/16	1-3/16	1-3/8	6-11/16	3.0630	1.311	7/8	9.9
UCPX14-43		2-11/16	3-1/2	13	9-1/32	3-1/2	1-1/16	1-3/16	1-3/8	6-11/16	3.0630	1.311	7/8	9.9
UCPX14-44		2-3/4	3-1/2	13	9-1/32	3-1/2	1-1/16	1-3/16	1-3/8	6-11/16	3.0630	1.311	7/8	9.9
UCPX15	75		88.9	330	229	89	27	30	35	175	82.6	33.3	M22	11
UCPX15-45		2-13/16	3-1/2	13	9-1/32	3-1/2	1-1/16	1-3/16	1-3/8	6-7/8	3.2520	1.311	7/8	11
UCPX15-46		2-7/8	3-1/2	13	9-1/32	3-1/2	1-1/16	1-3/16	1-3/8	6-7/8	3.2520	1.311	7/8	11
UCPX15-47		2-15/16	3-1/2	13	9-1/32	3-1/2	1-1/16	1-3/16	1-3/8	6-7/8	3.2520	1.311	7/8	11
UCPX15-48		3	3-1/2	13	9-1/32	3-1/2	1-1/16	1-3/16	1-3/8	6-7/8	3.2520	1.311	7/8	11
UCPX16	80		101.6	381	283	102	27	30	40	194	85.7	34.1	M22	15
UCPX16-49		3-1/16	4	15	11-5/32	4-1/32	1-1/16	1-3/16	1-9/16	7-5/8	3.3740	1.343	7/8	15
UCPX16-50		3-1/8	4	15	11-5/32	4-1/32	1-1/16	1-3/16	1-9/16	7-5/8	3.3740	1.343	7/8	15
UCPX16-51		3-3/16	4	15	11-5/32	4-1/32	1-1/16	1-3/16	1-9/16	7-5/8	3.3740	1.343	7/8	15



MONDIALTECH

Forniture Industriali

Via Raimondo Dalla Costa 240/b
 41100 MODENA - ITALY
 Tel. +39 059 250090 Fax: +39 059 260083
 Codice R.E.A. 354046
 Partita IVA E. Codice Fiscale: 03061810366
 e-Mail: monditecinfo@mondialtech.net
 Web: <http://www.mondialtech.net>



Vasto assortimento di Cuscinetti SKF - FAG

Tipo No.	Albero Diam.		Dimensioni (mm)										Vite Tipo (mm) (inch)	Peso (Kg)
	d(mm)	d(in)	h	a	e	b	s1	s2	g	M	Bi	n		
UCPX16-52		3-1/4	4	15	11-5/32	4-1/32	1-1/16	1-3/16	1-9/16	7-5/8	3.3740	1.343	7/8	15
UCPX17	85		101.6	381	283	102	27	30	40	200	96	39.7	M22	16
UCPX17-53		3-5/16	4	15	11-5/32	4-1/32	1-1/16	1-3/16	1-9/16	7-7/8	3.7795	1.563	7/8	16
UCPX17-55		3-7/16	4	15	11-5/32	4-1/32	1-1/16	1-3/16	1-9/16	7-7/8	3.7795	1.563	7/8	16



MONDIALTECH
Forniture Industriali

Via Raimondo Dalla Costa 240/b
41100 MODENA - ITALY
Tel. +39 059 250090 Fax. +39 059 260083
Codice R.E.A. 354046
Partita IVA E. Codice Fiscale: 03061810366
e-Mail: mondialtech@mondialtech.net
Web: <http://www.mondialtech.net>

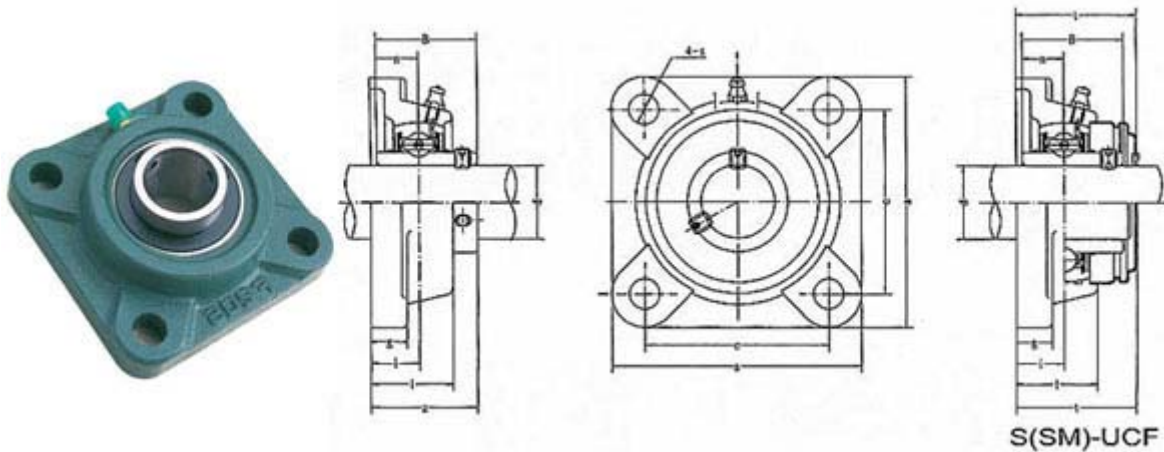
Vasto assortimento di Cuscinetti SKF - FAG

LK
Prestigi e Qualità

CSC
Cuscinetti Standard

MONDIAL
Cuscinetti a Balli

UCFX



Tipo No.	Albero Diam.		Dimensioni (mm)									Vite Tipo (mm) (inch)	Peso (Kg)
	d(mm)	d(in)	a	e	i	g	l	s	z	B	n		
UCFX05	25		108	83	18	13	30	12	40.2	38.1	15.9	M10	1.0
UCFX05-13		13/16	4-1/4	3-17/64	45/64	1/2	1-3/16	15/32	1-19/32	1.5000	0.626	3/8	1.0
UCFX05-14		7/8	4-1/4	3-17/64	45/64	1/2	1-3/16	15/32	1-19/32	1.5000	0.626	3/8	1.0
UCFX05-15		15/16	4-1/4	3-17/64	45/64	1/2	1-3/16	15/32	1-19/32	1.5000	0.626	3/8	1.0
UCFX05-16		1	4-1/4	3-17/64	45/64	1/2	1-3/16	15/32	1-19/32	1.5000	0.626	3/8	1.0
UCFX06	30		117	92	19	14	34	16	44.4	42.9	17.5	M14	1.7
UCFX06-17		1-1/16	4-39/64	3-58	3/4	9/16	1-11/32	5/8	1-3/4	1.6890	0.689	1/2	1.7
UCFX06-18		1-1/8	4-39/64	3-58	3/4	9/16	1-11/32	5/8	1-3/4	1.6890	0.689	1/2	1.7
UCFX06-19		1-3/16	4-39/64	3-58	3/4	9/16	1-11/32	5/8	1-3/4	1.6890	0.689	1/2	1.7
UCFX06-20		1-1/4	4-39/64	3-58	3/4	9/16	1-11/32	5/8	1-3/4	1.6890	0.689	1/2	1.7
UCFX07	35		130	102	21	14	38	16	51.2	49.2	19	M14	2.1
UCFX07-21		1-5/16	5-1/8	4-1/64	53/64	9/16	1-1/2	5/8	2-1/64	1.9370	0.748	1/2	2.1
UCFX07-22		1-3/8	5-1/8	4-1/64	53/64	9/16	1-1/2	5/8	2-1/64	1.9370	0.748	1/2	2.1
UCFX07-23		1-7/16	5-1/8	4-1/64	53/64	9/16	1-1/2	5/8	2-1/64	1.9370	0.748	1/2	2.1



MONDIALTECH

Forniture Industriali

Via Raimondo Dalla Costa 240/b
41100 MODENA - ITALY
Tel. +39 059 256090 Fax: +39 059 260083
Codice R.E.A. 354046
Partita IVA E Codice Fiscale: 03661810366
e-Mail: monditecinfo@mondialtech.net
Web: <http://www.mondialtech.net>

Vasto assortimento di Cuscinetti SKF - FAG



Tipo No.	Albero Diam.		Dimensioni (mm)									Vite Tipo (mm) (inch)	Peso (Kg)
	d(mm)	d(in)	a	e	i	g	l	s	z	B	n		
UCFX08	40		137	105	22	14	40	19	52.2	49.2	19	M16	2.4
UCFX08-24		1-1/2	5-13/32	4-9/64	55/64	9/16	1-9/16	3/4	2-1/64	1.9370	0.748	5/8	2.4
UCFX08-25		1-9/16	5-13/32	4-9/64	55/64	9/16	1-9/16	3/4	2-1/64	1.9370	0.748	5/8	2.4
UCFX09	45		143	111	23	14	40	19	55.6	51.6	19	M16	2.5
UCFX09-26		1-5/8	5-5/8	4-3.8	29/32	9/16	1-9/16	3/4	2-3/16	2.0315	0.748	5/8	2.5
UCFX09-27		1-11/16	5-5/8	4-3.8	29/32	9/16	1-9/16	3/4	2-3/16	2.0315	0.748	5/8	2.5
UCFX09-28		1-3/4	5-5/8	4-3.8	29/32	9/16	1-9/16	3/4	2-3/16	2.0315	0.748	5/8	2.5
UCFX09-29		1-13/16	5-5/8	4-3.8	29/32	9/16	1-9/16	3/4	2-3/16	2.0315	0.748	5/8	2.5
UCFX10	50		162	130	26	20	44	19	59.4	55.6	22.2	M16	3.9
UCFX10-30		1-7/8	6-3/8	5-1/8	1-1/32	25/32	1-23/32	3/4	2-11/32	2.1890	0.874	5/8	3.9
UCFX10-31		1-15/16	6-3/8	5-1/8	1-1/32	25/32	1-23/32	3/4	2-11/32	2.1890	0.874	5/8	3.9
UCFX10-32		2	6-3/8	5-1/8	1-1/32	25/32	1-23/32	3/4	2-11/32	2.1890	0.874	5/8	3.9
UCFX11	55		175	143	29	20	49	19	68.7	65.1	25.4	M16	4.9
UCFX11-33		2-1/16	6-57/64	5-5/8	1-9/64	25/32	1-15/16	3/4	2-45/64	2.5630	1.000	5/8	4.9
UCFX11-34		2-1/8	6-57/64	5-5/8	1-9/64	25/32	1-15/16	3/4	2-45/64	2.5630	1.000	5/8	4.9
UCFX11-35		2-3/16	6-57/64	5-5/8	1-9/64	25/32	1-15/16	3/4	2-45/64	2.5630	1.000	5/8	4.9
UCFX11-36		2-1/4	6-57/64	5-5/8	1-9/64	25/32	1-15/16	3/4	2-45/64	2.5630	1.000	5/8	4.9
UCFX11-37		2-5/16	6-57/64	5-5/8	1-9/64	25/32	1-15/16	3/4	2-45/64	2.5630	1.000	5/8	4.9
UCFX12	60		187	149	34	21	59	19	73.7	65.1	25.4	M16	5.2
UCFX12-38		2-3/8	7-23/64	5-55/64	1-11/32	13/16	2-5/16	3/4	2-29/32	2.5630	1.000	5/8	5.2
UCFX12-39		2-7/16	7-23/64	5-55/64	1-11/32	13/16	2-5/16	3/4	2-29/32	2.5630	1.000	5/8	5.2
UCFX13	65		187	149	34	21	59	19	78.4	74.6	30.2	M16	5.3
UCFX13-40		2-1/2	7-23/64	5-55/64	1-11/32	13/16	2-5/16	3/4	3-3/32	2.9370	1.189	5/8	5.3
UCFX13-41		2-9/16	7-23/64	5-55/64	1-11/32	13/16	2-5/16	3/4	3-3/32	2.9370	1.189	5/8	5.3
UCFX14	70		197	152	37	24	60	23	81.5	77.8	33.3	M20	7.3
UCFX14-42		2-5/8	7-3/4	5-63/64	1-29/64	15/16	2-3/8	29/32	3-13/64	3.0630	1.311	3/4	7.3
UCFX14-43		2-11/16	7-3/4	5-63/64	1-29/64	15/16	2-3/8	29/32	3-13/64	3.0630	1.311	3/4	7.3
UCFX14-44		2-3/4	7-3/4	5-63/64	1-29/64	15/16	2-3/8	29/32	3-13/64	3.0630	1.311	3/4	7.3
UCFX15	75		197	152	40	24	68	23	89.3	82.6	33.3	M20	8.1
UCFX15-45		2-13/16	7-3/4	5-63/64	1-37/64	15/16	2-11/16	29/32	3-33/64	3.2520	1.311	3/4	8.1
UCFX15-46		2-7/8	7-3/4	5-63/64	1-37/64	15/16	2-11/16	29/32	3-33/64	3.2520	1.311	3/4	8.1
UCFX15-47		2-15/16	7-3/4	5-63/64	1-37/64	15/16	2-11/16	29/32	3-33/64	3.2520	1.311	3/4	8.1
UCFX15-48		3	7-3/4	5-63/64	1-37/64	15/16	2-11/16	29/32	3-33/64	3.2520	1.311	3/4	8.1
UCFX16	80		214	171	40	24	70	23	91.6	85.7	34.1	M20	9.9
UCFX16-49		3-1/16	8-7/16	6-47/64	1-37/64	15/16	2-3/4	29/32	3-39/64	3.3740	1.343	3/4	9.9
UCFX16-50		3-1/8	8-7/16	6-47/64	1-37/64	15/16	2-3/4	29/32	3-39/64	3.3740	1.343	3/4	9.9



MONDIALTECH
Forniture Industriali

Via Raimondo Dalla Costa 240/b
41100 MODENA - ITALY
Tel. +39 059 250090 Fax. +39 059 260083
Codice R.E.A. 354046
Partita IVA E Codice Fiscale: 03061810366
e-Mail: monditecinfo@mondialtech.net
Web: <http://www.mondialtech.net>

Vasto assortimento di Cuscinetti SKF - FAG

LK
Pagamenti di Qualità

CSC
Cuscinetti Standard

MONDIAL
Cuscinetti a Balli

Tipo No.	Albero Diam.		Dimensioni (mm)									Vite Tipo (mm) (inch)	Peso (Kg)
	d(mm)	d(in)	a	e	i	g	l	s	z	B	n		
UCFX16-51		3-3/16	8-7/16	6-47/64	1-37/64	15/16	2-3/4	29/32	3-39/64	3.3740	1.343	3/4	9.9
UCFX16-52		3-1/4	8-7/16	6-47/64	1-37/64	15/16	2-3/4	29/32	3-39/64	3.3740	1.343	3/4	9.9
UCFX17	85		214	171	40	24	70	23	96.3	96	39.7	M20	11
UCFX17-53		3-5/16	8-7/16	6-47/64	1-37/64	15/16	2-3/4	29/32	3-25/32	3.7795	1.563	3/4	11
UCFX17-54		3-7/16	8-7/16	6-47/64	1-37/64	15/16	2-3/4	29/32	3-25/32	3.7795	1.563	3/4	11



MONDIALTECH
Forniture Industriali

Via Raimondo Dalla Costa 240/b
41100 MODENA - ITALY
Tel. +39 059 250090 Fax. +39 059 260083
Codice R.E.A. 354046
Partita IVA E. Codice Fiscale: 03061810366
e-Mail: mondialtech@mondialtech.net
Web: <http://www.mondialtech.net>

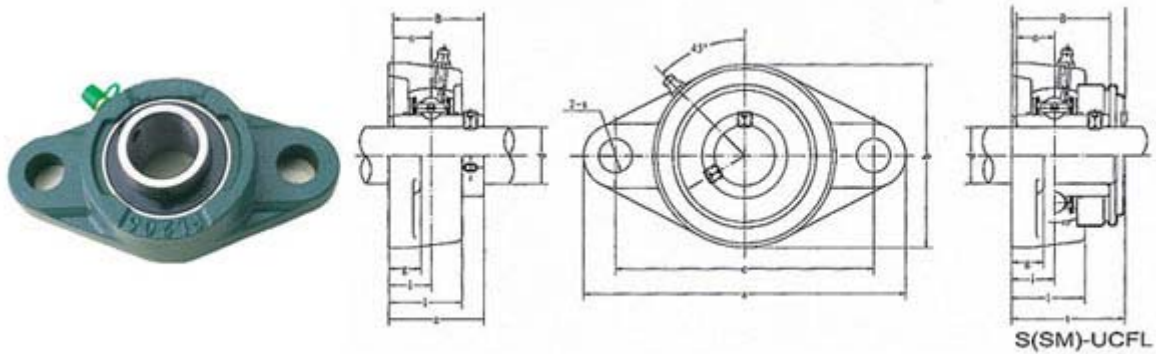
Vasto assortimento di Cuscinetti SKF - FAG

LK
Prepared to Order

CSC
Cuscinetti Standard

MONDIAL
Cuscinetti a Balli

UCFLX



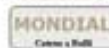
Tipo No.	Albero Diam. d (mm) (in)	Dimensioni (mm)(in)										Vite Tipo mm inch	Peso (kg)
		a	e	i	g	l	s	b	z	Bi	n		
UCFLX05	25	141	117	18	13	30	12	83	40.2	38.1	15.9	M10	1.0
UCFLX05-13	13/16	5-9/16	4-39/64	45/64	1/2	1-3/16	15/32	3-9/32	1-37/64	1.5000	0.626	3/8	1.0
UCFLX05-14	7/8	5-9/16	4-39/64	45/64	1/2	1-3/16	15/32	3-9/32	1-37/64	1.5000	0.626	3/8	1.0
UCFLX05-15	15/16	5-9/16	4-39/64	45/64	1/2	1-3/16	15/32	3-9/32	1-37/64	1.5000	0.626	3/8	1.0
UCFLX05-16	1	5-9/16	4-39/64	45/64	1/2	1-3/16	15/32	3-9/32	1-37/64	1.5000	0.626	3/8	1.0
UCFLX06	30	156	130	19	15	34	16	95	44.4	42.9	17.5	M14	1.5
UCFLX06-17	1-1/16	6-5/32	5-1/8	3/4	19/32	1-11/32	5/8	3-3/4	1-3/4	1.6890	0.689	1/2	1.5
UCFLX06-18	1-1/8	6-5/32	5-1/8	3/4	19/32	1-11/32	5/8	3-3/4	1-3/4	1.6890	0.689	1/2	1.5
UCFLX06-19	1-3/16	6-5/32	5-1/8	3/4	19/32	1-11/32	5/8	3-3/4	1-3/4	1.6890	0.689	1/2	1.5
UCFLX06-20	1-1/4	6-5/32	5-1/8	3/4	19/32	1-11/32	5/8	3-3/4	1-3/4	1.6890	0.689	1/2	1.5
UCFLX07	35	171	144	21	16	38	16	105	51.2	49.2	19	M14	2.0



MONDIALTECH

Forniture Industriali

Via Raimondo Dalla Costa 240/b
41100 MODENA - ITALY
Tel. +39 059 250090 Fax. +39 059 260083
Codice R.E.A. 354046
Partita IVA E. Codice Fiscale: 03061810366
e-Mail: monditecinfo@mondialtech.net
Web: <http://www.mondialtech.net>



Vasto assortimento di Cuscinetti SKF - FAG

Tipo No.	Albero Diam. d (mm) (in)	Dimensioni (mm)(in)										Vite Tipo mm inch	Peso (kg)
		a	e	i	g	l	s	b	z	Bi	n		
UCFLX07-21	1-5/16	6-23/32	5-43/64	53/64	5/8	1-1/2	5/8	4-1/8	2-1/64	1.9370	0.748	1/2	2.0
UCFLX07-22	1-3/8	6-23/32	5-43/64	53/64	5/8	1-1/2	5/8	4-1/8	2-1/64	1.9370	0.748	1/2	2.0
UCFLX07-23	1-7/16	6-23/32	5-43/64	53/64	5/8	1-1/2	5/8	4-1/8	2-1/64	1.9370	0.748	1/2	2.0
UCFLX08	40	179	148	22	16	40	16	111	52.2	49.2	19	M14	2.2
UCFLX08-24	1-1/2	7-1/16	5-53/64	55/64	5/8	1-9/16	5/8	4-3/8	2-1/16	1.9370	0.748	1/2	2.2
UCFLX08-25	1-9/16	7-1/16	5-53/64	55/64	5/8	1-9/16	5/8	4-3/8	2-1/16	1.9370	0.748	1/2	2.2
UCFLX09	45	189	157	23	16	40	16	116	55.6	51.6	19	M14	2.4
UCFLX09-26	1-5/8	7-7/16	6-3/16	29/32	5/8	1-37/64	5/8	4-9/16	2-3/16	2.0315	0.748	1/2	2.4
UCFLX09-27	1-11/16	7-7/16	6-3/16	29/32	5/8	1-37/64	5/8	4-9/16	2-3/16	2.0315	0.748	1/2	2.4
UCFLX09-28	1-3/4	7-7/16	6-3/16	29/32	5/8	1-37/64	5/8	4-9/16	2-3/16	2.0315	0.748	1/2	2.4
UCFLX09-29	1-13/16	7-7/16	6-3/16	29/32	5/8	1-37/64	5/8	4-9/16	2-3/16	2.0315	0.748	1/2	2.4
UCFLX10	50	216	184	26	18	44	19	133	59.4	55.6	22.2	M16	3.4
UCFLX10-30	1-7/8	8-1/2	7-1/4	1-1/32	23/32	1-23/32	3/4	5-1/4	2-11/32	2.1890	0.874	5/8	3.4
UCFLX10-31	1-15/16	8-1/2	7-1/4	1-1/32	23/32	1-23/32	3/4	5-1/4	2-11/32	2.1890	0.874	5/8	3.4
UCFLX10-32	2	8-1/2	7-1/4	1-1/32	23/32	1-23/32	3/4	5-1/4	2-11/32	2.1890	0.874	5/8	3.4



MONDIALTECH

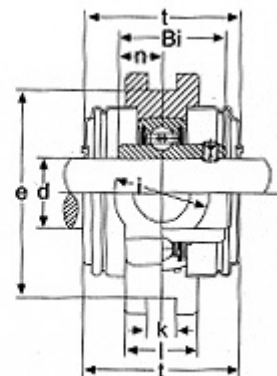
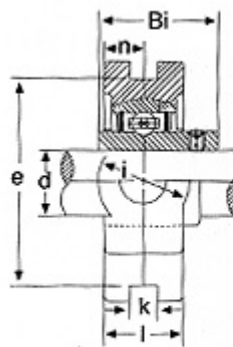
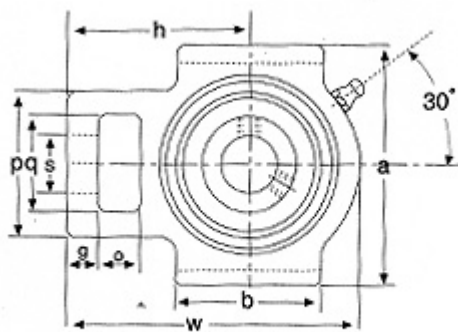
Forniture Industriali

Via Raimondo Dalla Costa 240/b
41100 MODENA - ITALY
Tel. +39 059 250090 Fax: +39 059 260083
Codice R.E.A. 354046
Partita IVA E. Codice Fiscale: 03061810366
e-Mail: monditecinfo@mondialtech.net
Web: http://www.mondialtech.net

Vasto assortimento di Cuscinetti SKF - FAG



UCTX



S(SM)-UCT

Tipo No.	Albero Diam.		Dimensioni (mm)															Peso (kg)
	d (mm)	d (in)	o	g	p	q	s	b	k	e	a	w	l	i	h	Bi	n	
UCTX05	25		16	12	56	37	22	57	12	89	102	113	28	37	70	38.1	15.9	1.4
UCTX05-13	13/16	5/8	15/32	2-7/32	1-15/32	55/64	2-1/4	0.472	3-1/2	4-1/64	4-29/64	1-3/32	1-29/64	2-3/4	1.5000	0.626	1.4	
UCTX05-14	7/8	5/8	15/32	2-7/32	1-15/32	55/64	2-1/4	0.472	3-1/2	4-1/64	4-29/64	1-3/32	1-29/64	2-3/4	1.5000	0.626	1.4	
UCTX05-15	15/16	5/8	15/32	2-7/32	1-15/32	55/64	2-1/4	0.472	3-1/2	4-1/64	4-29/64	1-3/32	1-29/64	2-3/4	1.5000	0.626	1.4	
UCTX05-16	1	5/8	15/32	2-7/32	1-15/32	55/64	2-1/4	0.472	3-1/2	4-1/64	4-29/64	1-3/32	1-29/64	2-3/4	1.5000	0.626	1.4	
UCTX06	30		16	15	64	37	22	64	12	89	102	129	30	37	78	42.9	17.5	1.8
UCTX06-17	1-1/16	5/8	19/32	2-33/64	1-1/29/64	55/64	2-33/64	0.472	3-1/2	4-1/64	5-5/64	1-3/16	1-29/64	3-5/64	1.6890	0.689	1.8	
UCTX06-18	1-1/8	5/8	19/32	2-33/64	1-1/29/64	55/64	2-33/64	0.472	3-1/2	4-1/64	5-5/64	1-3/16	1-29/64	3-5/64	1.6890	0.689	1.8	
UCTX06-19	1-3/16	5/8	19/32	2-33/64	1-1/29/64	55/64	2-33/64	0.472	3-1/2	4-1/64	5-5/64	1-3/16	1-29/64	3-5/64	1.6890	0.689	1.8	
UCTX06-20	1-1/4	5/8	19/32	2-33/64	1-1/29/64	55/64	2-33/64	0.472	3-1/2	4-1/64	5-5/64	1-3/16	1-29/64	3-5/64	1.6890	0.689	1.8	
UCTX07	35		19	17	83	49	29	83	16	102	114	144	36	49	88	49.2	19	2.6
UCTX07-21	1-5/16	3/4	21/32	3-17/64	1-15/16	9/64	17/64	0.630	4-1/64	4-31/64	5-6443/64	1-13/32	1-15/16	3-15/32	1.9370	0.748	2.6	
UCTX07-22	1-3/8	3/4	21/32	3-17/64	1-15/16	9/64	17/64	0.630	4-1/64	4-31/64	5-6443/64	1-13/32	1-15/16	3-15/32	1.9370	0.748	2.6	
UCTX07-23	1-7/16	3/4	21/32	3-17/64	1-15/16	9/64	17/64	0.630	4-1/64	4-31/64	5-6443/64	1-13/32	1-15/16	3-15/32	1.9370	0.748	2.6	



MONDIALTECH

Forniture Industriali

Via Raimondo Dalla Costa 240/b
41100 MODENA - ITALY
Tel. +39 059 256098 Fax. +39 059 246083
Codice R.E.A. 354046
Partita IVA E. Codice Fiscale: 03961810366
e-Mail: monditecinfo@mondialtech.net
Web: <http://www.mondialtech.net>



Vasto assortimento di Cuscinetti SKF - FAG

Tipo No.	Albero Diam.		Dimensioni (mm)														Peso (kg)	
	d (mm)	d (in)	o	g	p	q	s	b	k	e	a	w	l	i	h	Bi		n
UCTX08	40		19	17	83	49	29	83	16	102	114	144	36	49	87	49.2	19	2.6
UCTX08-24	1-1/2	3/4	21/32	3-	1-	1-	3-	0.630	4-	4-	5-	1-	1-	3-	1.9370	0.748	2.6	
UCTX08-25	1-9/16	3/4	21/32	3-	1-	1-	3-	0.630	4-	4-	5-	1-	1-	3-	1.9370	0.748	2.6	
UCTX09	45		19	18	83	49	29	86	16	102	117	151	38	49	92	51.6	19	2.8
UCTX09-26	1-5/8	3/4	23/32	3-	1-	1-	3-	0.630	4-	4-	5-	1-1/2	1-	3-5/8	2.0315	0.748	2.8	
UCTX09-27	1-11/16	3/4	23/32	3-	1-	1-	3-	0.630	4-	4-	5-	1-1/2	1-	3-5/8	2.0315	0.748	2.8	
UCTX09-28	1-3/4	3/4	23/32	3-	1-	1-	3-	0.630	4-	4-	5-	1-1/2	1-	3-5/8	2.0315	0.748	2.8	
UCTX09-29	1-13/16	3/4	23/32	3-	1-	1-	3-	0.630	4-	4-	5-	1-1/2	1-	3-5/8	2.0315	0.748	2.8	
UCTX10	50		25	21	102	64	35	95	22	130	146	171	42	64	106	55.6	22.2	4.3
UCTX10-30	1-7/8	63/64	13/16	4-	2-	1-3/8	3-3/4	0.866	5-1/8	5-3/4	6-	1-	2-	4-	2.1890	0.874	4.3	
UCTX10-31	1-15/16	63/64	13/16	4-	2-	1-3/8	3-3/4	0.866	5-1/8	5-3/4	6-	1-	2-	4-	2.1890	0.874	4.3	
UCTX10-32	2	63/64	13/16	4-	2-	1-3/8	3-3/4	0.866	5-1/8	5-3/4	6-	1-	2-	4-	2.1890	0.874	4.3	
UCTX11	55		32	21	102	64	35	102	22	130	146	194	44	64	119	65.1	25.4	5.2
UCTX11-33	2-1/16	1-17/64	13/16	4-	2-	1-3/8	4-	0.866	5-1/8	5-3/4	7-	1-	2-	4-	2.5630	1.000	5.2	
UCTX11-34	2-1/8	1-17/64	13/16	4-	2-	1-3/8	4-	0.866	5-1/8	5-3/4	7-	1-	2-	4-	2.5630	1.000	5.2	
UCTX11-35	2-3/16	1-17/64	13/16	4-	2-	1-3/8	4-	0.866	5-1/8	5-3/4	7-	1-	2-	4-	2.5630	1.000	5.2	
UCTX11-36	2-1/4	1-17/64	13/16	4-	2-	1-3/8	4-	0.866	5-1/8	5-3/4	7-	1-	2-	4-	2.5630	1.000	5.2	
UCTX11-37	2-5/16	1-17/64	13/16	4-	2-	1-3/8	4-	0.866	5-1/8	5-3/4	7-	1-	2-	4-	2.5630	1.000	5.2	
UCTX12	60		32	23	111	70	41	121	26	151	167	224	48	70	137	65.1	25.4	7.6
UCTX12-38	2-3/8	1-17/64	29/32	4-3/8	2-3/4	1-	4-	1.024	5-	6-	8-	1-	2-3/4	5-	2.5630	1.000	7.6	
UCTX12-39	2-7/16	1-17/64	29/32	4-3/8	2-3/4	1-	4-	1.024	5-	6-	8-	1-	2-3/4	5-	2.5630	1.000	7.6	
UCTX13	65		32	23	111	70	41	121	26	151	167	224	48	70	137	74.6	30.2	7.6
UCTX13-40	2-1/2	1-17/64	29/32	4-3/8	2-3/4	1-	4-	1.024	5-	6-	8-	1-	2-3/4	5-	2.9730	1.189	7.6	
UCTX13-41	2-9/16	1-17/64	29/32	4-3/8	2-3/4	1-	4-	1.024	5-	6-	8-	1-	2-3/4	5-	2.9730	1.189	7.6	
UCTX14	70		32	23	111	70	41	121	26	151	167	232	48	70	140	77.8	33.3	7.7
UCTX14-42	2-5/8	1-17/64	29/32	4-3/8	2-3/4	1-	4-	1.024	5-	6-	9-	1-	2-3/4	5-	3.0630	1.311	7.7	
UCTX14-43	2-11/16	1-17/64	29/32	4-3/8	2-3/4	1-	4-	1.024	5-	6-	9-	1-	2-3/4	5-	3.0630	1.311	7.7	
UCTX14-44	2-3/4	1-17/64	29/32	4-3/8	2-3/4	1-	4-	1.024	5-	6-	9-	1-	2-3/4	5-	3.0630	1.311	7.7	



MONDIALTECH

Forniture Industriali

Via Raimondo Dalla Costa 240/b
 41100 MODENA - ITALY
 Tel. +39 059 250090 Fax: +39 059 260083
 Codice R.E.A. 354046
 Partita IVA E. Codice Fiscale: 03061810366
 e-Mail: monditecinfo@mondialtech.net
 Web: <http://www.mondialtech.net>



Vasto assortimento di Cuscinetti SKF - FAG

Tipo No.	Albero Diam.		Dimensioni (mm)															Peso (kg)
	d (mm)	d (in)	o	g	p	q	s	b	k	e	a	w	l	i	h	Bi	n	
UCTX15	75		32	23	111	70	41	121	28	165	184	235	48	70	140	82.6	33.3	7.55
UCTX15-45	2-13/16	1-17/64	29/32	4-3/8	2-3/4	1-39/64	4-49/64	1.102	6-1/2	7-1/4	9-1/4	1-57/64	2-3/4	5-33/64	3.2520	1.311	7.55	
UCTX15-46	2-7/8	1-17/64	29/32	4-3/8	2-3/4	1-39/64	4-49/64	1.102	6-1/2	7-1/4	9-1/4	1-57/64	2-3/4	5-33/64	3.2520	1.311	7.55	
UCTX15-47	2-15/16	1-17/64	29/32	4-3/8	2-3/4	1-39/64	4-49/64	1.102	6-1/2	7-1/4	9-1/4	1-57/64	2-3/4	5-33/64	3.2520	1.311	7.55	
UCTX15-48	3	1-17/64	29/32	4-3/8	2-3/4	1-39/64	4-49/64	1.102	6-1/2	7-1/4	9-1/4	1-57/64	2-3/4	5-33/64	3.2520	1.311	7.55	
UCTX16	80		38	30	124	73	48	157	28	173	198	260	54	73	162	85.7	34.1	11
UCTX16-49	3-1/16	1-1/2	1-3/16	4-7/8	2-7/8	1-57/64	6-3/16	1.102	6-13/16	7-1/4	10-1/4	2-1/8	2-7/8	6-3/8	3.3740	1.343	11	
UCTX16-50	3-1/8	1-1/2	1-3/16	4-7/8	2-7/8	1-57/64	6-3/16	1.102	6-13/16	7-1/4	10-1/4	2-1/8	2-7/8	6-3/8	3.3740	1.343	11	
UCTX16-51	3-3/16	1-1/2	1-3/16	4-7/8	2-7/8	1-57/64	6-3/16	1.102	6-13/16	7-1/4	10-1/4	2-1/8	2-7/8	6-3/8	3.3740	1.343	11	
UCTX16-52	3-1/4	1-1/2	1-3/16	4-7/8	2-7/8	1-57/64	6-3/16	1.102	6-13/16	7-1/4	10-1/4	2-1/8	2-7/8	6-3/8	3.3740	1.343	11	
UCTX17	85		38	30	124	73	48	157	28	173	198	260	54	73	162	96	39.7	12
UCTX17-53	3-5/16	1-1/2	1-3/16	4-7/8	2-7/8	1-57/64	6-3/16	1.102	6-13/16	7-1/4	10-1/4	2-1/8	2-7/8	6-3/8	3.7795	1.563	12	
UCTX17-55	3-7/16	1-1/2	1-3/16	4-7/8	2-7/8	1-57/64	6-3/16	1.102	6-13/16	7-1/4	10-1/4	2-1/8	2-7/8	6-3/8	3.7795	1.563	12	



MONDIALTECH

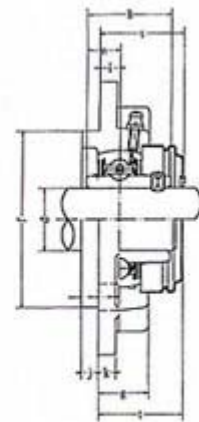
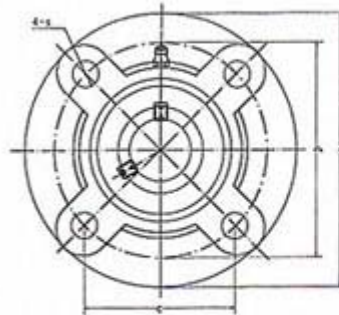
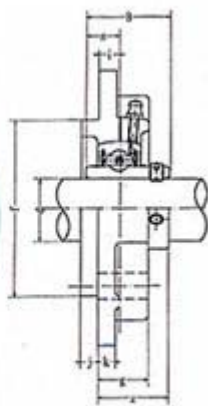
Forniture Industriali

Via Raimondo Dalla Costa 240/b
 41100 MODENA - ITALY
 Tel. +39 059 250090 Fax. +39 059 260083
 Codice R.E.A. 354046
 Partita IVA E. Codice Fiscale: 03061810366
 e-Mail: mondialtech@mondialtech.net
 Web: <http://www.mondialtech.net>

Vasto assortimento di Cuscinetti SKF - FAG



UCFCX



S(SM)-UCFC

Tipo No.	Albero Diam.	Dimensioni (mm)												Vite Tipo	Peso (kg)
		d (mm)	a	P	e	i	s	j	k	g	f	z	Bi		
UCFCX05	25	111	92	65	10	9.5	6	9.5	24	76	32.2	38.1	15.9	M8	1.2
UCFCX05-13	13/16	4-3/8	3-5/8	2-9/16	25/64	3/8	15/64	3/8	15/162.9921	1-9/32	1.5000	0.626	5/16	1.2	
UCFCX05-14	7/8	4-3/8	3-5/8	2-9/16	25/64	3/8	15/64	3/8	15/162.9921	1-9/32	1.5000	0.626	5/16	1.2	
UCFCX05-15	15/16	4-3/8	3-5/8	2-9/16	25/64	3/8	15/64	3/8	15/162.9921	1-9/32	1.5000	0.626	5/16	1.2	
UCFCX05-16	1	4-3/8	3-5/8	2-9/16	25/64	3/8	15/64	3/8	15/162.9921	1-9/32	1.5000	0.626	5/16	1.2	
UCFCX06	30	127	105	74.2	8	12	9.5	9.5	22.5	85	33.4	42.9	17.5	M10	1.5
UCFCX06-17	1-1/16	5	4-9/64	2-59/64	5/16	15/32	3/8	3/8	7/8	3.3465	1-5/16	1.6890	0.689	3/8	1.5
UCFCX06-18	1-1/8	5	4-9/64	2-59/64	5/16	15/32	3/8	3/8	7/8	3.3465	1-5/16	1.6890	0.689	3/8	1.5
UCFCX06-19	1-3/16	5	4-9/64	2-59/64	5/16	15/32	3/8	3/8	7/8	3.3465	1-5/16	1.6890	0.689	3/8	1.5
UCFCX06-20	1-1/4	5	4-9/64	2-59/64	5/16	15/32	3/8	3/8	7/8	3.3465	1-5/16	1.6890	0.689	3/8	1.5
UCFCX07	35	133	111	78.5	9	12	11	11	26	92	39.2	49.2	19	M10	1.9
UCFCX07-21	1-5/16	5-1/4	4-3/8	3-3/32	23/64	15/32	7/16	7/16	1-1/32	3.6220	1-17/32	1.9370	0.748	3/8	1.9



MONDIALTECH

Forniture Industriali

Via Raimondo Dalla Costa 240/b
41100 MODENA - ITALY
Tel. +39 059 250090 Fax. +39 059 240083
Codice R.E.A. 354046
Partita IVA E. Codice Fiscale: 03661810366
e-Mail: monditecinfo@mondialtech.net
Web: <http://www.mondialtech.net>

Vasto assortimento di Cuscinetti SKF - FAG



Tipo No.	Albero Diam. (mm)	Dimensioni (mm) (in)											Vite Tipo mm inch	Peso (kg)			
		d (in)	a	P	e	i	s	j	k	g	f	z			Bi	n	
UCFCX07-22	1-3/8	5-1/4	4-3/8	3-3/32	23/64	15/32	7/16	7/16	1-1/32	3.6220	1-17/32	1.9370	0.748	3/8	1.9		
UCFCX07-23	1-7/16	5-1/4	4-3/8	3-3/32	23/64	15/32	7/16	7/16	1-1/32	3.6220	1-17/32	1.9370	0.748	3/8	1.9		
UCFCX08	40		133	111	78.5	9	12	11	11	26	92	39.2	49.2	19	M10	2.0	
UCFCX08-24	1-1/2	5-1/4	4-3/8	3-3/32	23/64	15/32	7/16	7/16	1-1/32	3.6220	1-17/32	1.9370	0.748	3/8	2.0		
UCFCX08-25	1-9/16	5-1/4	4-3/8	3-3/32	23/64	15/32	7/16	7/16	1-1/32	3.6220	1-17/32	1.9370	0.748	3/8	2.0		
UCFCX09	45		155	130	91.9	8	14	12	11	25	108	40.6	51.6	19	M12	2.6	
UCFCX09-26	1-5/8	6-3/32	5-1/8	3-5/8	5/16	35/64	15/32	7/16	63/64	4.2520	1-19/32	2.0315	0.748	7/16	2.6		
UCFCX09-27	1-11/16	6-3/32	5-1/8	3-5/8	5/16	35/64	15/32	7/16	63/64	4.2520	1-19/32	2.0315	0.748	7/16	2.6		
UCFCX09-28	1-3/4	6-3/32	5-1/8	3-5/8	5/16	35/64	15/32	7/16	63/64	4.2520	1-19/32	2.0315	0.748	7/16	2.6		
UCFCX09-29	1-13/16	6-3/32	5-1/8	3-5/8	5/16	35/64	15/32	7/16	63/64	4.2520	1-19/32	2.0315	0.748	7/16	2.6		
UCFCX10	50		162	136	96.2	7	14	16	11	25	118	40.4	55.6	22.2	M12	3.2	
UCFCX10-30	1-7/8	6-3/8	5-23/64	3-25/32	9/32	35/64	5/8	7/16	63/64	4.6457	1-19/32	2.1890	0.874	7/16	3.2		
UCFCX10-31	1-15/16	6-3/8	5-23/64	3-25/32	9/32	35/64	5/8	7/16	63/64	4.6457	1-19/32	2.1890	0.874	7/16	3.2		
UCFCX10-32	2	6-3/8	5-23/64	3-25/32	9/32	35/64	5/8	7/16	63/64	4.6457	1-19/32	2.1890	0.874	7/16	3.2		
UCFCX11	55		180	152	1.705	4	16	22	13	26	127	43.7	65.1	25.4	M14	4.3	
UCFCX11-33	2-1/16	7-3/32	5-263/64	4-15/64	5/32	5/8	55/64	1/2	1-1/32	5.0000	1-23/32	2.5630	1.000	1/2	4.3		
UCFCX11-34	2-1/8	7-3/32	5-263/64	4-15/64	5/32	5/8	55/64	1/2	1-1/32	5.0000	1-23/32	2.5630	1.000	1/2	4.3		
UCFCX11-35	2-3/16	7-3/32	5-263/64	4-15/64	5/32	5/8	55/64	1/2	1-1/32	5.0000	1-23/32	2.5630	1.000	1/2	4.3		
UCFCX11-36	2-1/4	7-3/32	5-263/64	4-15/64	5/32	5/8	55/64	1/2	1-1/32	5.0000	1-23/32	2.5630	1.000	1/2	4.3		
UCFCX11-37	2-5/16	7-3/32	5-263/64	4-15/64	5/32	5/8	55/64	1/2	1-1/32	5.0000	1-23/32	2.5630	1.000	1/2	4.3		
UCFCX12	60		194	165	116.7	11	16	20	14	33	140	50.7	65.1	25.4	M14	5.3	
UCFCX12-38	2-3/8	7-5/8	6-1/2	4-19/32	7/16	5/8	25/32	9/16	1-5/16	5.5118	2	2.5630	1.000	1/2	5.3		
UCFCX12-39	2-7/16	7-5/8	6-1/2	4-19/32	7/16	5/8	25/32	9/16	1-5/16	5.5118	2	2.5630	1.000	1/2	5.3		
UCFCX13	65		194	165	116.7	11	16	20	14	33	140	55.4	74.6	30.2	M14	5.7	
UCFCX13-40	2-1/2	7-5/8	6-1/2	4-19/32	7/16	5/8	25/32	9/16	1-5/16	5.5118	2-3/16	2.9370	1.189	1/2	5.7		
UCFCX13-41	2-9/16	7-5/8	6-1/2	4-19/32	7/16	5/8	25/32	9/16	1-5/16	5.5118	2-3/16	2.9370	1.189	1/2	5.7		
UCFCX14	70		222	190	134	03	14	19	20	14	36	164	58.5	77.8	33.3	M16	7.3
UCFCX14-42	2-5/8	8-3/4	7-31/64	5-9/32	35/64	3/4	25/32	9/16	1-13/32	6.4567	2-5/16	3.0630	1.311	M16	7.3		
UCFCX14-43	2-1/16	8-	7-	5-	35/64	3/4	25/32	9/16	1-	6.4567	2-	3.0630	1.311	M16	7.3		



MONDIALTECH

Forniture Industriali

Via Raimondo Dalla Costa 240/b
41100 MODENA - ITALY
Tel. +39 059 250090 Fax. +39 059 240083
Codice R.E.A. 354046
Partita IVA E. Codice Fiscale: 03061310366
e-Mail: mondialtech@mondialtech.net
Web: <http://www.mondialtech.net>

Vasto assortimento di Cuscinetti SKF - FAG



Tipo No.	Albero Diam. d (mm) (in)	Dimensioni (mm) (in)											Vite Tipo mm inch	Peso (kg)	
		a	P	e	i	s	j	k	g	f	z	Bi			n
		3/4	31/64	9/32							13/32		5/16		
UCFCX14-44	2-3/4	8-3/4	7-31/64	5-9/32	35/64	3/4	25/32	9/16	1-13/32	6.4567	2-5/16	3.0630	1.311	M16	7.3
UCFCX15	75	222	190	134.3	12	19	22	16	35	164	61.3	82.6	33.3	M16	8
UCFCX15-45	2-13/16	8-3/4	7-31/64	5-9/32	15/32	3/4	55/64	5/8	1-3/8	6.4567	2-13/32	3.2520	1.311	5/8	8
UCFCX15-46	2-7/8	8-3/4	7-31/64	5-9/32	15/32	3/4	55/64	5/8	1-3/8	6.4567	2-13/32	3.2520	1.311	5/8	8
UCFCX15-47	2-15/16	8-3/4	7-31/64	5-9/32	15/32	3/4	55/64	5/8	1-3/8	6.4567	2-13/32	3.2520	1.311	5/8	8
UCFCX15-48	3	8-3/4	7-31/64	5-9/32	15/32	3/4	55/64	5/8	1-3/8	6.4567	2-13/32	3.2520	1.311	5/8	8
UCFCX16	80	260	219	154.8	10	23	25	19	36	186	61.6	85.7	34.1	M20	11.3
UCFCX16-49	3-1/16	10-1/4	8-5/8	6-3/32	25/64	29/32	63/64	3/4	1-13/32	7.3228	2-7/16	3.3740	1.343	5/8	11.3
UCFCX16-50	3-1/8	10-1/4	8-5/8	6-3/32	25/64	29/32	63/64	3/4	1-13/32	7.3228	2-7/16	3.3740	1.343	5/8	11.3
UCFCX16-51	3-3/16	10-1/4	8-5/8	6-3/32	25/64	29/32	63/64	3/4	1-13/32	7.3228	2-7/16	3.3740	1.343	5/8	11.3
UCFCX16-52	3-1/4	10-1/4	8-5/8	6-3/32	25/64	29/32	63/64	3/4	1-13/32	7.3228	2-7/16	3.3740	1.343	5/8	11.3
UCFCX17	85	260	219	154.8	10	23	25	19	36	186	66.3	96	39.7	M20	12.9
UCFCX17-53	3-5/16	10-1/4	8-5/8	6-3/32	25/64	29/32	63/64	3/4	1-13/32	7.3228	2-5/8	3.7795	1.563	3/4	12.9
UCFCX17-55	3-7/16	10-1/4	8-5/8	6-3/32	25/64	29/32	63/64	3/4	1-13/32	7.3228	2-5/8	3.7795	1.563	3/4	12.9



MONDIALTECH
Forniture Industriali

Via Raimondo Dalla Costa 240/b
41100 MODENA - ITALY
Tel. +39 059 256090 Fax. +39 059 260883
Codice R.E.A. 354046
Partita IVA E Codice Fiscale: 03661810366
e-Mail: mondialtech@mondialtech.net
Web: <http://www.mondialtech.net>

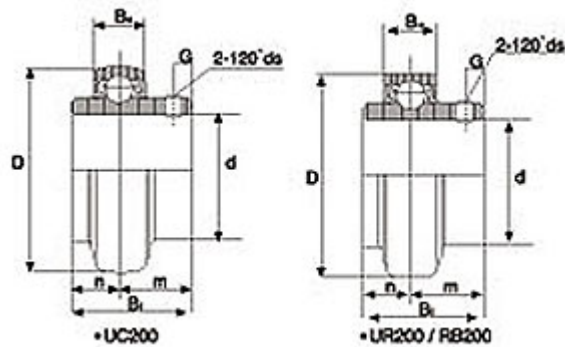
Vasto assortimento di Cuscinetti SKF - FAG

LK
Prepared to Order

CSC
Cuscinetti Standard

MONDIAL
Cuscinetti a Balli

UC serie 200



Tipo No.	Albero Diam.		Dimensioni (mm)							Basic dynamic Load ratings (KN)	Basic static Load ratings (KN)	Peso (kg)	
	d in	d mm	D	Bi	Be	n	m	G	Ds mm				Ds in.UNF
UCW201		12	40	27.4	14	11.5	15.9	4.5	M5x0.8		7.36	4.79	0.12
UCW201-8	1/2		40	27.4	14	11.5	15.9	4.5		1/4-28	7.36	4.79	0.12
UCW202		15	40	27.4	14	11.5	15.9	4.5	M5x0.8		7.36	4.79	0.11
UCW202-9	9/16		40	27.4	14	11.5	15.9	4.5		1/4-28	7.36	4.79	0.11
UCW202-10	5/8		40	27.4	14	11.5	15.9	4.5		1/4-28	7.36	4.79	0.11
UCW203		17	40	27.4	14	11.5	15.9	4.5	M5x0.8		7.36	4.79	0.10
UCW203-11	11/16		40	27.4	14	11.5	15.9	4.5		1/4-28	7.36	4.79	0.10
UC201		12	47	31	17	12.7	18.3	5	M6x1		9.88	6.65	0.21
UC201-8	1/2		47	31	17	12.7	18.3	5		1/4-28	9.88	6.65	0.21
UC202		15	47	31	17	12.7	18.3	5	M6x1		9.88	6.65	0.19
UC202-9	9/16		47	31	17	12.7	18.3	5		1/4-28	9.88	6.65	0.19
UC202-10	5/8		47	31	17	12.7	18.3	5		1/4-28	9.88	6.65	0.19
UC203		17	47	31	17	12.7	18.3	5	M6x1		9.88	6.65	0.19
UC203-11	11/16		47	31	17	12.7	18.3	5		1/4-28	9.88	6.65	0.19
UC204		20	47	31	17	12.7	18.3	5	M6x1	1/4-28	9.88	6.65	0.17
UC204-12	3/4		47	31	17	12.7	18.3	5	M6x1	1/4-28	9.88	6.65	0.18
UC205		25	52	34.1	17	14.3	19.8	5	M6x1	1/4-28	7.36	4.79	0.19
UC205-14	7/8		52	34.1	17	14.3	19.8	5	M6x1	1/4-28	10.78	9.93	0.22
UC205-15	15/16		52	34.1	17	14.3	19.8	5	M6x1	1/4-28			0.20
UC205-16	1		52	34.1	17	14.3	19.8	5	M6x1	1/4-28			0.19
UC206		30	62	38.1	19	15.9	22.2	5	M6x1	1/4-28	14.97	11.31	0.31
UC206-17	1-11/16		62	38.1	19	15.9	22.2	5	M6x1	1/4-28	14.97	11.31	
UC206-18	1-1/8		62	38.1	19	15.9	22.2	5	M6x1	1/4-28	14.97	11.31	0.34
UC206-19	1-3/16		62	38.1	19	15.9	22.2	5	M6x1	1/4-28	14.97	11.31	0.32
UC206-20	1-1/4		62	38.1	19	15.9	22.2	5	M6x1	1/4-28	14.97	11.31	0.30
UC207		35	72	42.9	20	17.5	25.4	7	M8x1	5/16-24	19.75	15.30	0.46
UC207-20	1-1/4		72	42.9	20	17.5	25.4	7	M8x1	5/16-24	19.75	15.30	0.52
UC207-21	15/16		72	42.9	20	17.5	25.4	7	M8x1	5/16-24	19.75	15.30	
UC207-22	1-3/8		72	42.9	20	17.5	25.4	7	M8x1	5/16-24	19.75	15.30	0.48



MONDIALTECH

Forniture Industriali

Via Raimondo Dalla Costa 240/b
 41100 MODENA - ITALY
 Tel. +39 059 250090 Fax. +39 059 240083
 Codice R.E.A. 354046
 Partita IVA E Codice Fiscale: 03061310366
 e-Mail: monditecinfo@mondialtech.net
 Web: <http://www.mondialtech.net>



Vasto assortimento di Cuscinetti SKF - FAG

Tipo No.	Albero Diam.		Dimensioni (mm)							Ds		Basic dynamic Load ratings (KN)	Basic static Load ratings (KN)	Peso (kg)
	d in	mm	D	Bi	Be	n	m	G	mm	in.UNF				
UC207-23	1-7/16		72	42.9	20	17.5	25.4	7	M8x1	5/16-24	19.75	15.30	0.46	
UC208		40	80	49.2	21	19.0	30.2	8	M8x1	5/16-24	25.09	19.84	0.63	
UC208-24	1-1/2		80	49.2	21	19.0	30.2	8	M8x1	5/16-24	25.09	19.84	0.68	
UC208-25	1-9/16		80	49.2	21	19.0	30.2	8	M8x1	5/16-24	25.09	19.84	0.64	
UC209		45	85	49.2	22	19.0	30.2	8	M8x1	5/16-24	25.14	20.46	0.68	
UC209-26	1-5/8		85	49.2	22	19.0	30.2	8	M8x1	5/16-24	25.14	20.46	0.78	
UC209-27	1-11/16		85	49.2	22	19.0	30.2	8	M8x1	5/16-24	25.14	20.46	0.74	
UC209-28	1-3/4		85	49.2	22	19.0	30.2	8	M8x1	5/16-24	25.14	20.46	0.70	
UC210		50	90	51.6	24	19.0	32.6	10	M10x1.25	3/8-24	26.98	23.18	0.78	
UC210-30	1-7/8		90	51.6	24	19.0	32.6	10	M10x1.25	3/8-24	26.98	23.18	0.85	
UC210-31	1-15/16		90	51.6	24	19.0	32.6	10	M10x1.25	3/8-24	26.98	23.18	0.80	
UC211		55	100	55.6	25	22.2	33.4	10	M10x1.25	3/8-24	33.37	29.22	1.07	
UC211-32	2		100	55.6	25	22.2	33.4	10	M10x1.25	3/8-24	33.37	29.22	1.22	
UC211-34	2-1/8		100	55.6	25	22.2	33.4	10	M10x1.25	3/8-24	33.37	29.22	1.10	
UC211-35	2-3/16		100	55.6	25	22.2	33.4	10	M10x1.25	3/8-24	33.37	29.22	1.05	
UC212		60	110	65.1	27	25.4	39.7	10	M10x1.25	3/8-24	36.74	32.93	1.51	
UC212-36	2-1/4		110	65.1	27	25.4	39.7	10	M10x1.25	3/8-24	36.74	32.93	1.65	
UC212-38	2-3/8		110	65.1	27	25.4	39.7	10	M10x1.25	3/8-24	36.74	32.93		
UC212-39	2-7/16		110	65.1	27	25.4	39.7	10	M10x1.25	3/8-24	36.74	32.93	1.42	
UC213		65	120	65.1	29	25.4	39.7	10	M10x1.25	3/8-24	44.01	40	1.86	
UC213-39	2-7/16		120	65.1	29	25.4	39.7	10	M10x1.25	3/8-24	44.01	40	1.96	
UC213-40	2-1/2		120	65.1	29	25.4	39.7	10	M10x1.25	3/8-24	44.01	40	1.94	
UC214		70	125	74.6	30	30.2	44.4	12	M12x1.25	7/16-20	46.79	45.03	2.05	
UC214-43	2-11/16		125	74.6	30	30.2	44.4	12	M12x1.25	7/16-20	46.79	45.03	2.04	
UC214-44	2-3/4		125	74.6	30	30.2	44.4	12	M12x1.25	7/16-20	46.79	45.03	2.06	
UC215		75	130	77.6	30	33.3	44.5	12	M12x1.25	7/16-20	50.85	49.30	2.21	
UC215-47	2-15/16		130	77.6	30	33.3	44.5	12	M12x1.25	7/16-20	50.85	49.30	2.30	
UC215-48	3		130	77.6	30	33.3	44.5	12	M12x1.25	7/16-20	50.85	49.30	2.13	
UC216		80	140	82.6	33	33.3	49.3	12	M12x1.25	7/16-20	55.04	53.31	2.79	
UC217		85	150	85.7	35	34.1	51.6	12	M12x1.5	7/16-20	63.98	63.89	3.38	
UC217-52	3-1/4		150	85.7	35	34.1	51.6	12	M12x1.5	7/16-20	63.98	63.89	3.59	
UC218		90	160	96	37	39.7	56.3	12	M12x1.5	1/2-20	73.83	70.76	4.46	
UC218-56	3-1/2		160	96	37	39.7	56.3	12	M12x1.5	1/2-20	73.83	70.76	4.56	



MONDIALTECH
Forniture Industriali

Via Raimondo Dalla Costa 240/b
41100 MODENA - ITALY
Tel. +39 059 250090 Fax. +39 059 260083
Codice R.E.A. 354046
Partita IVA E. Codice Fiscale: 03661810366
e-Mail: mondialtech@mondialtech.net
Web: <http://www.mondialtech.net>

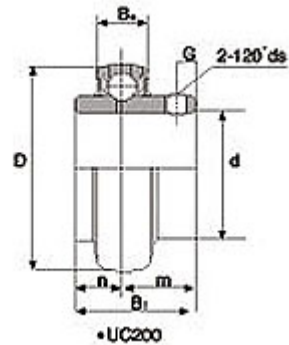
Vasto assortimento di Cuscinetti SKF - FAG

LK
Prepared to Order

CSC
Customer Specialist

MONDIAL
Cuscinetti a Rulli

UC serie 300



Tipo No.	Albero diam. (mm)	Dimensioni (mm)							Basic Load Rating kg		Peso (kg)
		D	Bi	Be	n	m	G	ds	Dynamic C	Static C0	
UC305	25	62	38	21	15	23	6	M6X0.75	2170	1090	0.44
UC306	30	72	43	23	17	26	6	M6X0.75	2730	1420	0.56
UC307	35	80	48	25	19	29	8	M8X1	3400	1820	0.71
UC308	40	90	52	27	19	33	10	M10X1.25	4150	2270	1.00
UC309	45	100	57	30	22	35	10	M10X1.25	5250	3050	1.28
UC310	50	110	61	32	22	39	12	M12X1.5	6300	3650	1.65
UC311	55	120	66	34	25	41	12	M12X1.5	7300	4250	2.07
UC312	60	130	71	36	26	45	12	M12X1.5	8300	4900	2.59
UC313	65	140	75	38	30	45	12	M12X1.5	9450	5650	3.15
UC314	70	150	78	40	33	45	12	M12X1.5	10600	6450	3.83
UC315	75	160	82	42	32	50	14	M14X1.5	11600	7200	4.59
UC316	80	170	86	44	34	52	14	M14X1.5	12500	8150	5.40
UC317	85	180	96	46	40	56	16	M16X1.5	13500	9100	6.58
UC318	90	190	96	48	40	56	16	M16X1.5	14600	10100	7.34
UC319	95	200	103	50	41	62	16	M16X1.5	15600	11100	8.70
UC320	100	215	108	54	42	66	18	M18X1.5	17700	13300	10.80
UC321	105	225	112	56	44	68	18	M18X1.5	18700	14500	12.20
UC322	110	240	117	60	46	71	18	M18X1.5	20900	17000	14.30
UC324	120	260	126	64	51	75	18	M18X1.5	21100	17000	18.50
UC326	130	280	135	68	54	81	20	M20X1.5	23400	19600	23.00
UC328	140	300	145	73	59	86	20	M20X1.5	26000	22400	28.50



MONDIALTECH
Forniture Industriali

Via Raimondo Dalla Costa 240/b
41100 MODENA - ITALY
Tel. +39 059 256090 Fax: +39 059 260883
Codice R.E.A. 354046
Partita IVA E. Codice Fiscale: 03661810366
e-Mail: monditecinfo@mondialtech.net
Web: <http://www.mondialtech.net>

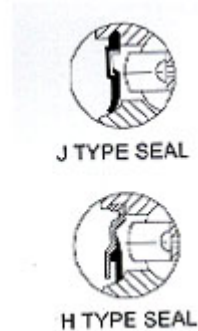
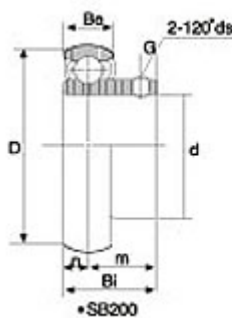
Vasto assortimento di Cuscinetti SKF - FAG

LK
Prepared to Order

CSC
Crucial Seal Technology

MONDIAL
Cuscinetti a Rulli

SB serie 200



Tipo No.	Albero Diam.	Dimensioni (mm)								Basic dynamic Load ratings	Basic static Load ratings (KN)	Peso (kg)
		d (in) (mm)	D	Bi	Be	n	m	G	ds (in.UNF)			
SB201		12	40	22	12	6.0	16.0	4.5	M5*0.8	7.36	4.79	0.09
SB201-8	1/2		40	22	12	6.0	16.0	4.5	1/4-28	7.36	4.79	0.09
SB202		15	40	22	12	6.0	16.0	4.5	M5*0.8	7.36	4.79	0.09
SB202-9	9/16		40	22	12	6.0	16.0	4.5	1/4-28	7.36	4.79	0.09
SB202-10	5/8		40	22	12	6.0	16.0	4.5	1/4-28	7.36	4.79	0.09
SB203		17	40	22	12	6.0	16.0	4.5	M5X0.8	7.36	4.79	0.07
SB204		20	47	24.7	14	7.0	18.0	5.0	M6*1	9.88	6.65	0.12
SB204-12	3/4		47	24.7	14	7.0	18.0	5.0	1/4-28	9.88	6.65	0.13
SB205		25	52	27.7	15	7.5	19.5	5.5	M6*1	10.78	9.93	0.16
SB205-15	15/16		52	27.7	15	7.5	19.5	5.0	1/4-28	10.78	9.93	0.17
SB205-16	1		52	27.7	15	7.5	19.5	5.0	1/4-28	10.78	9.93	0.16
SB205-14	7/8		52	27.7	15	7.5	19.5	5.0	1/4-28	10.78	9.93	0.18
SB206		30	62	30.3	16	8.0	22.0	6.0	M6*1	14.97	11.31	0.25
SB206-18	1-1/8		62	30.3	16	8.0	22.0	6.0	1/4-28	14.97	11.31	0.26
SB206-19	1- 3/16		62	30.3	16	8.0	22.0	6.0	1/4-28	14.97	11.31	0.25
SB206-20	1-1/4		62	30.3	16	8.0	22.0	6.0	1/4-28	14.97	11.31	0.24
SB207		35	72	32	17	8.5	23.5	7.0	M6*1	19.75	15.30	0.38
SB207-20	1-1/4		72	32	17	8.5	23.5	7.0	1/4-28	19.75	15.30	0.43



MONDIALTECH
Forniture Industriali

Via Raimondo Dalla Costa 240/b
41100 MODENA - ITALY
Tel. +39 059 250090 Fax: +39 059 260083
Codice R.E.A. 354046
Partita IVA E Codice Fiscale: 03061810366
e-Mail: monditecinfo@mondialtech.net
Web: <http://www.mondialtech.net>

Vasto assortimento di Cuscinetti SKF - FAG

LK
Pagamenti di Qualità

CSC
Cuscinetti Standard

MONDIAL
Cuscinetti a Balli

Tipo No.	Albero Diam.	Dimensioni (mm)								Basic dynamic Load ratings	Basic static Load ratings (KN)	Peso (kg)
		d (in) (mm)	D	Bi	Be	n	m	G	ds (mm) (in.UNF)			
SB207-22	1-1/8	72	32	17	8.5	23.5	7.0		1/4-28	19.75	15.30	0.38
SB207-23	1- 9/16	72	32	17	8.5	23.5	7.0		1/4-28	19.75	15.30	0.37
SB208	40	80	34	19	9.0	25.0	8.0	M8*1		25.09	19.84	0.58
SB208-24	1-1/2	80	34	19	9.0	25.0	8.0		5/16-24	25.09	19.84	0.60
SB208-25	1- 9/16	80	34	19	9.0	25.0	8.0		5/16-24	25.09	19.84	0.58
SB209	45	85	41.2	19	10.2	31	8.2	M8*1		33	21	0.80
SB210	50	90	43.5	20	10.9	32.6	9.2	M10*1		35	23	0.83



MONDIALTECH
Forniture Industriali

Via Raimondo Dalla Costa 240/b
41100 MODENA - ITALY
Tel. +39 059 250090 Fax: +39 059 260083
Codice R.E.A. 354046
Partita IVA E. Codice Fiscale: 03061810366
e-Mail: mondialtech@mondialtech.net
Web: <http://www.mondialtech.net>

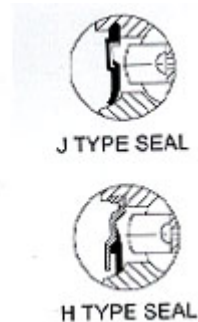
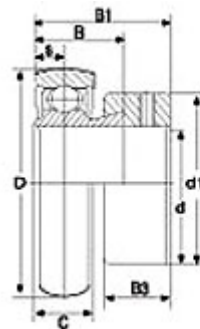
Vasto assortimento di Cuscinetti SKF - FAG

LK
Prepared to Order

CSC
Cuscinetti Standard

MONDIAL
Cuscinetti a Balli

SA serie 200



Tipo No.	Albero Diam d (in) (mm)	Dimensioni (mm)							Collare Eccentrico	Basic dynamic Load ratings	Basic static Load ratings (KN)	Peso (kg)
		D	B	B1	S	C	B3	d1				
SA203	17	40	20	28.6	5	12	13.5	28.6	A203	7.35	4.78	0.13
SA203-11	11/16	40	20	28.6	5	12	13.5	28.6	A203-11	7.35	4.78	0.13
SA204-12	3/4	47	21.5	31	7	14	13.5	33.3	A204-12	9.88	6.65	0.15
SA204	20	47	21.5	31	7	14	13.5	33.3	A204	9.88	6.65	0.15
SA205-14	7/8	52	21.5	31.5	7.5	15	13.5	38.1	A205-14	10.78	7.88	0.22
SA205-15	15/16	52	21.5	31.5	7.5	15	13.5	38.1	A205-15	10.78	7.88	0.22
SA205	25	52	21.5	31.5	7.5	15	13.5	38.1	A205	10.78	7.88	0.22
SA205-16	1	52	21	30.5	7.5	15	13.5	38.1	A205-16	10.78	7.88	0.22
SA206-18	1-1/8	62	23.8	35.7	8	16	15.9	44.5	A206-18	14.97	11.2	0.30
SA206	30	62	23.8	35.7	8	16	15.9	44.5	A206	14.97	11.2	0.30
SA206-19	1-3/16	62	23.8	35.7	8	16	15.9	44.5	A206-19	14.97	11.2	0.30
SA206-20	1-1/4	62	23.8	35.7	8	16	15.9	44.5	A206-20	14.97	11.2	0.30
SA207-20	1-1/4	72	25.4	38.9	9	17	17.5	55.6	A207-20	19.75	15.2	0.50
SA207-21	1-6/16	72	25.4	38.9	9	17	17.5	55.6	A207-21	19.75	15.2	0.50
SA207-22	1-3/8	72	25.4	38.9	9	17	17.5	55.6	A207-22	19.75	15.2	0.50
SA207	35	72	25.4	38.9	9	17	17.5	55.6	A207	19.75	15.2	0.50
SA207-23	1-7/16	72	25.4	38.9	9	17	17.5	55.6	A207-23	19.75	15.2	0.50
SA208-24	1-1/2	80	30.2	43.7	9.5	18	18.3	60.3	A208-24	22.8	18.2	0.67
SA208-25	1-9/16	80	30.2	43.7	9.5	18	18.3	60.3	A208-25	22.8	18.2	0.67
SA208	40	80	30.2	43.7	9.5	18	18.3	60.3	A208	22.8	18.2	0.67
SA209	45	85	30.2	43.7	10	19	18.3	63.5	A209	31	20.8	0.72
SA210	50	90	30.2	43.7	10.5	20	18.3	69.9	A210	35.10	23.2	0.86



MONDIALTECH
Forniture Industriali

Via Raimondo Dalla Costa 240/b
41100 MODENA - ITALY
Tel. +39 059 256090 Fax. +39 059 260883
Codice R.E.A. 354046
Partita IVA E. Codice Fiscale: 03661810366
e-Mail: mondialtech@mondialtech.net
Web: <http://www.mondialtech.net>

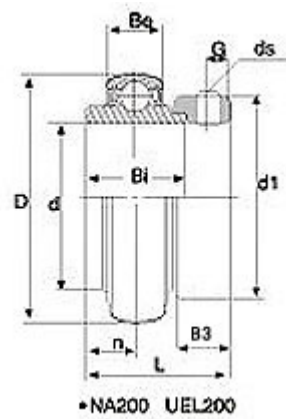
Vasto assortimento di Cuscinetti SKF - FAG

LK
Prestige & Quality

CSC
Cuscinetti Standard

MONDIAL
Cuscinetti a Balli

NA serie 200



Tipo No.	Albero Diam		Dimensioni (mm)							ds (mm) in	Basic dynamic Load ratings (KN)	Basic static Load ratings (KN)	Pso (kg)
	d (mm)	D	Be	L	Bi	n	dl	B3	G				
NA204	20	47	17	43.6	34.2	13.5	33.3	13.5	5	M6*1	9.88	6.65	0.21
NA205	25	52	17	44.4	34.9	13.5	38.1	13.5	5	M6*1	10.78	9.93	0.25
NA206	30	62	19	48.4	36.5	15.9	44.5	15.9	5	M6*1	14.97	11.31	0.39
NA207	35	72	20	51.2	37.6	17.5	55.6	17.5	6.5	M8*1	19.75	15.30	0.60
NA208	40	80	21	56.4	42.8	18.3	60.3	18.3	6.5	M8*1	25.09	19.84	0.77
NA209	45	85	22	56.4	42.8	18.3	63.5	18.3	6.50	M8*1	25.14	20.46	0.84
NA210	50	90	24	62.7	49.2	18.3	69.9	18.3	6.50	M8*1	26.98	23.18	1.02
NA211	55	100	25	71.4	55.6	20.7	76.2	20.7	8.00	M10*1.25	33.37	29.22	1.37
NA212	60	110	27	77.8	61.2	22.3	84.1	22.3	8.00	M10*1.25	36.74	32.93	1.85



MONDIALTECH
Forniture Industriali

Via Raimondo Dalla Costa 240/b
41100 MODENA - ITALY
Tel. +39 059 256090 Fax: +39 059 260883
Codice R.E.A. 354046
Partita IVA E. Codice Fiscale: 03661810366
e-Mail: mondialtech@mondialtech.net
Web: <http://www.mondialtech.net>

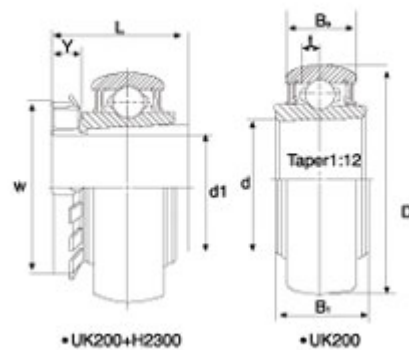
Vasto assortimento di Cuscinetti SKF - FAG

LK
Prepared to Order

CSC
Cuscinetti Standard

MONDIAL
Cuscinetti a Balli

UK serie 200



Tipo No.	Albero Diam.		Dimensioni (mm)								Basic dynamic Load ratings (KN)	Basic static Load ratings (KN)	Cuscini. No.	Bussola No.	Peso (kg)
	D1 (in)	D1 (mm)	d	D	Be	Bi	L	t	r	w					
UK205+H2305	3/4	20	25	52	17	23	35	4.5	8	38	10.78	9.93	UK205	H2305	0.24
UK205+HE2305	3/4		25	52	17	23	35	4.5	8	38	10.78	9.93	UK205	HE2305	0.25
UK206+H2306		25	30	62	19	26	38	5.1	8	45	14.97	11.31	UK206	H2306	0.4
UK206+HA2306	15/16		30	62	19	26	38	5.1	8	45	14.97	11.31	UK206	HA2306	0.41
UK206+HA2306	1		30	62	19	26	38	5.1	8	45	14.97	11.31	UK206	HE2306	0.37
UK207+H2307		30	35	72	20	28	43	5.8	9	52	19.75	15.30	UK207	H2307	0.55
UK207+HS230	1-1/8		35	72	20	28	43	5.8	9	52	19.75	15.30	UK207	HA2307	0.57
UK207+HA2307	1-3/16		35	72	20	28	43	5.8	9	52	19.75	15.30	UK207	HE2307	0.55
UK208+H2308		35	40	80	21	29	46	6.2	10	58	25.09	19.84	UK208	H2308	0.72
UK208+HE2308	1-1/14		40	80	21	29	46	6.2	10	58	25.09	19.84	UK208	HE2308	0.78
UK209+H2309		40	45	85	22	30	50	6.5	11	65	25.14	20.46	UK209	H2309	0.93
UK209+HA2309	1-7/16		45	85	22	30	50	6.5	11	65	25.14	20.46	UK209	HA2309	0.89
UK209+HE2309	1-1/2		45	85	22	30	50	6.5	11	65	25.14	20.46	UK209	HE2309	0.95
UK210+H2310		45	50	90	22	32	55	6.5	12	70	26.98	23.18	UK210	H2310	0.80
UK210+HA2310	1-11/16		50	90	22	32	55	6.5	12	70	26.98	23.18	UK210	HA2310	0.89
UK210+HE2310	1-3/4		50	90	22	32	55	6.5	12	70	26.98	23.18	UK210	HE2310	0.84
UK211+H2311		50	55	100	25	36	59	7.3	12	75	33.37	29.22	UK211	H2311	1.19



MONDIALTECH

Forniture Industriali

Via Raimondo Dalla Costa 240/b
 41100 MODENA - ITALY
 Tel. +39 059 250090 Fax: +39 059 260083
 Codice R.E.A. 354046
 Partita IVA E Codice Fiscale: 03061810366
 e-Mail: mondialtech@mondialtech.net
 Web: <http://www.mondialtech.net>

Vasto assortimento di Cuscinetti SKF - FAG



Tipo No.	Albero Diam.		Dimensioni (mm)								Basic dynamic Load ratings (KN)	Basic static Load ratings (KN)	Cuscini. No.	Bussola No.	Peso (kg)
	D1 (in)	D1 (mm)	d	D	Be	Bi	L	t	r	w					
UK211+HA2311	1-7/8		55	100	25	36	59	7.3	12	75	33.37	29.22	UK211	HA2311	1.28
UK211+HE2311	2		55	100	25	36	59	7.3	12	75	33.37	29.22	UK211	HE2311	1.17
UK212+H2312		55	60	110	27	38	62	7.7	13	80	36.74	32.93	UK212	H2312	1.52
UK212+HS2312	2-1/8		60	110	27	38	62	7.7	13	80	36.74	32.93	UK212	HA2312	1.56
UK213+H2313		60	65	120	29	40	65	8.3	14	85	44.01	40.0	UK213	H2313	1.91
UK213+HA2313	2-3/16		65	120	29	40	65	8.3	14	85	44.01	40.0	UK213	HA2313	2.10
UK213+HE2313	2-1/4		65	120	29	40	65	8.3	14	85	44.01	40.0	UK213	HE2313	2.04
UK215+H2315		65	75	130	30	43	73	9.2	15	98	50.85	49.30	UK215	H2315	2.56
UK215+HE2315	2-1/2		75	130	30	43	73	9.2	15	98	50.85	49.30	UK215	HE2315	2.65
UK216+H2316		70	80	140	33	46	78	9.6	17	105	55.04	53.31	UK216	H2316	3.23
UK216+HE2316	2-3/4		80	140	33	46	78	9.6	17	105	55.04	53.31	UK216	HE2316	3.24
UK217+H2317		75	85	150	35	48	82	10.5	18	110	63.98	63.69	UK217	H2317	3.93
UK217+HE2317	3		85	150	35	48	82	10.5	18	110	63.98	63.69	UK217	HE2317	3.84
UK218+H2318		80	90	160	37	50	66	11.1	18	120	73.83	70.76	UK218	H2318	4.75
UK218+HE2318	3-1/8		90	160	37	50	66	11.1	18	120	73.83	70.76	UK218	HE2318	4.80



MONDIALTECH
Forniture Industriali

Via Raimondo Dalla Costa 240/b
41100 MODENA - ITALY
Tel. +39 059 250090 Fax: +39 059 260083
Codice R.E.A. 354046
Partita IVA E. Codice Fiscale: 03061810366
e-Mail: monditecinfo@mondialtech.net
Web: <http://www.mondialtech.net>

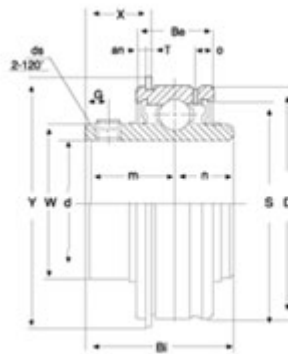
Vasto assortimento di Cuscinetti SKF - FAG

LK
Prepared to Order

CSC
Crucial Standard

MONDIAL
Cuscinetti a Balli

SER serie 200



Tipo No.	Dimensioni mm															Basic Load Rating kg		Peso (kg)
	d	D	Bi	Be	n	m	G	ds	o	W	an	T	Y (Max.)	X	S	Dynamic (C)	Static (Co)	
SER201	12	47	31	15.9	10.3	20.7	4.5	M6*1	3.8	29	2.38	1.07	52.7	16.15	41	1310	630	0.27
SER201-8	1/2	1.8504	1 ¹ /32	5/8	13/32	13/16	0.177	1/4-28	0.150	1.142	3/32	0.042	2.075	0.636	1.614	2890	1390	0.27
SER202	15	47	31	15.9	10.3	20.7	4.5	M6*1	3.8	29	2.38	1.07	52.7	16.15	41	1310	630	0.25
SER202-9	9/16	1.8504	1 ¹ /32	5/8	13/32	13/16	0.177	1/4-28	0.150	1.142	3/32	0.042	2.075	0.636	1.614	2890	1390	0.25
SER202-10	5/8	1.8504	1 ⁷ /32	5/8	13/32	13/16	0.177	1/4-28	0.150	1.142	3/32	0.042	2.075	0.636	1.614	2890	1390	0.25
SER203	17	47	31	15.9	10.3	20.7	4.5	M6*1	3.8	29	2.38	1.07	52.7	16.15	41	1310	630	0.23
SER203-11	11/16	1.8504	1 ⁷ /32	5/8	13/32	13/16	0.177	1/4-28	0.150	1.142	3/32	0.042	2.075	0.636	1.614	2890	1390	0.23
SER204	20	47	31	15.9	10.3	20.7	4.5	M6*1	3.8	29	2.38	1.07	52.7	16.15	41	1310	630	0.22
SER204-12	3/4	1.8504	1 ⁷ /32	5/8	13/32	13/16	0.177	1/4-28	0.150	1.142	3/32	0.042	2.075	0.636	1.614	2890	1390	0.22
SER205	25	52	34.9	19	13.1	21.8	5.5	M6*1	5.2	34	2.38	1.07	57.9	15.75	46	1430	710	0.28
SER205-14	7/8	2.0472	1 ³ /8	3/4	33/64	55/64	0.197	1/4-28	13/64	1.339	3/32	0.042	2.280	0.620	1.811	3150	1560	0.28
SER205-15	15/16	2.0472	1 ³ /8	3/4	33/64	55/64	0.197	1/4-28	13/64	1.339	3/32	0.042	2.280	0.620	1.811	3150	1560	0.28
SER205-16	1	2.0472	1 ³ /8	3/4	33/64	55/64	0.197	1/4-28	13/64	1.339	3/32	0.042	2.280	0.620	1.811	3150	1560	0.28
SER206	30	62	38.1	22.2	15.9	22.2	5	M6*1	5.6	40.5	3.18	1.65	67.7	15.93	54.3	2000	1020	0.38
SER206-17	1 ¹¹ /16	2.4409	1 ¹ /2	7/8	5/8	7/8	0.197	1/4-28	7/32	1.339	1/8	0.065	2.665	0.628	2.138	4410	2250	0.38
SER206-18	1 ¹ /8	2.4409	1 ¹ /2	7/8	5/8	7/8	0.197	1/4-28	7/32	1.339	1/8	0.065	2.665	0.628	2.138	4410	2250	0.38
SER206-19	1 ³ /16	2.4409	1 ¹ /2	7/8	5/8	7/8	0.197	1/4-28	7/32	1.339	1/8	0.065	2.665	0.628	2.138	4410	2250	0.38
SER207	35	72	42.9	23.8	17.5	25.4	6	M8*1.0	5.6	48	3.18	1.65	78.6	18.32	63.5	2640	1400	0.56
SER207-20	1 ¹ /4	2.8346	1 ¹¹ /16	15/16	11/16	1	0.236	5/16-24	7/32	1.890	1/8	0.065	3.095	0.721	2.500	5820	3090	0.56
SER207-21	1 ⁵ /16	2.8346	1 ¹¹ /16	15/16	11/16	1	0.236	5/16-24	7/32	1.890	1/8	0.065	3.095	0.721	2.500	5820	3090	0.56



MONDIALTECH

Forniture Industriali

Via Raimondo Dalla Costa 240/b
 41100 MODENA - ITALY
 Tel. +39 059 250090 Fax. +39 059 260083
 Codice R.E.A. 354046
 Partita IVA E. Codice Fiscale: 03061810366
 e-Mail: monditecinfo@mondialtech.net
 Web: <http://www.mondialtech.net>



Vasto assortimento di Cuscinetti SKF - FAG

Tipo No.	Dimensioni mm															Basic Load Rating kg		Peso (kg)
	d	D	Bi	Be	n	m	G	ds	o	W	an	T	Y (Max.)	X	S	Dynamic (C)	Static (Co)	
SER207-22	1 ³ / ₈	2.8346	1 ¹¹ / ₁₆	15/16	11/16	1	0.236	5/16-24	7/32	1.890	1/8	0.065	3.095	0.721	2.500	5820	3090	0.56
SER207-23	1 ⁷ / ₁₆	2.8346	1 ¹¹ / ₁₆	15/16	11/16	1	0.236	5/16-24	7/32	1.890	1/8	0.065	3.095	0.721	2.500	5820	3090	0.56
SER208	40	80	49.2	27.8	19	30.2	8	M8*1.0	6.4	53	3.18	1.65	86.6	21.1	69.3	2990	1600	0.87
SER208-24	1 ¹ / ₂	3.1496	1 ¹⁵ / ₁₆	1 ³ / ₃₂	3/4	1 ³ / ₁₆	0.315	5/16-24	1/4	2.087	1/8	0.065	3.410	0.831	2.728	6590	3530	0.87
SER208-25	1 ⁹ / ₁₆	3.1496	1 ¹⁵ / ₁₆	1 ³ / ₃₂	3/4	1 ³ / ₁₆	0.315	5/16-24	1/4	2.087	1/8	0.065	3.410	0.831	2.728	6590	3530	0.87
SER209	45	85	49.2	27.8	19	30.2	8	M8*1.0	6.4	53	3.18	1.65	91.6	21.1	74.3	3350	1810	0.95
SER209-26	1 ⁵ / ₈	3.3465	1 ¹⁵ / ₁₆	1 ³ / ₃₂	3/4	1 ³ / ₁₆	0.315	5/16-24	1/4	2.087	1/8	0.065	3.606	0.831	2.925	7390	3990	0.95
SER209-27	1 ¹¹ / ₁₆	3.3465	1 ¹⁵ / ₁₆	1 ³ / ₃₂	3/4	1 ³ / ₁₆	0.315	5/16-24	1/4	2.087	1/8	0.065	3.606	0.831	2.925	7390	3990	0.95
SER209-28	1 ³ / ₄	3.3465	1 ¹⁵ / ₁₆	1 ³ / ₃₂	3/4	1 ³ / ₁₆	0.315	5/16-24	1/4	2.087	1/8	0.065	3.606	0.831	2.925	7390	3990	0.95
SER210	50	90	51.6	28.6	19	32.6	9	M10*1.25	7.5	63	3.18	2.41	96.5	23.84	79.7	3600	2010	1.03
SER210-30	1 ⁷ / ₈	3.5433	2 ¹ / ₃₂	1 ¹ / ₈	3/4	1 ⁹ / ₃₂	0.354	3/8-24	1 ⁹ / ₆₄	2.480	1/8	0.095	4.193	0.939	3.571	7940	4430	1.03
SER210-31	1 ¹⁵ / ₁₆	3.5433	2 ¹ / ₃₂	1 ¹ / ₈	3/4	1 ⁹ / ₃₂	0.354	3/8-24	1 ⁹ / ₆₄	2.480	1/8	0.095	4.193	0.939	3.571	7940	4430	1.03
SER211	55	100	55.6	30.2	22.2	33.4	9	M10*1.25	7.5	70	3.18	2.41	106.5	23.84	90.7	4400	2550	1.21
SER211-32	2	3.9370	2 ³ / ₁₆	1 ³ / ₁₆	7/8	1 ⁵ / ₁₆	0.354	3/8-24	1 ⁹ / ₆₄	2.756	1/8	0.095	4.193	0.939	3.571	9700	5620	1.21
SER211-34	2 ¹ / ₈	3.9370	2 ³ / ₁₆	1 ³ / ₁₆	7/8	1 ⁵ / ₁₆	0.354	3/8-24	1 ⁹ / ₆₄	2.756	1/8	0.095	4.193	0.939	3.571	9700	5620	1.21
SER211-35	2 ³ / ₁₆	3.9370	2 ³ / ₁₆	1 ³ / ₁₆	7/8	1 ⁵ / ₁₆	0.354	3/8-24	1 ⁹ / ₆₄	2.756	1/8	0.095	4.193	0.939	3.571	9700	5620	1.21
SER212	60	110	65.1	31.8	25.4	33.4	10	M10*1.25	7.5	77	3.18	2.41	116.6	29.4	100	5350	3150	1.68
SER212-36	2 ¹ / ₄	4.3307	2 ⁹ / ₁₆	1 ¹ / ₄	1	1 ⁹ / ₁₆	0.394	3/8-24	1 ⁹ / ₆₄	3.031	1/8	0.095	4.591	1.158	3.937	11800	6940	1.68
SER212-38	2 ³ / ₈	4.3307	2 ⁹ / ₁₆	1 ¹ / ₄	1	1 ⁹ / ₁₆	0.394	3/8-24	1 ⁹ / ₆₄	3.031	1/8	0.095	4.591	1.158	3.937	11800	6940	1.68
SER212-39	2 ⁷ / ₁₆	4.3307	2 ⁹ / ₁₆	1 ¹ / ₄	1	1 ⁹ / ₁₆	0.394	3/8-24	1 ⁹ / ₆₄	3.031	1/8	0.095	4.591	1.158	3.937	11800	6940	1.68



MONDIALTECH
Forniture Industriali

Via Raimondo Dalla Costa 240/b
41100 MODENA - ITALY
Tel. +39 059 256090 Fax. +39 059 260883
Codice R.E.A. 354046
Partita IVA E. Codice Fiscale: 03661810366
e-Mail: mondialtech@mondialtech.net
Web: <http://www.mondialtech.net>

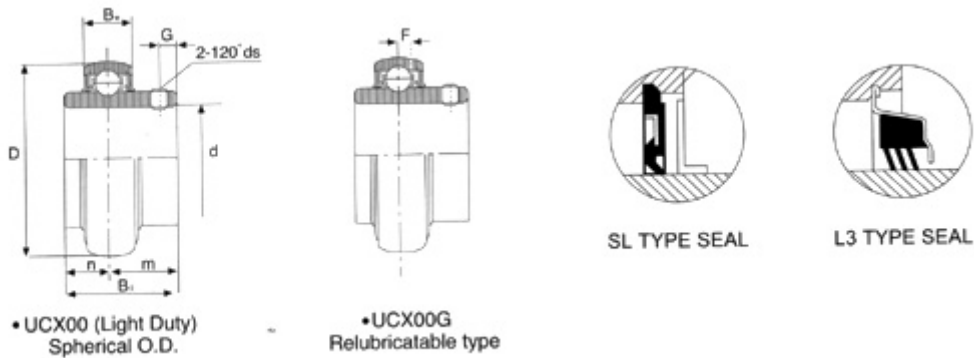
Vasto assortimento di Cuscinetti SKF - FAG

LK
Prepared to Order

CSC
Cuscinetti Standard

MONDIAL
Cuscinetti a Balli

UCX serie 200



Tipo No.	Albero Diam.		Dimensioni (mm)							ratings		Peso (kg)	
	(mm)	(in)	D	Bi	Be	n	m	G	ds	F	N		N
UCX05	25		62	38.1	19	15.9	22.2	5	M6X1	5.0	14970	10040	0.39;
UCX05-13	13/16	2.4409	1.5000	0.7480	0.626	0.874	0.197	1/4-28UNF	0.197	14970	10040	0.39;	
UCX05-14	7/8	2.4409	1.5000	0.7480	0.626	0.874	0.197	1/4-28UNF	0.197	14970	10040	0.39;	
UCX05-15	15/16	2.4409	1.5000	0.7480	0.626	0.874	0.197	1/4-28UNF	0.197	14970	10040	0.39;	
UCX05-16	1	2.4409	1.5000	0.7480	0.626	0.874	0.197	1/4-28UNF	0.197	14970	10040	0.39;	
UCX06	30		72	42.9	20	17.5	25.4	6	M8X1	5.7	19750	13670	0.68;
UCX06-17	1-1/16	2.8346	1.6890	0.7874	0.689	1.000	0.276	5/16-24UNF	0.224	19750	13670	0.68;	
UCX06-18	1-1/8	2.8346	1.6890	0.7874	0.689	1.000	0.276	5/16-24UNF	0.224	19750	13670	0.68;	
UCX06-19	1-3/16	2.8346	1.6890	0.7874	0.689	1.000	0.276	5/16-24UNF	0.224	19750	13670	0.68;	
UCX06-20		2.8346	1.6890	0.7874	0.689	1.000	0.276	5/16-24UNF	0.224	19750	13670	0.68;	
UCX07	35		80	49.2	22	19	30.2	8	M8X1	6.2	22710	15940	0.82;
UCX07-21	1-5/16	3.1496	1.9370	0.8268	0.748	1.189	0.315	5/16-24UNF	0.244	22710	15940	0.82;	
UCX07-22	1-3/8	3.1496	1.9370	0.8268	0.748	1.189	0.315	5/16-24UNF	0.244	22710	15940	0.82;	
UCX07-23	1-7/16	3.1496	1.9370	0.8268	0.748	1.189	0.315	5/16-24UNF	0.244	22710	15940	0.82;	
UCX08	40		85	49.2	22	19	30.2	8	M8X1	6.4	24360	17710	0.93;
UCX08-24	1-1/2	3.3465	1.9370	0.8661	0.748	1.189	0.315	5/16-24UNF	0.252	24360	17710	0.93;	
UCX08-25	1-9/16	3.3465	1.9370	0.8661	0.748	1.189	0.315	5/16-24UNF	0.252	24360	17710	0.93;	
UCX09	45		90	51.6	24	19	32.6	10	M10X1	6.5	26980	19840	1.00;
UCX09-26	1-5/8	3.5433	2.0315	0.9449	0.748	1.283	0.394	3/8-24UNF	0.256	26980	19840	1.00;	



MONDIALTECH

Forniture Industriali

Via Raimondo Dalla Costa 240/b
41100 MODENA - ITALY
Tel. +39 059 250090 Fax. +39 059 260083
Codice R.E.A. 354046
Partita IVA E. Codice Fiscale: 03061810366
e-Mail: monditecinfo@mondialtech.net
Web: <http://www.mondialtech.net>

Vasto assortimento di Cuscinetti SKF - FAG



Tipo No.	Albero Diam. d (mm) (in)	Dimensioni (mm) (in)								ratings N	ratings N	Peso (kg)
		D	Bi	Be	n	m	G	ds	F			
UCX09-27	1-11/16	3.5433	2.0315	0.9449	0.748	1.283	0.394	3/8-24UNF	0.256	26980	19840	1.00;
UCX09-28	1-3/4	3.5433	2.0315	0.9449	0.748	1.283	0.394	3/8-24UNF	0.256	26980	19840	1.00;
UCX10	50	100	55.6	25	22.2	33.4	10	M10X1	7.0	33370	25110	1.35;
UCX10-30	1-7/8	3.9370	2.1890	0.9843	0.874	1.315	0.394	3/8-24UNF	0.276	33370	25110	1.35;
UCX10-31	1-15/16	3.9370	2.1890	0.9843	0.874	1.315	0.394	3/8-24UNF	0.276	33370	25110	1.35;
UCX11	55	110	65.1	27	25.4	39.7	10	M10X1	7.6	36740	27970	1.90;
UCX11-33	2-1/16	4.3307	2.5630	1.0630	1.000	1.563	0.394	3/8-24UNF	0.299	36740	27970	1.90;
UCX11-34	2-1/8	4.3307	2.5630	1.0630	1.000	1.563	0.394	3/8-24UNF	0.299	36740	27970	1.90;
UCX11-35	2-3/16	4.3307	2.5630	1.0630	1.000	1.563	0.394	3/8-24UNF	0.299	36740	27970	1.90;
UCX11-36		4.3307	2.5630	1.0630	1.000	1.563	0.394	3/8-24UNF	0.299	36740	27970	1.90;
UCX12	60	120	65.1	30	25.4	39.7	10	M10X1	8.5	44010	34180	2.27;
UCX12-38	2-3/8	4.3307	2.5630	1.1024	1.00	1.563	0.394	3/8-24UNF	0.335	44010	34180	2.27;
UCX12-39	2-7/16	4.3307	2.5630	1.1024	1.00	1.563	0.394	3/8-24UNF	0.335	44010	34180	2.27;
UCX13	65	125	74.6	30	30.2	44.4	12	M12X1.5	8.9	46790	37590	2.45;
UCX13-40	2-1/2	4.9213	2.9370	1.1417	1.189	1.748	0.472	1/2-20UNF	0.350	46790	37590	2.45;
UCX13-41	2-9/16	4.9213	2.9370	1.1417	1.189	1.748	0.472	1/2-20UNF	0.350	46790	37590	2.45;
UCX14	70	130	77.8	32	33.3	44.5	12	M12X1.5	9.2	50850	41260	2.47;
UCX14-42	2-3/8	5.1181	3.0630	1.1811	1.311	1.752	0.472	1/2-20UNF	0.362	50850	41260	2.47;
UCX14-43	2-11/16	5.1181	3.0630	1.1811	1.311	1.752	0.472	1/2-20UNF	0.362	50850	41260	2.47;
UCX14-44	2-3/4	5.1181	3.0630	1.1811	1.311	1.752	0.472	1/2-20UNF	0.362	50850	41260	2.47;
UCX15	75	140	82.6	33	33.3	49.3	12	M12X1.5	9.5	55040	45090	3.11;
UCX15-45	2-13/16	5.5118	3.2520	1.2598	1.311	1.9409	0.472	1/2-20UNF	0.374	55040	45090	3.11;
UCX15-46	2-7/8	5.5118	3.2520	1.2598	1.311	1.9409	0.472	1/2-20UNF	0.374	55040	45090	3.11;
UCX15-47	2-15/16	5.5118	3.2520	1.2598	1.311	1.9409	0.472	1/2-20UNF	0.374	55040	45090	3.11;
UCX15-48	3	5.5118	3.2520	1.2598	1.311	1.9409	0.472	1/2-20UNF	0.374	55040	45090	3.11;
UCX16	80	150	85.7	35	34.1	51.6	12	M12X1.5	10.2	64010	53280	3.79;
UCX16-49	3-1/16	5.9055	3.3740	1.3386	1.343	2.031	0.472	1/2-20UNF	0.402	64010	53280	3.79;
UCX16-50	3-1/8	5.9055	3.3740	1.3386	1.343	2.031	0.472	1/2-20UNF	0.402	64010	53280	3.79;
UCX16-51	3-3/16	5.9055	3.3740	1.3386	1.343	2.031	0.472	1/2-20UNF	0.402	64010	53280	3.79;
UCX17	85	160	96	37	39.7	56.3	12	M12X1.5	11.2	73830	60760	4.82;
UCX17-53	3-5/16	6.2992	3.7795	1.4173	1.5630	2.217	0.472	1/2-20UNF	0.441	73830	60760	4.82;
UCX17-55	3-7/16	6.2992	3.7795	1.4173	1.5630	2.217	0.472	1/2-20UNF	0.441	73830	60760	4.82;



MONDIALTECH
Forniture Industriali

Via Raimondo Dalla Costa 240/b
41100 MODENA - ITALY
Tel. +39 059 250090 Fax. +39 059 260083
Codice R.E.A. 354046
Partita IVA E. Codice Fiscale: 03061810366
e-Mail: mondialtech@mondialtech.net
Web: <http://www.mondialtech.net>

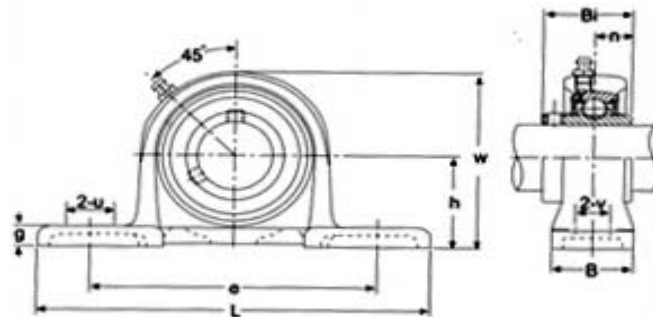
Vasto assortimento di Cuscinetti SKF - FAG

LK
Prepared to Order

CSC
Cuscinetti Standard

MONDIAL
Cuscinetti a Balli

SSUCP serie 200



Tipo No.	Albero diam. mm	Dimensioni -mm										Vite Tipo mm	Cuscin. No.	Corpo No.	Peso (kg)
		h	l	e	B	v	u	g	w	Bi	n				
SSUCP204	20	33.3	127	95	38	13	19	14	64	31	12.7	M10	SUC204	SP204	0.57
SSUCP205	25	36.5	140	105	38	13	19	15	70	34.1	14.3	M10	SUC205	SP205	0.74
SSUCP206	30	42.9	165	121	46	17	21	16	82	38.1	15.9	M14	SUC206	SP206	1.09
SSUCP207	35	47.6	167	127	48	17	21	17	92	42.9	17.5	M14	SUC207	SP207	1.44
SSUCP208	40	49.2	184	137	54	17	21	18	98	49.2	19	M14	SUC208	SP208	1.72
SSUCP209	45	54	190	146	54	17	22	20	105	49.2	19	M14	SUC209	SP209	2.01
SSUCP210	50	57.2	206	159	60	20	25	21	112	51.6	19	M16	SUC210	SP210	2.36



MONDIALTECH
Forniture Industriali

Via Raimondo Dalla Costa 240/b
41100 MODENA - ITALY
Tel. +39 059 250090 Fax: +39 059 260083
Codice R.E.A. 354046
Partita IVA E. Codice Fiscale: 03061810366
e-Mail: mondialtech@mondialtech.net
Web: <http://www.mondialtech.net>

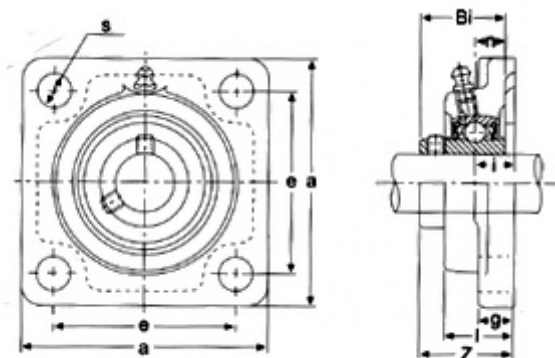
Vasto assortimento di Cuscinetti SKF - FAG

LK
Pagamenti di Qualità

CSC
Cuscinetti Standard

MONDIAL
Cuscinetti a Balli

SSUCF serie 200



Tipo No.	Albero diam. mm	Dimensioni -mm									Vite Tipo mm	Cuscin. No.	Corpo No.	Peso (kg)
		a	e	i	g	l	s	Z	Bi	n				
SSUCF204	20	86	64	15	12	25.5	11	33.3	64	12.7	M10	SUC204	SF204	0.65
SSUCF205	25	95	70	16	13	27	12	35.7	70	14.3	M10	SUC205	SF205	0.91
SSUCF206	30	106	83	18	14	31	13	40.2	82	15.9	M14	SUC206	SF206	1.21
SSUCF207	35	117	92	19	15.5	34	13	44.4	92	17.5	M14	SUC207	SF207	1.61
SSUCF208	40	130	102	21	15	36	14	51.2	98	19	M14	SUC208	SF208	2.17
SSUCF209	45	137	105	22	16	38	16	52.2	105	19	M14	SUC209	SF209	2.58
SSUCF210	50	143	111	22	16	40	16	54.6	112	19	M16	SUC210	SF210	2.68



MONDIALTECH
Forniture Industriali

Via Raimondo Dalla Costa 240/b
41100 MODENA - ITALY
Tel. +39 059 250090 Fax: +39 059 260083
Codice R.E.A. 354046
Partita IVA E. Codice Fiscale: 03061810366
e-Mail: mondialtech@mondialtech.net
Web: <http://www.mondialtech.net>

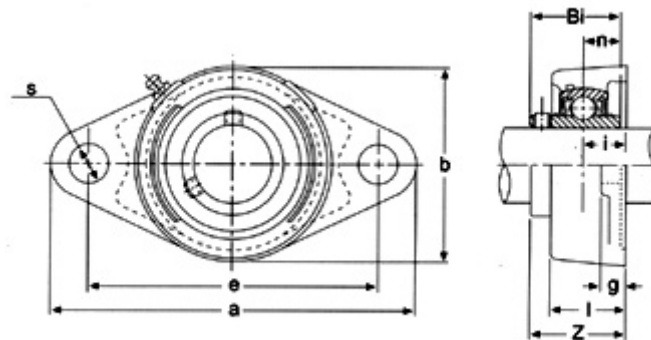
Vasto assortimento di Cuscinetti SKF - FAG

LK
Prestigi e Qualità

CSC
Cuscinetti Normali

MONDIAL
Cuscinetti a Balli

SSUCFL serie 200



Tipo No.	Albero diam. mm	Dimensioni -mm										Vite Tipo mm	Cuscin. No.	Corpo No.	Peso (kg)
		a	e	i	g	l	s	b	Z	Bi	n				
SSUCFL204	20	113	90	15	10	25.5	12	60	33.3	31	12.7	M10	SUC204	SFL204	0.40
SSUCFL205	25	130	99	16	10	27	16	68	35.7	34.1	14.3	M10	SUC205	SFL205	0.57
SSUCFL206	30	148	117	18	11	31	16	80	40.2	38.1	15.9	M14	SUC206	SFL206	0.92
SSUCFL207	35	161	130	19	12	34	16	90	44.4	42.9	17.5	M14	SUC207	SFL207	1.22
SSUCFL208	40	175	144	21	15	36	16	100	51.2	49.2	19	M14	SUC208	SFL208	1.55
SSUCFL209	45	188	148	22	16	38	19	108	52.2	49.2	19	M14	SUC209	SFL209	1.90
SSUCFL210	50	197	157	22	16	40	19	115	54.6	51.6	19	M16	SUC210	SFL210	2.19



MONDIALTECH
Forniture Industriali

Via Raimondo Dalla Costa 240/b
41100 MODENA - ITALY
Tel. +39 059 256090 Fax: +39 059 260883
Codice R.E.A. 354046
Partita IVA E. Codice Fiscale: 03061810366
e-Mail: mondialtech@mondialtech.net
Web: <http://www.mondialtech.net>

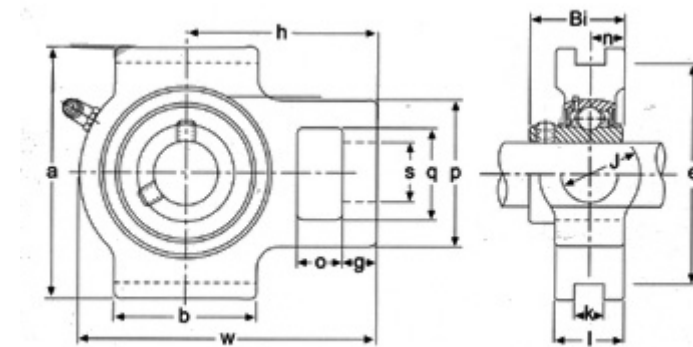
Vasto assortimento di Cuscinetti SKF - FAG

LK
Pignoni di Qualità

CSC
Cuscinetti Normalizzati

MONDIAL
Cuscinetti a Balli

SSUCT serie 200



Tipo No.	Albero diam. mm	Dimensioni -mm														Vite Tipo mm	Cuscin. No.	Corpo No.	Peso kg	
		o	g	p	q	s	b	k	e	a	w	j	l	h	Bi					n
SSUCT204	20	16	10	51	32	19	51	12	76	89	94	32	21	61	31	12.7	M10	SUC204	ST204	0.65
SSUCT205	25	16	10	51	32	19	51	12	76	89	97	32	24	62	34	14.3	M10	SUC205	ST205	0.91
SSUCT206	30	16	10	56	37	22	57	12	89	102	113	37	28	70	38.1	15.9	M14	SUC206	ST206	1.21
SSUCT207	35	16	13	64	37	22	64	12	89	102	129	37	30	78	42.1	17.5	M14	SUC207	ST207	1.61
SSUCT208	40	19	16	83	37	22	83	16	102	114	144	49	33	88	49.2	19	M14	SUC208	ST208	2.17
SSUCT209	45	19	16	83	39	29	83	16	114	117	144	49	35	87	49.2	19	M14	SUC209	ST209	2.58
SSUCT210	50	19	16	83	49	29	86	16	117	117	149	49	37	90	51.6	19	M16	SUC210	ST210	2.68



MONDIALTECH
Forniture Industriali

Via Raimondo Dalla Costa 240/b
41100 MODENA - ITALY
Tel. +39 059 250090 Fax: +39 059 260083
Codice R.E.A. 354046
Partita IVA E Codice Fiscale: 03061810366
e-Mail: monditecinfo@mondialtech.net
Web: <http://www.mondialtech.net>

Vasto assortimento di Cuscinetti SKF - FAG

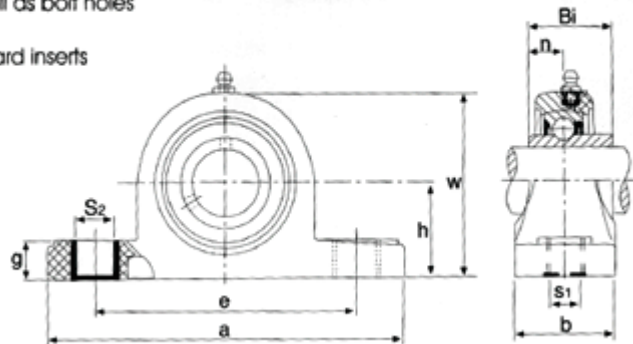
LK
Supporti di Qualità

CSC
Cuscinetti Standard

MONDIAL
Cuscinetti a Balli

TP-P 200

- Material: Reinforced PBT
- Solid base
- Stainless steel grease nipples are standard as well as bolt holes
- All inch size available
- Also available with black oxide inserts and standard inserts



Corpo No.	Cuscinetto No.	Diam.Foro Cuscinetto	Dimensioni (mm)										Vite Tipo.	Peso (kg)
		(mm)	h	a	e	b	s1	s2	g	w	Bi	n		
TP-P201	SUC201	12	33.3	127	95	38	11	14	14.2	65.5	31	12.7	M10	0.13
TP-P202	SUC202	15	33.3	127	95	38	11	14	14.2	65.5	31	12.7	M10	0.13
TP-P203	SUC203	17	33.3	127	95	38	11	14	14.2	65.5	31	12.7	M10	0.13
TP-P204	SUC204	20	33.3	127	95	38	11	14	14.2	65.5	31	12.7	M10	0.13
TP-P205	SUC205	25	36.5	140.5	105	38	11	14	14.5	71	34.1	14.3	M10	0.14
TP-P206	SUC206	30	42.9	163	119	46	14	18	17.8	84	38.1	15.9	M12	0.25
TP-P207	SUC207	35	47.6	168	127	48	14	18	18	94.5	42.9	17.5	M12	0.27
TP-P208	SUC208	40	49.2	184	137	54	14	18	19.5	99	49.2	19	M12	0.32
TP-P209	SUC209	45	54	192	146	54	17	20	23	106	42.9	19	M16	0.37
TP-P210	SUC210	50	57.2	206	159	60	17	20	23	114	51.6	19	M16	0.42



MONDIALTECH
Forniture Industriali

Via Raimondo Dalla Costa 240/b
41100 MODENA - ITALY
Tel. +39 059 250090 Fax. +39 059 260083
Codice R.E.A. 354046
Partita IVA E. Codice Fiscale: 03061810366
e-Mail: mondialtech@mondialtech.net
Web: <http://www.mondialtech.net>

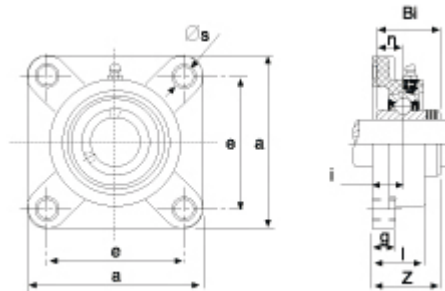
Vasto assortimento di Cuscinetti SKF - FAG

LK
Prestigi e Qualità

CSC
Cuscinetti Standard

MONDIAL
Cuscinetti a Balli

TP-F 200



Corpo No.	Cuscinetto No.	Diam. Foro Cuscinetto	Dimensioni (mm)									Vite Tipo	Peso (kg)
			a	b	g	l	s	z	i	Bi	n		
TP-F201	SUC201	12	86	63.5	13.4	27.8	11	36.3	18	31	12.7	M10	0.13
TP-F202	SUC202	15	86	63.5	13.4	27.8	11	36.3	18	31	12.7	M10	0.13
TP-F203	SUC203	17	86	63.5	13.4	27.8	11	36.3	18	31	12.7	M10	0.13
TP-F204	SUC204	20	86	63.5	13.4	27.8	11	36.3	18	31	12.7	M10	0.13
TP-F205	SUC205	25	95	70	14	28	11	36.7	17	34.1	14.3	M10	0.14
TP-F206	SUC206	30	107	83	14.3	31.5	11	41.4	19.2	38.1	15.9	M10	0.21
TP-F207	SUC207	35	118	92	15.5	34.8	13	46.9	21.5	42.9	17.5	M12	0.26
TP-F208	SUC208	40	130	102	17	37.5	14	53.2	23	49.2	19	M12	0.34
TP-F209	SUC209	45	137	105	19	41	17	54.2	24	49.2	19	M16	0.41
TP-F210	SUC210	50	143	111	21	43	17	57.6	25	51.6	19	M16	0.44



MONDIALTECH
Forniture Industriali

Via Raimondo Dalla Costa 240/b
41100 MODENA - ITALY
Tel. +39 059 250090 Fax. +39 059 260083
Codice R.E.A. 354046
Partita IVA E. Codice Fiscale: 03061810366
e-Mail: monditecinfo@mondialtech.net
Web: <http://www.mondialtech.net>

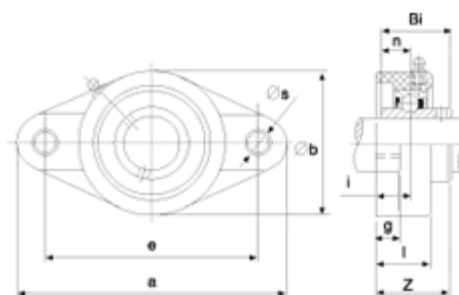
Vasto assortimento di Cuscinetti SKF - FAG

LK
Pignoni di Qualità

CSC
Cuscinetti Normalizzati

MONDIAL
Cuscinetti a Balli

TP-FL 200



Corpo No.	Cuscin. No.	Diam. Foro Cuscinetto	Dimensioni (mm)										Vite Tipo	Peso (kg)
			a	e	b	g	l	s	z	i	Bi	n		
TP-FL201	SUC201	12	113	90	65	11.4	26.5	11	33.7	15.4	31	12.7	M10	0.08
TP-FL202	SUC202	15	113	90	65	11.4	26.5	11	33.7	15.4	31	12.7	M10	0.08
TP-FL203	SUC203	17	113	90	65	11.4	26.5	11	33.7	15.4	31	12.7	M10	0.08
TP-FL204	SUC204	20	113	90	65	11.4	26.5	11	33.7	15.4	31	12.7	M10	0.08
TP-FL205	SUC205	25	131	99	69.5	13.5	29.1	11	36.7	17	34.1	14.3	M10	0.10
TP-FL206	SUC206	30	148	117	80	13.3	30.5	11	41.2	19	38.1	15.9	M10	0.13
TP-FL207	SUC207	35	164	130	90	16.1	32.8	13	43.4	18	42.9	17.5	M12	0.16
TP-FL208	SUC208	40	176	144	100	20	37.5	14	51.7	21.5	49.2	19	M12	0.24
TP-FL209	SUC209	45	188.5	148.5	106	21	41	17	54.2	24	49.2	19	M16	0.3
TP-FL210	SUC210	50	197	157	115	21	43	17	57.6	25	51.6	19	M16	0.33



MONDIALTECH
Forniture Industriali

Via Raimondo Dalla Costa 240/b
41100 MODENA - ITALY
Tel. +39 059 256090 Fax: +39 059 260883
Codice R.E.A. 354046
Partita IVA E Codice Fiscale: 03661810366
e-Mail: mondialtech@mondialtech.net
Web: <http://www.mondialtech.net>

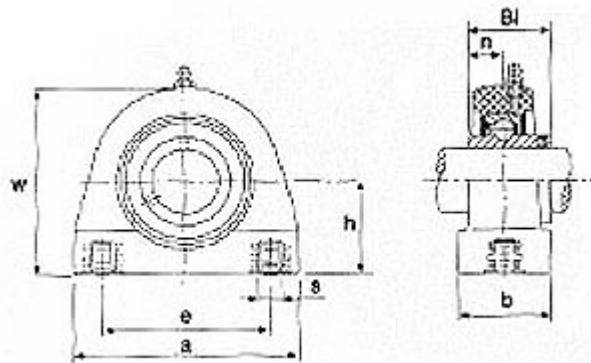
Vasto assortimento di Cuscinetti SKF - FAG

LK
Prestigiati di Qualità

CSC
Cuscinetti Standard

MONDIAL
Cuscinetti a Balli

TP-PA 200



Corpo No.	Cuscinetto NO.	Diam.Foro Cuscinetto (mm)	Dimensioni (mm)								Vite Tipo	Peso (Kg)
			h	b	w	e	a	s	Bi	n		
TP-PA203	SUC203	17	33.3	34.5	64	52	76	M8	31	12.7	M8	0.10
TP-PA204	SUC204	20	33.3	38	64	52	76	M8	31	12.7	M8	0.10
TP-PA205	SUC205	25	33.3	38	72	56	84	M10	34.1	14.3	M10	0.14
TP-PA206	SUC206	30	33.3	48	84	66	94	M10	38.1	15.9	M10	0.20
TP-PA207	SUC207	35	47.6	48	95	80	110	M10	42.9	17.5	M10	0.24
TP-PA208	SUC208	40	49.2	54	100	84	116	M12	49.2	19	M12	0.28
TP-PA209	SUC209	45	54.2	54	108	90	120	M12	49.2	19	M12	0.35
TP-PA210	SUC210	50	57.2	60	116	94	130	M16	51.6	19	M16	0.45



MONDIALTECH
Forniture Industriali

Via Raimondo Dalla Costa 240/b
41100 MODENA - ITALY
Tel. +39 059 256090 Fax: +39 059 260883
Codice R.E.A. 354046
Partita IVA E Codice Fiscale: 03661810366
e-Mail: mondialtech@mondialtech.net
Web: <http://www.mondialtech.net>

Vasto assortimento di Cuscinetti SKF - FAG


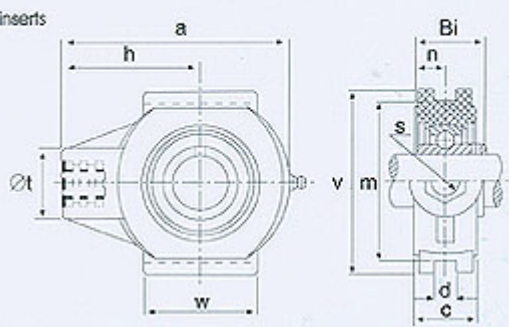
LK
Support & Quality

CSC
Customer Specialist

MONDIAL
Cuscinetti a Balli

TP-T 200

- Material: Reinforced PBT
- Solid base
- Stainless steel grease nipples are standard as well as ball holes
- All inch size available
- Also available with black oxide inserts and standard inserts

Corpo No.	Cuscinetto No.	Diam.Foro Cuscin. (mm)	Dimensioni (mm)											Peso (Kg)
			a	c	d	h	m	s	t	v	w	Bi	n	
TP-T201	SUC201	12	99	27.5	12	64	76	M16	36	88	47	31	12.7	0.16
TP-T202	SUC202	15	99	27.5	12	64	76	M16	36	88	47	31	12.7	0.16
TP-T203	SUC203	17	99	27.5	12	64	76	M16	36	88	47	31	12.7	0.16
TP-T204	SUC204	20	99	27.5	12	64	76	M16	36	88	47	31	12.7	0.16
TP-T205	SUC205	25	99	27.5	12	64	76	M16	36	88	47	34.1	14.3	0.17
TP-T206	SUC206	30	125	34.5	12	76	89	M16	40	101.4	63	38.1	15.9	0.22
TP-T207	SUC207	35	125	34.5	12	76	89	M16	40	101.4	63	42.9	17.5	0.26
TP-T208	SUC208	40	140	34.5	16	85	102	M16	40	113.6	80	49.2	19	0.38
TP-T209	SUC209	45	149	40	16	90	102	M20	50	117	85	49.2	19	0.43
TP-T210	SUC210	45	149	40	16	90	102	M20	50	117	85	51.6	19	0.37



MONDIALTECH
Forniture Industriali

Via Raimondo Dalla Costa 240/b
41100 MODENA - ITALY
Tel. +39 059 250090 Fax: +39 059 260083
Codice R.E.A. 354046
Partita IVA E. Codice Fiscale: 03061810366
e-Mail: mondialtech@mondialtech.net
Web: <http://www.mondialtech.net>

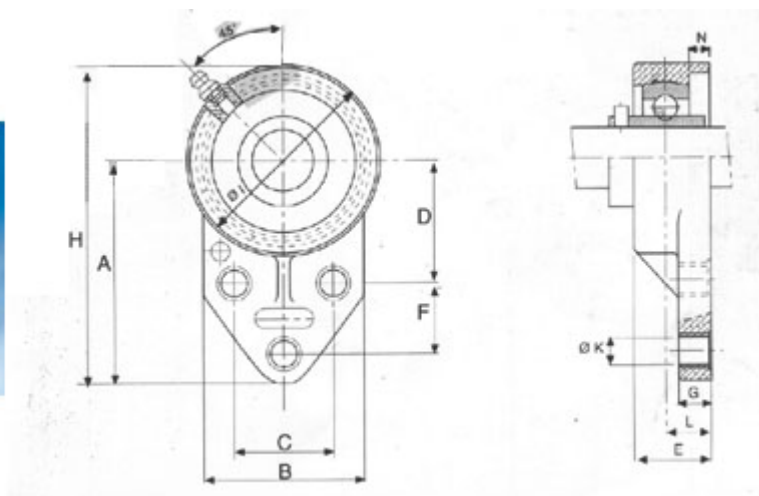
Vasto assortimento di Cuscinetti SKF - FAG

LK
Pagamenti di Qualità

CSC
Cuscinetti Standard

MONDIAL
Cuscinetti a Balli

TP-FB 200



Corpo No.	Cuscin. No.	Diam.Foro Cuscin. (mm)	Dimensioni (mm)													Vite Tipo	Peso (Kg)
			A	B	C	D	E	F	G	H	I	J	K	M	N		
TP-FB201	SUC201	12	76.2	62	38.1	42.9	33.7	22.2	11.4	108	63.5	26.5	10.7	18.3	12.7	M10	0.28
TP-FB202	SUC202	15	76.2	62	38.1	42.9	33.7	22.2	11.4	108	63.5	26.5	10.7	18.3	12.7	M10	0.26
TP-FB203	SUC203	17	76.2	62	38.1	42.9	33.7	22.2	11.4	108	63.5	26.5	10.7	18.3	12.7	M10	0.25
TP-FB204	SUC204	20	76.2	62	38.1	42.9	33.7	22.2	11.4	108	63.5	26.5	10.7	18.3	12.7	M10	0.25
TP-FB205	SUC205	25	85.7	63.5	41.3	46	41.2	28.6	11.4	120.6	70	34	10.7	19.7	14.3	M10	0.30
TP-FB206	SUC206	30	96.5	76	47.6	52.4	41.5	31.8	13.3	138.5	83	32	10.7	22.2	15.9	M10	0.46
TP-FB207	SUC207	35	109.5	89	50.8	60.3	47.1	31.8	16.1	157	95	36.5	13.1	25.4	17.5	M12	0.66



MONDIALTECH
Forniture Industriali

Via Raimondo Dalla Costa 240/b
41100 MODENA - ITALY
Tel. +39 059 256090 Fax: +39 059 260883
Codice R.E.A. 354046
Partita IVA E. Codice Fiscale: 03061810366
e-Mail: monditecinfo@mondialtech.net
Web: <http://www.mondialtech.net>

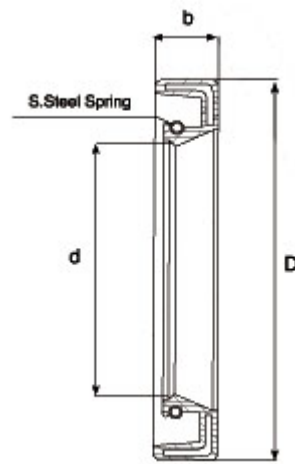
Vasto assortimento di Cuscinetti SKF - FAG

LK
Pignoni di Qualità

CSC
Cuscinetti Standard

MONDIAL
Cuscinetti a Balli

Anelli di Tenuta



Tipo	Dimensioni		
	d	b	D
BS204	20	6	52
BS205	25	6	62
BS206	30	6	72
BS207	35	6	82
BS208	40	6	88
BS209	45	6	93
BS210	50	6	98



MONDIALTECH
Forniture Industriali

Via Raimondo Dalla Costa 240/b
41100 MODENA - ITALY
Tel. +39 059 250090 Fax: +39 059 260083
Codice R.E.A. 354046
Partita IVA E. Codice Fiscale: 03061810366
e-Mail: mondialtech@mondialtech.net
Web: <http://www.mondialtech.net>

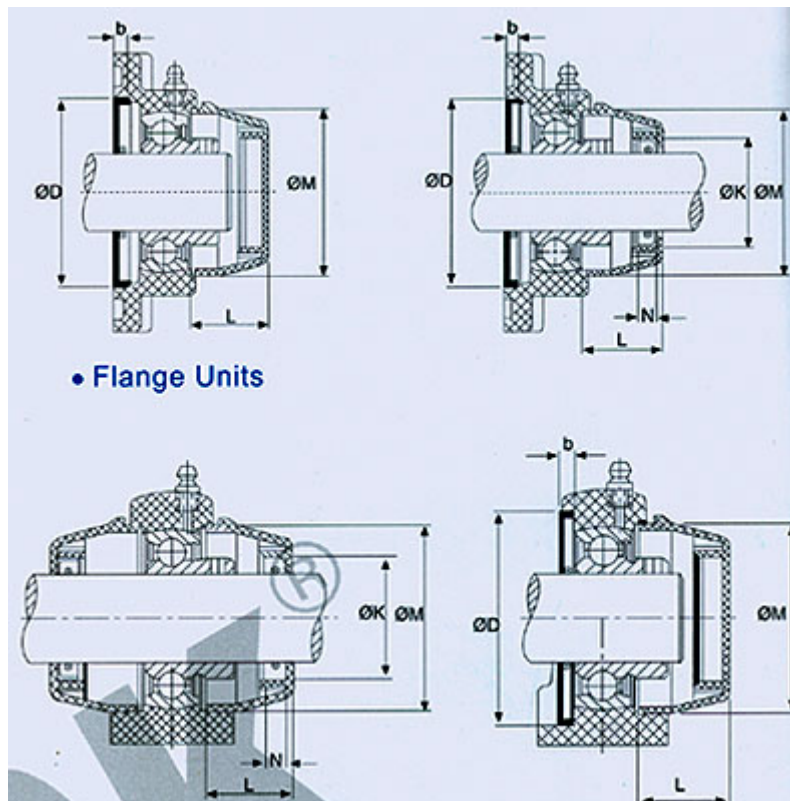
Vasto assortimento di Cuscinetti SKF - FAG

LK
Prepared to Order

CSC
Cuscinetti Standard

MONDIAL
Cuscinetti a Balli

Coperchi di Chiusura



Tipo		Diametro Albero		Dimensioni (mm)					
		mm	inch	K	N	L	M	D	b
OC201	OC201	12	1/2	32	7	23	50	52	6
OC202	OC202	15	9/16 5/8	32	7	23	50	52	6
OC203	OC203	17	11/16	32	7	23	50	52	6
OC204	OC204	20	3/4	32	7	23	50	52	6
OC205	OC205	25	13/16 7/8 15/16 1	37	7	25	55	62	6
OC206	OC206	30	17/16 9/8 19/16 5/4	42	7	30	64	72	6
OC207	OC207	35	5/4 31/16 11/8 23/16	47	7	32	74.5	82	6
OC208	OC208	40	3/2 25/16	52	7	37	84	88	6
OC209	OC209	45	13/8 27/16 7/4	57	7	41	89	93	6
OC210	OC210	50	29/16 15/8 31/16 2	62	7	47	94	98	6



MONDIALTECH
Forniture Industriali

Via Raimondo Dalla Costa 240/b
41100 MODENA - ITALY
Tel. +39 059 250090 Fax: +39 059 260083
Codice R.E.A. 354046
Partita IVA E. Codice Fiscale: 03061810366
e-Mail: monditecinfo@mondialtech.net
Web: <http://www.mondialtech.net>

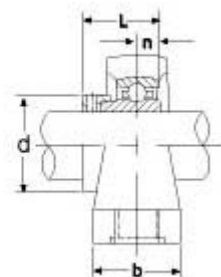
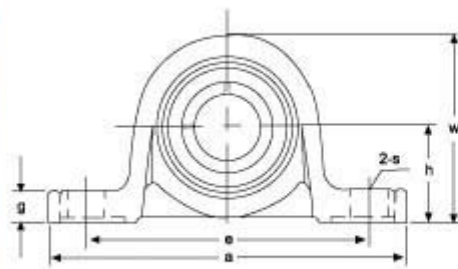
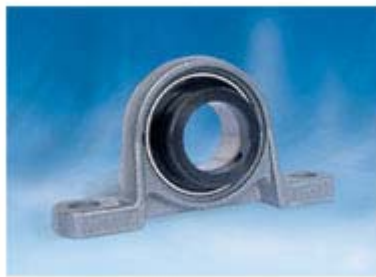
Vasto assortimento di Cuscinetti SKF - FAG

LK
Pagamenti di Qualità

CSC
Cuscinetti Standard

MONDIAL
Cuscinetti a Balli

UP serie 000



Tipo No.	Albero Diam. mm	Dimensioni-mm										Vite Tipo mm	Cuscinetto No.	Corpo No.	Peso (Kg)
		h	a	e	b	s	g	w	L	n	d				
UP000	10	18	67	53	16	7	6	35	17.5	4	17	M6	U000	P000	0.17
UP001	12	19	71	56	16	7	6	38	17.5	4	19	M6	U001	P001	0.20
UP002	15	22	80	63	16	7	7	43	18.5	4.5	22	M6	U002	P002	0.28
UP003	17	24	85	67	18	7	7	47	20.5	5	25	M6	U003	P003	0.35
UP004	20	28	100	80	20	10	9	55	24.5	6	30	M8	U004	P004	0.52
UP005	25	32	112	90	20	10	10	62	25.5	6	36	M8	U005	P005	0.66
UP006	30	36	132	106	26	13	11	70	26.5	6.5	42	M10	U006	P006	1.01



MONDIALTECH
Forniture Industriali

Via Raimondo Dalla Costa 240/b
41100 MODENA - ITALY
Tel. +39 059 250090 Fax. +39 059 260083
Codice R.E.A. 354046
Partita IVA E. Codice Fiscale: 03061810366
e-Mail: mondialtech@mondialtech.net
Web: <http://www.mondialtech.net>

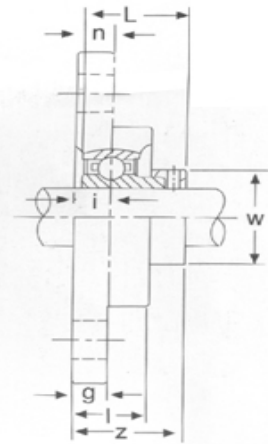
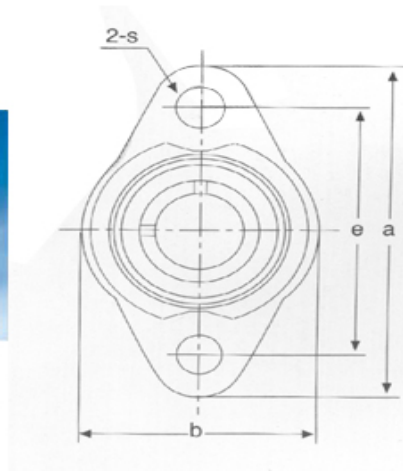
Vasto assortimento di Cuscinetti SKF - FAG

LK
Supporto di Qualità

CSC
Cuscinetti Normalizzati

MONDIAL
Cuscinetti a Balli

UFL serie 000



Tipo No.	Albero Diam. mm	Dimensioni -mm											Vite Tipo mm	Cuscinetto No.	Corpo No.	Peso (Kg)
		a	e	i	g	l	s	b	Z	L	n	w				
UFL000	10	60	45	5.5	5.5	11.5	7	36	19	17.5	4	17	M6	U000	FL000	0.14
UFL001	12	63	48	5.5	5.5	11.5	7	38	19	17.5	4	19	M6	U001	FL001	0.17
UFL002	15	67	53	6.5	6.5	7	7	42	20.5	18.5	4.5	22	M6	U002	FL002	0.22
UFL003	17	71	56	7	7	14	7	46	22.5	20.5	5	25	M6	U003	FL003	0.29
UFL004	20	90	71	8	8	16	10	55	26.5	24.5	6	30	M8	U004	FL004	0.46
UFL005	25	95	75	8	8	16	10	60	27.5	25.5	6	36	M8	U005	FL005	0.54
UFL006	30	112	85	9	9	18	13	70	29	26.5	6.5	42	M10	U006	FL006	0.79



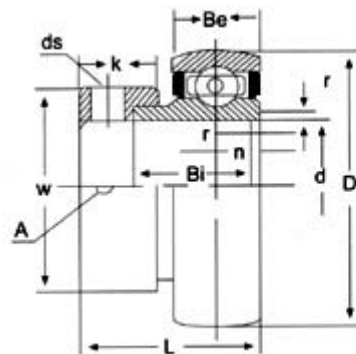
MONDIALTECH
Forniture Industriali

Via Raimondo Dalla Costa 240/b
41100 MODENA - ITALY
Tel. +39 059 256090 Fax. +39 059 260883
Codice R.E.A. 354046
Partita IVA E. Codice Fiscale: 03661810366
e-Mail: monditecinfo@mondialtech.net
Web: <http://www.mondialtech.net>

Vasto assortimento di Cuscinetti SKF - FAG

LK
CSC
MONDIAL

U serie 000



Tipo No.	Albero Diam. mm	Dimensioni -mm										Basic load rating kgf.		Peso (Kg)
		D	L	Bi	Be	r	n	k	w	a	ds	Dynamic Cor	Static Cor	
U000	10	26	17.5	11	8	0.5	4	8.5	17	3.5	M4*0.7	470	200	0.03
U001	12	28	17.5	11	8	0.5	4	8.5	19	3.5	M4*0.7	520	245	0.04
U002	15	32	18.5	12	9	0.5	4.5	8.5	22	3.5	M4*0.7	570	290	0.05
U003	17	35	20.5	13.5	10	0.5	5	9.5	25	3.5	M4*0.7	610	335	0.07
U004	20	42	24.5	16.5	12	1	6	11	30	5	M5*0.8	955	515	0.11
U005	25	47	25.5	17.5	12	1	6	12	36	5	M5*0.8	1030	595	0.15
U006	30	55	26.5	18.5	13	1.5	6.5	12	42	5	M5*0.8	1350	845	0.21



MONDIALTECH
Forniture Industriali

Via Raimondo Dalla Costa 240/b
41100 MODENA - ITALY
Tel. +39 059 256090 Fax: +39 059 260883
Codice R.E.A. 354046
Partita IVA E Codice Fiscale: 03661810366
e-Mail: mondialtech@mondialtech.net
Web: <http://www.mondialtech.net>

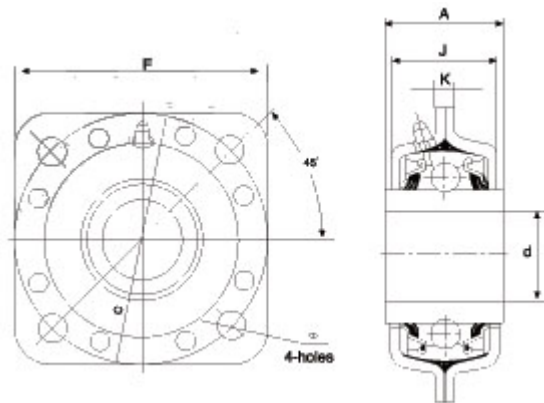
Vasto assortimento di Cuscinetti SKF - FAG

LK
Supporti di Qualità

CSC
Cuscinetti Normalizzati

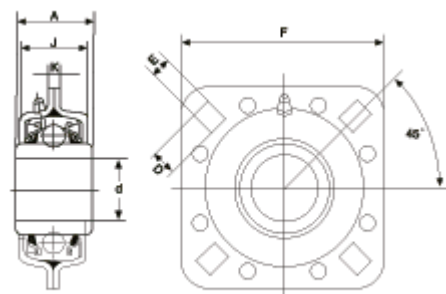
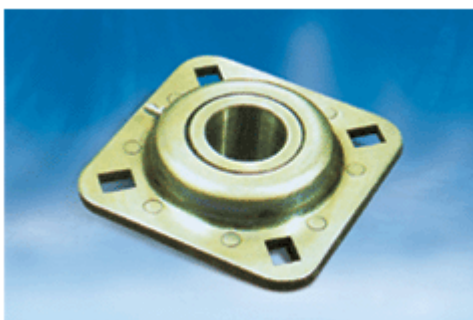
MONDIAL
Cuscinetti a Balli

ST 491A – ST 740 (Supporti Agricoli)



Tipo No.	d mm	D1 mm	A mm	C mm	F mm	J mm	K mm
ST491A	45.00	13.5	42.70	127.0	127.00	41.70	6.75
ST740	55.57	13.5	55.60	139.7	139.7	45.0	7.00

ST 491B (Supporti Agricoli)



Tipo No.	d	D	E	A	C	F	J	K
ST491B	38.70	16.70	13.50	2.86	127.00	127.00	41.70	6.75