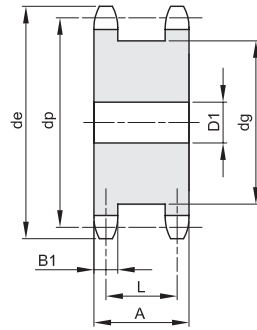
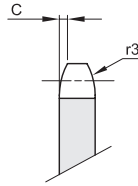


# CORONE DOPPIE PER DUE CATENE SEMPLICI - DIN 8187 - ISO 606

## DOUBLE SIMPLE SPROCKETS - DIN 8187 - ISO 606

**3/8" x 7/32"**

**9,525 x 5,72 mm**  
**Rullo 6,35 mm**  
**06B - 1**



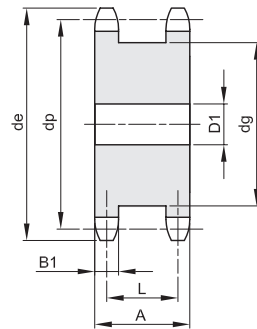
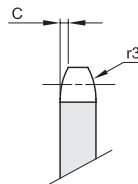
|     |   |    |
|-----|---|----|
| B1  | C | r3 |
| 5,3 | 1 | 10 |

Materiale C 43 UNI 7847

| Z  | de   | dp    | D1 | dg | A  | L    | Kg.  |
|----|------|-------|----|----|----|------|------|
| 13 | 43,5 | 39,80 | 10 | 29 | 23 | 17,8 | 0,14 |
| 14 | 46,5 | 42,80 | 10 | 32 | 23 | 17,8 | 0,17 |
| 15 | 49,5 | 45,81 | 10 | 35 | 23 | 17,8 | 0,20 |
| 16 | 52,5 | 48,82 | 12 | 38 | 23 | 17,8 | 0,23 |
| 17 | 55,5 | 51,83 | 12 | 41 | 23 | 17,8 | 0,26 |
| 18 | 58,6 | 54,85 | 12 | 44 | 23 | 17,8 | 0,30 |
| 19 | 61,6 | 57,87 | 12 | 47 | 23 | 17,8 | 0,34 |
| 20 | 64,6 | 60,89 | 15 | 50 | 23 | 17,8 | 0,38 |
| 21 | 67,6 | 63,91 | 15 | 53 | 23 | 17,8 | 0,43 |
| 23 | 73,7 | 69,95 | 15 | 60 | 23 | 17,8 | 0,54 |
| 25 | 79,7 | 76,00 | 15 | 66 | 23 | 17,8 | 0,65 |

**1/2" x 5/16"**

**12,7 x 7,75 mm**  
**Rullo 8,51 mm**  
**08B - 1**



|     |     |    |
|-----|-----|----|
| B1  | C   | r3 |
| 7,2 | 1,3 | 13 |

Materiale C 43 UNI 7847

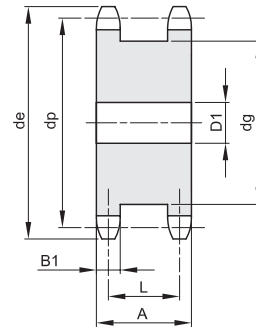
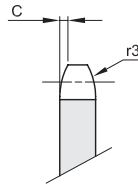
| Z  | de    | dp     | D1 | dg | A  | L  | Kg.  |
|----|-------|--------|----|----|----|----|------|
| 12 | 53,9  | 49,07  | 15 | 36 | 30 | 23 | 0,27 |
| 13 | 57,9  | 53,06  | 15 | 40 | 30 | 23 | 0,33 |
| 14 | 61,9  | 57,07  | 15 | 44 | 30 | 23 | 0,40 |
| 15 | 65,9  | 61,09  | 15 | 48 | 30 | 23 | 0,47 |
| 16 | 69,9  | 65,10  | 15 | 52 | 30 | 23 | 0,55 |
| 17 | 74,0  | 69,11  | 15 | 56 | 30 | 23 | 0,64 |
| 18 | 78,0  | 73,14  | 15 | 60 | 30 | 23 | 0,73 |
| 19 | 82,0  | 77,16  | 15 | 64 | 30 | 23 | 0,84 |
| 20 | 86,0  | 81,19  | 15 | 68 | 30 | 23 | 0,93 |
| 21 | 90,1  | 85,22  | 15 | 72 | 30 | 23 | 1,03 |
| 23 | 98,1  | 93,27  | 15 | 80 | 30 | 23 | 1,28 |
| 25 | 106,2 | 101,33 | 15 | 88 | 30 | 23 | 1,54 |

# CORONE DOPPIE PER DUE CATENE SEMPLICI - DIN 8187 - ISO 606

## DOUBLE SIMPLE SPROCKETS - DIN 8187 - ISO 606

**5/8" x 3/8"**

**15,875 x 9,65 mm**  
**Rullo 10,16 mm**  
**10B - 1**



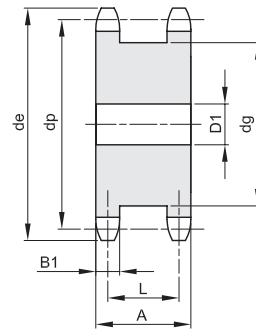
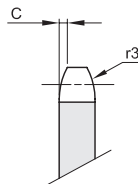
|     |     |    |
|-----|-----|----|
| B1  | C   | r3 |
| 9,1 | 1,6 | 16 |

Materiale C 43 UNI 7847

| Z  | de    | dp     | D1 | dg  | A  | L    | Kg.  |
|----|-------|--------|----|-----|----|------|------|
| 12 | 68,2  | 61,34  | 15 | 45  | 34 | 25,2 | 0,51 |
| 13 | 73,2  | 66,32  | 15 | 50  | 34 | 25,2 | 0,62 |
| 14 | 78,2  | 71,34  | 15 | 55  | 34 | 25,2 | 0,74 |
| 15 | 83,2  | 76,36  | 15 | 60  | 34 | 25,2 | 0,87 |
| 16 | 88,3  | 81,37  | 15 | 65  | 34 | 25,2 | 1,02 |
| 17 | 93,3  | 86,39  | 15 | 70  | 34 | 25,2 | 1,17 |
| 18 | 98,3  | 91,42  | 15 | 75  | 34 | 25,2 | 1,34 |
| 19 | 103,3 | 96,45  | 20 | 80  | 34 | 25,2 | 1,49 |
| 20 | 108,4 | 101,49 | 20 | 85  | 34 | 25,2 | 1,68 |
| 21 | 113,4 | 106,52 | 20 | 90  | 34 | 25,2 | 1,88 |
| 23 | 123,5 | 116,58 | 20 | 100 | 34 | 25,2 | 2,30 |
| 25 | 133,6 | 126,66 | 20 | 110 | 34 | 25,2 | 2,77 |

**3/4" x 7/16"**

**19,05 x 11,68 mm**  
**Rullo 12,07 mm**  
**12B - 1**



|      |   |    |
|------|---|----|
| B1   | C | r3 |
| 11,1 | 2 | 19 |

Materiale C 43 UNI 7847

| Z  | de    | dp     | D1 | dg  | A  | L    | Kg.  |
|----|-------|--------|----|-----|----|------|------|
| 12 | 81,8  | 73,60  | 20 | 53  | 44 | 33,4 | 0,91 |
| 13 | 87,8  | 79,59  | 20 | 59  | 44 | 33,4 | 1,12 |
| 14 | 93,8  | 85,61  | 20 | 65  | 44 | 33,4 | 1,33 |
| 15 | 99,8  | 91,63  | 20 | 71  | 44 | 33,4 | 1,57 |
| 16 | 105,8 | 97,65  | 20 | 77  | 44 | 33,4 | 1,84 |
| 17 | 111,9 | 103,67 | 20 | 83  | 44 | 33,4 | 2,12 |
| 18 | 117,9 | 109,71 | 20 | 89  | 44 | 33,4 | 2,42 |
| 19 | 123,9 | 115,75 | 20 | 95  | 44 | 33,4 | 2,75 |
| 20 | 130,0 | 121,78 | 20 | 101 | 44 | 33,4 | 3,09 |
| 21 | 136,0 | 127,82 | 25 | 107 | 44 | 33,4 | 3,42 |
| 23 | 148,1 | 139,90 | 25 | 119 | 44 | 33,4 | 4,21 |
| 25 | 160,2 | 152,00 | 25 | 131 | 44 | 33,4 | 5,07 |

# CORONE DOPPIE PER DUE CATENE SEMPLICI - DIN 8187 - ISO 606

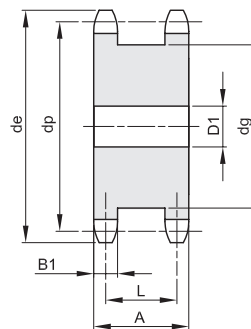
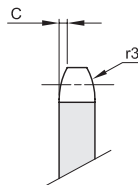
## DOUBLE SIMPLE SPROCKETS - DIN 8187 - ISO 606

**1" x 17,02 mm**

**25,4 x 17,02 mm**

**Rullo 15,88 mm**

**16B - 1**



|      |     |    |
|------|-----|----|
| B1   | C   | r3 |
| 16,2 | 2,5 | 26 |

Materiale C 43 UNI 7847

| Z  | de    | dp     | D1 | dg  | A  | L    | Kg.  |
|----|-------|--------|----|-----|----|------|------|
| 12 | 109,7 | 98,14  | 20 | 72  | 68 | 52,5 | 2,58 |
| 13 | 117,7 | 106,12 | 20 | 80  | 68 | 52,5 | 3,14 |
| 14 | 125,7 | 114,15 | 20 | 88  | 68 | 52,5 | 3,76 |
| 15 | 133,7 | 122,17 | 20 | 96  | 68 | 52,5 | 4,44 |
| 16 | 141,8 | 130,20 | 25 | 104 | 68 | 52,5 | 5,09 |
| 17 | 149,8 | 138,22 | 25 | 112 | 68 | 52,5 | 5,87 |
| 18 | 157,8 | 146,28 | 25 | 120 | 68 | 52,5 | 6,70 |
| 19 | 165,9 | 154,33 | 30 | 128 | 68 | 52,5 | 7,53 |
| 21 | 182,0 | 170,43 | 30 | 144 | 68 | 52,5 | 9,48 |

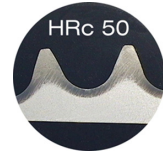
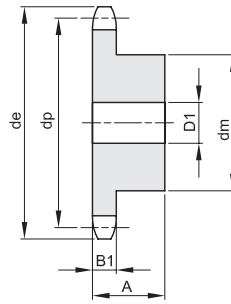
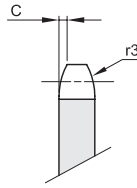




**PIGNONI SEMPLICI TEMPERATI AD INDUZIONE PER CATENE A RULLI - DIN 8187 - ISO 606**  
**SIMPLEX SPROCKETS WITH HARDENED TEETH FOR ROLLER CHAINS - DIN 8187 - ISO 606**

**1" x 17,02 mm**  
**25,4 x 17,02 mm**  
**Rullo 15,88 mm**  
**16B - 1**

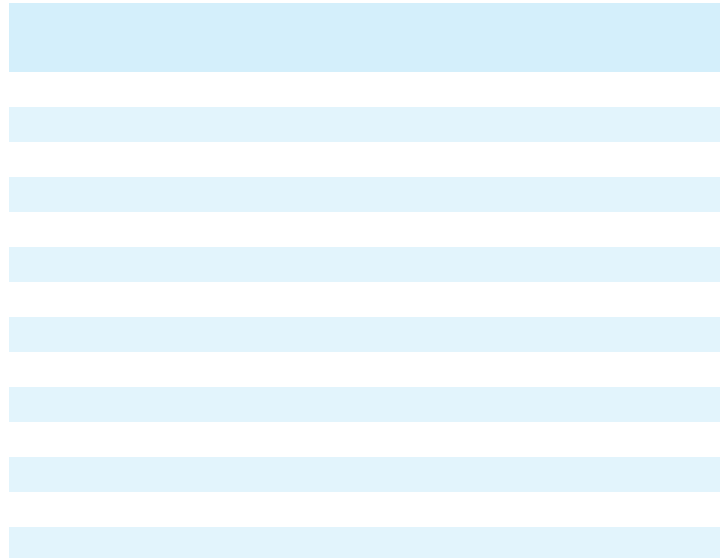
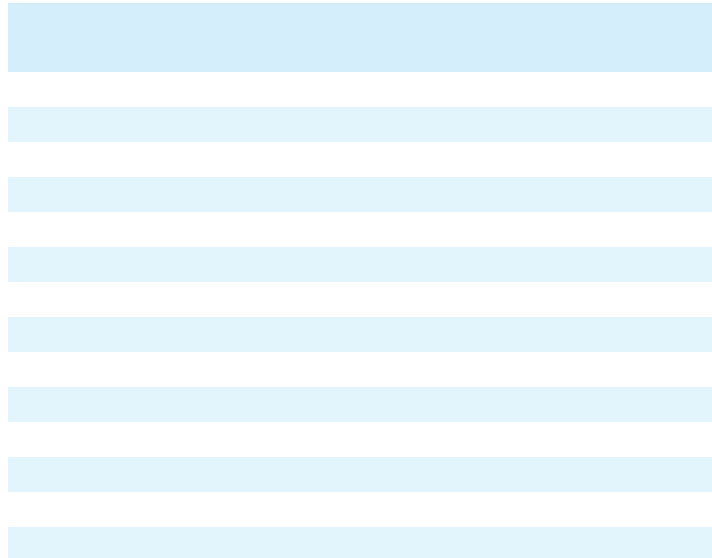
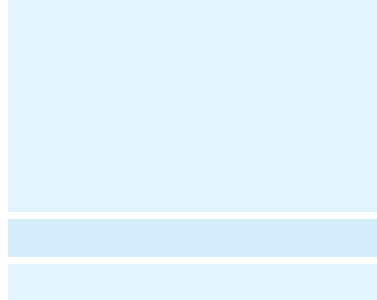
|      |     |    |
|------|-----|----|
| B1   | C   | r3 |
| 16,2 | 2,5 | 26 |



**Materiale C 43 UNI 7847**

| Z  | de    | dp     | dm  | D1 | A  | Kg.  |
|----|-------|--------|-----|----|----|------|
| 12 | 109,7 | 98,14  | 69  | 16 | 40 | 1,43 |
| 13 | 117,7 | 106,12 | 78  | 16 | 40 | 1,77 |
| 14 | 125,7 | 114,15 | 84  | 16 | 40 | 2,08 |
| 15 | 133,7 | 122,17 | 92  | 16 | 40 | 2,46 |
| 16 | 141,8 | 130,20 | 100 | 20 | 45 | 3,14 |
| 17 | 149,8 | 138,22 | 100 | 20 | 45 | 3,34 |
| 18 | 157,8 | 146,28 | 100 | 20 | 45 | 3,56 |
| 19 | 165,9 | 154,33 | 100 | 20 | 45 | 3,78 |
| 20 | 173,9 | 162,38 | 100 | 20 | 45 | 4,03 |
| 21 | 182,0 | 170,43 | 110 | 20 | 50 | 5,01 |
| 22 | 190,1 | 178,48 | 110 | 20 | 50 | 5,28 |
| 23 | 198,1 | 186,53 | 110 | 20 | 50 | 5,56 |
| 24 | 206,1 | 194,59 | 110 | 20 | 50 | 5,86 |
| 25 | 214,2 | 202,65 | 110 | 20 | 50 | 6,16 |
| 30 | 254,6 | 243,00 | 120 | 20 | 50 | 8,38 |

| Z | de | dp | dm | D1 | A | Kg. |
|---|----|----|----|----|---|-----|
|   |    |    |    |    |   |     |
|   |    |    |    |    |   |     |
|   |    |    |    |    |   |     |
|   |    |    |    |    |   |     |
|   |    |    |    |    |   |     |
|   |    |    |    |    |   |     |
|   |    |    |    |    |   |     |
|   |    |    |    |    |   |     |
|   |    |    |    |    |   |     |
|   |    |    |    |    |   |     |
|   |    |    |    |    |   |     |
|   |    |    |    |    |   |     |
|   |    |    |    |    |   |     |
|   |    |    |    |    |   |     |
|   |    |    |    |    |   |     |
|   |    |    |    |    |   |     |
|   |    |    |    |    |   |     |



# PIGNONI IN GHISA PER CATENE A RULLI - DIN 8187 - ISO 606

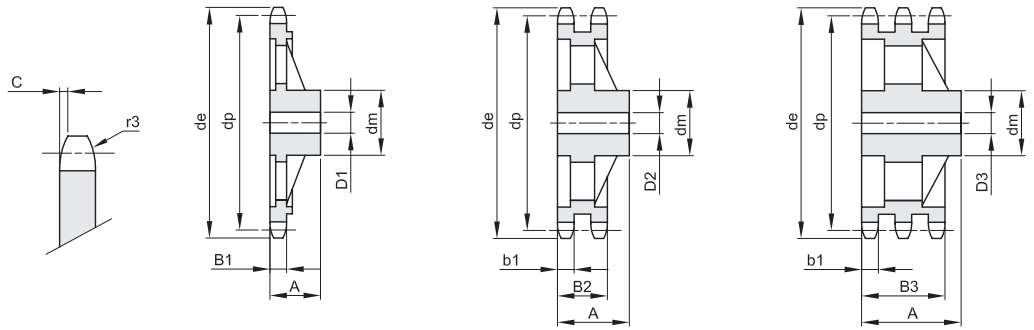
## CAST IRON SPROCKETS FOR ROLLER CHAINS - DIN 8187 - ISO 606

**3/8" x 7/32"**

**9,525 x 5,72 mm**  
**Rullo 6,35 mm**  
**06B - 1 - 2 - 3**

|     |      |      |     |   |    |
|-----|------|------|-----|---|----|
| B1  | B2   | B3   | b1  | C | r3 |
| 5,3 | 15,4 | 25,6 | 5,2 | 1 | 10 |

Materiale Ghisa G 22



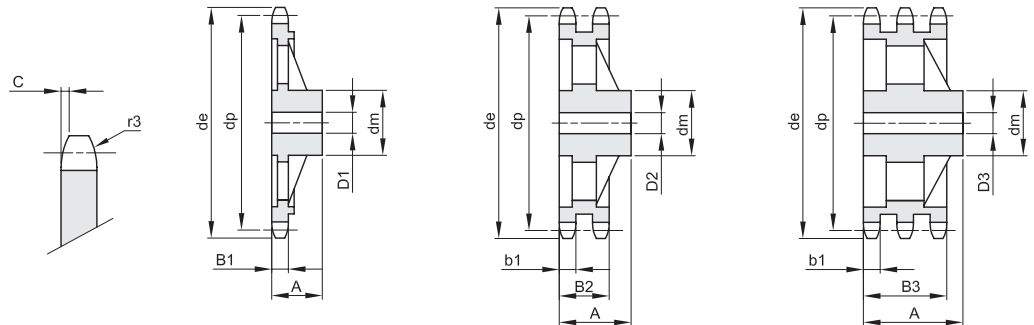
| Z   | de    | dp     | semplici |    |    |      | doppi |    |    |      | tripli |    |    |      |
|-----|-------|--------|----------|----|----|------|-------|----|----|------|--------|----|----|------|
|     |       |        | dm       | D1 | A  | Kg.  | dm    | D2 | A  | Kg.  | dm     | D3 | A  | Kg.  |
| 38  | 119,0 | 115,34 | 70       | 20 | 32 | 1,12 |       |    |    |      |        |    |    |      |
| 45  | 141,1 | 136,54 | 70       | 20 | 32 | 1,30 | 80    | 20 | 40 | 2,06 | 90     | 24 | 56 | 3,56 |
| 57  | 177,5 | 172,91 | 70       | 20 | 32 | 1,55 | 80    | 20 | 40 | 2,30 | 90     | 24 | 56 | 3,97 |
| 76  | 235,1 | 230,49 | 70       | 20 | 35 | 2,00 | 80    | 20 | 40 | 3,02 | 100    | 24 | 56 | 4,52 |
| 95  | 292,7 | 288,08 | 80       | 20 | 40 | 3,83 | 90    | 20 | 45 | 4,68 | 100    | 24 | 56 | 6,12 |
| 114 | 350,3 | 345,68 | 80       | 20 | 40 | 4,05 | 95    | 20 | 45 | 5,90 | 100    | 24 | 56 | 7,45 |

**1/2" x 5/16"**

**12,7 x 7,75 mm**  
**Rullo 8,51 mm**  
**08B - 1 - 2 - 3**

|     |    |      |    |     |    |
|-----|----|------|----|-----|----|
| B1  | B2 | B3   | b1 | C   | r3 |
| 7,2 | 21 | 34,9 | 7  | 1,3 | 13 |

Materiale Ghisa G 22



| Z   | de    | dp     | semplici |    |    |      | doppi |    |    |       | tripli |    |    |       |
|-----|-------|--------|----------|----|----|------|-------|----|----|-------|--------|----|----|-------|
|     |       |        | dm       | D1 | A  | Kg.  | dm    | D2 | A  | Kg.   | dm     | D3 | A  | Kg.   |
| 38  | 158,6 | 153,80 | 70       | 24 | 40 | 1,56 | 90    | 24 | 50 | 3,15  | 100    | 24 | 60 | 4,45  |
| 45  | 188,6 | 182,07 | 70       | 24 | 40 | 1,95 | 90    | 24 | 50 | 3,56  | 100    | 24 | 60 | 5,85  |
| 57  | 237,1 | 230,54 | 70       | 24 | 40 | 2,46 | 90    | 24 | 50 | 4,00  | 100    | 24 | 60 | 6,28  |
| 76  | 313,9 | 307,33 | 80       | 24 | 40 | 4,20 | 100   | 24 | 56 | 6,35  | 100    | 24 | 60 | 8,60  |
| 95  | 390,7 | 384,11 | 80       | 24 | 45 | 5,45 | 100   | 24 | 56 | 8,00  | 120    | 24 | 67 | 11,90 |
| 114 | 467,4 | 460,90 | 80       | 24 | 45 | 8,35 | 100   | 24 | 63 | 11,90 |        |    |    |       |

# PIGNONI IN GHISA PER CATENE A RULLI - DIN 8187 - ISO 606

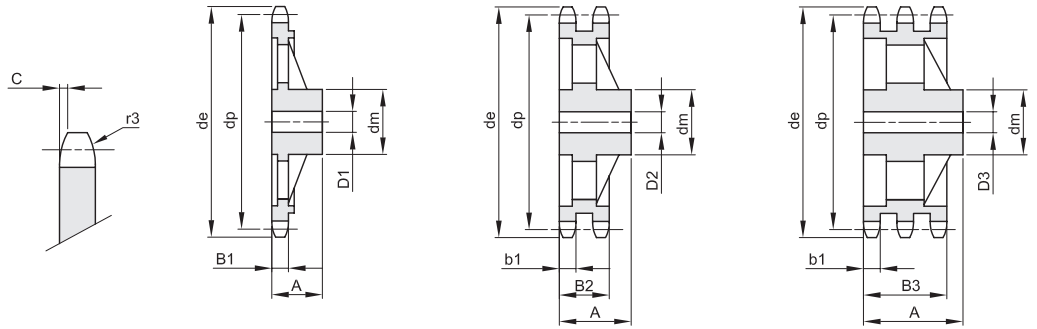
## CAST IRON SPROCKETS FOR ROLLER CHAINS - DIN 8187 - ISO 606

**5/8" x 3/8"**

**15,875 x 9,65 mm**  
**Rullo 10,16 mm**  
**10B - 1 - 2 - 3**

|     |      |      |    |     |    |
|-----|------|------|----|-----|----|
| B1  | B2   | B3   | b1 | C   | r3 |
| 9,1 | 25,5 | 42,1 | 9  | 1,6 | 16 |

Materiale Ghisa G 22



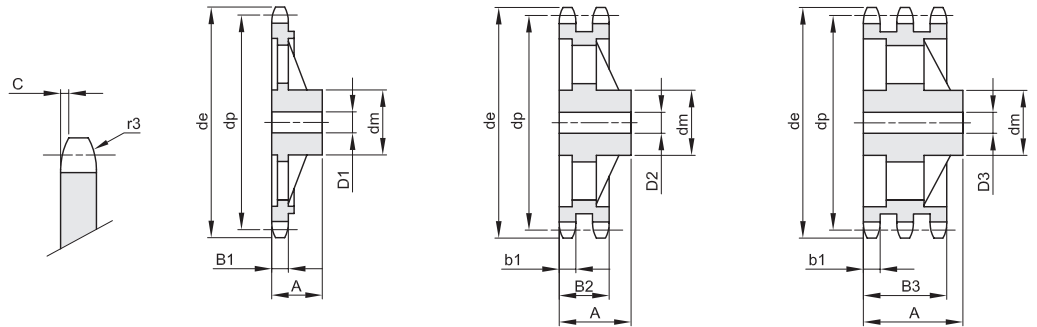
| Z   | de    | dp     | semplici |    |    |       | doppi |    |    |       | tripli |    |    |       |
|-----|-------|--------|----------|----|----|-------|-------|----|----|-------|--------|----|----|-------|
|     |       |        | dm       | D1 | A  | Kg.   | dm    | D2 | A  | Kg.   | dm     | D3 | A  | Kg.   |
| 38  | 199,1 | 192,24 | 80       | 24 | 40 | 2,32  | 100   | 30 | 50 | 4,56  | 100    | 32 | 60 | 6,50  |
| 45  | 236,0 | 227,58 | 80       | 24 | 40 | 2,88  | 100   | 30 | 50 | 4,93  | 100    | 32 | 60 | 7,04  |
| 57  | 296,6 | 288,18 | 90       | 24 | 45 | 4,30  | 100   | 30 | 56 | 6,50  | 100    | 32 | 63 | 8,00  |
| 76  | 392,5 | 384,16 | 90       | 24 | 50 | 7,00  | 100   | 30 | 63 | 9,10  | 110    | 35 | 67 | 12,00 |
| 95  | 488,5 | 480,14 | 100      | 24 | 56 | 10,65 | 110   | 30 | 63 | 12,60 | 125    | 35 | 70 | 19,40 |
| 114 | 584,5 | 576,13 | 100      | 24 | 56 | 14,50 | 125   | 30 | 70 | 17,80 | 125    | 35 | 80 | 24,00 |

**3/4" x 7/16"**

**19,05 x 11,68 mm**  
**Rullo 12,07 mm**  
**12B - 1 - 2 - 3**

|      |      |      |      |   |    |
|------|------|------|------|---|----|
| B1   | B2   | B3   | b1   | C | r3 |
| 11,1 | 30,3 | 49,8 | 10,8 | 2 | 19 |

Materiale Ghisa G 22



| Z   | de    | dp     | semplici |    |    |       | doppi |    |    |       | tripli |    |    |       |
|-----|-------|--------|----------|----|----|-------|-------|----|----|-------|--------|----|----|-------|
|     |       |        | dm       | D1 | A  | Kg.   | dm    | D2 | A  | Kg.   | dm     | D3 | A  | Kg.   |
| 38  | 238,9 | 230,69 | 100      | 24 | 56 | 4,75  | 110   | 25 | 63 | 7,50  | 115    | 30 | 70 | 10,00 |
| 45  | 283,2 | 273,10 | 100      | 24 | 56 | 5,90  | 110   | 30 | 63 | 8,30  | 140    | 30 | 70 | 13,30 |
| 57  | 355,9 | 345,81 | 100      | 30 | 56 | 6,45  | 120   | 30 | 63 | 10,30 | 140    | 40 | 70 | 15,25 |
| 76  | 471,1 | 460,99 | 100      | 30 | 56 | 12,30 | 135   | 30 | 63 | 15,20 | 160    | 40 | 75 | 27,20 |
| 95  | 586,2 | 576,17 | 100      | 30 | 65 | 15,40 | 135   | 30 | 70 | 20,20 | 170    | 40 | 82 | 36,40 |
| 114 | 701,4 | 691,36 | 100      | 30 | 65 | 24,80 | 135   | 45 | 70 | 30,40 | 170    | 50 | 82 | 41,10 |



# PIGNONI IN GHISA PER CATENE A RULLI - DIN 8187 - ISO 606

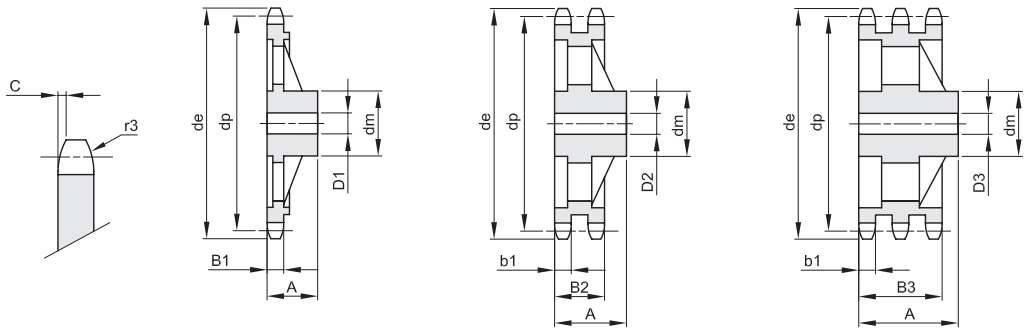
## CAST IRON SPROCKETS FOR ROLLER CHAINS - DIN 8187 - ISO 606

**1" x 17,02 mm**

**25,4 x 17,02 mm**  
**Rullo 15,88 mm**  
**16B - 1 - 2 - 3**

|      |      |      |      |     |    |
|------|------|------|------|-----|----|
| B1   | B2   | B3   | b1   | C   | r3 |
| 16,2 | 47,7 | 79,6 | 15,8 | 2,5 | 26 |

Materiale Ghisa G 22



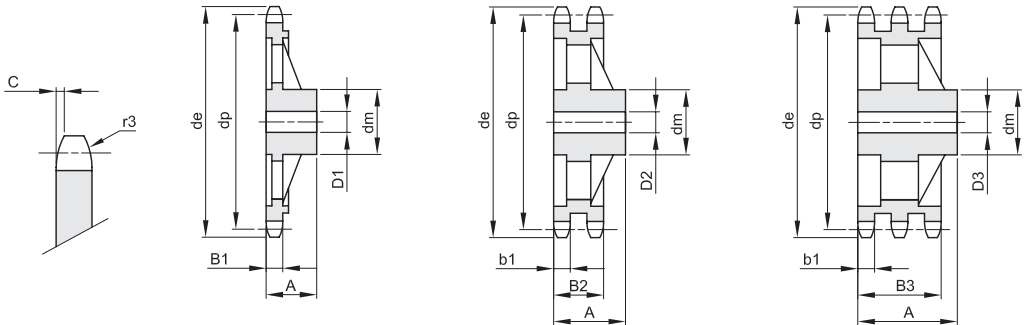
| Z   | de    | dp     | semplici |    |    |       | doppi |    |    |       | tripli |    |     |       |
|-----|-------|--------|----------|----|----|-------|-------|----|----|-------|--------|----|-----|-------|
|     |       |        | dm       | D1 | A  | Kg.   | dm    | D2 | A  | Kg.   | dm     | D3 | A   | Kg.   |
| 38  | 319,2 | 307,59 | 110      | 30 | 65 | 8,26  | 140   | 40 | 75 | 16,45 | 160    | 45 | 100 | 25,40 |
| 45  | 377,9 | 364,12 | 125      | 30 | 70 | 10,75 | 150   | 40 | 75 | 19,20 | 160    | 45 | 100 | 33,60 |
| 57  | 474,9 | 461,07 | 125      | 35 | 70 | 12,90 | 170   | 40 | 90 | 29,50 | 180    | 45 | 100 | 44,70 |
| 76  | 628,4 | 614,65 | 140      | 35 | 80 | 24,70 | 175   | 40 | 95 | 46,30 | 200    | 45 | 110 | 63,10 |
| 95  | 782,0 | 768,22 | 140      | 40 | 80 | 32,00 | 175   | 45 | 95 | 53,00 | 200    | 50 | 110 | 77,00 |
| 114 | 935,6 | 921,81 | 150      | 40 | 80 | 45,50 | 180   | 45 | 95 | 74,00 | 200    | 50 | 115 | 97,00 |

**1"1/4 x 3/4"**

**31,75 x 19,56 mm**  
**Rullo 19,05 mm**  
**20B - 1 - 2 - 3**

|      |      |    |      |     |    |
|------|------|----|------|-----|----|
| B1   | B2   | B3 | b1   | C   | r3 |
| 18,5 | 54,6 | 91 | 18,2 | 3,5 | 32 |

Materiale Ghisa G 22



| Z  | de    | dp     | semplici |    |    |       | doppi |    |     |       | tripli |    |     |        |
|----|-------|--------|----------|----|----|-------|-------|----|-----|-------|--------|----|-----|--------|
|    |       |        | dm       | D1 | A  | Kg.   | dm    | D2 | A   | Kg.   | dm     | D3 | A   | Kg.    |
| 38 | 399,4 | 384,49 | 125      | 35 | 70 | 12,30 | 140   | 45 | 90  | 24,80 | 180    | 50 | 115 | 52,00  |
| 57 | 592,3 | 576,36 | 135      | 40 | 80 | 25,60 | 170   | 50 | 100 | 43,00 | 180    | 50 | 130 | 71,50  |
| 76 | 784,3 | 768,32 | 140      | 50 | 90 | 29,10 | 180   | 50 | 110 | 62,50 | 200    | 50 | 140 | 115,00 |

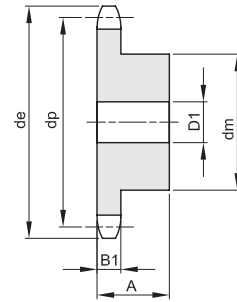
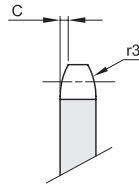


# PIGNONI SEMPLICI PER CATENE A RULLI IN ACCIAIO INOX - DIN 8187 - ISO 606

## SIMPLEX SPROCKETS IN STAINLESS STEEL FOR ROLLER CHAINS - DIN 8187 - ISO 606

### 3/8" x 7/32"

9,525 x 5,72 mm  
Rullo 6,35 mm  
06B - 1



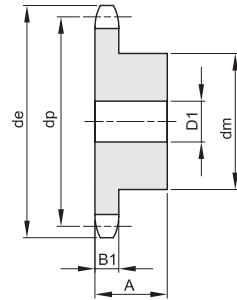
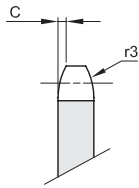
| B1  | C | r3 |
|-----|---|----|
| 5,3 | 1 | 10 |

Materiale INOX AISI 304 L

| Z  | de   | dp    | dm | D1 | A  | Kg.  | Z  | de   | dp    | dm | D1 | A  | Kg.  |
|----|------|-------|----|----|----|------|----|------|-------|----|----|----|------|
| 13 | 43,5 | 39,80 | 28 | 8  | 25 | 0,13 | 20 | 64,6 | 60,89 | 46 | 10 | 28 | 0,39 |
| 14 | 46,5 | 42,80 | 31 | 8  | 25 | 0,16 | 21 | 67,6 | 63,91 | 48 | 12 | 28 | 0,42 |
| 15 | 49,5 | 45,81 | 34 | 8  | 25 | 0,18 | 23 | 73,7 | 69,95 | 52 | 12 | 28 | 0,50 |
| 16 | 52,5 | 48,82 | 37 | 10 | 28 | 0,24 | 25 | 79,7 | 76,00 | 57 | 12 | 28 | 0,60 |
| 17 | 55,5 | 51,83 | 40 | 10 | 28 | 0,28 | 30 | 94,8 | 91,12 | 60 | 12 | 30 | 0,72 |
| 18 | 58,6 | 54,85 | 43 | 10 | 28 | 0,33 |    |      |       |    |    |    |      |
| 19 | 61,6 | 57,87 | 45 | 10 | 28 | 0,36 |    |      |       |    |    |    |      |

### 1/2" x 5/16"

12,7 x 7,75 mm  
Rullo 8,51 mm  
08B - 1



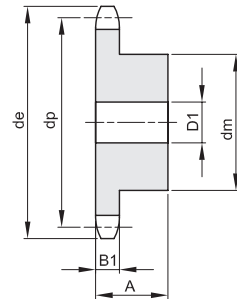
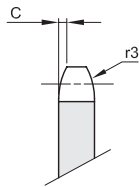
| B1  | C   | r3 |
|-----|-----|----|
| 7,2 | 1,3 | 13 |

Materiale INOX AISI 304 L

| Z  | de   | dp    | dm | D1 | A  | Kg.  | Z  | de    | dp     | dm | D1 | A  | Kg.  |
|----|------|-------|----|----|----|------|----|-------|--------|----|----|----|------|
| 12 | 53,9 | 49,07 | 33 | 10 | 28 | 0,21 | 19 | 82,0  | 77,16  | 60 | 12 | 28 | 0,67 |
| 13 | 57,9 | 53,06 | 37 | 10 | 28 | 0,26 | 20 | 86,0  | 81,19  | 64 | 12 | 28 | 0,76 |
| 14 | 61,9 | 57,07 | 41 | 10 | 28 | 0,32 | 21 | 90,1  | 85,22  | 68 | 14 | 28 | 0,85 |
| 15 | 65,9 | 61,09 | 45 | 10 | 28 | 0,38 | 23 | 98,1  | 93,27  | 70 | 14 | 28 | 0,94 |
| 16 | 69,9 | 65,10 | 50 | 12 | 28 | 0,46 | 25 | 106,2 | 101,33 | 70 | 14 | 28 | 1,01 |
| 17 | 74,0 | 69,11 | 52 | 12 | 28 | 0,51 | 30 | 126,3 | 121,50 | 80 | 16 | 30 | 1,46 |
| 18 | 78,0 | 73,14 | 56 | 12 | 28 | 0,59 |    |       |        |    |    |    |      |

### 5/8" x 3/8"

15,875 x 9,65 mm  
Rullo 10,16 mm  
10B - 1



| B1  | C   | r3 |
|-----|-----|----|
| 9,1 | 1,6 | 16 |

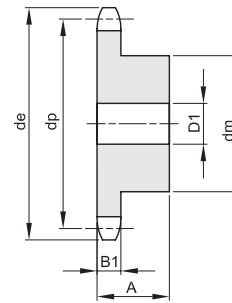
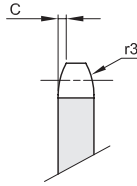
Materiale INOX AISI 304 L

| Z  | de    | dp    | dm | D1 | A  | Kg.  | Z  | de    | dp     | dm | D1 | A  | Kg.  |
|----|-------|-------|----|----|----|------|----|-------|--------|----|----|----|------|
| 13 | 73,2  | 66,32 | 47 | 12 | 30 | 0,46 | 20 | 108,4 | 101,49 | 75 | 14 | 30 | 1,21 |
| 14 | 78,2  | 71,34 | 52 | 12 | 30 | 0,56 | 21 | 113,4 | 106,52 | 75 | 16 | 30 | 1,35 |
| 15 | 83,2  | 76,36 | 57 | 12 | 30 | 0,67 | 23 | 123,5 | 116,58 | 80 | 16 | 30 | 1,47 |
| 16 | 88,3  | 81,37 | 60 | 12 | 30 | 0,76 | 25 | 133,6 | 126,66 | 80 | 16 | 30 | 1,60 |
| 17 | 93,3  | 86,39 | 60 | 12 | 30 | 0,88 | 30 | 158,8 | 151,87 | 90 | 20 | 35 | 2,41 |
| 18 | 98,3  | 91,42 | 70 | 14 | 30 | 1,01 |    |       |        |    |    |    |      |
| 19 | 103,3 | 96,45 | 70 | 14 | 30 | 1,15 |    |       |        |    |    |    |      |

**PIGNONI SEMPLICI PER CATENE A RULLI IN ACCIAIO INOX - DIN 8187 - ISO 606**  
**SIMPLEX SPROCKETS IN STAINLESS STEEL FOR ROLLER CHAINS - DIN 8187 - ISO 606**

**3/4" x 7/16"**

**19,05 x 11,68 mm**  
**Rullo 12,07 mm**  
**12B - 1 - 2 - 3**



|      |   |    |
|------|---|----|
| B1   | C | r3 |
| 11,1 | 2 | 19 |

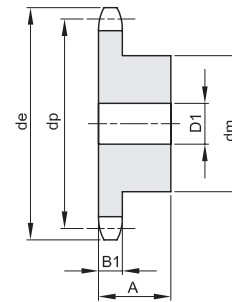
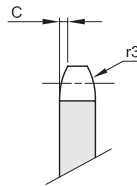
**Materiale INOX AISI 304 L**

| Z  | de    | dp     | dm | D1 | A  | Kg.  |
|----|-------|--------|----|----|----|------|
| 13 | 87,8  | 79,59  | 58 | 16 | 35 | 0,80 |
| 14 | 93,8  | 85,61  | 64 | 16 | 35 | 0,97 |
| 15 | 99,8  | 91,63  | 70 | 16 | 35 | 1,16 |
| 16 | 105,8 | 97,65  | 75 | 16 | 35 | 1,34 |
| 17 | 111,9 | 103,67 | 80 | 16 | 35 | 1,53 |
| 18 | 117,9 | 109,71 | 80 | 16 | 35 | 1,62 |
| 19 | 123,9 | 115,75 | 80 | 16 | 35 | 1,70 |

| Z  | de    | dp     | dm | D1 | A  | Kg.  |
|----|-------|--------|----|----|----|------|
| 20 | 130,0 | 121,78 | 80 | 16 | 35 | 1,80 |
| 21 | 136,0 | 127,82 | 90 | 20 | 40 | 2,35 |
| 23 | 148,1 | 139,90 | 90 | 20 | 40 | 2,56 |
| 25 | 160,2 | 152,00 | 90 | 20 | 40 | 2,80 |

**1" x 17,02 mm**

**25,4 x 17,02 mm**  
**Rullo 15,88 mm**  
**16B - 1**

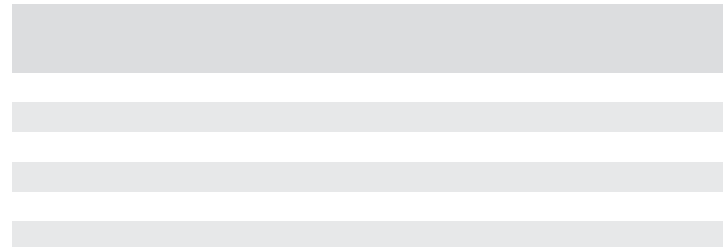
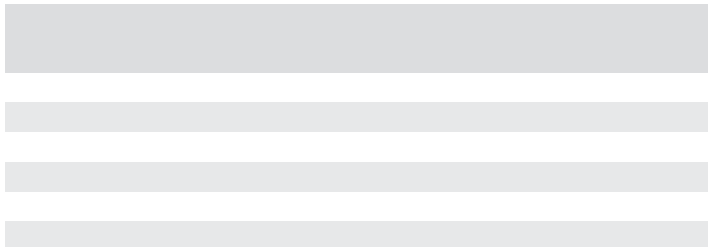
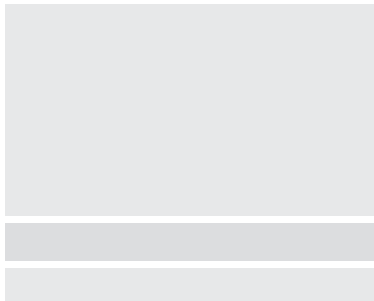


|      |     |    |
|------|-----|----|
| B1   | C   | r3 |
| 16,2 | 2,5 | 26 |

**Materiale INOX AISI 304 L**

| Z  | de    | dp     | dm  | D1 | A  | Kg.  |
|----|-------|--------|-----|----|----|------|
| 13 | 117,7 | 106,12 | 78  | 16 | 40 | 1,77 |
| 14 | 125,7 | 114,15 | 84  | 16 | 40 | 2,08 |
| 15 | 133,7 | 122,17 | 92  | 16 | 40 | 2,46 |
| 16 | 141,8 | 130,20 | 100 | 20 | 45 | 3,14 |
| 17 | 149,8 | 138,22 | 100 | 20 | 45 | 3,34 |
| 18 | 157,8 | 146,28 | 100 | 20 | 45 | 3,56 |
| 19 | 165,9 | 154,33 | 100 | 20 | 45 | 3,78 |

| Z  | de    | dp     | dm  | D1 | A  | Kg.  |
|----|-------|--------|-----|----|----|------|
| 20 | 173,9 | 162,38 | 100 | 20 | 45 | 4,03 |
| 21 | 182,0 | 170,43 | 110 | 20 | 50 | 5,14 |



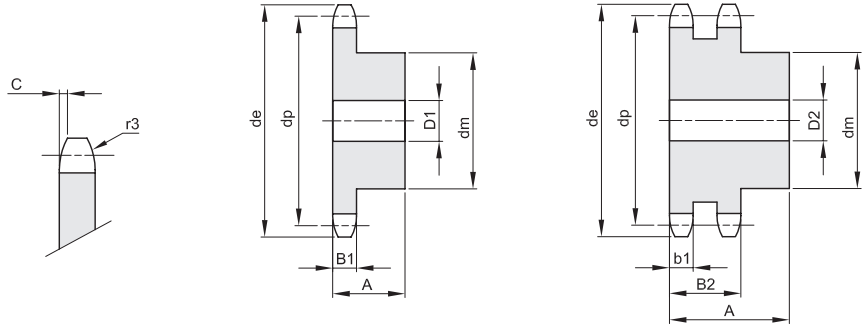


**PIGNONI PER CATENE A RULLI - DIN 8188 - ISO 606 - ANSI B 29.1**  
**SPROCKETS FOR ROLLER CHAINS - DIN 8188 - ISO 606 - ANSI B 29.1**

**ASA 35**

**9,525 x 4,77 mm**  
**Rullo 5,08 mm**  
**06C - 1 - 2**

|     |      |    |     |     |    |
|-----|------|----|-----|-----|----|
| B1  | B2   | B3 | b1  | C   | r3 |
| 4,3 | 14,3 |    | 4,1 | 1,2 | 10 |



Materiale C 43 UNI 7847

| Z  | de    | dp     | semplici |    |    |      | doppi |    |    |      | tripli |    |   |     |
|----|-------|--------|----------|----|----|------|-------|----|----|------|--------|----|---|-----|
|    |       |        | dm       | D1 | A  | Kg.  | dm    | D2 | A  | Kg.  | dm     | D3 | A | Kg. |
| 8  | 28,6  | 24,89  |          |    |    |      |       |    |    |      |        |    |   |     |
| 9  | 31,5  | 27,85  | 18       | 8  | 20 | 0,05 |       |    |    |      |        |    |   |     |
| 10 | 34,5  | 30,82  | 20       | 8  | 20 | 0,05 |       |    |    |      |        |    |   |     |
| 11 | 37,5  | 33,80  | 22       | 8  | 25 | 0,08 |       |    |    |      |        |    |   |     |
| 12 | 40,5  | 36,80  | 25       | 8  | 25 | 0,10 |       |    |    |      |        |    |   |     |
| 13 | 43,5  | 39,80  | 28       | 8  | 25 | 0,12 | 28    | 10 | 30 | 0,16 |        |    |   |     |
| 14 | 46,5  | 42,80  | 31       | 8  | 25 | 0,15 | 31    | 10 | 30 | 0,19 |        |    |   |     |
| 15 | 49,5  | 45,81  | 34       | 8  | 25 | 0,19 | 34    | 10 | 30 | 0,23 |        |    |   |     |
| 16 | 52,5  | 48,82  | 37       | 10 | 28 | 0,24 | 37    | 12 | 30 | 0,27 |        |    |   |     |
| 17 | 55,5  | 51,83  | 40       | 10 | 28 | 0,28 | 40    | 12 | 30 | 0,31 |        |    |   |     |
| 18 | 58,6  | 54,85  | 43       | 10 | 28 | 0,32 | 43    | 12 | 30 | 0,36 |        |    |   |     |
| 19 | 61,6  | 57,87  | 45       | 10 | 28 | 0,36 | 46    | 12 | 30 | 0,42 |        |    |   |     |
| 20 | 64,6  | 60,89  | 46       | 10 | 28 | 0,38 |       |    |    |      |        |    |   |     |
| 21 | 67,6  | 63,91  | 48       | 12 | 28 | 0,41 | 52    | 16 | 30 | 0,51 |        |    |   |     |
| 22 | 70,6  | 66,93  | 50       | 12 | 28 | 0,45 | 55    | 16 | 30 | 0,57 |        |    |   |     |
| 23 | 73,7  | 69,95  | 52       | 12 | 28 | 0,49 | 58    | 16 | 30 | 0,64 |        |    |   |     |
| 24 | 76,7  | 72,97  | 54       | 12 | 28 | 0,54 | 61    | 16 | 30 | 0,71 |        |    |   |     |
| 25 | 79,7  | 76,00  | 57       | 12 | 28 | 0,60 | 64    | 16 | 30 | 0,78 |        |    |   |     |
| 26 | 82,7  | 79,02  |          |    |    |      |       |    |    |      |        |    |   |     |
| 27 | 85,7  | 82,04  | 60       | 12 | 28 | 0,67 | 70    | 16 | 30 | 0,94 |        |    |   |     |
| 28 | 88,8  | 85,07  | 60       | 12 | 28 | 0,68 | 73    | 16 | 30 | 1,02 |        |    |   |     |
| 29 | 91,8  | 88,09  | 60       | 12 | 28 | 0,70 |       |    |    |      |        |    |   |     |
| 30 | 94,8  | 91,12  | 60       | 12 | 30 | 0,72 |       |    |    |      |        |    |   |     |
| 31 | 97,9  | 94,15  |          |    |    |      |       |    |    |      |        |    |   |     |
| 32 | 100,9 | 97,17  | 65       | 14 | 30 | 0,86 | 80    | 16 | 30 | 1,31 |        |    |   |     |
| 33 | 103,9 | 100,20 |          |    |    |      |       |    |    |      |        |    |   |     |
| 34 | 106,9 | 103,23 | 65       | 14 | 30 | 0,92 | 80    | 16 | 30 | 1,42 |        |    |   |     |
| 35 | 110,0 | 106,26 | 65       | 14 | 30 | 0,94 | 80    | 16 | 30 | 1,48 |        |    |   |     |
| 36 | 113,0 | 109,29 | 70       | 16 | 30 | 1,05 | 90    | 16 | 30 | 1,69 |        |    |   |     |
| 37 | 116,0 | 112,32 | 70       | 16 | 30 | 1,09 |       |    |    |      |        |    |   |     |
| 38 | 119,0 | 115,34 | 70       | 16 | 30 | 1,08 |       |    |    |      |        |    |   |     |
| 39 | 122,1 | 118,37 |          |    |    |      |       |    |    |      |        |    |   |     |
| 40 | 125,1 | 121,40 | 70       | 16 | 30 | 1,10 | 90    | 16 | 30 | 1,90 |        |    |   |     |

















# PIGNONI PER BUSSOLA CONICA - DIN 8187 - ISO 606

## SPROCKETS FOR TAPER BUSHES - DIN 8187 - ISO 606

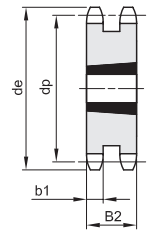
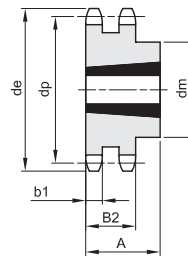
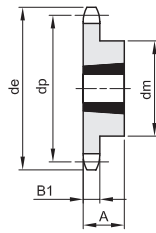
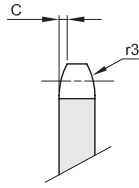
**3/8" x 7/32"**

**9,525 x 5,72 mm**

**Rullo 6,35 mm**

**06B - 1 - 2 - 3**

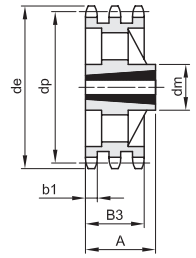
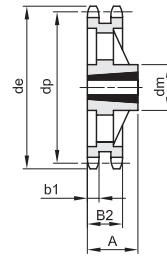
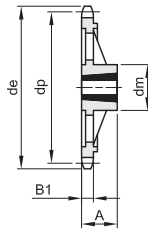
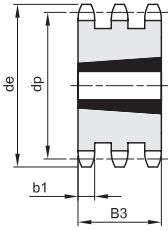
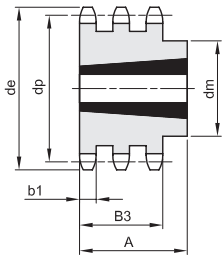
|     |      |      |     |   |    |
|-----|------|------|-----|---|----|
| B1  | B2   | B3   | b1  | C | r3 |
| 5,3 | 15,4 | 25,6 | 5,2 | 1 | 10 |



1

2

3



4

5

6

7

8

**Materiale C 43 UNI 7847 / \* Materiale Ghisa G 22**

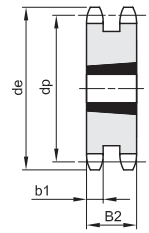
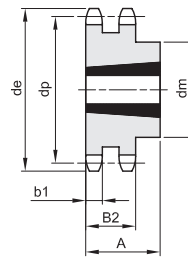
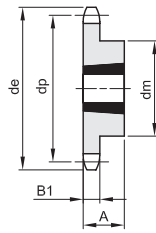
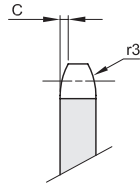
| Z   | de    | dp     | semplici |    |         |      | doppi |    |    |         | tripli |      |      |      |         |      |      |
|-----|-------|--------|----------|----|---------|------|-------|----|----|---------|--------|------|------|------|---------|------|------|
|     |       |        | dm       | A  | Bussola | Tipo | Kg.   | dm | A  | Bussola | Tipo   | Kg.  | dm   | A    | Bussola | Tipo | Kg.  |
| 17  | 55,5  | 51,83  | 45       | 22 | 1008    | 1    | 0,11  | 41 | 22 | 1008    | 2      | 0,11 | 25,6 | 1008 | 5       | 0,15 |      |
| 18  | 58,6  | 54,85  | 45       | 22 | 1008    | 1    | 0,14  | 43 | 22 | 1008    | 2      | 0,15 |      |      |         |      |      |
| 19  | 61,6  | 57,86  | 45       | 22 | 1008    | 1    | 0,15  | 46 | 22 | 1008    | 2      | 0,18 | 25,6 | 1008 | 5       | 0,24 |      |
| 20  | 64,6  | 60,89  | 46       | 22 | 1008    | 1    | 0,16  | 48 | 22 | 1008    | 2      | 0,22 |      |      |         |      |      |
| 21  | 67,6  | 63,90  | 46       | 22 | 1008    | 1    | 0,18  | 49 | 22 | 1008    | 2      | 0,16 | 25,6 | 1008 | 5       | 0,34 |      |
| 22  | 70,6  | 66,93  | 55       | 22 | 1108    | 1    | 0,25  | 52 | 22 | 1108    | 2      | 0,28 |      |      |         |      |      |
| 23  | 73,7  | 69,95  | 63       | 25 | 1210    | 1    | 0,27  | 59 | 25 | 1210    | 2      | 0,27 | 25,6 | 1210 | 5       | 0,30 |      |
| 24  | 76,7  | 72,97  | 63       | 25 | 1210    | 1    | 0,30  | 61 | 25 | 1210    | 2      | 0,32 |      |      |         |      |      |
| 25  | 79,7  | 75,99  | 63       | 25 | 1210    | 1    | 0,32  | 64 | 25 | 1210    | 2      | 0,37 | 25,6 | 1210 | 5       | 0,41 |      |
| 26  | 82,7  | 79,02  | 63       | 25 | 1210    | 1    | 0,33  | 65 | 25 | 1210    | 2      | 0,44 |      |      |         |      |      |
| 27  | 85,7  | 82,04  | 63       | 25 | 1210    | 1    | 0,34  | 70 | 25 | 1210    | 2      | 0,50 | 25,6 | 1210 | 5       | 0,55 |      |
| 28  | 88,8  | 85,07  | 63       | 25 | 1210    | 1    | 0,37  | 70 | 25 | 1210    | 2      | 0,57 |      |      |         |      |      |
| 30  | 94,8  | 91,12  | 63       | 25 | 1210    | 1    | 0,39  | 75 | 25 | 1210    | 2      | 0,68 | 79   | 38   | 1615    | 4    | 0,88 |
| 38  | 119,0 | 115,34 | 70       | 25 | 1210    | 1    | 0,65  | 80 | 25 | 1610    | 2      | 1,03 | 90   | 38   | 1615    | 4    | 1,75 |
| 45  | 141,1 | 136,54 | 70       | 25 | 1210    | 1    | 1,01  |    |    |         |        |      |      |      |         |      |      |
| 57* | 177,5 | 172,91 | 83       | 25 | 1210    | 6    | 1,34  | 92 | 25 | 1610    | 7      | 1,16 |      |      |         |      |      |
| 76* | 235,1 | 230,49 | 83       | 25 | 1210    | 6    | 1,84  | 92 | 25 | 1610    | 7      | 2,19 |      |      |         |      |      |

# PIGNONI PER BUSSOLA CONICA - DIN 8187 - ISO 606

## SPROCKETS FOR TAPER BUSHES - DIN 8187 - ISO 606

**1/2" x 5/16"**  
**12,7 x 7,75 mm**  
**Rullo 8,51 mm**  
**08B - 1 - 2 - 3**

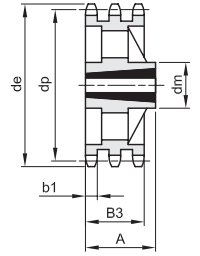
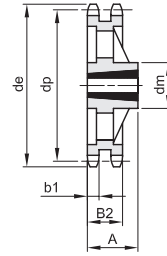
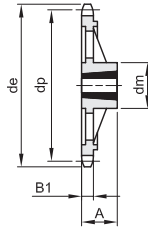
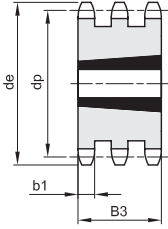
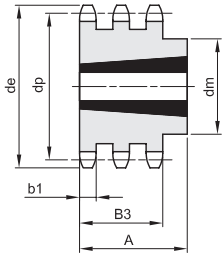
|     |    |      |    |     |    |
|-----|----|------|----|-----|----|
| B1  | B2 | B3   | b1 | C   | r3 |
| 7,2 | 21 | 34,9 | 7  | 1,3 | 13 |



1

2

3



4

5

6

7

8

Materiale C 43 UNI 7847 / \* Materiale Ghisa G 22

| Z   | de    | dp     | semplici |    |         |      | doppi |     |    |         | tripli |      |    |      |         |      |      |
|-----|-------|--------|----------|----|---------|------|-------|-----|----|---------|--------|------|----|------|---------|------|------|
|     |       |        | dm       | A  | Bussola | Tipo | Kg.   | dm  | A  | Bussola | Tipo   | Kg.  | dm | A    | Bussola | Tipo | Kg.  |
| 15  | 66,5  | 61,80  | 45       | 22 | 1008    | 1    | 0,16  | 46  | 22 | 1008    | 2      | 0,22 |    | 34,9 | 1008    | 5    | 0,36 |
| 16  | 69,9  | 65,10  | 50       | 22 | 1108    | 1    | 0,20  | 50  | 22 | 1108    | 2      | 0,22 |    |      |         |      |      |
| 17  | 74,5  | 69,11  | 60       | 25 | 1210    | 1    | 0,22  | 56  | 25 | 1210    | 2      | 0,23 |    | 34,9 | 1210    | 5    | 0,35 |
| 18  | 78,0  | 73,14  | 60       | 25 | 1210    | 1    | 0,27  | 60  | 25 | 1210    | 2      | 0,30 |    |      |         |      |      |
| 19  | 82,5  | 77,15  | 63       | 25 | 1210    | 1    | 0,33  | 62  | 25 | 1210    | 2      | 0,38 | 62 | 38   | 1215    | 4    | 0,61 |
| 20  | 86,0  | 81,19  | 67       | 25 | 1610    | 1    | 0,27  | 66  | 25 | 1610    | 2      | 0,45 |    |      |         |      |      |
| 21  | 90,6  | 85,21  | 71       | 25 | 1610    | 1    | 0,36  | 70  | 25 | 1610    | 2      | 0,50 | 70 | 38   | 1615    | 4    | 0,65 |
| 22  | 94,1  | 89,24  | 71       | 25 | 1610    | 1    | 0,36  | 76  | 25 | 1610    | 2      | 0,55 |    |      |         |      |      |
| 23  | 98,7  | 93,26  | 76       | 25 | 1610    | 1    | 0,50  | 79  | 25 | 1610    | 2      | 0,62 | 70 | 38   | 1615    | 4    | 0,93 |
| 24  | 102,1 | 97,29  | 76       | 25 | 1610    | 1    | 0,53  | 84  | 32 | 2012    | 2      | 0,68 |    |      |         |      |      |
| 25  | 106,7 | 101,32 | 76       | 25 | 1610    | 1    | 0,56  | 87  | 32 | 2012    | 2      | 0,72 |    | 34,9 | 2012    | 5    | 0,85 |
| 26  | 110,2 | 105,36 | 76       | 25 | 1610    | 1    | 0,60  | 87  | 32 | 2012    | 2      | 0,82 |    |      |         |      |      |
| 27  | 114,8 | 109,39 | 76       | 25 | 1610    | 1    | 0,63  | 87  | 32 | 2012    | 2      | 0,92 |    | 34,9 | 2012    | 5    | 1,18 |
| 28  | 118,3 | 113,42 | 90       | 32 | 2012    | 1    | 0,77  | 87  | 32 | 2012    | 2      | 1,10 |    |      |         |      |      |
| 30  | 126,9 | 121,49 | 90       | 32 | 2012    | 1    | 0,91  | 87  | 32 | 2012    | 2      | 1,24 |    | 34,9 | 2012    | 5    | 1,73 |
| 38  | 159,2 | 153,79 | 90       | 32 | 2012    | 1    | 1,25  | 100 | 32 | 2012    | 2      | 2,50 |    | 34,9 | 2012    | 5    | 3,53 |
| 45  | 188,6 | 182,07 | 111      | 32 | 2012    | 1    | 1,68  |     |    |         |        |      |    |      |         |      |      |
| 57* | 237,1 | 230,54 | 111      | 32 | 2012    | 6    | 2,78  | 111 | 32 | 2012    | 7      | 3,64 |    |      |         |      |      |
| 76* | 313,9 | 307,33 | 111      | 32 | 2012    | 6    | 3,81  | 111 | 32 | 2012    | 7      | 5,09 |    |      |         |      |      |





# PIGNONI PER BUSSOLA CONICA - DIN 8187 - ISO 606

## SPROCKETS FOR TAPER BUSHES - DIN 8187 - ISO 606

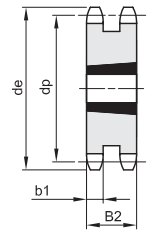
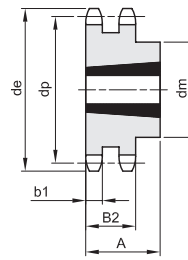
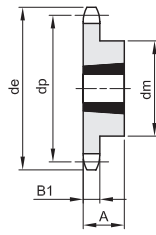
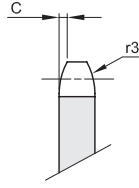
**3/4" x 7/16"**

**19,05 x 11,68 mm**

**Rullo 12,07 mm**

**12B - 1 - 2 - 3**

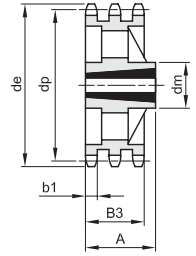
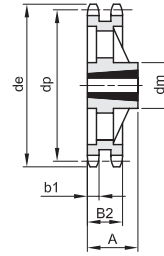
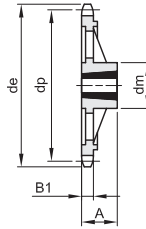
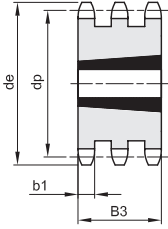
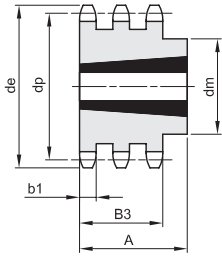
|      |      |      |      |   |    |
|------|------|------|------|---|----|
| B1   | B2   | B3   | b1   | C | r3 |
| 11,1 | 30,3 | 49,8 | 10,8 | 2 | 19 |



1

2

3



4

5

6

7

8

Materiale C 43 UNI 7847 / \* Materiale Ghisa G 22

| Z   | de    | dp     | semplici |    |         |      | doppi |     |      |         | tripli |       |     |      |         |      |       |  |
|-----|-------|--------|----------|----|---------|------|-------|-----|------|---------|--------|-------|-----|------|---------|------|-------|--|
|     |       |        | dm       | A  | Bussola | Tipo | Kg.   | dm  | A    | Bussola | Tipo   | Kg.   | dm  | A    | Bussola | Tipo | Kg.   |  |
| 13  | 87,8  | 79,60  | 60       | 25 | 1210    | 1    | 0,35  |     |      |         |        |       |     |      |         |      |       |  |
| 14  | 93,8  | 85,61  | 67       | 25 | 1610    | 1    | 0,40  |     |      |         |        |       |     |      |         |      |       |  |
| 15  | 99,8  | 91,62  | 70       | 25 | 1610    | 1    | 0,44  |     | 30,3 | 1610    | 3      | 0,68  |     | 49,8 | 1615    | 5    | 1,11  |  |
| 16  | 105,8 | 97,65  | 71       | 25 | 1610    | 1    | 0,53  |     | 30,3 | 1610    | 3      | 0,89  |     |      |         |      |       |  |
| 17  | 111,9 | 103,67 | 76       | 25 | 1610    | 1    | 0,66  |     | 30,3 | 1610    | 3      | 1,14  |     | 49,8 | 1615    | 5    | 1,75  |  |
| 18  | 117,9 | 109,71 | 90       | 32 | 2012    | 1    | 0,86  | 90  | 32   | 2012    | 2      | 1,18  |     |      |         |      |       |  |
| 19  | 123,9 | 115,73 | 90       | 32 | 2012    | 1    | 0,94  | 90  | 32   | 2012    | 2      | 1,24  |     | 49,8 | 2012    | 5    | 2,02  |  |
| 20  | 130,0 | 121,78 | 90       | 32 | 2012    | 1    | 1,04  | 108 | 44   | 2517    | 2      | 1,40  |     |      |         |      |       |  |
| 21  | 136,0 | 127,81 | 102      | 44 | 2517    | 1    | 1,24  | 108 | 44   | 2517    | 2      | 1,68  |     | 49,8 | 2517    | 5    | 2,09  |  |
| 22  | 142,0 | 133,86 | 108      | 44 | 2517    | 1    | 1,60  | 108 | 44   | 2517    | 2      | 1,99  |     |      |         |      |       |  |
| 23  | 148,1 | 139,90 | 108      | 44 | 2517    | 1    | 1,70  | 108 | 44   | 2517    | 2      | 2,24  |     | 49,8 | 2517    | 5    | 3,00  |  |
| 24  | 154,1 | 145,94 | 108      | 44 | 2517    | 1    | 1,81  | 108 | 44   | 2517    | 2      | 2,54  |     |      |         |      |       |  |
| 25  | 160,2 | 151,99 | 108      | 44 | 2517    | 1    | 1,93  | 108 | 44   | 2517    | 2      | 2,87  |     | 49,8 | 2517    | 5    | 3,98  |  |
| 26  | 166,2 | 158,04 | 108      | 44 | 2517    | 1    | 2,04  | 108 | 44   | 2517    | 2      | 3,17  |     |      |         |      |       |  |
| 27  | 172,3 | 164,09 | 108      | 44 | 2517    | 1    | 2,14  | 108 | 44   | 2517    | 2      | 3,55  | 140 | 51   | 3020    | 4    | 3,90  |  |
| 28  | 178,3 | 170,13 | 108      | 44 | 2517    | 1    | 2,37  | 108 | 44   | 2517    | 2      | 4,10  |     |      |         |      |       |  |
| 30  | 190,4 | 182,24 | 108      | 44 | 2517    | 1    | 2,60  | 108 | 44   | 2517    | 2      | 4,62  | 140 | 51   | 3020    | 4    | 5,64  |  |
| 38  | 238,9 | 230,69 | 108      | 44 | 2517    | 1    | 3,93  | 140 | 51   | 3020    | 2      | 8,11  | 140 | 51   | 3020    | 4    | 11,58 |  |
| 45  | 283,2 | 273,10 | 124      | 44 | 2517    | 1    | 5,52  |     |      |         |        |       |     |      |         |      |       |  |
| 57* | 355,9 | 345,81 | 124      | 44 | 2517    | 6    | 6,48  | 160 | 51   | 3020    | 7      | 10,28 | 160 | 51   | 3020    | 8    | 13,23 |  |
| 76* | 471,1 | 460,99 | 124      | 44 | 2517    | 6    | 9,71  | 160 | 51   | 3020    | 7      | 15,24 |     |      |         |      |       |  |

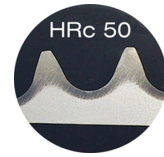
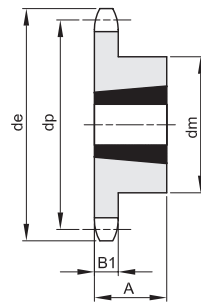
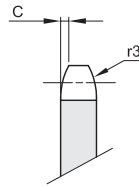




**PIGNONI PER BUSSOLA CONICA TEMPERATI AD INDUZIONE - DIN 8187 - ISO 606**  
**SPROCKETS FOR TAPER BUSHES WITH HARDENED TEETH - DIN 8187 - ISO 606**

**3/8" x 7/32"**

**9,525 x 5,72 mm**  
**Rullo 6,35 mm**  
**06B - 1**



|     |   |    |
|-----|---|----|
| B1  | C | r3 |
| 5,3 | 1 | 10 |

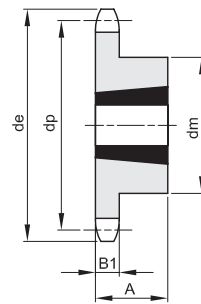
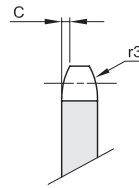
Materiale C 43 UNI 7847

| Z  | de   | dp    | dm | semplici |         |      |
|----|------|-------|----|----------|---------|------|
|    |      |       |    | A        | bussola | Kg.  |
| 17 | 55,5 | 51,83 | 45 | 22       | 1008    | 0,11 |
| 19 | 61,6 | 57,86 | 45 | 22       | 1008    | 0,15 |
| 21 | 67,6 | 63,90 | 46 | 22       | 1008    | 0,18 |
| 23 | 73,7 | 69,95 | 63 | 25       | 1210    | 0,27 |
| 25 | 79,7 | 75,99 | 63 | 25       | 1210    | 0,32 |

| Z  | de   | dp    | dm | semplici |         |      |
|----|------|-------|----|----------|---------|------|
|    |      |       |    | A        | bussola | Kg.  |
| 27 | 85,7 | 82,04 | 63 | 25       | 1210    | 0,34 |
| 30 | 94,8 | 91,12 | 63 | 25       | 1210    | 0,39 |

**1/2" x 5/16"**

**12,7 x 7,75 mm**  
**Rullo 8,51 mm**  
**08B - 1**



|     |     |    |
|-----|-----|----|
| B1  | C   | r3 |
| 7,2 | 1,3 | 13 |

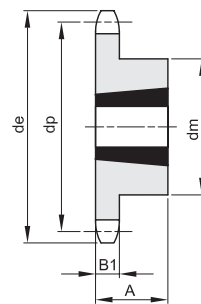
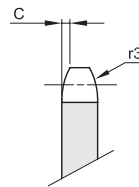
Materiale C 43 UNI 7847

| Z  | de   | dp    | dm | semplici |         |      |
|----|------|-------|----|----------|---------|------|
|    |      |       |    | A        | bussola | Kg.  |
| 15 | 66,5 | 61,80 | 45 | 22       | 1008    | 0,16 |
| 17 | 74,5 | 69,11 | 60 | 25       | 1210    | 0,22 |
| 19 | 82,5 | 77,15 | 63 | 25       | 1210    | 0,33 |
| 21 | 90,6 | 85,21 | 71 | 25       | 1610    | 0,36 |
| 23 | 98,7 | 93,26 | 76 | 25       | 1610    | 0,50 |

| Z  | de    | dp     | dm | semplici |         |      |
|----|-------|--------|----|----------|---------|------|
|    |       |        |    | A        | bussola | Kg.  |
| 25 | 106,7 | 101,32 | 76 | 25       | 1610    | 0,56 |
| 27 | 114,8 | 109,39 | 76 | 25       | 1610    | 0,63 |
| 30 | 126,9 | 121,49 | 90 | 32       | 2012    | 0,91 |

**5/8" x 3/8"**

**15,875 x 9,65 mm**  
**Rullo 10,16 mm**  
**10B - 1**



|     |     |    |
|-----|-----|----|
| B1  | C   | r3 |
| 9,1 | 1,6 | 16 |

Materiale C 43 UNI 7847

| Z  | de    | dp     | dm | semplici |         |      |
|----|-------|--------|----|----------|---------|------|
|    |       |        |    | A        | bussola | Kg.  |
| 13 | 73,2  | 66,33  | 47 | 22       | 1008    | 0,23 |
| 15 | 83,2  | 76,35  | 60 | 25       | 1210    | 0,30 |
| 17 | 93,3  | 86,39  | 71 | 25       | 1610    | 0,38 |
| 19 | 103,3 | 96,44  | 75 | 25       | 1610    | 0,54 |
| 21 | 113,4 | 106,51 | 76 | 25       | 1610    | 0,65 |

| Z  | de    | dp     | dm | semplici |         |      |
|----|-------|--------|----|----------|---------|------|
|    |       |        |    | A        | bussola | Kg.  |
| 23 | 123,5 | 116,58 | 76 | 25       | 1610    | 0,77 |
| 25 | 133,6 | 126,66 | 90 | 32       | 2012    | 1,05 |
| 27 | 143,6 | 136,74 | 90 | 32       | 2012    | 1,17 |
| 30 | 158,8 | 151,87 | 90 | 32       | 2012    | 1,40 |

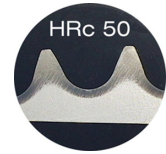
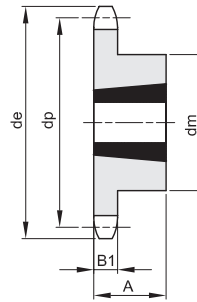
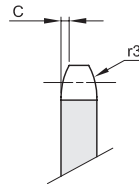
**PIGNONI PER BUSSOLA CONICA TEMPERATI AD INDUZIONE - DIN 8187 - ISO 606**  
**SPROCKETS FOR TAPER BUSHES WITH HARDENED TEETH - DIN 8187 - ISO 606**

**3/4" x 7/16"**

**19,05 x 11,68 mm**  
**Rullo 12,07 mm**  
**12B - 1**

|      |   |    |
|------|---|----|
| B1   | C | r3 |
| 11,1 | 2 | 19 |

Materiale: C 43 UNI 7847



| Z  | de    | dp     | dm  | semplici |         |      |
|----|-------|--------|-----|----------|---------|------|
|    |       |        |     | A        | bussola | Kg.  |
| 13 | 87,8  | 79,60  | 60  | 25       | 1210    | 0,35 |
| 15 | 99,8  | 91,62  | 70  | 25       | 1610    | 0,44 |
| 17 | 111,9 | 103,67 | 76  | 25       | 1610    | 0,66 |
| 19 | 123,9 | 115,73 | 90  | 32       | 2012    | 0,94 |
| 21 | 136,0 | 127,81 | 102 | 44       | 2517    | 1,24 |

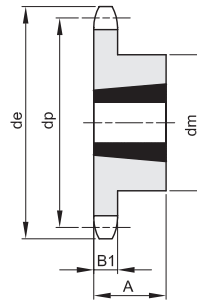
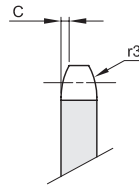
| Z  | de    | dp     | dm  | semplici |         |      |
|----|-------|--------|-----|----------|---------|------|
|    |       |        |     | A        | bussola | Kg.  |
| 23 | 148,1 | 139,90 | 108 | 44       | 2517    | 1,70 |
| 25 | 160,2 | 151,99 | 108 | 44       | 2517    | 1,93 |
| 27 | 172,3 | 164,09 | 108 | 44       | 2517    | 2,14 |
| 30 | 190,4 | 182,24 | 108 | 44       | 2517    | 2,60 |

**1" x 17,02 mm**

**25,4 x 17,02 mm**  
**Rullo 15,88 mm**  
**16B - 1**

|      |     |    |
|------|-----|----|
| B1   | C   | r3 |
| 16,2 | 2,5 | 26 |

Materiale: C 43 UNI 7847



| Z  | de    | dp     | dm  | semplici |         |      |
|----|-------|--------|-----|----------|---------|------|
|    |       |        |     | A        | bussola | Kg.  |
| 15 | 133,7 | 122,16 | 76  | 38       | 1615    | 1,30 |
| 17 | 149,8 | 138,23 | 90  | 32       | 2012    | 1,59 |
| 19 | 165,9 | 154,31 | 108 | 44       | 2517    | 2,29 |
| 21 | 182,0 | 170,42 | 110 | 44       | 2517    | 2,81 |
| 23 | 198,1 | 186,53 | 110 | 44       | 2517    | 3,38 |

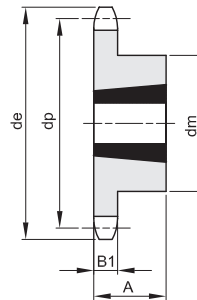
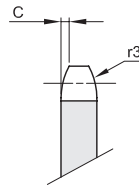
| Z  | de    | dp     | dm  | semplici |         |      |
|----|-------|--------|-----|----------|---------|------|
|    |       |        |     | A        | bussola | Kg.  |
| 25 | 214,2 | 202,66 | 110 | 44       | 2517    | 3,97 |
| 27 | 230,4 | 218,79 | 110 | 44       | 2517    | 4,55 |
| 30 | 254,6 | 242,99 | 120 | 44       | 2517    | 5,97 |

**1"1/4 x 3/4"**

**31,75 x 19,56 mm**  
**Rullo 19,05 mm**  
**20B - 1**

|      |     |    |
|------|-----|----|
| B1   | C   | r3 |
| 18,5 | 3,5 | 32 |

Materiale: C 43 UNI 7847



| Z  | de    | dp     | dm  | semplici |         |      |
|----|-------|--------|-----|----------|---------|------|
|    |       |        |     | A        | bussola | Kg.  |
| 15 | 167,7 | 152,72 | 110 | 44       | 2517    | 3,39 |
| 17 | 187,7 | 172,78 | 110 | 44       | 2517    | 5,07 |
| 19 | 207,9 | 192,91 | 110 | 44       | 2517    | 6,75 |
| 21 | 228,0 | 213,04 | 120 | 44       | 2517    | 7,70 |
| 23 | 248,2 | 233,17 | 120 | 44       | 2517    | 8,78 |

| Z  | de    | dp     | dm  | semplici |         |      |
|----|-------|--------|-----|----------|---------|------|
|    |       |        |     | A        | bussola | Kg.  |
| 25 | 268,4 | 253,33 | 120 | 44       | 2517    | 9,50 |

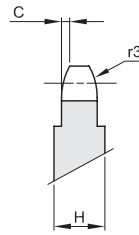
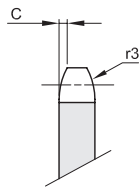
# CORONE PER CATENE A RULLI - DIN 8187 - ISO 606

## PLATE WHEELS FOR ROLLER CHAINS - DIN 8187 - ISO 606

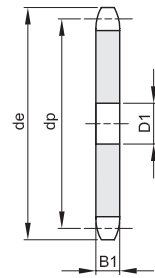
**5 x 2,5 mm**

**Rullo 3,2 mm**

**03 - 1**



Da Z 51 H=4 mm



|     |    |    |    |     |    |
|-----|----|----|----|-----|----|
| B1  | B2 | B3 | b1 | C   | r3 |
| 2,3 |    |    |    | 0,4 | 5  |

| Z   | de    | dp     | semplici<br>D1 Kg. |      | doppie<br>D2 Kg. |  | triple<br>D3 Kg. |  |
|-----|-------|--------|--------------------|------|------------------|--|------------------|--|
| 8   | 14,8  | 13,06  | 4                  | 0,01 |                  |  |                  |  |
| 9   | 16,4  | 14,62  | 4                  | 0,01 |                  |  |                  |  |
| 10  | 17,9  | 16,18  | 4                  | 0,01 |                  |  |                  |  |
| 11  | 19,5  | 17,75  | 5                  | 0,01 |                  |  |                  |  |
| 12  | 21,1  | 19,32  | 5                  | 0,01 |                  |  |                  |  |
| 13  | 22,6  | 20,89  | 5                  | 0,01 |                  |  |                  |  |
| 14  | 24,2  | 22,47  | 5                  | 0,01 |                  |  |                  |  |
| 15  | 25,8  | 24,04  | 5                  | 0,01 |                  |  |                  |  |
| 16  | 27,4  | 25,63  | 6                  | 0,01 |                  |  |                  |  |
| 17  | 29,0  | 27,20  | 6                  | 0,01 |                  |  |                  |  |
| 18  | 30,5  | 28,79  | 6                  | 0,01 |                  |  |                  |  |
| 19  | 32,1  | 30,38  | 6                  | 0,01 |                  |  |                  |  |
| 20  | 33,7  | 31,96  | 6                  | 0,01 |                  |  |                  |  |
| 21  | 35,3  | 33,54  | 8                  | 0,01 |                  |  |                  |  |
| 22  | 36,9  | 35,13  | 8                  | 0,02 |                  |  |                  |  |
| 23  | 38,5  | 36,72  | 8                  | 0,02 |                  |  |                  |  |
| 24  | 40,1  | 38,30  | 8                  | 0,02 |                  |  |                  |  |
| 25  | 41,6  | 39,89  | 8                  | 0,02 |                  |  |                  |  |
| 26  | 43,2  | 41,48  | 8                  | 0,02 |                  |  |                  |  |
| 27  | 44,8  | 43,07  | 8                  | 0,02 |                  |  |                  |  |
| 28  | 46,4  | 44,65  | 8                  | 0,03 |                  |  |                  |  |
| 29  | 48,0  | 46,25  |                    |      |                  |  |                  |  |
| 30  | 49,6  | 47,83  | 8                  | 0,03 |                  |  |                  |  |
| 31  | 51,2  | 49,42  |                    |      |                  |  |                  |  |
| 32  | 52,8  | 51,01  | 8                  | 0,03 |                  |  |                  |  |
| 33  | 54,4  | 52,60  | 8                  | 0,04 |                  |  |                  |  |
| 34  | 55,9  | 54,19  | 8                  | 0,04 |                  |  |                  |  |
| 35  | 57,5  | 55,78  | 8                  | 0,04 |                  |  |                  |  |
| 36  | 59,1  | 57,37  | 8                  | 0,04 |                  |  |                  |  |
| 37  | 60,7  | 58,96  | 8                  | 0,05 |                  |  |                  |  |
| 38  | 62,3  | 60,54  | 8                  | 0,05 |                  |  |                  |  |
| 39  | 63,9  | 62,13  |                    |      |                  |  |                  |  |
| 40  | 65,5  | 63,73  | 8                  | 0,05 |                  |  |                  |  |
| 41  | 67,1  | 65,31  |                    |      |                  |  |                  |  |
| 42  | 68,7  | 66,91  | 8                  | 0,06 |                  |  |                  |  |
| 43  | 70,2  | 68,49  |                    |      |                  |  |                  |  |
| 44  | 71,8  | 70,09  | 8                  | 0,07 |                  |  |                  |  |
| 45  | 73,4  | 71,68  | 8                  | 0,07 |                  |  |                  |  |
| 46  | 75,0  | 73,27  | 8                  | 0,07 |                  |  |                  |  |
| 47  | 76,6  | 74,86  |                    |      |                  |  |                  |  |
| 48  | 78,2  | 76,45  | 8                  | 0,08 |                  |  |                  |  |
| 49  | 79,8  | 78,03  |                    |      |                  |  |                  |  |
| 50  | 81,4  | 79,63  | 8                  | 0,08 |                  |  |                  |  |
| 51  | 83,0  | 81,22  |                    |      |                  |  |                  |  |
| 52  | 84,6  | 82,81  | 10                 | 0,17 |                  |  |                  |  |
| 53  | 86,2  | 84,40  |                    |      |                  |  |                  |  |
| 54  | 87,7  | 85,97  | 10                 | 0,18 |                  |  |                  |  |
| 55  | 89,3  | 87,58  | 10                 | 0,19 |                  |  |                  |  |
| 56  | 90,9  | 89,17  | 10                 | 0,20 |                  |  |                  |  |
| 57  | 92,6  | 90,76  | 10                 | 0,20 |                  |  |                  |  |
| 58  | 94,1  | 92,35  | 10                 | 0,21 |                  |  |                  |  |
| 59  | 95,7  | 93,94  |                    |      |                  |  |                  |  |
| 60  | 97,3  | 95,53  | 10                 | 0,23 |                  |  |                  |  |
| 62  | 100,5 | 98,72  | 12                 | 0,24 |                  |  |                  |  |
| 64  | 103,7 | 101,90 |                    |      |                  |  |                  |  |
| 65  | 105,2 | 103,49 | 12                 | 0,27 |                  |  |                  |  |
| 66  | 106,8 | 105,08 | 12                 | 0,28 |                  |  |                  |  |
| 68  | 110,0 | 108,26 |                    |      |                  |  |                  |  |
| 70  | 113,2 | 111,44 | 12                 | 0,31 |                  |  |                  |  |
| 72  | 116,4 | 114,63 |                    |      |                  |  |                  |  |
| 75  | 121,2 | 119,40 | 12                 | 0,36 |                  |  |                  |  |
| 76  | 122,7 | 120,99 | 12                 | 0,37 |                  |  |                  |  |
| 78  | 125,9 | 124,17 |                    |      |                  |  |                  |  |
| 80  | 129,1 | 127,35 | 12                 | 0,41 |                  |  |                  |  |
| 85  | 137,1 | 135,31 | 14                 | 0,46 |                  |  |                  |  |
| 90  | 145,0 | 143,27 | 14                 | 0,52 |                  |  |                  |  |
| 95  | 153,0 | 151,22 | 14                 | 0,58 |                  |  |                  |  |
| 100 | 160,9 | 159,18 | 14                 | 0,65 |                  |  |                  |  |
| 110 | 176,8 | 175,09 | 14                 | 0,79 |                  |  |                  |  |
| 114 | 183,2 | 181,46 | 14                 | 0,85 |                  |  |                  |  |
| 120 | 192,8 | 191,01 | 14                 | 0,95 |                  |  |                  |  |
| 125 | 200,7 | 198,96 | 14                 | 1,03 |                  |  |                  |  |



























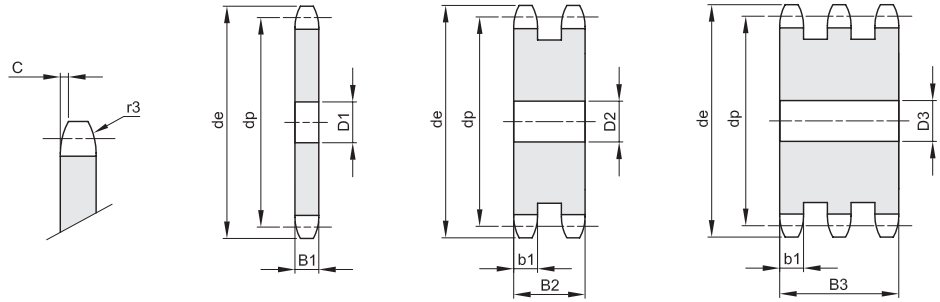


# CORONE PER CATENE A RULLI - DIN 8187 - ISO 606

## PLATE WHEELS FOR ROLLER CHAINS - DIN 8187 - ISO 606

**2" x 1"1/4**  
**50,8 x 30,99 mm**  
**Rullo 29,21 mm**  
**32B - 1 - 2 - 3**

|      |      |     |      |   |    |
|------|------|-----|------|---|----|
| B1   | B2   | B3  | b1   | C | r3 |
| 29,4 | 87,4 | 146 | 28,8 | 6 | 51 |



| Z  | de     | dp      | semplici |        | doppie |        | triple |         |
|----|--------|---------|----------|--------|--------|--------|--------|---------|
|    |        |         | D1       | Kg.    | D2     | Kg.    | D3     | Kg.     |
| 8  | 152,0  | 132,74  | 25       | 2,27   | 25     | 5,53   | 25     | 8,83    |
| 9  | 168,0  | 148,54  | 25       | 2,99   | 25     | 7,46   | 25     | 11,99   |
| 10 | 184,0  | 164,39  | 25       | 3,81   | 25     | 9,68   | 25     | 15,63   |
| 11 | 200,0  | 180,31  | 30       | 4,67   | 35     | 11,86  | 35     | 19,20   |
| 12 | 216,0  | 196,29  | 30       | 5,67   | 35     | 14,64  | 35     | 23,78   |
| 13 | 235,0  | 212,29  | 30       | 6,77   | 35     | 17,70  | 35     | 28,83   |
| 14 | 251,0  | 228,29  | 30       | 7,97   | 35     | 21,05  | 35     | 34,35   |
| 15 | 267,0  | 244,30  | 30       | 9,26   | 35     | 24,68  | 35     | 40,34   |
| 16 | 283,0  | 260,40  | 30       | 10,64  | 40     | 28,38  | 40     | 46,47   |
| 17 | 299,0  | 276,46  | 30       | 12,12  | 40     | 32,57  | 40     | 53,40   |
| 18 | 315,0  | 292,55  | 30       | 13,69  | 40     | 37,05  | 40     | 60,80   |
| 19 | 331,0  | 308,66  | 30       | 15,36  | 40     | 41,80  | 40     | 68,68   |
| 20 | 347,0  | 324,71  | 40       | 16,99  | 40     | 46,84  | 40     | 77,02   |
| 21 | 363,0  | 340,82  | 40       | 18,85  | 40     | 52,15  | 40     | 85,84   |
| 22 | 379,0  | 356,98  | 40       | 20,80  | 40     | 57,75  |        |         |
| 23 | 396,0  | 373,08  | 40       | 22,85  | 40     | 63,63  | 40     | 104,88  |
| 24 | 412,0  | 389,18  | 40       | 24,99  | 40     | 69,80  |        |         |
| 25 | 428,0  | 405,33  | 40       | 27,23  | 40     | 76,24  | 40     | 125,81  |
| 26 | 444,0  | 421,44  | 40       | 29,56  | 40     | 82,97  |        |         |
| 28 | 476,0  | 453,69  | 40       | 34,51  | 40     | 97,27  |        |         |
| 30 | 508,0  | 486,00  | 40       | 39,84  | 40     | 112,70 | 40     | 186,37  |
| 32 | 541,0  | 518,27  | 40       | 45,54  |        |        |        |         |
| 35 | 589,0  | 566,71  | 40       | 54,81  | 40     | 156,19 | 40     | 258,69  |
| 38 | 638,0  | 615,16  | 40       | 64,93  | 40     | 185,67 | 40     | 307,73  |
| 40 | 670,0  | 647,47  | 40       | 72,16  | 40     | 206,73 |        |         |
| 45 | 751,0  | 728,24  | 40       | 91,87  | 40     | 265,32 | 40     | 438,64  |
| 50 | 832,0  | 809,04  | 40       | 113,96 | 40     | 328,95 | 40     | 549,27  |
| 57 | 945,0  | 922,16  | 40       | 148,86 | 40     | 431,27 | 40     | 716,72  |
| 60 | 993,0  | 970,65  | 40       | 165,24 |        |        |        |         |
| 76 | 1252,0 | 1229,27 | 40       | 267,00 | 40     | 757,78 | 40     | 1295,64 |









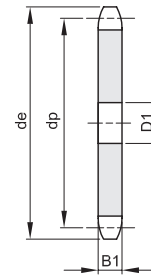
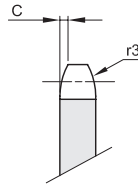




**CORONE PER CATENE A RULLI - DIN 8188 - ISO 606 - ANSI B 29.1**  
**PLATE WHEELS FOR ROLLER CHAINS - DIN 8188 - ISO 606 - ANSI B 29.1**

**ASA 120**

**38,1 x 25,4 mm**  
**Rullo 22,23 mm**  
**24A - 1**



|      |    |    |    |     |      |
|------|----|----|----|-----|------|
| B1   | B2 | B3 | b1 | C   | r3   |
| 23,5 |    |    |    | 4,8 | 40,5 |

| Z  | de     | dp      | semplici D1 Kg. |       | doppie D2 Kg. |  | triple D3 Kg. |  |
|----|--------|---------|-----------------|-------|---------------|--|---------------|--|
| 8  | 113,0  | 99,55   |                 |       |               |  |               |  |
| 9  | 125,0  | 111,40  | 20              | 1,47  |               |  |               |  |
| 10 | 137,0  | 123,29  | 20              | 1,85  |               |  |               |  |
| 11 | 149,0  | 135,21  | 25              | 2,24  |               |  |               |  |
| 12 | 161,0  | 147,22  |                 |       |               |  |               |  |
| 13 | 173,0  | 159,18  | 25              | 3,22  |               |  |               |  |
| 14 | 185,0  | 171,22  | 25              | 3,68  |               |  |               |  |
| 15 | 197,0  | 183,26  | 25              | 4,34  |               |  |               |  |
| 16 | 209,0  | 195,30  | 25              | 4,88  |               |  |               |  |
| 17 | 221,0  | 207,34  | 25              | 5,69  |               |  |               |  |
| 18 | 233,0  | 219,42  | 25              | 6,29  |               |  |               |  |
| 19 | 245,5  | 231,49  |                 |       |               |  |               |  |
| 20 | 257,5  | 243,57  | 25              | 7,95  |               |  |               |  |
| 21 | 270,5  | 255,65  |                 |       |               |  |               |  |
| 22 | 282,5  | 267,73  |                 |       |               |  |               |  |
| 23 | 294,5  | 279,80  |                 |       |               |  |               |  |
| 24 | 307,0  | 291,88  |                 |       |               |  |               |  |
| 25 | 319,0  | 304,00  | 30              | 12,25 |               |  |               |  |
| 26 | 331,0  | 316,08  |                 |       |               |  |               |  |
| 27 | 343,0  | 328,19  |                 |       |               |  |               |  |
| 28 | 355,0  | 340,27  |                 |       |               |  |               |  |
| 29 | 367,5  | 352,38  |                 |       |               |  |               |  |
| 30 | 379,5  | 364,50  |                 |       |               |  |               |  |
| 31 | 391,5  | 376,62  |                 |       |               |  |               |  |
| 32 | 403,5  | 388,69  |                 |       |               |  |               |  |
| 33 | 415,5  | 400,81  |                 |       |               |  |               |  |
| 34 | 428,5  | 412,93  |                 |       |               |  |               |  |
| 35 | 440,0  | 425,04  | 30              | 24,65 |               |  |               |  |
| 36 | 452,0  | 437,16  |                 |       |               |  |               |  |
| 37 | 464,0  | 449,27  |                 |       |               |  |               |  |
| 38 | 476,5  | 461,39  |                 |       |               |  |               |  |
| 39 | 488,5  | 473,50  |                 |       |               |  |               |  |
| 40 | 501,5  | 485,62  |                 |       |               |  |               |  |
| 41 | 513,5  | 497,74  |                 |       |               |  |               |  |
| 42 | 525,5  | 509,85  |                 |       |               |  |               |  |
| 43 | 538,0  | 521,97  |                 |       |               |  |               |  |
| 44 | 550,0  | 534,08  |                 |       |               |  |               |  |
| 45 | 562,0  | 546,20  |                 |       |               |  |               |  |
| 46 | 574,0  | 558,32  |                 |       |               |  |               |  |
| 47 | 586,5  | 570,43  |                 |       |               |  |               |  |
| 48 | 598,5  | 582,55  |                 |       |               |  |               |  |
| 49 | 610,5  | 594,66  |                 |       |               |  |               |  |
| 50 | 622,5  | 606,78  |                 |       |               |  |               |  |
| 51 | 635,0  | 618,89  |                 |       |               |  |               |  |
| 52 | 647,0  | 631,01  |                 |       |               |  |               |  |
| 53 | 659,0  | 643,13  |                 |       |               |  |               |  |
| 54 | 671,0  | 655,25  |                 |       |               |  |               |  |
| 55 | 683,5  | 667,40  |                 |       |               |  |               |  |
| 56 | 695,5  | 679,50  |                 |       |               |  |               |  |
| 57 | 707,5  | 691,63  |                 |       |               |  |               |  |
| 58 | 719,5  | 703,74  |                 |       |               |  |               |  |
| 59 | 731,5  | 715,86  |                 |       |               |  |               |  |
| 60 | 745,0  | 727,97  |                 |       |               |  |               |  |
| 62 | 769,0  | 752,24  |                 |       |               |  |               |  |
| 64 | 793,5  | 776,48  |                 |       |               |  |               |  |
| 65 | 805,5  | 788,59  |                 |       |               |  |               |  |
| 66 | 817,5  | 800,71  |                 |       |               |  |               |  |
| 68 | 842,0  | 824,98  |                 |       |               |  |               |  |
| 70 | 866,0  | 849,21  |                 |       |               |  |               |  |
| 72 | 890,5  | 873,48  |                 |       |               |  |               |  |
| 75 | 926,5  | 909,83  |                 |       |               |  |               |  |
| 76 | 939,0  | 921,98  |                 |       |               |  |               |  |
| 80 | 987,5  | 970,44  |                 |       |               |  |               |  |
| 85 | 1048,0 | 1031,10 |                 |       |               |  |               |  |
| 90 | 1169,0 | 1152,33 |                 |       |               |  |               |  |





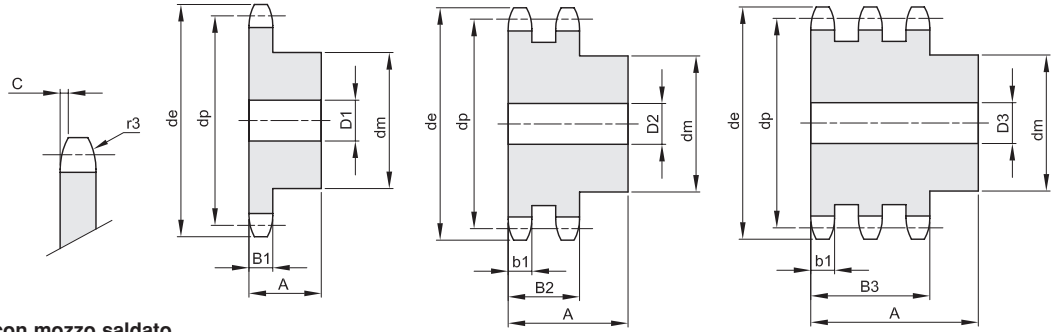




# PIGNONI PER CATENE A RULLI - DIN 8187 - ISO 606

## SPROCKETS FOR ROLLER CHAINS - DIN 8187 - ISO 606

**3/8" x 7/32"**  
**9,525 x 5,72 mm**  
**Rullo 6,35 mm**  
**06B - 1 - 2 - 3**



|     |      |      |     |   |    |
|-----|------|------|-----|---|----|
| B1  | B2   | B3   | b1  | C | r3 |
| 5,3 | 15,4 | 25,6 | 5,2 | 1 | 10 |

Materiale C 43 UNI 7847 / \*Materiale Fe - con mozzo saldato

| Z  | de    | dp     | semplici |    |    |      | doppi |    |    |      | tripli |    |    |       |
|----|-------|--------|----------|----|----|------|-------|----|----|------|--------|----|----|-------|
|    |       |        | dm       | D1 | A  | Kg.  | dm    | D2 | A  | Kg.  | dm     | D3 | A  | Kg.   |
| 8  | 28,6  | 24,89  | 15       | 8  | 20 | 0,03 | 15    | 8  | 25 | 0,04 | 15     | 8  | 32 | 0,05  |
| 9  | 31,5  | 27,85  | 18       | 8  | 20 | 0,04 | 18    | 8  | 25 | 0,05 | 18     | 8  | 32 | 0,07  |
| 10 | 34,5  | 30,82  | 20       | 8  | 20 | 0,05 | 20    | 8  | 25 | 0,07 | 20     | 10 | 32 | 0,09  |
| 11 | 37,5  | 33,80  | 22       | 8  | 25 | 0,08 | 22    | 10 | 30 | 0,10 | 22     | 12 | 35 | 0,11  |
| 12 | 40,5  | 36,80  | 25       | 8  | 25 | 0,10 | 25    | 10 | 30 | 0,13 | 25     | 12 | 35 | 0,15  |
| 13 | 43,5  | 39,80  | 28       | 8  | 25 | 0,13 | 28    | 10 | 30 | 0,16 | 28     | 12 | 35 | 0,19  |
| 14 | 46,5  | 42,80  | 31       | 8  | 25 | 0,16 | 31    | 10 | 30 | 0,20 | 31     | 12 | 35 | 0,23  |
| 15 | 49,5  | 45,81  | 34       | 8  | 25 | 0,19 | 34    | 10 | 30 | 0,24 | 34     | 12 | 35 | 0,28  |
| 16 | 52,5  | 48,82  | 37       | 10 | 28 | 0,24 | 37    | 12 | 30 | 0,27 | 37     | 12 | 35 | 0,33  |
| 17 | 55,5  | 51,83  | 40       | 10 | 28 | 0,28 | 40    | 12 | 30 | 0,32 | 40     | 12 | 35 | 0,39  |
| 18 | 58,6  | 54,85  | 43       | 10 | 28 | 0,33 | 43    | 12 | 30 | 0,38 | 43     | 12 | 35 | 0,45  |
| 19 | 61,6  | 57,87  | 45       | 10 | 28 | 0,36 | 46    | 12 | 30 | 0,42 | 46     | 12 | 35 | 0,51  |
| 20 | 64,6  | 60,89  | 46       | 10 | 28 | 0,39 | 49    | 12 | 30 | 0,48 | 49     | 12 | 35 | 0,58  |
| 21 | 67,6  | 63,91  | 48       | 12 | 28 | 0,42 | 52    | 16 | 30 | 0,52 | 52     | 16 | 40 | 0,70  |
| 22 | 70,6  | 66,93  | 50       | 12 | 28 | 0,46 | 55    | 16 | 30 | 0,58 | 55     | 16 | 40 | 0,78  |
| 23 | 73,7  | 69,95  | 52       | 12 | 28 | 0,50 | 58    | 16 | 30 | 0,64 | 58     | 16 | 40 | 0,87  |
| 24 | 76,7  | 72,97  | 54       | 12 | 28 | 0,54 | 61    | 16 | 30 | 0,71 | 61     | 16 | 40 | 0,97  |
| 25 | 79,7  | 76,00  | 57       | 12 | 28 | 0,60 | 64    | 16 | 30 | 0,79 | 64     | 16 | 40 | 1,06  |
| 26 | 82,7  | 79,02  | 60       | 12 | 28 | 0,66 | 67    | 16 | 30 | 0,87 | 67     | 16 | 40 | 1,17  |
| 27 | 85,7  | 82,04  | 60       | 12 | 28 | 0,67 | 70    | 16 | 30 | 0,94 | 70     | 16 | 40 | 1,27  |
| 28 | 88,8  | 85,07  | 60       | 12 | 28 | 0,69 | 73    | 16 | 30 | 1,03 | 73     | 16 | 40 | 1,39  |
| 29 | 91,8  | 88,09  | 60       | 12 | 28 | 0,70 | 76    | 16 | 30 | 1,11 | 76     | 16 | 40 | 1,50  |
| 30 | 94,8  | 91,12  | 60       | 12 | 30 | 0,72 | 79    | 16 | 30 | 1,20 | 79     | 16 | 40 | 1,62  |
| 31 | 97,9  | 94,15  | 65       | 14 | 30 | 0,87 | 80    | 16 | 30 | 1,27 | 80     | 16 | 40 | 1,72  |
| 32 | 100,9 | 97,17  | 65       | 14 | 30 | 0,89 | 80    | 16 | 30 | 1,32 | 80     | 16 | 40 | 1,80  |
| 33 | 103,9 | 100,20 | 65       | 14 | 30 | 0,91 | 80    | 16 | 30 | 1,37 | 80     | 16 | 40 | 1,89  |
| 34 | 106,9 | 103,23 | 65       | 14 | 30 | 0,92 | 80    | 16 | 30 | 1,43 | 85     | 16 | 40 | 2,06  |
| 35 | 110,0 | 106,26 | 65       | 14 | 30 | 0,95 | 80    | 16 | 30 | 1,49 | 85     | 16 | 40 | 2,15  |
| 36 | 113,0 | 109,29 | 70       | 16 | 30 | 1,05 | 90    | 16 | 30 | 1,70 | 90     | 16 | 40 | 2,33  |
| 37 | 116,0 | 112,32 | 70       | 16 | 30 | 1,09 | 90    | 16 | 30 | 1,76 | 90     | 16 | 40 | 2,43  |
| 38 | 119,0 | 115,34 | 70       | 16 | 30 | 1,10 | 90    | 16 | 30 | 1,81 | 90     | 16 | 40 | 2,53  |
| 39 | 122,1 | 118,37 | 70       | 16 | 30 | 1,12 | 90    | 16 | 30 | 1,88 | 90     | 16 | 40 | 2,63  |
| 40 | 125,1 | 121,40 | 70       | 16 | 30 | 1,14 | 90    | 16 | 30 | 1,95 | 90     | 16 | 40 | 2,74  |
| 42 | 132,1 | 127,46 | *78      | 16 | 35 | 1,56 | *88   | 20 | 50 | 2,44 |        |    |    |       |
| 45 | 141,1 | 136,54 | *78      | 16 | 35 | 1,66 | *88   | 20 | 50 | 3,15 | *88    | 20 | 60 | 4,15  |
| 46 | 144,2 | 139,58 | *78      | 16 | 35 | 1,67 |       |    |    |      |        |    |    |       |
| 48 | 150,2 | 145,64 | *78      | 16 | 35 | 1,75 | *88   | 20 | 50 | 3,43 |        |    |    |       |
| 50 | 156,3 | 151,69 | *78      | 20 | 35 | 1,80 | *88   | 20 | 50 | 3,53 | *88    | 20 | 60 | 4,80  |
| 55 | 171,4 | 166,85 | *78      | 20 | 35 | 1,89 |       |    |    |      |        |    |    |       |
| 57 | 177,5 | 172,91 | *78      | 20 | 35 | 1,96 | *88   | 20 | 50 | 4,16 | *88    | 25 | 60 | 5,80  |
| 60 | 186,6 | 181,99 | *78      | 20 | 35 | 2,03 | *88   | 20 | 50 | 4,45 | *88    | 25 | 60 | 6,21  |
| 76 | 235,1 | 230,49 | *78      | 20 | 35 | 2,67 | *88   | 25 | 50 | 6,23 | *88    | 25 | 60 | 9,26  |
| 95 | 292,7 | 288,08 | *88      | 25 | 40 | 4,06 | *108  | 25 | 50 | 9,76 | *120   | 25 | 60 | 15,18 |







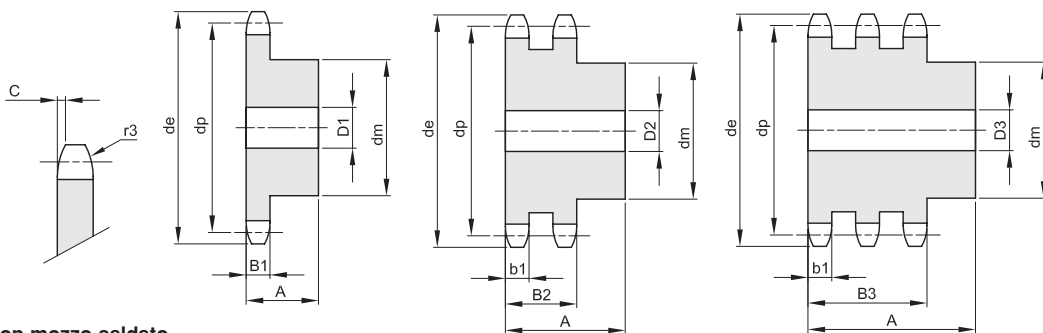
# PIGNONI PER CATENE A RULLI - DIN 8187 - ISO 606

## SPROCKETS FOR ROLLER CHAINS - DIN 8187 - ISO 606

**1/2" x 5/16"**  
**12,7 x 7,75 mm**  
**Rullo 8,51 mm**  
**08B - 1 - 2 - 3**

|     |    |      |    |     |    |
|-----|----|------|----|-----|----|
| B1  | B2 | B3   | b1 | C   | r3 |
| 7,2 | 21 | 34,9 | 7  | 1,3 | 13 |

Materiale C 43 UNI 7847 / \*Materiale Fe - con mozzo saldato

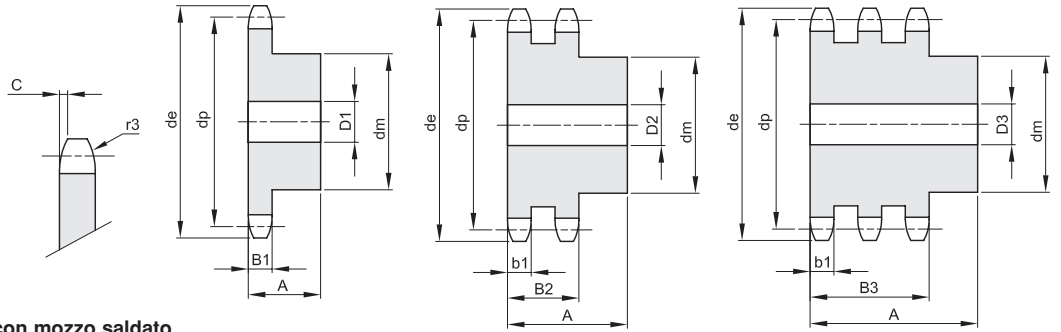


| Z  | de    | dp     | semplici |    |    |      | doppi |    |    |       | tripli |    |    |       |
|----|-------|--------|----------|----|----|------|-------|----|----|-------|--------|----|----|-------|
|    |       |        | dm       | D1 | A  | Kg.  | dm    | D2 | A  | Kg.   | dm     | D3 | A  | Kg.   |
| 8  | 38,0  | 33,18  | 20       | 10 | 25 | 0,06 | 20    | 10 | 32 | 0,09  | 20     | 10 | 46 | 0,13  |
| 9  | 42,0  | 37,13  | 24       | 10 | 25 | 0,09 | 24    | 10 | 32 | 0,13  | 24     | 12 | 46 | 0,18  |
| 10 | 45,9  | 41,10  | 26       | 10 | 25 | 0,12 | 28    | 10 | 32 | 0,18  | 28     | 12 | 46 | 0,24  |
| 11 | 49,9  | 45,07  | 29       | 10 | 25 | 0,15 | 32    | 12 | 35 | 0,24  | 32     | 16 | 50 | 0,31  |
| 12 | 53,9  | 49,07  | 33       | 10 | 28 | 0,21 | 35    | 12 | 35 | 0,30  | 35     | 16 | 50 | 0,39  |
| 13 | 57,9  | 53,06  | 37       | 10 | 28 | 0,26 | 38    | 12 | 35 | 0,36  | 38     | 16 | 50 | 0,49  |
| 14 | 61,9  | 57,07  | 41       | 10 | 28 | 0,32 | 42    | 12 | 35 | 0,44  | 42     | 16 | 50 | 0,60  |
| 15 | 65,9  | 61,09  | 45       | 10 | 28 | 0,38 | 46    | 12 | 35 | 0,52  | 46     | 16 | 50 | 0,72  |
| 16 | 69,9  | 65,10  | 50       | 12 | 28 | 0,46 | 50    | 16 | 38 | 0,63  | 50     | 16 | 50 | 0,85  |
| 17 | 74,0  | 69,11  | 52       | 12 | 28 | 0,51 | 54    | 16 | 38 | 0,73  | 54     | 16 | 50 | 0,99  |
| 18 | 78,0  | 73,14  | 56       | 12 | 28 | 0,59 | 58    | 16 | 38 | 0,85  | 58     | 16 | 50 | 1,14  |
| 19 | 82,0  | 77,16  | 60       | 12 | 28 | 0,67 | 62    | 16 | 38 | 0,97  | 62     | 16 | 50 | 1,30  |
| 20 | 86,0  | 81,19  | 64       | 12 | 28 | 0,76 | 66    | 16 | 38 | 1,10  | 66     | 16 | 50 | 1,47  |
| 21 | 90,1  | 85,22  | 68       | 14 | 28 | 0,85 | 70    | 16 | 40 | 1,29  | 70     | 16 | 55 | 1,79  |
| 22 | 94,1  | 89,24  | 70       | 14 | 28 | 0,91 | 70    | 16 | 40 | 1,37  | 70     | 16 | 55 | 1,93  |
| 23 | 98,1  | 93,27  | 70       | 14 | 28 | 0,95 | 70    | 16 | 40 | 1,46  | 70     | 16 | 55 | 2,08  |
| 24 | 102,1 | 97,29  | 70       | 14 | 28 | 0,98 | 75    | 16 | 40 | 1,64  | 75     | 16 | 55 | 2,32  |
| 25 | 106,2 | 101,33 | 70       | 14 | 28 | 1,01 | 80    | 16 | 40 | 1,82  | 80     | 16 | 55 | 2,57  |
| 26 | 110,2 | 105,36 | 70       | 16 | 30 | 1,09 | 85    | 16 | 40 | 2,02  | 85     | 20 | 55 | 2,79  |
| 27 | 114,2 | 109,40 | 70       | 16 | 30 | 1,13 | 85    | 16 | 40 | 2,12  | 85     | 20 | 55 | 2,96  |
| 28 | 118,3 | 113,42 | 70       | 16 | 30 | 1,17 | 90    | 16 | 40 | 2,34  | 90     | 20 | 55 | 3,25  |
| 29 | 122,3 | 117,46 | 80       | 16 | 30 | 1,42 | 95    | 16 | 40 | 2,56  | 95     | 20 | 55 | 3,55  |
| 30 | 126,3 | 121,50 | 80       | 16 | 30 | 1,46 | 100   | 16 | 40 | 2,79  | 100    | 20 | 55 | 3,86  |
| 31 | 130,4 | 125,54 | 90       | 16 | 30 | 1,74 | 100   | 20 | 40 | 2,87  | 110    | 20 | 55 | 4,32  |
| 32 | 134,4 | 129,56 | 90       | 16 | 30 | 1,78 | 100   | 20 | 40 | 3,00  | 110    | 20 | 55 | 4,53  |
| 33 | 138,4 | 133,60 | 90       | 16 | 30 | 1,83 | 100   | 20 | 40 | 3,13  | 110    | 20 | 55 | 4,74  |
| 34 | 142,5 | 137,64 | 90       | 16 | 30 | 1,88 | 100   | 20 | 40 | 3,26  | 110    | 20 | 55 | 4,97  |
| 35 | 146,5 | 141,68 | 90       | 16 | 30 | 1,93 | 100   | 20 | 40 | 3,40  | 110    | 20 | 55 | 5,20  |
| 36 | 150,6 | 145,72 | 90       | 16 | 35 | 2,22 | 100   | 20 | 40 | 3,54  | 120    | 25 | 55 | 5,64  |
| 37 | 154,6 | 149,76 | 90       | 16 | 35 | 2,27 | 100   | 20 | 40 | 3,69  | 120    | 25 | 55 | 5,88  |
| 38 | 158,6 | 153,80 | 90       | 16 | 35 | 2,32 | 100   | 20 | 40 | 3,84  | 120    | 25 | 55 | 6,14  |
| 39 | 162,7 | 157,83 | 90       | 16 | 35 | 2,38 | 100   | 20 | 40 | 4,00  | 120    | 25 | 55 | 6,40  |
| 40 | 166,7 | 161,87 | 90       | 16 | 35 | 2,43 | 100   | 20 | 40 | 4,15  | 120    | 25 | 55 | 6,66  |
| 42 | 176,5 | 169,95 | *88      | 20 | 42 | 2,77 | *108  | 20 | 55 | 5,67  |        |    |    |       |
| 45 | 188,6 | 182,07 | *88      | 20 | 42 | 3,00 | *108  | 20 | 55 | 6,26  | *120   | 25 | 68 | 9,12  |
| 46 | 192,6 | 186,10 | *88      | 20 | 42 | 3,06 | *108  | 20 | 55 | 6,39  |        |    |    |       |
| 48 | 200,7 | 194,18 | *88      | 20 | 42 | 3,16 | *108  | 20 | 55 | 6,75  |        |    |    |       |
| 50 | 208,8 | 202,26 | *88      | 20 | 42 | 3,30 | *108  | 20 | 55 | 7,17  | *120   | 25 | 68 | 10,74 |
| 55 | 229,0 | 222,46 | *88      | 20 | 42 | 3,62 |       |    |    |       |        |    |    |       |
| 57 | 237,1 | 230,54 | *88      | 20 | 42 | 3,85 | *108  | 25 | 55 | 8,65  | *120   | 25 | 68 | 13,26 |
| 60 | 249,2 | 242,66 | *88      | 20 | 42 | 4,08 | *108  | 25 | 55 | 9,35  | *120   | 25 | 68 | 14,47 |
| 76 | 313,9 | 307,33 | *88      | 25 | 42 | 5,56 | *108  | 25 | 55 | 13,30 | *120   | 25 | 68 | 21,78 |
| 95 | 390,7 | 384,11 | *108     | 25 | 42 | 8,56 | *120  | 25 | 55 | 21,13 | *136   | 25 | 68 | 34,00 |

# PIGNONI PER CATENE A RULLI - DIN 8187 - ISO 606

## SPROCKETS FOR ROLLER CHAINS - DIN 8187 - ISO 606

**5/8" x 3/8"**  
**15,875 x 9,65 mm**  
**Rullo 10,16 mm**  
**10B - 1 - 2 - 3**



|     |      |      |    |     |    |
|-----|------|------|----|-----|----|
| B1  | B2   | B3   | b1 | C   | r3 |
| 9,1 | 25,5 | 42,1 | 9  | 1,6 | 16 |

Materiale C 43 UNI 7847 / \*Materiale Fe - con mozzo saldato

| Z  | de    | dp     | semplici |    |    |       | doppi |    |    |       | tripli |    |    |       |
|----|-------|--------|----------|----|----|-------|-------|----|----|-------|--------|----|----|-------|
|    |       |        | dm       | D1 | A  | Kg.   | dm    | D2 | A  | Kg.   | dm     | D3 | A  | Kg.   |
| 8  | 48,4  | 41,48  | 25       | 10 | 25 | 0,12  | 25    | 12 | 40 | 0,19  | 25     | 12 | 55 | 0,27  |
| 9  | 53,3  | 46,42  | 30       | 10 | 25 | 0,16  | 30    | 12 | 40 | 0,27  | 30     | 12 | 55 | 0,38  |
| 10 | 58,3  | 51,37  | 35       | 10 | 25 | 0,22  | 35    | 12 | 40 | 0,36  | 35     | 16 | 55 | 0,47  |
| 11 | 63,2  | 56,34  | 37       | 12 | 30 | 0,29  | 39    | 16 | 40 | 0,43  | 39     | 16 | 55 | 0,61  |
| 12 | 68,2  | 61,34  | 42       | 12 | 30 | 0,37  | 44    | 16 | 40 | 0,55  | 44     | 16 | 55 | 0,78  |
| 13 | 73,2  | 66,32  | 47       | 12 | 30 | 0,46  | 49    | 16 | 40 | 0,68  | 49     | 16 | 55 | 0,96  |
| 14 | 78,2  | 71,34  | 52       | 12 | 30 | 0,56  | 54    | 16 | 40 | 0,82  | 54     | 16 | 55 | 1,15  |
| 15 | 83,2  | 76,36  | 57       | 12 | 30 | 0,67  | 59    | 16 | 40 | 0,97  | 59     | 16 | 55 | 1,37  |
| 16 | 88,3  | 81,37  | 60       | 12 | 30 | 0,76  | 64    | 16 | 45 | 1,26  | 64     | 16 | 60 | 1,72  |
| 17 | 93,3  | 86,39  | 60       | 12 | 30 | 0,88  | 69    | 16 | 45 | 1,46  | 69     | 16 | 60 | 1,99  |
| 18 | 98,3  | 91,42  | 70       | 14 | 30 | 1,01  | 74    | 16 | 45 | 1,67  | 74     | 16 | 60 | 2,27  |
| 19 | 103,3 | 96,45  | 70       | 14 | 30 | 1,15  | 79    | 16 | 45 | 1,90  | 79     | 16 | 60 | 2,58  |
| 20 | 108,4 | 101,49 | 75       | 14 | 30 | 1,21  | 84    | 16 | 45 | 2,14  | 84     | 16 | 60 | 2,91  |
| 21 | 113,4 | 106,52 | 75       | 16 | 30 | 1,35  | 85    | 16 | 45 | 2,27  | 85     | 20 | 60 | 3,12  |
| 22 | 118,4 | 111,55 | 80       | 16 | 30 | 1,41  | 90    | 16 | 45 | 2,54  | 90     | 20 | 60 | 3,48  |
| 23 | 123,5 | 116,58 | 80       | 16 | 30 | 1,47  | 95    | 16 | 45 | 2,82  | 95     | 20 | 60 | 3,86  |
| 24 | 128,5 | 121,62 | 80       | 16 | 30 | 1,54  | 100   | 16 | 45 | 3,11  | 100    | 20 | 60 | 4,25  |
| 25 | 133,6 | 126,66 | 80       | 16 | 30 | 1,60  | 105   | 16 | 45 | 3,15  | 105    | 20 | 60 | 4,67  |
| 26 | 138,6 | 131,70 | 85       | 20 | 35 | 1,96  | 110   | 20 | 45 | 3,74  | 110    | 20 | 60 | 5,10  |
| 27 | 143,6 | 136,75 | 85       | 20 | 35 | 2,04  | 110   | 20 | 45 | 3,94  | 110    | 20 | 60 | 5,43  |
| 28 | 148,7 | 141,78 | 90       | 20 | 35 | 2,25  | 115   | 20 | 45 | 4,28  | 115    | 20 | 60 | 5,90  |
| 29 | 153,7 | 146,83 | 90       | 20 | 35 | 2,33  | 115   | 20 | 45 | 4,50  | 115    | 20 | 60 | 6,25  |
| 30 | 158,8 | 151,87 | 90       | 20 | 35 | 2,41  | 120   | 20 | 45 | 4,87  | 120    | 20 | 60 | 6,65  |
| 31 | 163,8 | 156,92 | 95       | 20 | 35 | 2,64  | 120   | 20 | 45 | 5,10  | 120    | 20 | 60 | 7,18  |
| 32 | 168,9 | 161,95 | 95       | 20 | 35 | 2,73  | 120   | 20 | 45 | 5,34  | 120    | 20 | 60 | 7,56  |
| 33 | 173,9 | 167,00 | 95       | 20 | 35 | 2,82  | 120   | 20 | 45 | 5,59  | 120    | 20 | 60 | 7,97  |
| 34 | 178,9 | 172,05 | 95       | 20 | 35 | 2,92  | 120   | 20 | 45 | 5,84  | 120    | 20 | 60 | 8,36  |
| 35 | 184,0 | 177,10 | 95       | 20 | 35 | 3,01  | 120   | 20 | 45 | 6,11  | 120    | 20 | 60 | 8,74  |
| 36 | 189,0 | 182,15 | 100      | 20 | 35 | 3,27  | 120   | 20 | 45 | 6,38  | 120    | 25 | 60 | 9,15  |
| 37 | 194,1 | 187,20 | 100      | 20 | 35 | 3,37  | 120   | 20 | 45 | 6,66  | 120    | 25 | 60 | 9,61  |
| 38 | 199,1 | 192,24 | 100      | 20 | 35 | 3,47  | 120   | 20 | 45 | 6,95  | 120    | 25 | 60 | 10,08 |
| 39 | 204,2 | 197,29 | 100      | 20 | 35 | 3,58  | 120   | 20 | 45 | 7,25  | 120    | 25 | 60 | 10,57 |
| 40 | 209,2 | 202,34 | 100      | 20 | 35 | 3,69  | 120   | 20 | 45 | 7,55  | 120    | 25 | 60 | 11,07 |
| 42 | 220,8 | 212,44 | *108     | 20 | 43 | 4,73  | *120  | 25 | 59 | 9,35  |        |    |    |       |
| 45 | 236,0 | 227,58 | *108     | 20 | 43 | 5,09  | *120  | 25 | 59 | 10,32 | *136   | 25 | 74 | 15,70 |
| 46 | 241,0 | 236,63 | *108     | 20 | 43 | 5,19  | *120  | 25 | 59 | 10,67 |        |    |    |       |
| 48 | 251,1 | 242,73 | *108     | 20 | 43 | 5,43  | *120  | 25 | 59 | 11,40 |        |    |    |       |
| 50 | 261,2 | 252,82 | *108     | 20 | 43 | 5,70  | *120  | 25 | 59 | 12,11 | *136   | 25 | 74 | 18,83 |
| 55 | 286,5 | 278,08 | *108     | 20 | 43 | 6,40  |       |    |    |       |        |    |    |       |
| 57 | 296,6 | 288,18 | *108     | 25 | 43 | 6,66  | *120  | 25 | 59 | 15,74 | *136   | 25 | 74 | 23,40 |
| 60 | 311,7 | 303,32 | *108     | 25 | 43 | 7,15  | *120  | 25 | 59 | 16,40 | *136   | 25 | 74 | 25,80 |
| 76 | 392,5 | 384,16 | *108     | 25 | 43 | 10,28 | *120  | 25 | 59 | 24,93 | *145   | 30 | 75 | 40,25 |
| 95 | 488,5 | 480,14 | *118     | 30 | 59 | 16,36 | *145  | 30 | 59 | 38,90 | *145   | 30 | 75 | 55,35 |

# PIGNONI PER CATENE A RULLI - DIN 8187 - ISO 606

## SPROCKETS FOR ROLLER CHAINS - DIN 8187 - ISO 606

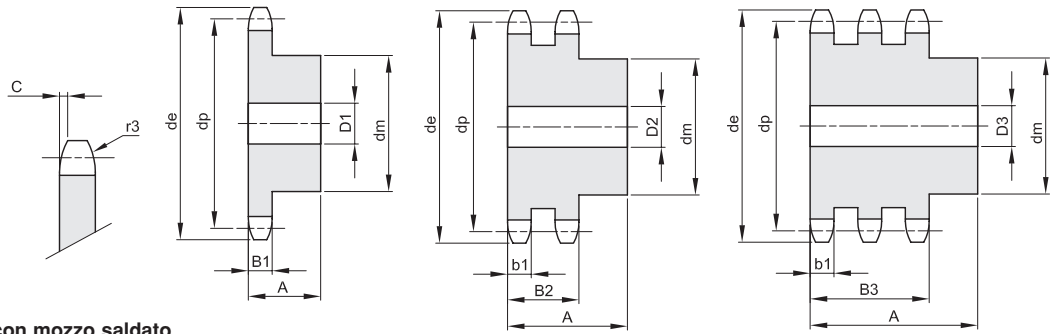
**3/4" x 7/16"**

**19,05 x 11,68 mm**

**Rullo 12,07 mm**

**12B - 1 - 2 - 3**

|      |      |      |      |   |    |
|------|------|------|------|---|----|
| B1   | B2   | B3   | b1   | C | r3 |
| 11,1 | 30,3 | 49,8 | 10,8 | 2 | 19 |



Materiale C 43 UNI 7847 / \*Materiale Fe - con mozzo saldato

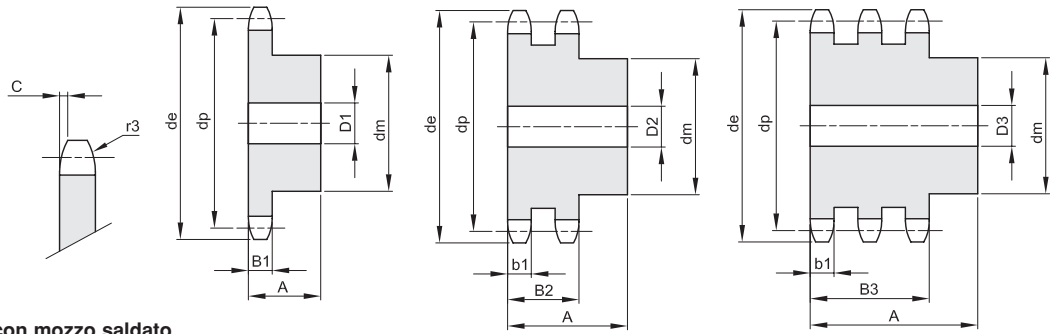
| Z  | de    | dp     | semplici |    |    |       | doppi |    |    |       | tripli |    |    |        |
|----|-------|--------|----------|----|----|-------|-------|----|----|-------|--------|----|----|--------|
|    |       |        | dm       | D1 | A  | Kg.   | dm    | D2 | A  | Kg.   | dm     | D3 | A  | Kg.    |
| 8  | 58,0  | 49,78  | 31       | 12 | 30 | 0,21  | 31    | 12 | 45 | 0,31  | 31     | 16 | 65 | 0,45   |
| 9  | 63,9  | 55,70  | 37       | 12 | 30 | 0,29  | 37    | 12 | 45 | 0,44  | 37     | 16 | 65 | 0,64   |
| 10 | 69,8  | 61,64  | 42       | 12 | 30 | 0,38  | 42    | 12 | 45 | 0,59  | 42     | 16 | 65 | 0,86   |
| 11 | 75,8  | 67,61  | 46       | 16 | 35 | 0,51  | 47    | 16 | 50 | 0,81  | 47     | 20 | 70 | 1,09   |
| 12 | 81,8  | 73,60  | 52       | 16 | 35 | 0,65  | 53    | 16 | 50 | 1,02  | 53     | 20 | 70 | 1,39   |
| 13 | 87,8  | 79,59  | 58       | 16 | 35 | 0,80  | 59    | 16 | 50 | 1,25  | 59     | 20 | 70 | 1,72   |
| 14 | 93,8  | 85,61  | 64       | 16 | 35 | 0,97  | 65    | 16 | 50 | 1,46  | 65     | 20 | 70 | 2,08   |
| 15 | 99,8  | 91,63  | 70       | 16 | 35 | 1,16  | 71    | 16 | 50 | 1,74  | 71     | 20 | 70 | 2,47   |
| 16 | 105,8 | 97,65  | 75       | 16 | 35 | 1,34  | 77    | 20 | 50 | 2,03  | 77     | 20 | 70 | 2,89   |
| 17 | 111,9 | 103,67 | 80       | 16 | 35 | 1,53  | 83    | 20 | 50 | 2,36  | 83     | 20 | 70 | 3,34   |
| 18 | 117,9 | 109,71 | 80       | 16 | 35 | 1,62  | 89    | 20 | 50 | 2,70  | 89     | 20 | 70 | 3,83   |
| 19 | 123,9 | 115,75 | 80       | 16 | 35 | 1,70  | 95    | 20 | 50 | 3,07  | 95     | 20 | 70 | 4,35   |
| 20 | 130,0 | 121,78 | 80       | 16 | 35 | 1,80  | 100   | 20 | 50 | 3,43  | 100    | 20 | 70 | 4,87   |
| 21 | 136,0 | 127,82 | 90       | 20 | 40 | 2,35  | 100   | 20 | 50 | 3,69  | 100    | 20 | 70 | 5,20   |
| 22 | 142,0 | 133,86 | 90       | 20 | 40 | 2,46  | 100   | 20 | 50 | 3,97  | 100    | 20 | 70 | 5,65   |
| 23 | 148,1 | 139,90 | 90       | 20 | 40 | 2,56  | 110   | 20 | 50 | 4,51  | 110    | 20 | 70 | 6,38   |
| 24 | 154,1 | 145,94 | 90       | 20 | 40 | 2,68  | 110   | 20 | 50 | 4,81  | 110    | 20 | 70 | 6,87   |
| 25 | 160,2 | 152,00 | 90       | 20 | 40 | 2,80  | 120   | 20 | 50 | 5,41  | 120    | 20 | 70 | 7,77   |
| 26 | 166,2 | 158,04 | 95       | 20 | 40 | 3,08  | 120   | 20 | 50 | 5,73  | 120    | 20 | 70 | 8,21   |
| 27 | 172,3 | 164,09 | 95       | 20 | 40 | 3,21  | 120   | 20 | 50 | 6,08  | 120    | 20 | 70 | 8,77   |
| 28 | 178,3 | 170,13 | 95       | 20 | 40 | 3,34  | 120   | 20 | 50 | 6,43  | 120    | 20 | 70 | 9,35   |
| 29 | 184,4 | 176,19 | 95       | 20 | 40 | 3,48  | 120   | 20 | 50 | 6,80  | 120    | 20 | 70 | 9,96   |
| 30 | 190,4 | 182,25 | 95       | 20 | 40 | 3,63  | 120   | 20 | 50 | 7,19  | 120    | 20 | 70 | 10,59  |
| 31 | 196,5 | 188,31 | 95       | 20 | 40 | 3,78  | 120   | 20 | 50 | 7,59  | 130    | 25 | 70 | 11,55  |
| 32 | 202,5 | 194,35 | 95       | 20 | 40 | 3,93  | 120   | 20 | 50 | 8,00  | 130    | 25 | 70 | 12,22  |
| 33 | 208,6 | 200,40 | 95       | 20 | 40 | 4,09  | 120   | 20 | 50 | 8,42  | 130    | 25 | 70 | 12,92  |
| 34 | 214,6 | 206,46 | 95       | 20 | 40 | 4,25  | 120   | 20 | 50 | 8,86  | 130    | 25 | 70 | 13,64  |
| 35 | 220,7 | 212,52 | 95       | 20 | 40 | 4,42  | 120   | 20 | 50 | 9,31  | 130    | 25 | 70 | 14,38  |
| 36 | 226,8 | 218,58 | 100      | 20 | 40 | 4,71  | 120   | 25 | 50 | 9,71  | 130    | 25 | 70 | 15,14  |
| 37 | 232,8 | 224,64 | 100      | 20 | 40 | 4,89  | 120   | 25 | 50 | 10,19 | 130    | 25 | 70 | 15,93  |
| 38 | 238,9 | 230,69 | 100      | 20 | 40 | 5,07  | 120   | 25 | 50 | 10,78 | 130    | 25 | 70 | 16,73  |
| 39 | 244,9 | 236,75 | 100      | 20 | 40 | 5,26  | 120   | 25 | 50 | 11,19 | 130    | 25 | 70 | 17,57  |
| 40 | 251,0 | 242,81 | 100      | 20 | 40 | 5,46  | 120   | 25 | 50 | 11,71 | 130    | 25 | 70 | 18,42  |
| 42 | 265,0 | 254,93 | *118     | 25 | 61 | 8,14  | *136  | 25 | 62 | 14,51 |        |    |    |        |
| 45 | 283,2 | 273,10 | *118     | 25 | 61 | 8,85  | *136  | 25 | 62 | 16,35 | *140   | 25 | 72 | 23,55  |
| 46 | 289,2 | 279,16 | *118     | 25 | 61 | 9,22  | *136  | 25 | 62 | 16,80 |        |    |    |        |
| 48 | 301,4 | 291,27 | *118     | 25 | 61 | 9,67  | *136  | 25 | 62 | 18,18 |        |    |    |        |
| 50 | 313,5 | 303,39 | *118     | 25 | 61 | 10,15 | *136  | 25 | 62 | 19,44 | *140   | 25 | 72 | 28,73  |
| 55 | 343,8 | 333,70 | *118     | 25 | 61 | 11,29 |       |    |    |       |        |    |    |        |
| 57 | 355,9 | 345,81 | *118     | 25 | 61 | 11,85 | *136  | 25 | 62 | 24,43 | *140   | 30 | 75 | 37,16  |
| 60 | 374,1 | 363,99 | *118     | 25 | 61 | 12,71 | *136  | 25 | 62 | 26,77 | *140   | 30 | 75 | 41,01  |
| 76 | 471,1 | 460,99 | *118     | 30 | 61 | 18,02 | *145  | 30 | 63 | 41,88 | *150   | 30 | 75 | 65,41  |
| 95 | 586,2 | 576,17 | *133     | 30 | 62 | 27,45 | *145  | 30 | 63 | 63,79 | *150   | 30 | 75 | 101,37 |

# PIGNONI PER CATENE A RULLI - DIN 8187 - ISO 606

## SPROCKETS FOR ROLLER CHAINS - DIN 8187 - ISO 606

**1" x 17,02 mm**  
**25,4 x 17,02 mm**  
**Rullo 15,88 mm**  
**16B - 1 - 2 - 3**

|      |      |      |      |     |    |
|------|------|------|------|-----|----|
| B1   | B2   | B3   | b1   | C   | r3 |
| 16,2 | 47,7 | 79,6 | 15,8 | 2,5 | 26 |



Materiale C 43 UNI 7847 / \*Materiale Fe - con mozzo saldato

| Z  | de    | dp     | semplici |    |    |       | doppi |    |     |        | tripli |    |     |        |
|----|-------|--------|----------|----|----|-------|-------|----|-----|--------|--------|----|-----|--------|
|    |       |        | dm       | D1 | A  | Kg.   | dm    | D2 | A   | Kg.    | dm     | D3 | A   | Kg.    |
| 8  | 77,9  | 66,37  | 42       | 16 | 35 | 0,47  | 42    | 20 | 65  | 0,81   | 42     | 20 | 95  | 1,19   |
| 9  | 85,8  | 74,27  | 50       | 16 | 35 | 0,66  | 50    | 20 | 65  | 1,15   | 50     | 20 | 95  | 1,68   |
| 10 | 93,8  | 82,19  | 55       | 16 | 35 | 0,83  | 56    | 20 | 65  | 1,52   | 56     | 20 | 95  | 2,24   |
| 11 | 101,7 | 90,14  | 61       | 16 | 40 | 1,14  | 64    | 20 | 70  | 2,08   | 64     | 25 | 100 | 2,86   |
| 12 | 109,7 | 98,14  | 69       | 16 | 40 | 1,43  | 72    | 20 | 70  | 2,60   | 72     | 25 | 100 | 3,62   |
| 13 | 117,7 | 106,12 | 78       | 16 | 40 | 1,77  | 80    | 20 | 70  | 3,18   | 80     | 25 | 100 | 4,45   |
| 14 | 125,7 | 114,15 | 84       | 16 | 40 | 2,08  | 88    | 20 | 70  | 3,82   | 88     | 25 | 100 | 5,37   |
| 15 | 133,7 | 122,17 | 92       | 16 | 40 | 2,46  | 96    | 20 | 70  | 4,51   | 96     | 25 | 100 | 6,37   |
| 16 | 141,8 | 130,20 | 100      | 20 | 45 | 3,14  | 104   | 20 | 70  | 5,17   | 104    | 25 | 100 | 7,45   |
| 17 | 149,8 | 138,22 | 100      | 20 | 45 | 3,33  | 112   | 20 | 70  | 5,98   | 112    | 25 | 100 | 8,60   |
| 18 | 157,8 | 146,28 | 100      | 20 | 45 | 3,56  | 120   | 20 | 70  | 6,84   | 120    | 25 | 100 | 9,84   |
| 19 | 165,9 | 154,33 | 100      | 20 | 45 | 3,78  | 128   | 20 | 70  | 7,76   | 128    | 25 | 100 | 11,16  |
| 20 | 173,9 | 162,38 | 100      | 20 | 45 | 4,03  | 130   | 20 | 70  | 8,52   | 130    | 25 | 100 | 12,36  |
| 21 | 182,0 | 170,43 | 110      | 20 | 50 | 5,01  | 130   | 25 | 70  | 9,24   | 130    | 25 | 100 | 13,56  |
| 22 | 190,1 | 178,48 | 110      | 20 | 50 | 5,28  | 130   | 25 | 70  | 10,00  | 130    | 25 | 100 | 14,82  |
| 23 | 198,1 | 186,53 | 110      | 20 | 50 | 5,56  | 130   | 25 | 70  | 10,80  | 130    | 25 | 100 | 16,15  |
| 24 | 206,2 | 194,59 | 110      | 20 | 50 | 5,86  | 130   | 25 | 70  | 11,64  | 130    | 25 | 100 | 17,53  |
| 25 | 214,2 | 202,66 | 110      | 20 | 50 | 6,16  | 130   | 25 | 70  | 12,52  | 130    | 25 | 100 | 18,99  |
| 26 | 222,3 | 210,72 | 120      | 20 | 50 | 6,96  | 130   | 25 | 70  | 13,43  | 130    | 30 | 100 | 20,34  |
| 27 | 230,4 | 218,79 | 120      | 20 | 50 | 7,30  | 130   | 25 | 70  | 14,38  | 130    | 30 | 100 | 21,92  |
| 28 | 238,4 | 226,85 | 120      | 20 | 50 | 7,64  | 130   | 25 | 70  | 15,38  | 130    | 30 | 100 | 23,57  |
| 29 | 246,5 | 234,92 | 120      | 20 | 50 | 8,00  | 130   | 25 | 70  | 16,41  | 130    | 30 | 100 | 25,27  |
| 30 | 254,6 | 243,00 | 120      | 20 | 50 | 8,38  | 130   | 25 | 70  | 17,48  | 130    | 30 | 100 | 27,05  |
| 31 | 262,6 | 251,08 | 120      | 25 | 50 | 8,69  | 140   | 25 | 70  | 18,96  | 140    | 30 | 100 | 29,23  |
| 32 | 270,7 | 259,13 | 120      | 25 | 50 | 9,09  | 140   | 25 | 70  | 20,10  | 140    | 30 | 100 | 31,13  |
| 33 | 278,8 | 267,21 | 120      | 25 | 50 | 9,50  | 140   | 25 | 70  | 21,29  | 140    | 30 | 100 | 33,10  |
| 34 | 286,9 | 275,28 | 120      | 25 | 50 | 9,93  | 140   | 25 | 70  | 22,21  | 140    | 30 | 100 | 35,13  |
| 35 | 294,9 | 283,36 | 120      | 25 | 50 | 10,36 | 140   | 25 | 70  | 23,77  | 140    | 30 | 100 | 37,23  |
| 36 | 303,0 | 291,44 | 120      | 25 | 50 | 10,81 | 140   | 25 | 70  | 25,07  | 140    | 30 | 100 | 39,39  |
| 37 | 311,1 | 299,51 | 120      | 25 | 50 | 11,28 | 140   | 25 | 70  | 26,41  |        |    |     |        |
| 38 | 319,2 | 307,59 | 120      | 25 | 50 | 11,76 | 140   | 25 | 70  | 27,79  | 140    | 30 | 100 | 43,90  |
| 39 | 327,2 | 315,67 | 120      | 25 | 50 | 12,25 | 140   | 25 | 70  | 29,20  |        |    |     |        |
| 40 | 335,3 | 323,73 | 120      | 25 | 50 | 12,75 | 140   | 25 | 70  | 30,65  | 140    | 30 | 100 | 48,67  |
| 42 | 353,7 | 339,90 | *133     | 25 | 68 | 16,54 | *140  | 25 | 70  | 33,63  |        |    |     |        |
| 45 | 377,9 | 364,12 | *133     | 25 | 68 | 18,15 | *140  | 25 | 70  | 38,44  | *160   | 30 | 110 | 63,94  |
| 46 | 386,0 | 372,21 | *133     | 25 | 68 | 18,69 | *140  | 25 | 70  | 40,13  |        |    |     |        |
| 48 | 402,1 | 388,36 | *133     | 25 | 68 | 19,86 | *140  | 25 | 70  | 43,61  |        |    |     |        |
| 50 | 418,3 | 404,52 | *133     | 25 | 68 | 20,89 | *140  | 25 | 70  | 47,25  | *160   | 30 | 110 | 78,58  |
| 57 | 474,9 | 461,07 | *133     | 30 | 68 | 25,52 | *160  | 40 | 82  | 63,45  | *180   | 40 | 112 | 103,03 |
| 60 | 499,1 | 485,32 | *133     | 30 | 68 | 27,76 | *160  | 40 | 82  | 70,00  |        |    |     |        |
| 76 | 628,4 | 614,65 | *145     | 30 | 68 | 42,97 | *160  | 40 | 82  | 110,79 | *180   | 40 | 112 | 181,86 |
| 95 | 782,0 | 768,22 | *160     | 30 | 78 | 63,92 | *180  | 40 | 109 | 178,48 | *180   | 40 | 112 | 283,85 |

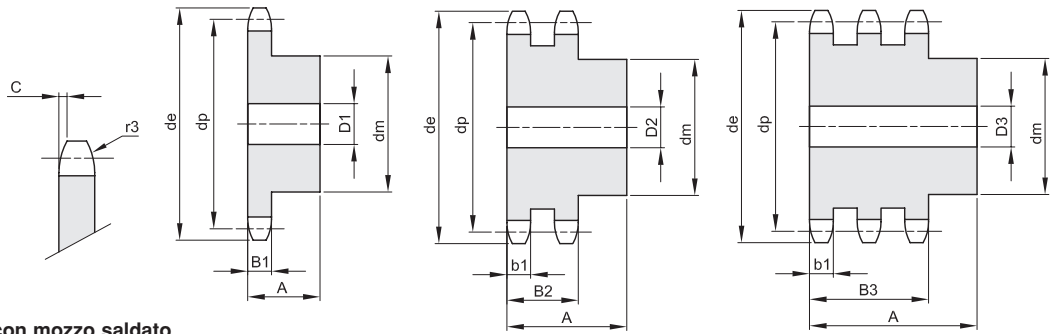
# PIGNONI PER CATENE A RULLI - DIN 8187 - ISO 606

## SPROCKETS FOR ROLLER CHAINS - DIN 8187 - ISO 606

**1"1/4 x 3/4"**  
**31,75 x 19,05 mm**  
**Rullo 19,05 mm**  
**20B - 1 - 2 - 3**

|      |      |    |      |     |    |
|------|------|----|------|-----|----|
| B1   | B2   | B3 | b1   | C   | r3 |
| 18,5 | 54,6 | 91 | 18,2 | 3,5 | 32 |

Materiale C 43 UNI 7847 / \*Materiale Fe - con mozzo saldato



| Z  | de    | dp     | semplici |    |    |        | doppi |    |     |        | tripli |    |     |        |
|----|-------|--------|----------|----|----|--------|-------|----|-----|--------|--------|----|-----|--------|
|    |       |        | dm       | D1 | A  | Kg.    | dm    | D2 | A   | Kg.    | dm     | D3 | A   | Kg.    |
| 8  | 96,0  | 82,96  | 53       | 20 | 40 | 0,85   | 53    | 20 | 75  | 1,58   | 53     | 25 | 110 | 2,15   |
| 9  | 106,5 | 92,84  | 63       | 20 | 40 | 1,19   | 63    | 20 | 75  | 2,19   | 63     | 25 | 110 | 3,05   |
| 10 | 117,0 | 102,74 | 70       | 20 | 40 | 1,51   | 70    | 20 | 75  | 2,85   | 70     | 25 | 110 | 4,04   |
| 11 | 127,0 | 112,68 | 77       | 20 | 45 | 2,04   | 80    | 25 | 80  | 3,72   | 80     | 30 | 115 | 5,19   |
| 12 | 137,0 | 122,68 | 88       | 20 | 45 | 2,58   | 90    | 25 | 80  | 4,66   | 90     | 30 | 115 | 6,55   |
| 13 | 147,5 | 132,65 | 98       | 20 | 45 | 3,15   | 100   | 25 | 80  | 5,70   | 100    | 30 | 115 | 8,06   |
| 14 | 157,6 | 142,68 | 108      | 20 | 45 | 3,78   | 110   | 25 | 80  | 6,84   | 110    | 30 | 115 | 9,71   |
| 15 | 167,7 | 152,72 | 118      | 20 | 45 | 4,47   | 120   | 25 | 80  | 8,08   | 120    | 30 | 115 | 11,50  |
| 16 | 177,7 | 162,75 | 120      | 25 | 50 | 5,25   | 120   | 30 | 80  | 8,90   | 120    | 30 | 115 | 13,06  |
| 17 | 187,7 | 172,78 | 120      | 25 | 50 | 5,61   | 120   | 30 | 80  | 9,92   | 120    | 30 | 115 | 14,65  |
| 18 | 197,8 | 182,85 | 120      | 25 | 50 | 6,00   | 120   | 30 | 80  | 11,00  | 120    | 30 | 115 | 16,54  |
| 19 | 207,9 | 192,91 | 120      | 25 | 50 | 6,40   | 120   | 30 | 80  | 12,16  | 120    | 30 | 115 | 18,45  |
| 20 | 217,9 | 202,98 | 120      | 25 | 50 | 6,84   | 120   | 30 | 80  | 13,38  | 120    | 30 | 115 | 20,48  |
| 21 | 228,0 | 213,04 | 140      | 25 | 55 | 8,79   | 140   | 30 | 80  | 15,49  | 140    | 30 | 115 | 23,38  |
| 22 | 238,1 | 223,11 | 140      | 25 | 55 | 9,27   | 140   | 30 | 80  | 16,86  | 140    | 30 | 115 | 25,64  |
| 23 | 248,2 | 233,17 | 140      | 25 | 55 | 9,77   | 140   | 30 | 80  | 18,29  | 140    | 30 | 115 | 28,00  |
| 24 | 258,3 | 243,23 | 140      | 25 | 55 | 10,30  | 140   | 30 | 80  | 19,79  | 140    | 30 | 115 | 30,49  |
| 25 | 268,4 | 253,33 | 140      | 25 | 55 | 10,85  | 140   | 30 | 80  | 21,36  | 140    | 30 | 115 | 33,09  |
| 26 | 278,4 | 263,40 | 150      | 30 | 55 | 12,07  | 150   | 30 | 80  | 23,45  | 150    | 30 | 115 | 36,23  |
| 27 | 288,5 | 273,48 | 150      | 30 | 55 | 12,67  | 150   | 30 | 80  | 25,15  | 150    | 30 | 115 | 39,06  |
| 28 | 298,5 | 283,56 | 150      | 30 | 55 | 13,29  | 150   | 30 | 80  | 26,93  | 150    | 30 | 115 | 42,00  |
| 29 | 308,6 | 293,65 | 150      | 30 | 55 | 13,93  | 150   | 30 | 80  | 28,77  |        |    |     |        |
| 30 | 318,7 | 303,75 | 150      | 30 | 55 | 14,60  | 150   | 30 | 80  | 30,69  | 150    | 30 | 115 | 48,23  |
| 31 | 328,8 | 313,85 | *150     | 30 | 55 | 15,28  | *150  | 30 | 80  | 32,67  |        |    |     |        |
| 32 | 338,9 | 323,91 | *150     | 30 | 55 | 16,00  | *150  | 30 | 80  | 34,72  | *150   | 30 | 115 | 54,91  |
| 33 | 349,0 | 334,01 | *150     | 30 | 55 | 16,73  |       |    |     |        |        |    |     |        |
| 34 | 359,1 | 344,10 | *150     | 30 | 55 | 17,49  | *150  | 30 | 80  | 39,03  | *150   | 30 | 115 | 62,06  |
| 35 | 369,2 | 354,20 | *150     | 30 | 55 | 18,27  | *150  | 30 | 80  | 41,28  | *150   | 30 | 115 | 65,80  |
| 36 | 379,2 | 364,30 | *150     | 30 | 55 | 19,08  | *150  | 30 | 80  | 43,61  | *150   | 30 | 115 | 69,66  |
| 37 | 389,3 | 374,39 | *150     | 30 | 55 | 19,91  |       |    |     |        |        |    |     |        |
| 38 | 399,4 | 384,49 | *150     | 30 | 55 | 20,76  | *150  | 30 | 80  | 48,46  | *150   | 30 | 115 | 77,72  |
| 39 | 409,5 | 394,59 | *150     | 30 | 55 | 21,73  |       |    |     |        |        |    |     |        |
| 40 | 419,6 | 404,66 | *150     | 30 | 55 | 22,53  | *150  | 30 | 80  | 53,60  | *150   | 30 | 115 | 86,24  |
| 42 | 440,8 | 424,88 | *160     | 30 | 80 | 28,84  |       |    |     |        |        |    |     |        |
| 45 | 471,1 | 455,17 | *160     | 30 | 80 | 31,79  | *160  | 30 | 101 | 71,32  | *160   | 40 | 121 | 110,41 |
| 46 | 481,2 | 465,26 | *160     | 30 | 80 | 32,83  | *160  | 30 | 101 | 74,34  |        |    |     |        |
| 48 | 501,4 | 485,46 | *160     | 30 | 80 | 35,00  |       |    |     |        |        |    |     |        |
| 50 | 521,6 | 505,65 | *160     | 30 | 80 | 37,21  | *160  | 30 | 101 | 87,08  | *160   | 40 | 121 | 136,59 |
| 57 | 592,3 | 576,36 | *160     | 30 | 80 | 45,79  | *180  | 40 | 116 | 116,28 | *200   | 40 | 123 | 181,21 |
| 60 | 622,6 | 606,65 | *160     | 30 | 80 | 49,83  |       |    |     |        |        |    |     |        |
| 76 | 784,3 | 768,32 | *160     | 30 | 80 | 75,81  | *180  | 40 | 116 | 200,96 | *200   | 40 | 123 | 322,03 |
| 95 | 976,2 | 960,28 | *168     | 30 | 93 | 114,96 | *200  | 40 | 116 | 313,59 |        |    |     |        |

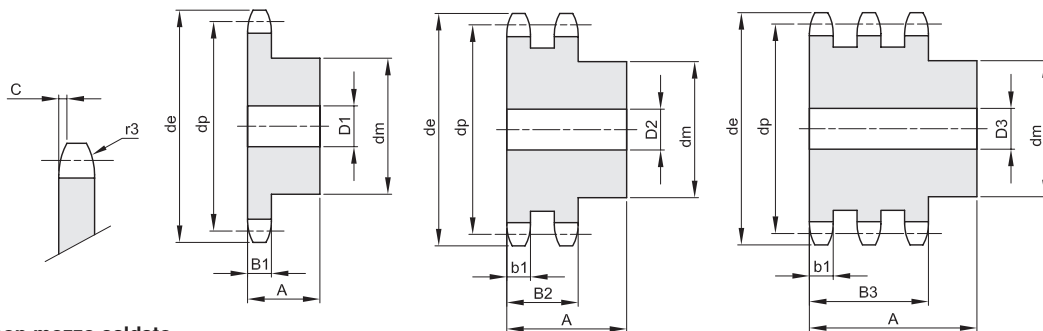


# PIGNONI PER CATENE A RULLI - DIN 8187 - ISO 606

## SPROCKETS FOR ROLLER CHAINS - DIN 8187 - ISO 606

**1"3/4 x 1"1/4**  
**44,45 x 30,99 mm**  
**Rullo 27,94 mm**  
**28B - 1 - 2 - 3**

|      |      |     |      |   |    |
|------|------|-----|------|---|----|
| B1   | B2   | B3  | b1   | C | r3 |
| 29,4 | 88,4 | 148 | 28,8 | 5 | 44 |



Materiale C 43 UNI 7847 / \*Materiale Fe - con mozzo saldato

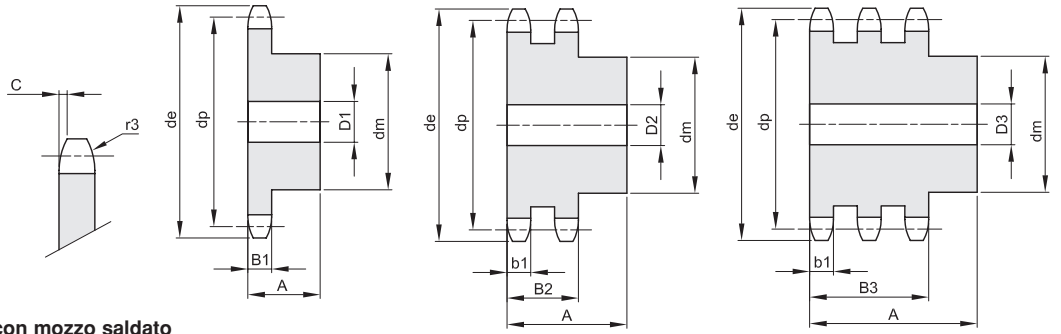
| Z  | de     | dp      | semplici |    |     |        | doppi |    |     |        | tripli |    |     |         |
|----|--------|---------|----------|----|-----|--------|-------|----|-----|--------|--------|----|-----|---------|
|    |        |         | dm       | D1 | A   | Kg.    | dm    | D2 | A   | Kg.    | dm     | D3 | A   | Kg.     |
| 8  | 132,0  | 116,15  | 74       | 25 | 70  | 2,86   | 74    | 30 | 120 | 4,75   | 74     | 30 | 180 | 7,04    |
| 9  | 146,0  | 129,96  | 88       | 25 | 70  | 4,00   | 88    | 30 | 120 | 6,66   | 88     | 30 | 180 | 9,89    |
| 10 | 160,0  | 143,85  | 100      | 25 | 70  | 5,18   | 100   | 30 | 120 | 8,79   | 100    | 30 | 180 | 13,10   |
| 11 | 174,0  | 157,77  | 112      | 25 | 70  | 6,51   | 112   | 30 | 120 | 11,19  | 112    | 30 | 180 | 16,73   |
| 12 | 188,0  | 171,74  | 125      | 25 | 70  | 8,04   | 125   | 30 | 120 | 13,91  | 125    | 30 | 180 | 20,84   |
| 13 | 204,0  | 185,75  | 125      | 25 | 70  | 8,88   | 125   | 30 | 120 | 16,25  | 125    | 30 | 180 | 24,70   |
| 14 | 218,0  | 199,76  | 125      | 25 | 70  | 9,79   | 125   | 30 | 120 | 18,81  | 125    | 30 | 180 | 28,93   |
| 15 | 232,0  | 213,79  | 125      | 25 | 70  | 10,77  | 145   | 30 | 120 | 22,64  | 145    | 30 | 180 | 34,58   |
| 16 | 246,0  | 227,84  | 160      | 30 | 75  | 14,96  | 160   | 30 | 120 | 26,52  | 160    | 30 | 180 | 40,44   |
| 17 | 260,0  | 241,90  | 160      | 30 | 75  | 16,09  | 160   | 30 | 120 | 29,74  | 160    | 30 | 180 | 45,77   |
| 18 | 274,0  | 255,98  | 160      | 30 | 75  | 17,28  | 160   | 30 | 120 | 33,17  | 160    | 30 | 180 | 51,76   |
| 19 | 289,0  | 270,06  | 160      | 30 | 75  | 18,56  | 180   | 30 | 120 | 38,14  | 180    | 30 | 180 | 58,07   |
| 20 | 303,0  | 284,15  | 160      | 30 | 75  | 19,90  | 180   | 30 | 120 | 42,02  | 180    | 30 | 180 | 64,49   |
| 21 | 317,0  | 298,24  | 160      | 30 | 75  | 21,31  | 180   | 30 | 120 | 49,10  | 180    | 40 | 180 | 71,28   |
| 22 | 331,0  | 312,34  | *160     | 30 | 75  | 22,80  | *180  | 30 | 120 | 50,40  |        |    |     |         |
| 23 | 345,0  | 326,44  | *160     | 30 | 75  | 24,36  | *180  | 30 | 120 | 54,92  | *180   | 40 | 180 | 85,94   |
| 24 | 359,0  | 340,55  | *160     | 30 | 75  | 26,00  |       |    |     |        |        |    |     |         |
| 25 | 373,0  | 354,66  | *160     | 30 | 75  | 27,70  | *180  | 30 | 120 | 64,62  | *180   | 40 | 180 | 112,07  |
| 26 | 387,0  | 368,77  | *160     | 30 | 75  | 29,48  | *180  | 40 | 120 | 69,28  |        |    |     |         |
| 27 | 401,0  | 382,88  | *160     | 30 | 75  | 31,36  |       |    |     |        |        |    |     |         |
| 28 | 416,0  | 397,00  | *160     | 30 | 75  | 33,26  | *180  | 40 | 120 | 80,28  |        |    |     |         |
| 29 | 430,0  | 411,12  |          |    |     |        |       |    |     |        |        |    |     |         |
| 30 | 444,0  | 425,24  | *160     | 30 | 75  | 37,33  | *180  | 40 | 120 | 92,17  | *180   | 40 | 180 | 148,79  |
| 31 | 458,0  | 439,37  |          |    |     |        |       |    |     |        |        |    |     |         |
| 32 | 472,0  | 453,49  | *180     | 30 | 75  | 43,59  |       |    |     |        |        |    |     |         |
| 33 | 486,0  | 467,62  |          |    |     |        |       |    |     |        |        |    |     |         |
| 34 | 500,0  | 481,75  | *180     | 30 | 75  | 48,24  |       |    |     |        |        |    |     |         |
| 35 | 514,0  | 495,88  | *180     | 30 | 75  | 50,57  | *200  | 40 | 120 | 127,17 |        |    |     |         |
| 36 | 529,0  | 510,01  | *180     | 30 | 75  | 53,18  |       |    |     |        |        |    |     |         |
| 37 | 543,0  | 524,13  |          |    |     |        |       |    |     |        |        |    |     |         |
| 38 | 557,0  | 538,27  | *180     | 30 | 75  | 58,40  | *200  | 40 | 120 | 149,90 | *200   | 40 | 180 | 244,01  |
| 40 | 585,0  | 566,54  | *180     | 30 | 75  | 63,92  | *200  | 40 | 120 | 167,15 | *200   | 40 | 180 | 271,10  |
| 45 | 656,0  | 637,22  | *180     | 30 | 75  | 79,12  | *200  | 40 | 150 | 218,10 | *200   | 40 | 209 | 352,63  |
| 50 | 726,0  | 707,91  | *180     | 30 | 75  | 96,00  | *200  | 40 | 150 | 267,99 |        |    |     |         |
| 57 | 825,0  | 806,90  | *180     | 40 | 123 | 125,13 | *200  | 40 | 150 | 346,99 | *200   | 40 | 209 | 567,76  |
| 60 | 869,0  | 849,32  | *180     | 40 | 123 | 144,00 |       |    |     |        |        |    |     |         |
| 76 | 1095,0 | 1075,62 | *180     | 40 | 123 | 215,46 | *200  | 40 | 150 | 615,35 | *238   | 40 | 217 | 1024,97 |

# PIGNONI PER CATENE A RULLI - DIN 8187 - ISO 606

## SPROCKETS FOR ROLLER CHAINS - DIN 8187 - ISO 606

**2" x 1"1/4**

**50,8 x 30,99 mm**  
**Rullo 29,21 mm**  
**32B - 1 - 2 - 3**



|      |      |     |      |   |    |
|------|------|-----|------|---|----|
| B1   | B2   | B3  | b1   | C | r3 |
| 29,4 | 87,4 | 146 | 28,8 | 6 | 51 |

Materiale C 43 UNI 7847 / \*Materiale Fe - con mozzo saldato

| Z  | de     | dp      | semplici |    |     |        | doppi |    |     |        | tripli |    |     |         |
|----|--------|---------|----------|----|-----|--------|-------|----|-----|--------|--------|----|-----|---------|
|    |        |         | dm       | D1 | A   | Kg.    | dm    | D2 | A   | Kg.    | dm     | D3 | A   | Kg.     |
| 8  | 152,0  | 132,74  | 85       | 30 | 80  | 4,20   | 85    | 30 | 120 | 6,65   | 85     | 30 | 180 | 9,90    |
| 9  | 168,0  | 148,54  | 100      | 30 | 80  | 5,78   | 100   | 30 | 120 | 9,14   | 100    | 30 | 180 | 13,65   |
| 10 | 184,0  | 164,39  | 115      | 30 | 80  | 7,60   | 115   | 30 | 120 | 12,01  | 115    | 30 | 180 | 17,97   |
| 11 | 200,0  | 181,31  | 125      | 30 | 80  | 9,26   | 125   | 35 | 120 | 14,75  | 125    | 35 | 180 | 22,22   |
| 12 | 216,0  | 196,29  | 133      | 30 | 80  | 10,91  | 133   | 35 | 120 | 17,95  | 133    | 35 | 180 | 27,23   |
| 13 | 235,0  | 212,29  | 145      | 30 | 80  | 13,05  | 145   | 35 | 120 | 21,68  | 145    | 35 | 180 | 32,98   |
| 14 | 251,0  | 228,29  | 145      | 30 | 80  | 14,25  | 145   | 35 | 120 | 25,03  | 145    | 35 | 180 | 38,50   |
| 15 | 267,0  | 244,30  | 145      | 30 | 80  | 15,53  | 160   | 35 | 120 | 29,30  | 160    | 35 | 180 | 45,04   |
| 16 | 283,0  | 260,40  | 160      | 30 | 90  | 19,87  | 160   | 40 | 120 | 33,21  | 160    | 40 | 180 | 51,50   |
| 17 | 299,0  | 276,46  | 160      | 30 | 90  | 21,35  | 180   | 40 | 120 | 38,76  | 200    | 40 | 180 | 61,45   |
| 18 | 315,0  | 292,55  | 160      | 30 | 90  | 22,92  | 180   | 40 | 120 | 43,24  | 200    | 40 | 180 | 68,85   |
| 19 | 331,0  | 308,66  | 160      | 30 | 90  | 24,53  | 200   | 40 | 120 | 49,52  | 200    | 40 | 180 | 76,73   |
| 20 | 347,0  | 324,71  | 180      | 40 | 90  | 28,50  | 200   | 40 | 120 | 54,56  | 200    | 40 | 180 | 85,07   |
| 21 | 363,0  | 340,82  | 180      | 40 | 90  | 30,36  | 200   | 40 | 120 | 59,87  | 200    | 40 | 180 | 93,89   |
| 22 | 379,0  | 356,98  | *180     | 40 | 90  | 32,31  | *200  | 40 | 120 | 65,47  |        |    |     |         |
| 23 | 396,0  | 373,08  | *180     | 40 | 90  | 34,36  | *200  | 40 | 120 | 71,35  | *200   | 40 | 180 | 112,93  |
| 24 | 412,0  | 389,18  | *180     | 40 | 90  | 36,50  | *200  | 40 | 120 | 77,52  |        |    |     |         |
| 25 | 428,0  | 405,33  | *180     | 40 | 90  | 38,74  | *200  | 40 | 120 | 83,66  | *200   | 40 | 180 | 133,86  |
| 26 | 444,0  | 421,44  | *180     | 40 | 90  | 41,07  | *200  | 40 | 120 | 90,69  |        |    |     |         |
| 27 | 460,0  | 437,59  |          |    |     |        |       |    |     |        |        |    |     |         |
| 28 | 476,0  | 453,69  | *180     | 40 | 90  | 46,01  | *200  | 40 | 120 | 104,99 |        |    |     |         |
| 29 | 492,0  | 469,85  |          |    |     |        |       |    |     |        |        |    |     |         |
| 30 | 508,0  | 486,00  | *180     | 40 | 90  | 51,34  | *200  | 40 | 120 | 120,41 | *200   | 40 | 180 | 194,42  |
| 31 | 525,0  | 502,13  |          |    |     |        |       |    |     |        |        |    |     |         |
| 32 | 541,0  | 518,27  | *200     | 40 | 90  | 59,89  |       |    |     |        |        |    |     |         |
| 33 | 557,0  | 534,42  |          |    |     |        |       |    |     |        |        |    |     |         |
| 34 | 573,0  | 550,56  |          |    |     |        |       |    |     |        |        |    |     |         |
| 35 | 589,0  | 566,71  | *200     | 40 | 90  | 69,16  | *200  | 40 | 120 | 163,85 | *200   | 40 | 180 | 267,49  |
| 36 | 605,0  | 582,86  |          |    |     |        |       |    |     |        |        |    |     |         |
| 37 | 622,0  | 599,01  |          |    |     |        |       |    |     |        |        |    |     |         |
| 38 | 638,0  | 615,16  | *200     | 40 | 90  | 79,28  | *200  | 40 | 120 | 193,33 | *200   | 40 | 180 | 316,22  |
| 40 | 670,0  | 647,47  | *200     | 40 | 90  | 86,50  | *200  | 40 | 120 | 214,39 |        |    |     |         |
| 45 | 751,0  | 728,24  | *218     | 40 | 123 | 118,87 | *220  | 40 | 148 | 282,32 | *220   | 40 | 207 | 456,64  |
| 50 | 832,0  | 809,04  | *218     | 40 | 123 | 140,96 | *220  | 40 | 148 | 346,95 | *220   | 40 | 207 | 564,27  |
| 57 | 945,0  | 922,16  | *218     | 40 | 123 | 175,86 | *220  | 40 | 148 | 449,27 | *220   | 40 | 207 | 734,72  |
| 60 | 993,0  | 970,65  | *218     | 40 | 123 | 192,24 |       |    |     |        |        |    |     |         |
| 76 | 1252,0 | 1229,27 | *218     | 40 | 123 | 294,00 | *220  | 40 | 148 | 796,60 | *238   | 40 | 216 | 1319,64 |