



MONDIALTECH

Forniture Industriali

Via Raimondo Dalla Costa 240/b
41100 MODENA - ITALY
Tel. +39 059 250090 Fax. +39 059 260083
Codice R.E.A. 354046
Partita IVA E Codice Fiscale: 03061810366
e-Mail: mondialtech@mondialtech.net
Web: <http://www.mondialtech.net>

LK
Supporto di Qualità

CSC
Cuscinetti Standard

MONDIAL
Cuscinetti a Rulli

Vasto assortimento di Cuscinetti SKF - FAG





MONDIALTECH srl è un'azienda specializzata nelle soluzioni tecniche per l'industria, con personale specializzato e la più ampia varietà di prodotti finalizzati alle diverse applicazioni garantendone la qualità adeguata alla giusta applicazione.

Dalla esperienza del proprio personale operante da diversi anni nel settore siamo in grado di soddisfare le più svariate necessità della clientela proponendo prodotti che per rapporto qualità/prezzo sono unici sul mercato.

MONDIALTECH srl is a company specialized in the technical solution for the industry, with specialistic staff and the widest variety than produced finalizes you to the various application guaranteeing some the quality adapted to the just application. From the just personal experience of operating one from various years in the field we are in a position to satisfying the most varied produced necessities of the customers proposing that for relationship quality/price is only on the market.





MONDIALTECH
Forniture Industriali

Via Raimondo Dalla Costa 240/b
41100 MODENA - ITALY
Tel. +39 059 256090 Fax. +39 059 260883
Codice R.E.A. 354046
Partita IVA E Codice Fiscale: 03061810366
e-Mail: monditecinfo@mondialtech.net
Web: <http://www.mondialtech.net>

Vasto assortimento di Cuscinetti SKF - FAG

LK
Supporti di Qualità

CSC
Cuscinetti Standard

MONDIAL
Cuscinetti a Balli

Grazie a magazzini costantemente riforniti ogni tipologia di prodotto è sempre disponibile in elevata quantità.

Thanks to warehouses constantly resupplied every types of product always available in are elevated amount.





MONDIALTECH
Forniture Industriali

Via Raimondo Dalla Costa 240/b
41100 MODENA - ITALY
Tel. +39 059 250090 Fax. +39 059 260083
Codice R.E.A. 354046
Partita IVA E. Codice Fiscale: 03061810366
e-Mail: multiscinfo@mondialtech.net
Web: <http://www.mondialtech.net>

Vasto assortimento di Cuscinetti SKF - FAG

LK
Supporto di Qualità

CSC
Certificazione Nazionale

MONDIAL
Carrozze e Balli

La qualità è garantita grazie ad accordi con Aziende produttrici certificate ed ai continui e costanti controlli effettuati da nostri tecnici sempre presenti presso i produttori.

The quality is guaranteed thanks to agreements with Companies certified manufacturers and to the continuous and constant controls it carries out to you from our always present technicians near the producers.





INDICE - INDEX

- **SN 500**
- **SNU 500**
- **SN 600**
- **SNU 600**
- **Bussole di Trazione**
- **Bussole di Pressione**
- **Ghiere di Bloccaggio**
- **Rosette di Sicurezza**



MONDIALTECH
Forniture Industriali

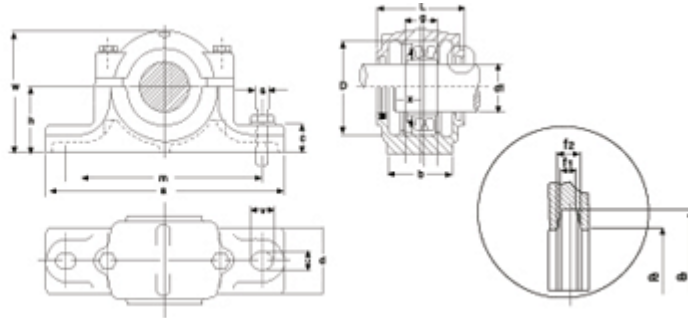
Via Raimondo Dalla Costa 240/b
41100 MODENA - ITALY
Tel. +39 059 250090 Fax: +39 059 260083
Codice R.E.A. 354046
Partita IVA E. Codice Fiscale: 03061810366
e-Mail: monditecinfo@mondialtech.net
Web: http://www.mondialtech.net

Vasto assortimento di Cuscinetti SKF - FAG

LK
Prepared to Order

CSC
Cuscinetti Standard

MONDIAL
Cuscinetti a Balli



Housing No.	Shaft mm	Dimensioni - Dimensions (mm)															Wt Kg	Bearing No.	Adapter Sleeve	Locating Ring					
		D/8	a	b	c	g/H12	h/h12	L	W	m	s	u	v	x	d2/H12	d3/H12				f1/H13	f2	Number	QTY		
SN505	20 3/4	52	165	46	22	25	40	67	75	130	M12	15	20	22	21.5	31	3	4.2	1.4	1205K	H205	HE205	SR52*5	2	
		2205K	22205K	H305	HE305	SR52*7	1																		
SN506	25 1	62	185	52	22	30	50	77	90	150	M12	15	20	22	26.5	38	4	5.4	1.9	1206K	H206	HE206	SR62*7	2	
		2206K	22206K	H306	HE306	SR62*10	1																		
SN507	30 1 1/8	72	185	52	22	33	50	82	95	150	M12	15	20	24	31.5	43	4	5.4	2.0	1207K	H207	HE207	SR72*8	2	
		2207K	22207K	H307	HE307	SR72*10	1																		
SN508	35 1 1/4	80	205	60	25	33	60	85	110	170	M12	15	20	26	36.5	48	4	5.4	3.2	1208K	H208	HE208	SR80*7.5	2	
		2208K	22208K	H308	HE308	SR80*10	1																		
SN509	40 1 1/2	85	205	60	25	31	60	85	112	170	M12	15	20	28	41.5	53	4	5.4	3.0	1209K	H209	HE209	SR85*6	2	
		2209K	22209K	H309	HE309	SR85*8	1																		
SN510	45 1 3/4	90	205	60	25	33	60	90	115	170	M12	15	20	28	46.5	58	4	5.4	3.4	1210K	H210	HE210	SR90*6.5	2	
		2210K	22210K	H310	HE310	SR90*10	1																		
SN511	50 2	100	255	70	28	33	70	95	130	210	M16	18	23	30	51.5	67	5	6.9	4.6	1211K	H211	HE211	SR100*6	2	
		2211k	22211K	H311	HE311	SR100*8	1																		
SN512	55 2 1/8	110	255	70	30	38	70	105	135	210	M16	18	23	32	56.5	72	5	6.9	5.0	1212K	H212	HE212	SR110*8	2	
		2212K	22212K	H312	HE312	SR110*10	1																		
SN513	60 2 1/4	120	275	80	30	43	80	110	150	230	M16	18	23	36	62	77	5	6.8	6.8	1213K	H213	HE313	SR120*12	2	
		2213K	22213K	H313	HE2313	SR120*10	1																		
SN515	65 2 1/2	130	280	80	30	41	80	115	155	230	M16	18	23	38	67	82	5	6.8	7.4	1215K	H215	HE315	SR130*8	2	
		2215K	22215K	H315	HE2315	SR130*10	1																		
SN516	70 2 3/4	140	315	90	32	43	95	120	175	260	M20	22	27	40	72	89	6	8.1	9.5	1216K	H216	HE316	SR140*8.5	2	
		2216K	22216K	HE316	HE316	SR140*10	1																		
SN517	75 3	150	320	90	32	46	95	125	185	260	M20	22	27	42	77	94	6	8.1	10.0	1217K	H217	HE317	SR150*9	2	
		2217K	22217K	H317	HE317	SR150*10	1																		
SN518	80 3 1/4	160	345	100	35	62	410	101	145	195	290	M20	22	27	50	82	99	6	8.1	12.8	1218K	H218	HE218	SR160*16.2	2
																					2218K	H318	HE318	SR160*11.2	1
																					22218KH	HE2318	HE2318	SR160*10	1
SN519	85 -	170	345	100	35	53	112	140	210	290	M20	22	27	52	87	104	6	8.1	15.4	1219K	H219	HE219	SR170*10.5	2	
																				2219K	22219K	H319	HE319	SR170*10	1



Housing No.	Shaft	Dimensioni - Dimensions (mm)																Wt Kg	Bearing No.	Adapter Sleeve	Locating Ring		
		mm	in	D	a	b	c	g	h	L	W	m	s	u	v	x	d2				d3	f1	f2
SN520	90	3 ¹ / ₂	180	380	110	40	70	31	12	160	218	320	M24	26	32	54	92	17.8	2220K	22220K H220 HE320 SR180*12.1	2		
		23220K H320 HE2320 SR180*10	1																				
SN522	100	4	200	410	120	45	80	125	175	240	350	M24	26	32	60	102	125	8	10.8	19	2222K	22222K H222 HE322 SR200*13.5	2
		23222KH3222HE2322 SR200*10	1																				
SN524	110	4 ¹ / ₂	215	410	120	45	86	140	185	270	350	M24	26	32	64	113	135	8	10.7	26	-	22224KH3124HE3124 SR215*14	2
		23224KH2324HE2324 SR215*10	1																				
SN526	115	4 ¹ / ₂	230	445	130	50	90	150	190	290	380	M24	28	36	64	118	140	8	10.7	32	-	22226KH3126HE3126 SR230*13	2
		23226KH2326HE2326 SR230*10	1																				
SN528	125	5	250	500	150	50	98	150	205	305	420	M30	33	42	70	128	154	9	12.2	40	-	22228KH3128HE3128 SR250*15	2
		23228KH2328HE2328 SR250*10	1																				
SN530	135	5 ¹ / ₂	270	530	160	60	106	160	220	325	450	M30	33	42	76	138	164	9	12.2	47.2	-	22230KH3130HE3130SR270*16.5	2
		23230KH2330HE2330 SR270*10	1																				
SN532	140	5 ¹ / ₂	290	550	160	60	114	170	235	345	470	M30	33	42	80	143	173	10	13.75	6.5	-	22232KH3132HE3132 SR290*17	2
		23232KH2332HE2332 SR290*10	1																				

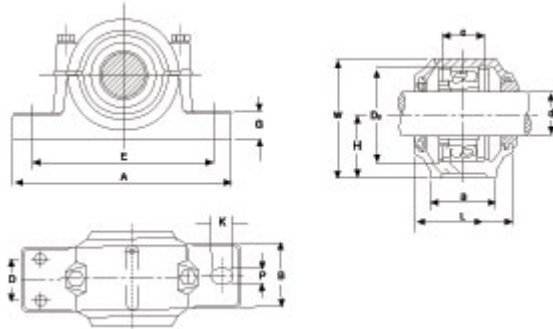


MONDIALTECH

Forniture Industriali

Via Raimondo Dalla Costa 240/b
 41100 MODENA - ITALY
 Tel. +39 059 250090 Fax: +39 059 260083
 Codice R.E.A. 354046
 Partita IVA E. Codice Fiscale: 03061810366
 e-Mail: monditecinfo@mondialtech.net
 Web: http://www.mondialtech.net

Vasto assortimento di Cuscinetti SKF - FAG



Housing No.	Shaft No.	Dimensions (mm)															BoltDia		Wt Bearing Kg	Adapter No.	Spacer Ring			
		H h12	A	E	B	P	K	G	W	L	D1	D2	D	J	F	C	D3H8	(2)			(4)	Size	QTY	
SNU505	20	40	165	130	46	13	20	19	72	67	31.5	39.5	7.5	5	25	52	M10	1.9	M10	H205	52*5	2		
SNU506	25	50	185	150	52	13	22	22	87	72	36.5	44.5	7.5	5	32	62	M10	2.2	M10	H206	62*5	2		
SNU507	30	50	185	150	52	13	20	22	92	82	46.5	54.5	7.5	5	34	72	M10	2.4	M10	H207 H307	72*8.5 72*5.5	2 2		
SNU508	35	60	205	170	60	15	20	25	106	85	51.5	59.5	7.5	5	39	80	M12	3.2	M12	H208 H308	80*10.5 80*8	2 2		
SNU509	40	60	205	170	60	15	20	25	108	85	56.5	64.35	8.5	5	30	85	M12	3.5	M12	H209 H309	85*5.5 85*7	2 1		
SNU510	45	60	205	170	60	15	20	25	112	90	62	70.5	8.5	5	41	90	M12	3.85	M12	H210 H310	90*10.5 90*9	2 2		
SNU511	50	70	255	210	70	18	23	28	126	95	67	75.5	35	8.5	5	44	100	M16	M12	5.2	M16M12	H211 H311	100*11.5 100*9.5	2 2
SNU512	55	70	255	210	70	18	23	30	132	105	72	80.5	35	8.5	5	48	110	M16	M12	6.7	M16M12	H212 H312	110*13 110*10	2 2
SNU513	60	80	275	230	80	18	24	30	147	110	77	85.5	35	8.5	5	51	120	M16	M12	7.9	M16M12	H213 H313	120*14 120*10	2 2
SNU515	65	80	280	230	80	18	26	30	153	115	87	95.5	40	8.5	5	56	130	M16	M12	7.7	M16M12	H215 H315	130*15.5 130*12.5	2 2
SNU516	70	95	315	260	90	22	29	32	174	120	92.5	101	40	10.5	5	58	140	M20	M12	11.0	M20M12	H216 H316	140*16 140*12.5	2 2
SNU517	75	95	320	260	90	22	30	32	180	125	97.5	106	50	10.5	5	61	150	M20	M12	12.7	M20M12	H217 H317	150*16.5 150*12.5	2 2
SNU518	80	100	345	290	100	22	27	35	190	140	102.5	111	50	10.5	5	65	160	M20	M16	14.8	M20M16	H218 H318 H2318	160*17.5 160*12.5 160*12.5	2 2 1
SNU519	85	112	345	290	100	22	27	35	209	145	131	141	150	11.5	6	68	170	M20	m16	15.4	M20m16	H219 H319	170*18 170*12.5	2 2
SNU520	90	112	380	320	110	26	32	40	215	160	137.5	147.5	60	11.5	6	70	180	M24	M16	18.4	M24M16	H220 H320 H2320	180*18 180*12 180*9.7	2 2 1



MONDIALTECH
Forniture Industriali

Via Raimondo Dalla Costa 240/b
41100 MODENA - ITALY
Tel. +39 059 250090 Fax: +39 059 260083
Codice R.E.A. 354046
Partita IVA E. Codice Fiscale: 03061810366
e-Mail: mondialtech@mondialtech.net
Web: <http://www.mondialtech.net>

Vasto assortimento di Cuscinetti SKF - FAG

LK
Pagamenti di Qualità

CSC
Cuscinetti Standard

MONDIAL
Cuscinetti a Balli

Housing No.	Shaft	Dimensions (mm)														BoltDia		Wt Bearing Kg	Adapter	Spacer Ring							
		H	A	E	B	P	K	G	W	L	D1	D2	D	J	F	C	D3H8			(2)	(4)	Size	QTY				
SNU522	100	125	410	350	120	26	32	45	23	91	175	147.5	51	57.5	70	11.6	6	80	200	M24	M16	24.8	M24	M16	H222	200*21	2
																									H322	200*13.5	2
																									H2322	200*10.2	1
SNU524	110	140	410	350	120	26	32	45	27	118	51	57.5	70	11.5	6	86	215	M24	M16	32.2	M24	M16	H224	215*14	2		
																							H324	215*10	1		
SNU526	115	150	445	380	130	28	35	50	290	190	167.5	51	77.5	70	13	6	90	230	M24	M20	39.8	M24	M20	H226	230*13	2	
																								H326	230*10	1	
SNU528	125	150	500	420	150	35	42	50	302	205	177.5	51	87.5	80	13	6	98	250	M30	M24	48.8	M30	M24	H228	250*15	2	
																								H328	250*10	1	
SNU530	135	160	530	450	160	35	42	60	323	220	192.5	52	02.5	90	13.5	6	106	270	M30	M24	56.5	M30	M24	H230	270*16.5	2	
																								H330	270*10	1	
SNU532	140	170	550	470	160	35	42	60	344	235	202.5	52	12.5	90	13.5	6	114	290	M30	M24	63.5	M30	M24	H232	290*17	2	
																								H332	290*10	1	



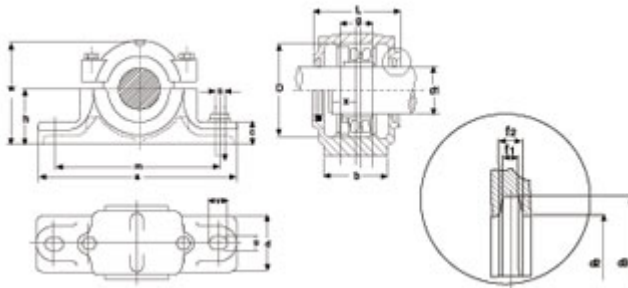
MONDIALTECH

Forniture Industriali

Via Raimondo Dalla Costa 240/b
41100 MODENA - ITALY
Tel. +39 059 250090 Fax: +39 059 260083
Codice R.E.A. 354046
Partita IVA E. Codice Fiscale: 03661810366
e-Mail: monditecinfo@mondialtech.net
Web: http://www.mondialtech.net



Vasto assortimento di Cuscinetti SKF - FAG



Housing No.	Shaft		Dimensions (mm)													Bearing No.	Adapter Sleeve	Locating Ring		Wt Kg			
	mm	in	D	a	b	c	g	h	L	W	m	U	V	s	d2			d3	f1		f2	Number	QTY
			H8				H12	h12							H12	H12	H12						
SN605	20	3/4	62	185	52	22	34	50	80	90	150	15	20	M12	21.5	31	3	4.2	1305K 2305K	H305 HE305 H2305HE2305	SR62*8.5 SR62*10	2 1	2.1
SN606	25	1	72	185	52	22	37	50	82	95	150	15	20	M12	26.5	38	4	5.4	1306K 2306K	H306 HE306 H2306HE2306	SR72*9 SR72*10	2 1	2.8
SN607	30	1 1/8	80	205	60	25	41	60	90	110	170	15	20	M12	31.5	43	4	5.4	1307K 2307K	H307 HE307 H2307HE2307	SR80*10 SR80*10	2 1	3.5
SN608	35	1 1/4	90	205	60	25	43	60	95	115	170	15	20	M12	36.5	48	4	5.4	1308K 2308K22308K	H308 HE308 2308 HE2308	SR90*10 SR90*10	2 1	4.2
SN609	40	1 1/2	100	255	70	28	46	70	105	130	210	18	23	M16	41.5	53	4	5.4	1309K 2309K22309KH	H309 HE209 H2309HE2309	SR100*10.5 SR100*10	2 1	5.0
SN610	45	1 3/4	110	255	70	30	50	70	115	135	210	18	23	M16	46.5	58	4	5.4	1310k 2310k22310KH	H310 HE310 H2310HE2310	SR110*11.5 SR110*10	2 1	6.1
SN611	50	2	120	275	80	30	53	80	120	150	230	18	23	M16	51.5	67	5	6.9	1311K 2311K22311KH	H311 HE311 H2311HE2311	SR120*12 SR120*10	2 1	6.5
SN612	55	2 1/8	130	280	80	30	56	80	125	155	230	18	23	M16	56.5	72	5	6.9	1312K 2312K22312KH	H312 HE312 H2312HE2312	SR130*12.5 SR130*10	2 1	7.9
SN613	60	2 1/4	140	315	90	32	58	95	130	175	260	22	27	M20	62	77	5	6.8	1313K 2313K22313KH	H313 HE313 H2313HE2313	SR140*12.5 SR140*10	2 1	10.8
SN615	65	2 1/2	160	340	100	35	65	100	140	195	290	22	27	M20	67	82	5	6.8	1315K 2315K22315KH	H315 HE315 H2315HE2315	SR160*14 SR160*10	2 1	14.6
SN616	70	2 3/4	170	340	100	35	68	112	145	212	290	22	27	M20	72	89	6	8.1	1316K 2316K22316KH	H316 HE316 H2316HE2316	SR170*14.5 SR170*10	2 1	17.1
SN617	75	3	180	380	110	40	70	112	155	218	320	26	32	M24	77	94	6	8.1	1317K 2317K22317KH	H317 HE317 H2317HE2317	SR180*14.5 SR180*10	2 1	18.7
SN618	80	3 1/4	190	400	120	33	74	112	160	230	320	26	35	M24	82	99	6	8.1	1318K 2318K22318KH	H318 HE318 H2318HE2318	SR190*15.5 SR190*10	2 1	24.1
SN619	85	-	200	420	120	36	77	125	170	245	350	26	35	M24	87	104	6	8.1	1319K 2319K22319KH	H319 HE319 H2319HE2319	SR200*16 SR200*10	2 1	25.5
SN620	90	3 1/2	215	420	130	38	83	140	175	280	350	26	35	M24	92	111	7	9.3	1320K 2320K22320KH	H320 HE320 H2320HE2320	SR215*18 SR215*10	2 1	31
SN622	100	4	240	460	130	40	90	150	190	300	390	28	38	M24	102	125	8	10.8	1322K 2322K22322KH	H322 HE322 H2322HE2322	SR240*20 SR240*10	2 1	41.4
SN624	110	4 1/4	260	540	160	50	96	160	205	325	450	33	42	M30	113	135	8	10.7	-	22324KH2324HE2324	SR260*10	1	54.6
SN626	115	4 1/2	280	560	160	50	103	170	215	350	470	33	42	M30	118	140	8	10	-	22326KH2326HE2326	SR280*10	1	67.2
SN628	125	5	300	630	170	55	112	180	235	375	520	35	45	M30	128	154	9	12.2	-	22328KH2328HE2328	SR300*10	1	92.6
SN630	135	5 1/4	320	680	180	55	118	190	245	395	560	35	45	M30	138	164	9	12.2	-	22330KH2330HE2330	SR320*10	1	101.5
SN632	140	5 1/2	340	710	190	60	124	200	255	415	580	42	52	M36	143	173	10	13.7	-	22332KH2332HE2332	SR340*10	1	122.

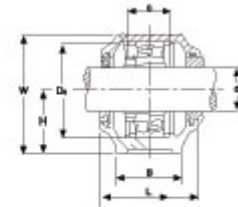
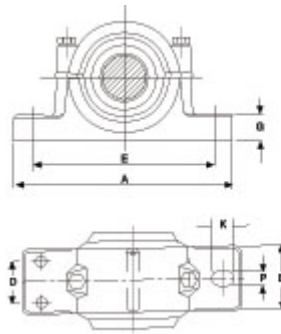


MONDIALTECH

Forniture Industriali

Via Raimondo Dalla Costa 240/b
41100 MODENA - ITALY
Tel. +39 059 250090 Fax: +39 059 260083
Codice R.E.A. 354046
Partita IVA E. Codice Fiscale: 03661810366
e-Mail: mondialtech@mondialtech.net
Web: <http://www.mondialtech.net>

Vasto assortimento di Cuscinetti SKF - FAG



Housing No.	Shaft	Dimensions (mm)											Bolt Dia		wt kg	Bearing No	Adapter	Spacer Ring		
		Hh12D3H8A	E	B	P	C	L	W	G	K	D	(2)	(4)	Number				QTY		
SNU605	20	50	62	185	150	52	13	32	77	87	22	20	M10		2.2	1305K	H305	SR62X7.5	2	
																2305K	H2305	SR62X8	1	
SNU606	25	50	72	185	150	52	13	32	82	92	22	20	M10		2.4	1306K	H306	SR72X7.5	2	
																2306K	H2306	SR72X7	1	
SNU607	30	60	80	205	170	60	15	39	85	106	25	22	M12		3.2	1307K	H307	SR80X9	2	
																2307K	H2307	SR80X8	1	
SNU608	35	60	90	205	170	60	15	41	90	112	25	22	M12		3.85	1308K	H308	SR90X9	2	
																2308K	H2308	SR90X8	1	
																21308K	H308	SR90X9	2	
																22308K	H2308	SR90X8	1	
SNU609	40	70	100	255	210	70	18	44	95	127	28	24	35	M16	M12	5.2	1309K	H309	SR100X9.5	2
																	2309K	H2309	SR100X8	1
																	21309K	H309	SR100X9.5	2
																	22309K	H2309	SR100X8	1
SNU610	45	70	110	255	210	70	18	48	105	133	30	24	35	M16	M12	6.7	1310k	H310	SR110X10.5	2
																	2310k	H2310	SR110X8	1
																	21310K	H310	SR110X10.5	2
																	22310K	H2310	SR110X8	1
SNU611	50	80	120	275	230	80	18	51	110	148	30	24	35	M16	M12	7.9	1311K	H311	SR120X11	2
																	2311K	H2311	SR120X8	1
																	21311K	H311	SR120X11	2
																	22311K	H2311	SR120X8	1
SNU612	55	80	130	280	230	80	18	56	115	154	30	26	40	M16	M12	7.7	1312K	H312	SR130X12.5	2
																	2312K	H2312	SR130X10	1
																	21312K	H312	SR130X12.5	2
																	22312K>	H2312	SR130X10	1
SNU613	60	95	140	315	260	90	22	58	120	175	32	30	40	M20	M12	11.0	1313K	H313	SR140X12.5	2
																	2313K	H2313	SR140X10	1
																	21313K	H313	SR140X12.5	2
																	22313K	H2313	SR140X10	1
SNU615	65	100	160	345	290	100	22	65	140	192	35	30	50	M20	M16	14.8	1315K	H315	SR160X14	2
																	2315K	H2315	SR160X10	1
																	21315K	H315	SR160X14	2
																	22315K	H2315	SR160X10	1
SNU616	70	112	170	345	290	100	22	68	145	209	35	30	50	M20	M16	15.5	1316K	H316	SR170X14.5	2
																	2316K	H2316	SR170X10	1
																	21316K	H316	SR170X14.5	2
																	22316K	H2316	SR170X10	1
SNU617	75	112	180	380	320	110	25	70	160	215	40	32	60	M24	M16	18.4	1317K	H317	SR180X14.5	2
																	2317K	H2317	SR180X10	1
																	21317K	H317	SR180X14.5	2
																	22317K	H2317	SR180X10	1
SNU619	85	125	200	410	350	120	25	80	175	239	45	32	70	M24	M16	24.8	2319K	H2319	SR200X13	1
SNU620	90	140	215	410	350	120	25	86	185	271	45	32	70	M24	M16	32.2	2320K	H2320	SR215X13	1



MONDIALTECH

Forniture Industriali

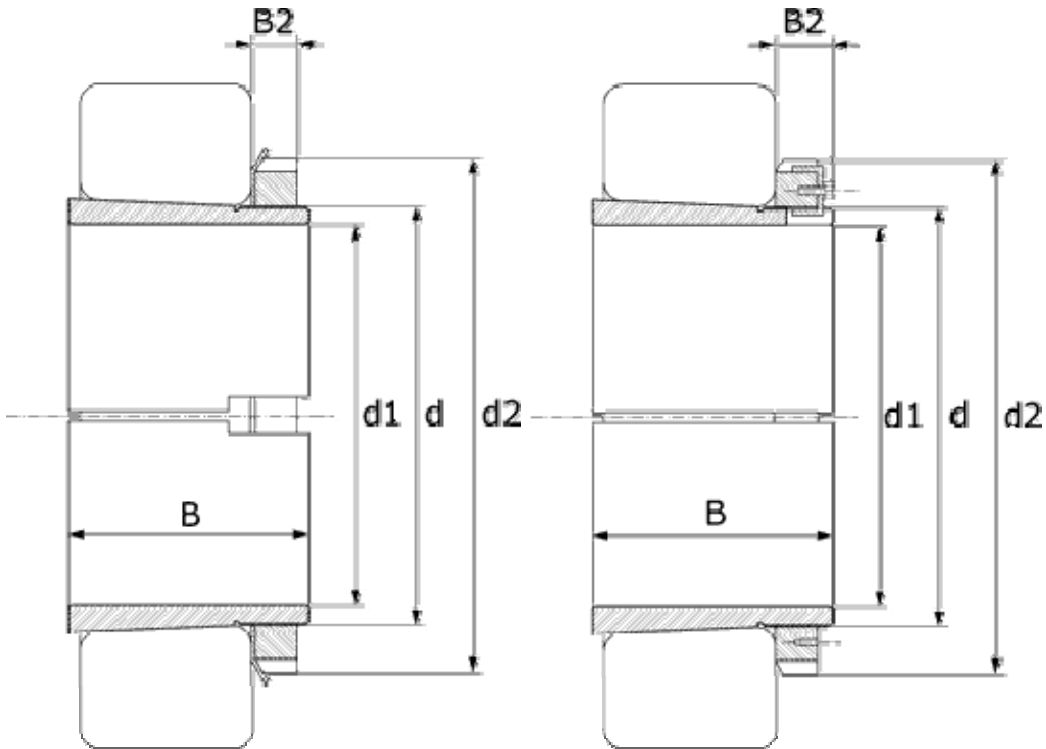
Via Raimondo Dalla Costa 240/b
41100 MODENA - ITALY
Tel. +39 059 256090 Fax: +39 059 260883
Codice R.E.A. 354046
Partita IVA E Codice Fiscale: 03661810366
e-Mail: monditecinfo@mondialtech.net
Web: <http://www.mondialtech.net>

Vasto assortimento di Cuscinetti SKF - FAG

LK
Pagamenti & Ordini

CSC
Credito e Banche

MONDIAL
Cassa e Balli



Bussola di trazione standard abbinata a ghiera KM
- Tapper looked with Nut KM

Bussola di trazione standard abbinata a ghiera HM
- Tapper Looked with Nut HM



MONDIALTECH

Forniture Industriali

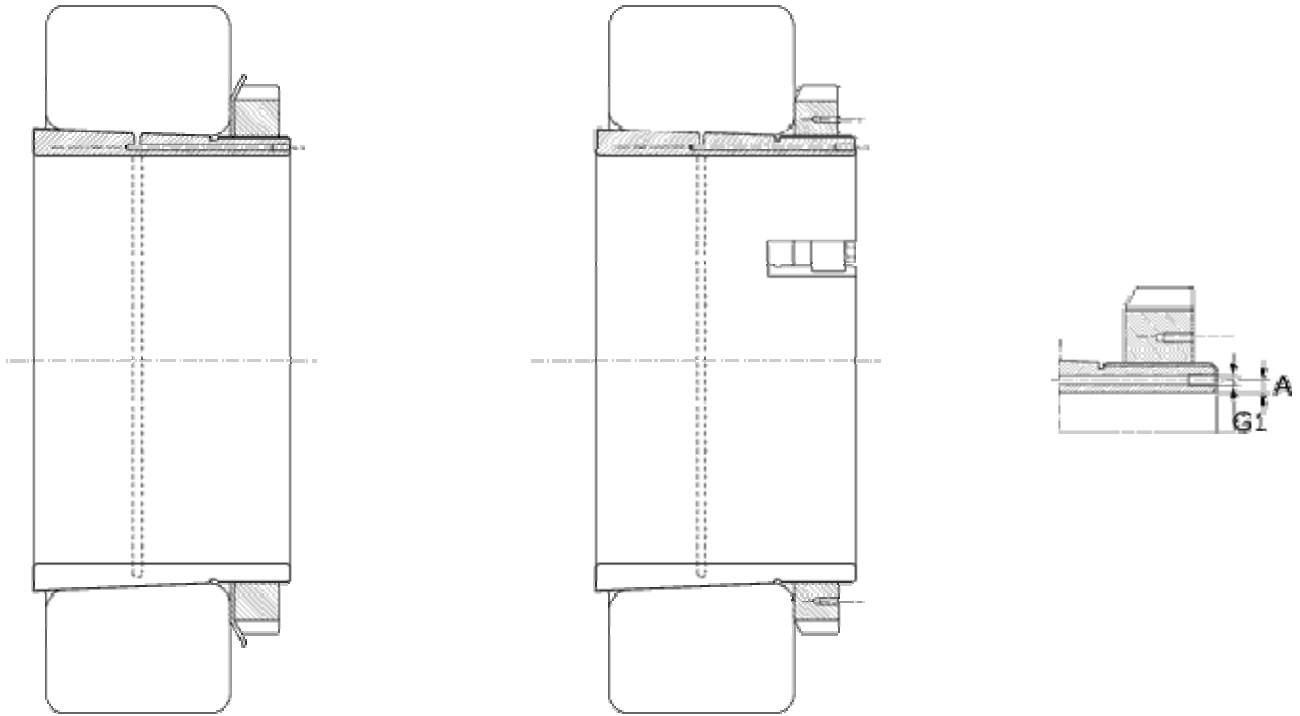
Via Raimondo Dalla Costa 240/b
41100 MODENA - ITALY
Tel. +39 059 250090 Fax. +39 059 260083
Codice R.E.A. 354046
Partita IVA E Codice Fiscale: 03061810366
e-Mail: monditecinfo@mondialtech.net
Web: <http://www.mondialtech.net>

Vasto assortimento di Cuscinetti SKF - FAG

LK
Supporti di Qualità

CSC
Cuscinetti Standard

MONDIAL
Cuscinetti a Rulli



Bussola di trazione con impianto ad olio abbinata a ghiera KM – Tapper looked with oil sistem and Nut KM

Bussola di trazione con impianto ad olio abbinata a ghiera HM – Tapper looked with oil sistem and Nut HM

d1 (mm)	d (mm)	d2 (mm)	B (mm)	B1 (mm)	B2 (mm)	Filetto (mm)	Peso - Weight (Kg)	Codice - Code	Ghiera di bloccaggio	Dispositivo di sicurezza	G1 (mm)	A (mm)	Codice
17	20	32	24	7	-	M 20x1	0,036	H 204	KM 4	MB 4			
		32	28	7	-	M 20x1	0,040	H 304	KM 4	MB 4			
		32	31	7	-	M 20x1	0,055	H 2304	KM 4	MB 4			
20	25	38	26	8	-	M 25x1,5	0,064	H 205	KM 5	MB 5			
		38	29	8	-	M 25x1,5	0,071	H 305	KM 5	MB 5			
		38	35	8	-	M 25x1,5	0,085	H 2305	KM 5	MB 5			
25	30	45	27	8	-	M 30x1,5	0,086	H 206	KM 6	MB 6			
		45	31	8	-	M 30x1,5	0,095	H 306	KM 6	MB 6			
		45	38	8	-	M 30x1,5	0,110	H 2306	KM 6	MB 6			
30	35	52	29	9	-	M 35x1,5	0,120	H 207	KM 7	MB 7			
		52	35	9	-	M 35x1,5	0,140	H 307	KM 7	MB 7			



MONDIALTECH

Forniture Industriali

Via Raimondo Dalla Costa 240/b
 41100 MODENA - ITALY
 Tel. +39 059 250090 Fax: +39 059 260083
 Codice R.E.A. 354046
 Partita IVA E Codice Fiscale: 03061810366
 e-Mail: monditecinfo@mondialtech.net
 Web: <http://www.mondialtech.net>



Vasto assortimento di Cuscinetti SKF - FAG

d1 (mm)	d (mm)	d2 (mm)	B (mm)	B1 (mm)	B2 (mm)	Filetto (mm)	Peso - Weight (Kg)	Codice - Code	Ghiera di bloccaggio	Dispositivo di sicurezza	G1 (mm)	A (mm)	Codice
		52	43	9	-	M 35x1,5	0,160	H 2307	KM 7	MB 7			
35	40	58	31	10	-	M 40x1,5	0,160	H 208	KM 8	MB 8			
		58	36	10	-	M 40x1,5	0,170	H 308	KM 8	MB 8			
		58	46	10	-	M 40x1,5	0,220	H 2308	KM 8	KM 8			
40	45	65	33	11	-	M 45x1,5	0,210	H 209	KM 9	MB 9			
		65	39	11	-	M 45x1,5	0,230	H 309	KM 9	MB 9			
		65	50	11	-	M 45x1,5	0,270	H 2309	KM 9	MB 9			
45	50	70	35	12	-	M 50x1,5	0,240	H 210	KM 10	MB 10			
		70	42	12	-	M 50x1,5	0,270	H 310	KM 10	MB 10			
		70	55	12	-	M 50x1,5	0,340	H 2310	KM 10	MB 10			
50	55	75	37	12,5	-	M 55x2	0,280	H 211	KM 11	MB 11			
		75	45	12,5	-	M 55x2	0,320	H 311	KM 11	MB 11			
		75	59	12,5	-	M 55x2	0,390	H 2311	KM 11	MB 11			
55	60	80	38	13	-	M 60x2	0,310	H 212	KM 12	MB 12			
		80	47	13	-	M 60x2	0,360	H 312	KM 12	MB 12			
		80	62	13	-	M 60x2	0,450	H 2312	KM 12	MB 12			
60	65	85	40	14	-	M 65x2	0,360	H 213	KM 13	MB 13			
		85	50	14	-	M 65x2	0,420	H 313	KM 13	MB 13			
		85	65	14	-	M 65x2	0,520	H 2313	KM 13	MB 13			
	70	92	52	14	-	M 70x2	0,670	H 314	KM 14	MB 14			
		92	68	14	-	M 70x2	0,880	H 2314	KM 14	MB 14			
65	75	98	43	15	-	M 75x2	0,660	H 215	KM 15	MB 15			
		98	55	14,5	-	M 75x2	0,780	H 315	KM 15	MB 15			
		98	73	14,5	-	M 75x2	1,100	H 2315	KM 15	MB 15			
70	80	105	46	17	-	M 80x2	0,810	H 216	KM 16	MB 16			
		105	59	17	-	M 80x2	0,950	H 316	KM 16	MB 16			
		105	78	17	-	M 80x2	1,200	H 2316	KM 16	MB 16			
75	85	110	50	18	-	M 85x2	0,950	H 217	KM 17	MB 17			
		110	63	18	-	M 85x2	1,100	H 317	KM 17	MB 17			
		110	82	18	-	M 85x2	1,350	H 2317	KM 17	MB 17			
80	90	120	52	18	-	M 90x2	1,100	H 218	KM 18	MB 18			



MONDIALTECH

Forniture Industriali

Via Raimondo Dalla Costa 240/b
 41100 MODENA - ITALY
 Tel. +39 059 250090 Fax: +39 059 260083
 Codice R.E.A. 354046
 Partita IVA E Codice Fiscale: 03061810366
 e-Mail: multiscinfo@mondialtech.net
 Web: <http://www.mondialtech.net>



Vasto assortimento di Cuscinetti SKF - FAG

d1 (mm)	d (mm)	d2 (mm)	B (mm)	B1 (mm)	B2 (mm)	Filetto (mm)	Peso - Weight (Kg)	Codice - Code	Ghiera di bloccaggio	Dispositivo di sicurezza	G1 (mm)	A (mm)	Codice
		120	65	18	-	M 90x2	1,300	H 318	KM 18	MB 18			
		120	86	18	-	M 90x2	1,600	H 2318	KM 18	MB 18			
85	95	125	55	19	-	M 95x2	1,250	H 219	KM 19	MB 19			
		125	68	19	-	M 95x2	1,400	H 319	KM 19	MB 19			
		110	90	19	-	M 95x2	1,800	H 2319	KM 19	MB 19			
90	100	130	58	20	-	M 100x2	1,400	H 220	KM 20	MB 20			
		130	71	20	-	M 100x2	1,800	H 320	KM 20	MB 20			
		130	97	20	-	M 100x2	2,000	H 2320	KM 20	MB 20			
95	105	130	60	20	-	M 105x2	1,600	H 221	KM 21	MB 21			
		130	74	20	-	M 105x2	1,850	H 321	KM 21	MB 21			
		130	101	20	-	M 105x2	2,350	H 2321	KM 21	MB 21			
100	110	145	63	21	-	M 110x2	1,800	H 222	KM 22	MB 22			
		145	77	21	-	M 110x2	2,050	H 322	KM 22	MB 22			
		145	81	21	-	M 110x2	3,100	H 3122	KM 22	MB 22			
		145	105	21	-	M 110x2	2,750	H 2322	KM 22	MB 22			
110	120	145	60	22	-	M 120x2	1,500	H 3924	KML 24	MBL 24			
		145	72	22	-	M 120x2	1,800	H 3024	KML 24	MBL 24			
		155	88	22	-	M 120x2	2,500	H 3124	KM 24	MB 24			
		155	112	22	-	M 120x2	3,000	H 2324	KM 24	MB 24			
115	130	155	65	23	-	M 130x2	2,300	H 3926	KML 26	MBL 26			
		155	80	23	-	M 130x2	2,800	H 3026	KML 26	MBL 26			
		165	92	23	-	M 130x2	3,450	H 3126	KM 26	MB 26			
		165	121	23	-	M 130x2	4,450	H 2326	KM 26	MB 26			
125	140	165	66	24	-	M 140x2	2,500	H 3928	KML 28	MBL 28			
		165	82	24	-	M 140x2	3,050	H 3028	KML 28	MBL 28			
		180	97	24	-	M 140x2	4,100	H 3128	KM 28	MB 28			
		180	131	24	-	M 140x2	5,400	H 2328	KM 28	MB 28			
135	150	180	76	26	-	M 150x2	3,300	H 3930	KML 30	MBL 30			
		180	87	26	-	M 150x2	3,750	H 3030	KML 30	MBL 30			
		195	111	26	-	M 150x2	5,250	H 3130	KM 30	MB 30			
		195	139	26	-	M 150x2	6,400	H 2330	KM 30	MB 30			
140	160	190	78	27,5	-	M 160x3	4,300	H 3932	KML 32	MBL 32			
		190	93	27,5	-	M 160x3	5,100	H 3032	KML 32	MBL 32			
		210	119	28	-	M 160x3	7,250	H 3132	KM 32	MB 32			
		210	147	28	-	M 160x3	8,800	H 2332	KM 32	MB 32			
150	170	200	79	28,5	-	M 170x3	4,500	H 3934	KML 34	MBL 34			
		200	101	28,5	-	M 170x3	5,800	H 3034	KML 34	MBL 34			
		220	122	29	-	M 170x3	8,100	H 3134	KM 34	MB 34			



MONDIALTECH

Forniture Industriali

Via Raimondo Dalla Costa 240/b
 41100 MODENA - ITALY
 Tel. +39 059 250090 Fax: +39 059 260083
 Codice R.E.A. 354046
 Partita IVA E Codice Fiscale: 03061810366
 e-Mail: multiscinfo@mondialtech.net
 Web: <http://www.mondialtech.net>



Vasto assortimento di Cuscinetti SKF - FAG

d1 (mm)	d (mm)	d2 (mm)	B (mm)	B1 (mm)	B2 (mm)	Filetto (mm)	Peso - Weight (Kg)	Codice - Code	Ghiera di bloccaggio	Dispositivo di sicurezza	G1 (mm)	A (mm)	Codice
		220	154	29	-	M 170x3	9,900	H 2334	KM 34	MB 34			
160	180	210	87	29,5	-	M 180x3	5,400	H 3936	KML 36	MBL 36			
		210	109	29,5	-	M 180x3	6,800	H 3036	KML 36	MBL 36			
		230	131	30	-	M 180x3	9,150	H 3136	KM 36	MB 36			
		230	161	30	-	M 180x3	11,000	H 2336	KM 36	MB 36			
170	190	220	89	30,5	-	M 190x3	5,800	H 3938	KML 38	MBL 38			
		220	112	30,5	-	M 190x3	7,250	H 3038	KML 38	MBL 38			
		240	141	31	-	M 190x3	10,500	H 3138	KM 38	MB 38			
		240	163	31	-	M 190x3	12,000	H 2338	KM 38	MB 38			
180	200	240	98	31,5	-	M 200x3	7,300	H 3940	KML 40	MBL 40			
		240	120	31,5	-	M 200x3	8,900	H 3040	KML 40	MBL 40			
		250	150	32	-	M 200x3	12,000	H 3140	KM 40	MB 40			
		250	176	32	-	M 200x3	13,500	H 2340	KM 40	MB 40			
200	220	260	96	30	41	TR 220x4	7,500	H 3944	HM 3044	MS 3044	M 6	4,2	OH 3944
		260	126	30	41	TR 220x4	9,900	H 3044	HM 3044	MS 3044	M 6	4,2	OH 3044
		280	161	35	-	TR 220x4	15,000	H 3144	HM 44T	MB 44	M 6	4,2	OH 3144
		280	186	35	-	TR 220x4	17,000	H 2344	HM 44T	MB 44	M 6	4,2	OH 2344
220	240	290	101	34	46	TR 240x4	9,100	H 3948	HM 3048	MS 3048	M 6	4,2	OH 3948
		290	133	34	46	TR 240x4	12,000	H 3048	HM 3048	MS 3048	M 6	4,2	OH 3048
		300	172	37	-	TR 240x4	16,000	H 3148	HM 48T	MB 48	M 6	4,2	OH 3148
		300	199	37	-	TR 240x4	19,000	H 2348	HM 48T	MB 48	M 6	4,2	OH 2348
240	260	310	116	34	46	TR 260x4	10,800	H 3952	HM 3052	MS 3052	M 6	4,2	OH 3952
		310	145	34	46	TR 260x4	13,500	H 3052	HM 3052	MS 3052	M 6	4,2	OH 3052
		330	190	39	-	TR 260x4	21,000	H 3152	HM 52T	MB 52	M 6	4,2	OH 3152
		330	211	39	-	TR 260x4	23,000	H 2352	HM 52T	MB 52	M 6	4,2	OH 2352
260	280	330	121	38	50	TR 280x4	12,700	H 3956	HM 3056	MS 3056	M 6	4,2	OH 3956
		330	152	38	50	TR 280x4	16,000	H 3056	HM 3056	MS 3056	M 6	4,2	OH 3056
		350	195	41	-	TR 280x4	23,000	H 3156	HM 56T	MB 56	M 6	4,2	OH 3156



MONDIALTECH

Forniture Industriali

Via Raimondo Dalla Costa 240/b
 41100 MODENA - ITALY
 Tel. +39 059 250090 Fax: +39 059 260083
 Codice R.E.A. 354046
 Partita IVA E Codice Fiscale: 03061810366
 e-Mail: monditecinfo@mondialtech.net
 Web: <http://www.mondialtech.net>



Vasto assortimento di Cuscinetti SKF - FAG

d1 (mm)	d (mm)	d2 (mm)	B (mm)	B1 (mm)	B2 (mm)	Filetto (mm)	Peso - Weight (Kg)	Codice - Code	Ghiera di bloccaggio	Dispositivo di sicurezza	G1 (mm)	A (mm)	Codice
		350	224	41	-	TR 280x4	27,000	H 2356	HM 56T	MB 56	M 6	4,2	OH 2356
280	300	360	140	42	54	TR 300x4	17,100	H 3960	HM 3060	MS 3060	M 6	4,2	OH 3960
		360	168	42	54	TR 300x4	20,500	H 3060	HM 3060	MS 3060	M 6	4,2	OH 3060
		380	208	40	53	TR 300x4	29,000	H 3160	HM 3160	MS 3160	M 6	4,2	OH 3160
		380	240	40	53	TR 300x4	32,000	H 3260	HM 3160	MS 3160	M 6	4,2	OH 3260
300	320	380	140	42	55	TR 320x5	18,000	H 3964	HM 3064	MS 3064	M 6	4	OH 3964
		380	171	42	55	TR 320x5	22,000	H 3064	HM 3064	MS 3064	M 6	4	OH 3064
		400	226	42	56	TR 320x5	32,000	H 3164	HM 3164	MS 3164	M 6	4	OH 3164
		400	258	42	56	TR 320x5	35,000	H 3264	HM 3164	MS 3164	M 6	4	OH 3264
320	340	400	144	45	58	TR 340x5	20,800	H 3968	HM 3068	MS 3068	M 6	4	OH 3968
		400	187	45	58	TR 340x5	27,000	H 3068	HM 3068	MS 3068	M 6	4	OH 3068
		440	254	55	72	TR 340x5	50,000	H 3168	HM 3168	MS 3168	M 6	4	OH 3168
		440	288	55	72	TR 340x5	51,500	H 3268	HM 3168	MS 3168	M 6	4	OH 3268
340	360	420	144	45	58	TR 360x5	22,200	H 3972	HM 3072	MS 3072	M 6	4	OH 3972
		420	188	45	58	TR 360x5	29,000	H 3072	HM 3072	MS 3072	M 6	4	OH 3072
		460	259	58	75	TR 360x5	56,000	H 3172	HM 3172	MS 3172	M 6	4	OH 3172
		460	299	58	75	TR 360x5	60,500	H 3272	HM 3172	MS 3172	M 6	4	OH 3272
360	380	450	164	48	62	TR 380x5	30,200	H 3976	HM 3076	MS 3076	M 6	4	OH 3976
		450	193	48	62	TR 380x5	35,500	H 3076	HM 3076	MS 3076	M 6	4	OH 3076
		490	264	60	77	TR 380x5	61,500	H 3176	HM 3176	MS 3176	M 6	4	OH 3176
		490	310	60	77	TR 380x5	69,500	H 3276	HM 3176	MS 3176	M 6	4	OH 3276
380	400	470	168	52	66	TR 400x5	32,000	H 3980	HM 3080	MS 3080	M 6	4	OH 3980
		470	210	52	66	TR	40,000	H 3080	HM 3080	MS 3080	M 6	4	OH 3080



MONDIALTECH

Forniture Industriali

Via Raimondo Dalla Costa 240/b
 41100 MODENA - ITALY
 Tel. +39 059 250090 Fax. +39 059 260083
 Codice R.E.A. 354046
 Partita IVA E Codice Fiscale: 03061810366
 e-Mail: monditecinfo@mondialtech.net
 Web: <http://www.mondialtech.net>



Vasto assortimento di Cuscinetti SKF - FAG

d1 (mm)	d (mm)	d2 (mm)	B (mm)	B1 (mm)	B2 (mm)	Filetto (mm)	Peso - Weight (Kg)	Codice - Code	Ghiera di bloccaggio	Dispositivo di sicurezza	G1 (mm)	A (mm)	Codice
						400x5							
		520	272	62	82	TR 400x5	73,000	H 3180	HM 3180	MS 3180	M 6	4	OH 3180
		520	328	62	82	TR 400x5	81,000	H 3280	HM 3180	MS 3180	M 6	4	OH 3280
400	420	490	168	52	66	TR 420x5	37,200	H 3984	HM 3084	MS 3084	M 6	4	OH 3984
		490	212	52	66	TR 420x5	47,000	H 3084	HM 3084	MS 3084	M 6	4	OH 3084
		540	304	70	90	TR 420x5	80,000	H 3184	HM 3184	MS 3184	M 6	4	OH 3184
		540	352	70	90	TR 420x5	94,000	H 3284	HM 3184	MS 3184	M 6	4	OH 3284
410	440	520	189	60	77	TR 440x5	53,900	H 3988	HM 3088	MS 3088	M 8	6,5	OH 3988
		520	228	60	77	TR 440x5	65,000	H 3088	HM 3088	MS 3088	M 8	6,5	OH 3088
		560	307	70	92	TR 440x5	95,000	H 3188	HM 3188	MS 3188	M 8	6,5	OH 3188
		560	361	70	92	TR 440x5	118,000	H 3288	HM 3188	MS 3188	M 8	6,5	OH 3288
430	460	540	189	60	77	TR 460x5	57,300	H 3992	HM 3092	MS 3092	M 8	6,5	OH 3992
		540	234	60	77	TR 460x5	71,000	H 3092	HM 3092	MS 3092	M 8	6,5	OH 3092
		580	326	75	95	TR 460x5	119,000	H 3192	HM 3192	MS 3192	M 8	6,5	OH 3192
		580	382	75	95	TR 460x5	132,000	H 3292	HM 3192	MS 3192	M 8	6,5	OH 3292
450	480	560	200	60	77	TR 480x5	63,300	H 3996	HM 3096	MS 3096	M 8	6,5	OH 3996
		560	237	60	77	TR 480x5	75,000	H 3096	HM 3096	MS 3096	M 8	6,5	OH 3096
		620	335	75	95	TR 480x5	135,000	H 3196	HM 3196	MS 3196	M 8	6,5	OH 3196
		620	397	75	95	TR 480x5	152,000	H 3296	HM 3196	MS 3196	M 8	6,5	OH 3296
470	500	580	208	68	85	TR 500x5	73,000	H 39/500	HM 30/500	MS 30/500	M 8	6,5	OH 39/500
		580	247	68	85	TR 500x5	82,000	H 30/500	HM 30/500	MS 30/500	M 8	6,5	OH 30/500
		630	356	80	100	TR 500x5	145,000	H 31/500	HM 31/500	MS 31/500	M 8	6,5	OH 31/500
		630	428	80	100	TR 500x5	166,000	H 32/500	HM 31/500	MS 31/500	M 8	6,5	OH 32/500



MONDIALTECH

Forniture Industriali

Via Raimondo Dalla Costa 240/b
 41100 MODENA - ITALY
 Tel. +39 059 250090 Fax: +39 059 260083
 Codice R.E.A. 354046
 Partita IVA E Codice Fiscale: 03061810366
 e-Mail: monditecinfo@mondialtech.net
 Web: <http://www.mondialtech.net>



Vasto assortimento di Cuscinetti SKF - FAG

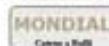
d1 (mm)	d (mm)	d2 (mm)	B (mm)	B1 (mm)	B2 (mm)	Filetto (mm)	Peso - Weight (Kg)	Codice - Code	Ghiera di bloccaggio	Dispositivo di sicurezza	G1 (mm)	A (mm)	Codice
500	530	630	216	68	90	TR 530x6	87,000	H 39/530	HM 30/530	MS 30/530	M 8	6,5	OH 39/530
		630	265	68	90	TR 530x6	105,000	H 30/530	HM 30/530	MS 30/530	M 8	6,5	OH 30/530
		670	364	80	100	TR 530x6	-	H 31/530	HM 31/530	MS 31/530	M 8	6,5	OH 31/530
		670	447	80	100	TR 530x6	-	H 32/530	HM 31/530	MS 31/530	M 8	6,5	OH 32/530
530	560	650	227	75	95	TR 560x6	94,000	H 39/560	HM 30/560	MS 30/560	M 8	6,5	OH 39/560
		650	282	75	95	TR 560x6	110,000	H 30/560	HM 30/560	MS 30/560	M 8	6,5	OH 30/560
		710	377	85	105	TR 560x6	-	H 31/560	HM 31/560	MS 31/560	M 8	6,5	OH 31/560
560	600	700	239	75	95	TR 600x6	127,000	H 39/600	HM 30/600	MS 30/600	G 1/8	6	OH 39/600
		700	295	75	95	TR 600x6	146,000	H 30/600	HM 30/600	MS 30/600	G 1/8	6	OH 30/600
		750	399	85	105	TR 600x6	-	H 31/600	HM 31/600	MS 31/600	G 1/8	6	OH 31/600
600	630	730	254	75	95	TR 630x6	145,000	H 39/630	HM 30/630	MS 30/630	M 8	6,5	OH 39/630
		730	301	75	95	TR 630x6	166,000	H 30/630	HM 30/630	MS 30/630	M 8	6,5	OH 30/630
		800	424	95	115	TR 630x6	-	H 31/630	HM 31/630	MS 31/630	M 8	6,5	OH 31/630
630	670	780	264	80	100	TR 670x6	163,000	H 39/670	HM 30/670	MS 30/610	G 1/8	10	OH 39/670
		780	324	80	100	TR 670x6	191,000	H 30/670	HM 30/670	MS 30/670	G 1/8	10	OH 30/670
		850	456	106	126	TR 670x6	-	H 31/670	HM 31/670	MS 31/670	G 1/8	10	OH 31/670
670	710	830	286	90	110	TR 710x7	196,000	H 39/710	HM 30/710	MS 30/710	G 1/8	10	OH 39/710
		830	342	90	110	TR 710x7	223,000	H 30/710	HM 30/710	MS 30/710	G 1/8	10	OH 30/710
710	750	870	291	90	110	TR 750x7	209,000	H 39/750	HM 30/750	MS 30/750	G 1/8	10	OH 39/750
		870	356	90	110	TR 750x7	-	H 30/750	HM 30/750	MS 30/750	G 1/8	10	OH 30/750
750	800	920	303	90	110	TR 800x7	258,000	H 39/800	HM 30/800	MS 30/800	G 1/8	10	OH 39/800
		920	366	90	110	TR 800x7	300,000	H 30/800	HM 30/800	MS 30/800	G 1/8	10	OH 30/800
800	850	980	308	90	110	TR	289,000	H 39/850	HM 30/850	MS 30/850	G 1/8	10	OH



MONDIALTECH

Forniture Industriali

Via Raimondo Dalla Costa 240/b
 41100 MODENA - ITALY
 Tel. +39 059 256090 Fax: +39 059 260883
 Codice R.E.A. 354046
 Partita IVA E Codice Fiscale: 03661810366
 e-Mail: mondialtech@mondialtech.net
 Web: <http://www.mondialtech.net>



Vasto assortimento di Cuscinetti SKF - FAG

d1 (mm)	d (mm)	d2 (mm)	B (mm)	B1 (mm)	B2 (mm)	Filetto (mm)	Peso - Weight (Kg)	Codice - Code	Ghiera di bloccaggio	Dispositivo di sicurezza	G1 (mm)	A (mm)	Codice
						850x7							39/850
		980	380	90	110	TR 850x7	-	H 30/850	HM 30/850	MS 30/850	G 1/8	10	OH 30/850
850	900	1030	326	100	110	TR 900x7	330,000	H 39/900	HM 30/900	MS 30/900	G 1/8	10	OH 39/900
		1030	400	100	110	TR 900x7	387,000	H 30/900	HM 30/900	MS 30/900	G 1/8	10	OH 30/900

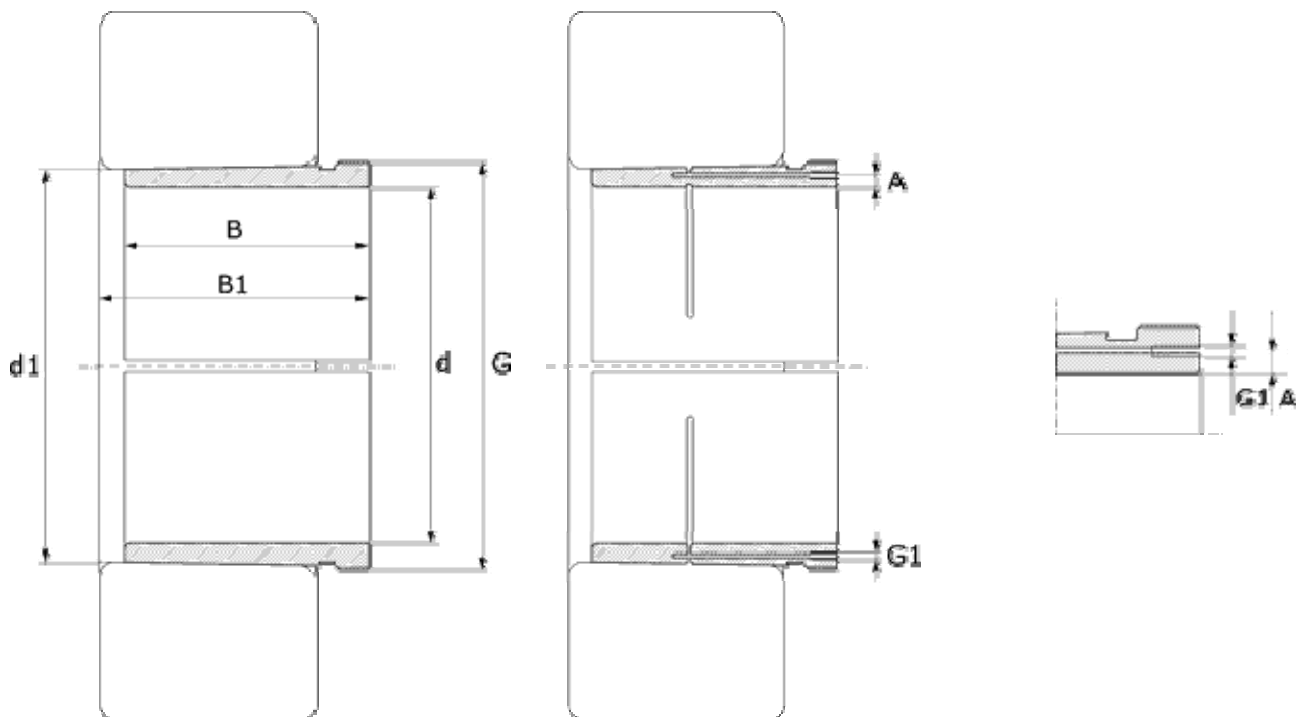


MONDIALTECH

Forniture Industriali

Via Raimondo Dalla Costa 240/b
41100 MODENA - ITALY
Tel. +39 059 250090 Fax. +39 059 260083
Codice R.E.A. 354046
Partita IVA E. Codice Fiscale: 03061810366
e-Mail: mondialtech@mondialtech.net
Web: <http://www.mondialtech.net>

Vasto assortimento di Cuscinetti SKF - FAG



Bussola di pressione standard – Tapper Looked Standard

Bussola di pressione con impianto ad olio – Tapper Looked with oil sistem

Serie - Series AH-AOH

d (mm)	d1 (mm)	B (mm)	B1 (mm)	G-Filettatura (mm)	Peso - Weight (Kg)	Codice - Code	Ghiera di smontaggio	G1 (mm)	A (mm)	Codice
35	40	25	27	M 45x1,5	0,090	AH 208	KM 9			
		29	32	M 45x1,5	0,090	AH 308	KM 9			
		40	43	M 45x1,5	0,130	AH 2308	KM 9			
40	45	26	29	M 50x1,5	0,100	AH 209	KM 10			
		31	34	M 50x1,5	0,120	AH 309	KM 10			
		44	47	M 50x1,5	0,160	AH 2309	KM 10			
45	50	28	31	M 55x2	0,130	AH 210	KM 11			
		35	38	M 55x2	0,130	AHX 310	KM 11			
		50	53	M 55x2	0,190	AHX 2310	KM 11			
50	55	29	32	M 60x2	0,150	AH 211	KM 12			
		37	40	M 60x2	0,160	AHX 311	KM 12			
		54	57	M 60x2	0,260	AHX 2311	KM 12			
55	60	32	35	M 65x2	0,170	AH 212	KM 13			
		40	43	M 65x2	0,190	AHX 312	KM 13			
		58	61	M 65x2	0,300	AHX 2312	KM 13			



MONDIALTECH

Forniture Industriali

Via Raimondo Dalla Costa 240/b
41100 MODENA - ITALY
Tel. +39 059 250090 Fax: +39 059 260083
Codice R.E.A. 354046
Partita IVA E Codice Fiscale: 03061810366
e-Mail: monditecinfo@mondialtech.net
Web: <http://www.mondialtech.net>



Vasto assortimento di Cuscinetti SKF - FAG

d (mm)	d1 (mm)	B (mm)	B1 (mm)	G- Filettatura (mm)	Peso - Weight (Kg)	Codice - Code	Ghiera di smontaggio	G1 (mm)	A (mm)	Codice
60	65	32,5	36	M 70x2	0,240	AH 213 G	KM 14			
		42	45	M 70x2	0,250	AH 313 G	KM 14			
		61	64	M 70x2	0,390	AH 2313 G	KM 14			
65	70	33,5	37	M 75x2	0,250	AH 214 G	KM 15			
		43	47	M 75x2	0,280	AH 314 G	KM 15			
		64	68	M 75x2	0,450	AHX 2314 G	KM 15			
70	75	34,5	38	M 85x2	0,280	AH 215 G	KM 16			
		45	49	M 85x2	0,310	AH 315 G	KM 16			
		68	72	M 85x2	0,530	AHX 2315 G	KM 16			
75	80	35,5	39	M 90x2	0,310	AH 216	KM 18			
		48	52	M 90x2	0,370	AH 316	KM 18			
		71	75	M 90x2	0,570	AHX 2316	KM 18			
80	85	38,5	42	M 95x2	0,350	AH 217	KM 19			
		52	56	M 95x2	0,430	AHX 317	KM 19			
		74	78	M 95x2	0,650	AHX 2317	KM 19			
85	90	40	44	M 100x2	0,430	AH 218	KM 20			
		53	57	M 100x2	0,460	AHX 318	KM 20			
		63	67	M 100x2	0,570	AHX 3218	KM 20			
		79	83	M 100x2	0,760	AHX 2318	KM 20			
90	95	43	47	M 105x2	0,480	AH 219	KM 21			
		57	61	M 105x2	0,540	AHX 319	KM 21			
		67	70,5	M 105x2	0,650	AHX 3219	KM 21			
		85	89	M 105x2	0,900	AHX 2319	KM 21			
95	100	45	49	M 110x2	0,520	AH 220	KM 22			
		59	63	M 110x2	0,580	AHX 320	KM 22			
		64	68	M 110x2	0,660	AHX 3120	KM 22			
		73	77	M 110x2	0,760	AHX 3220	KM 22			
		90	94	M 110x2	1,000	AHX 2320	KM 22			
100	105	47	51	M 115x2	0,600	AH 221	KM 23			
		68	72	M 120x2	0,600	AHX 3121	KM 24			
		78	82	M 120x2	0,700	AHX 3221	KM 24			
		94	98	M 120x2	0,900	AHX 2321	KM 24			
105	110	50	54	M 120x2	0,650	AH 222	KM 24			
		63	67	M 120x2	0,660	AHX 322	KM 24			
		68	72	M 120x2	0,760	AHX 3122	KM 24			
		82	91	M 115x2	0,710	AH 24122	KM 23			
		82	86	M 120x2	1,050	AHX 3222 G	KM 24			
		98	102	M 120x2	1,350	AHX 2322 G	KM 24			



MONDIALTECH

Forniture Industriali

Via Raimondo Dalla Costa 240/b
 41100 MODENA - ITALY
 Tel. +39 059 250090 Fax: +39 059 240083
 Codice R.E.A. 354046
 Partita IVA E Codice Fiscale: 03061810366
 e-Mail: monditecinfo@mondialtech.net
 Web: <http://www.mondialtech.net>



Vasto assortimento di Cuscinetti SKF - FAG

d (mm)	d1 (mm)	B (mm)	B1 (mm)	G-Filettatura (mm)	Peso - Weight (Kg)	Codice - Code	Ghiera di smontaggio	G1 (mm)	A (mm)	Codice
115	120	53	57	M 130x2	0,750	AH 224	KM 26			
		60	64	M 130x2	0,730	AHX 3024	KM 26			
		69	73	M 130x2	0,860	AHX 324	KM 26			
		73	82	M 125x2	0,700	AH 24024	KM 25			
		75	79	M 130x2	0,940	AHX 3124	KM 26			
		90	94	M 130x2	1,300	AHX 3224 G	KM 26			
		93	102	M 130x2	1,000	AH 24124	KM 26			
		105	109	M 130x2	1,650	AHX 2324 G	KM 26			
125	130	53	57	M 140x2	0,810	AH 226	KM 28			
		67	71	M 140x2	0,910	AHX 3026	KM 28			
		74	78	M 140x2	1,020	AHX 326	KM 28			
		78	82	M 140x2	1,100	AHX 3126	KM 28			
		83	93	M 135x2	0,880	AH 24026	KM 27			
		94	104	M 140x2	1,150	AH 24126	KM 28			
		98	102	M 140x2	1,550	AHX 3226 G	KM 28			
		115	119	M 140x2	2,000	AHX 2326 G	KM 28			
135	140	56	61	M 150x2	1,000	AH 228	KM 30			
		68	73	M 150x2	1,000	AHX 3028	KM 30			
		77	82	M 150x2	1,160	AHX 328	KM 30			
		83	88	M 150x2	1,300	AHX 3128	KM 30			
		83	93	M 145x2	0,950	AH 24028	KM 29			
		99	109	M 150x2	1,300	AH 24128	KM 30			
		104	109	M 150x2	1,850	AHX 3228 G	KM 30			
		125	130	M 150x2	2,350	AHX 2328 G	KM 30			
145	150	60	65	M 160x3	1,150	AH 230	KM 32			
		72	77	M 160x3	1,150	AHX 3030	KM 32			
		83	88	M 160x3	1,500	AHX 330 G	KM 32			
		90	101	M 155x3	1,050	AH 24030	KM 31			
		96	101	M 160x3	1,800	AHX 3130 G	KM 32			
		114	119	M 160x3	2,200	AHX 3230 G	KM 32			
		115	126	M 160x3	1,550	AH 24130	KM 32			
		135	140	M 160x3	2,800	AHX 2330 G	KM 32			
150	160	64	69	M 170x3	1,910	AH 232	KM 34			
		77	82	M 170x3	2,050	AH 3032	KM 34			
		88	93	M 170x3	2,690	AH 332 G	KM 34			
		95	106	M 170x3	2,300	AH 24032	KM 34			
		103	108	M 170x3	3,200	AH 3132 G	KM 34			
		124	135	M 170x3	3,050	AH 24132	KM 34			



MONDIALTECH

Forniture Industriali

Via Raimondo Dalla Costa 240/b
 41100 MODENA - ITALY
 Tel. +39 059 256090 Fax: +39 059 260083
 Codice R.E.A. 354046
 Partita IVA E Codice Fiscale: 03661810366
 e-Mail: monditecinfo@mondialtech.net
 Web: <http://www.mondialtech.net>



Vasto assortimento di Cuscinetti SKF - FAG

d (mm)	d1 (mm)	B (mm)	B1 (mm)	G-Filettatura (mm)	Peso - Weight (Kg)	Codice - Code	Ghiera di smontaggio	G1 (mm)	A (mm)	Codice
		124	130	M 170x3	4,000	AH 3232 G	KM 34			
		140	146	M 170x3	4,650	AH 2332 G	KM 34			
160	170	59	64	M 180x3	1,890	AH 3934	KM 36			
		69	74	M 180x3	2,210	AH 234	KM 36			
		85	90	M 180x3	2,400	AH 3034	KM 36			
		93	98	M 180x3	3,070	AH 334 G	KM 36			
		104	109	M 180x3	3,450	AH 3134 G	KM 36			
		106	117	M 180x3	2,700	AH 24034	KM 36			
		125	136	M 180x3	3,250	AH 24134	KM 36			
		134	140	M 180x3	4,800	AH 3234 G	KM 36			
		146	152	M 180x3	5,250	AH 2334 G	KM 36			
170	180	66	71	M 190x3	2,240	AH 3936	KM 38			
		69	74	M 190x3	2,340	AH 236	KM 38			
		92	98	M 190x3	2,800	AH 3036	KM 38			
		105	110	M 190x3	3,750	AH 2236 G	KM 38			
		116	127	M 190x3	3,200	AH 24036	KM 38			
		116	122	M 190x3	4,250	AH 3136 G	KM 38			
		134	145	M 190x3	3,750	AH 24136	KM 38			
		140	146	M 190x3	5,250	AH 3236 G	KM 38			
		154	160	M 190x3	6,050	AH 2336 G	KM 38			
180	190	66	71	M 200x3	2,620	AH 3938	KM 40			
		73	78	M 200x3	2,900	AH 238	KM 40			
		96	102	M 200x3	3,400	AH 3038 G	KM 40			
		112	117	M 200x3	4,250	AH 2238 G	KM 40			
		118	131	M 200x3	3,550	AH 24038	KM 40			
		125	131	M 200x3	4,900	AH 3138 G	KM 40			
		145	152	M 200x3	5,900	AH 3238 G	KM 40			
		146	159	M 200x3	4,450	AH 24138	KM 40			
		160	167	M 200x3	6,700	AH 2338 G	KM 40			
190	200	77	83	TR 210x4	3,120	AH 3940	HM 42T			
		77	82	TR 210x4	3,120	AH 240	HM 42T			
		102	108	TR 210x4	3,850	AH 3040 G	HM 42T			
		118	123	TR 220x4	4,700	AH 2240	HM 3044			
		127	140	TR 210x4	4,000	AH 24040	HM 42T			
		134	140	TR 220x4	5,650	AH 3140	HM 3044			
		153	160	TR 220x4	6,600	AH 3240	HM 3044			
		158	171	TR 210x4	5,050	AH 24140	HM 42T			
		170	177	TR 220x4	7,600	AH 2340	HM 3044			



MONDIALTECH

Forniture Industriali

Via Raimondo Dalla Costa 240/b
41100 MODENA - ITALY
Tel. +39 059 250090 Fax: +39 059 260083
Codice R.E.A. 354046
Partita IVA E Codice Fiscale: 03061810366
e-Mail: monditecinfo@mondialtech.net
Web: <http://www.mondialtech.net>



Vasto assortimento di Cuscinetti SKF - FAG

d (mm)	d1 (mm)	B (mm)	B1 (mm)	G-Filettatura (mm)	Peso - Weight (Kg)	Codice - Code	Ghiera di smontaggio	G1 (mm)	A (mm)	Codice
200	220	77	83	TR 230x4	5,500	AH 3944	HM 46T	G 1/8	7,5	AOH 3944
		85	91	TR 230x4	6,100	AH 244	HM 46T	G 1/8	7,5	AOH 244
		111	117	TR 230x4	7,500	AH 3044 G	HM 46T	G 1/8	7,5	AOH 3044 G
		130	136	TR 240x4	9,100	AH 2244	HM 3048	G 1/4	9	AOH 2244
		138	152	TR 230x4	8,200	AH 24044	HM 46T	G 1/8	6,5	AOH 24044
		145	151	TR 240x4	9,300	AH 3144	HM 3048	G 1/4	9	AOH 3144
		170	184	TR 230x4	10,000	AH 24144	HM 46T	G 1/8	6,5	AOH 24144
		181	189	TR 240x4	13,500	AH 2344	HM 3048	G 1/4	9	AOH 2344
220	240	77	83	TR 250x4	6,500	AH 3948	HM 50T	G 1/4	9	AOH 3948
		96	102	TR 260x4	8,200	AH 248	HM 3052	G 1/4	9	AOH 248
		116	123	TR 260x4	8,000	AH 3048	HM 3052	G 1/4	9	AOH 3048
		138	153	TR 250x4	8,100	AH 24048	HM 50T	G 1/8	6,5	AOH 24048
		144	150	TR 260x4	11,100	AH 2248	HM 3052	G 1/4	9	AOH 2248
		154	161	TR 260x4	12,000	AH 3148	HM 3052	G 1/4	9	AOH 3148
		180	195	TR 260x4	11,500	AH 24148	HM 3052	G 1/4	9	AOH 24148
		189	197	TR 260x4	14,000	AH 2348	HM 3052	G 1/4	9	AOH 2348
240	260	94	100	TR 280x4	8,800	AH 3952 G	HM 3056	G 1/4	9	AOH 3952 G
		105	111	TR 280x4	9,900	AH 252	HM 3056	G 1/4	9	AOH 252
		128	135	TR 280x4	9,600	AH 3052	HM 3056	G 1/4	9	AOH 3052
		155	161	TR 280x4	12,500	AH 2252 G	HM 3056	G 1/4	9,5	AOH 2252 G
		162	178	TR 280x4	10,500	AH 24052 G	HM 3056	G 1/8	6,5	AOH 24052 G
		172	179	TR 280x4	16,000	AH 3152 G	HM 3056	G 1/4	9,5	AOH 3152 G
		202	218	TR 280x4	14,000	AH 24152	HM 3056	G 1/4	9	AOH 24152
		205	213	TR 280x4	17,500	AH 2352 G	HM 3056	G 1/4	10,5	AOH 2352 G
260	280	94	100	TR 300x4	9,300	AH 3956 G	HM 3060	G 1/4	9	AOH 3956 G
		105	113	TR 300x4	10,400	AH 256	HM 3060	G 1/4	9	AOH 256
		131	139	TR 300x4	11,000	AH 3056	HM 3060	G 1/4	9	AOH 3056
		155	163	TR 300x4	15,000	AH 2256 G	HM 3060	G 1/4	9,5	AOH 2256 G
		162	179	TR 300x4	11,500	AH 24056 G	HM 3060	G 1/8	6,5	AOH



MONDIALTECH

Forniture Industriali

Via Raimondo Dalla Costa 240/b
41100 MODENA - ITALY
Tel. +39 059 250090 Fax: +39 059 240083
Codice R.E.A. 354046
Partita IVA E Codice Fiscale: 03061810366
e-Mail: monditecinfo@mondialtech.net
Web: <http://www.mondialtech.net>

Vasto assortimento di Cuscinetti SKF - FAG



d (mm)	d1 (mm)	B (mm)	B1 (mm)	G-Filettatura (mm)	Peso - Weight (Kg)	Codice - Code	Ghiera di smontaggio	G1 (mm)	A (mm)	Codice
										24056 G
		175	183	TR 300x4	15,500	AH 3156 G	HM 3060	G 1/4	9,5	AOH 3156 G
		202	219	TR 300x4	15,000	AH 24156	HM 3060	G 1/4	9	AOH 24156
		212	220	TR 300x4	19,500	AH 2356 G	HM 3060	G 1/4	11	AOH 2356 G
280	300	112	119	TR 320x5	10,000	AH 3960 G	HM 3064	G 1/4	9	AOH 3960 G
		145	153	TR 320x5	13,000	AH 3060	HM 3064	G 1/4	9	AOH 3060
		170	178	TR 320x5	18,000	AH 2260 G	HM 3064	G 1/4	10,5	AOH 2260 G
		184	202	TR 320x5	14,000	AH 24060 G	HM 3064	G 1/8	6,5	AOH 24060 G
		192	200	TR 320x5	19,000	AH 3160 G	HM 3064	G 1/4	10,5	AOH 3160 G
		224	242	TR 320x5	18,500	AH 24160	HM 3064	G 1/4	9	AOH 24160
		228	236	TR 320x5	23,500	AH 3260 G	HM 3064	G 1/4	11,5	AOH 3260 G
300	320	112	119	TR 340x5	10,900	AH 3964 G	HM 3068	G 1/4	9,5	AOH 3964 G
		149	157	TR 340x5	14,500	AH 3064 G	HM 3068	G 1/4	9,5	AOH 3064 G
		180	190	TR 340x5	20,000	AH 2264 G	HM 3068	G 1/4	10,5	AOH 2264 G
		184	202	TR 340x5	15,000	AH 24064 G	HM 3068	G 1/8	6,5	AOH 24064 G
		209	217	TR 340x5	22,500	AH 3164 G	HM 3068	G 1/4	10,5	AOH 3164 G
		242	260	TR 340x5	20,500	AH 24164	HM 3068	G 1/4	9	AOH 24164
		246	254	TR 340x5	27,500	AH 3264 G	HM 3068	G 1/4	12	AOH 3264 G
320	340	112	119	TR 360x5	12,100	AH 3968 G	HM 3072	G 1/4	9,5	AOH 3968 G
		162	171	TR 360x5	17,500	AH 3068 G	HM 3072	G 1/4	9,5	AOH 3068 G
		206	225	TR 360x5	18,000	AH 24068	HM 3072	G 1/4	9	AOH 24068
		225	234	TR 360x5	26,500	AH 3168 G	HM 3072	G 1/4	11	AOH 3168 G
		264	273	TR 360x5	32,000	AH 3268 G	HM 3072	G 1/4	12,5	AOH 3268 G



MONDIALTECH

Forniture Industriali

Via Raimondo Dalla Costa 240/b
 41100 MODENA - ITALY
 Tel. +39 059 250090 Fax: +39 059 260083
 Codice R.E.A. 354046
 Partita IVA E Codice Fiscale: 03061810366
 e-Mail: monditecinfo@mondialtech.net
 Web: <http://www.mondialtech.net>



Vasto assortimento di Cuscinetti SKF - FAG

d (mm)	d1 (mm)	B (mm)	B1 (mm)	G- Filettatura (mm)	Peso - Weight (Kg)	Codice - Code	Ghiera di smontaggio	G1 (mm)	A (mm)	Codice
		269	288	TR 360x5	25,500	AH 24168	HM 3072	G 1/4	9	AOH 24168
340	360	112	119	TR 380x5	12,700	AH 3972 G	HM 3076	G 1/4	9,5	AOH 3972 G
		167	176	TR 380x5	19,000	AH 3072 G	HM 3076	G 1/4	9,5	AOH 3072 G
		206	226	TR 380x5	20,000	AH 24072	HM 3076	G 1/4	9	AOH 24072
		229	238	TR 380x5	30,000	AH 3172 G	HM 3076	G 1/4	11	AOH 3172 G
		269	289	TR 380x5	26,000	AH 24172	HM 3076	G 1/4	9	AOH 24172
		274	283	TR 380x5	33,000	AH 3272 G	HM 3076	G 1/4	13	AOH 3272 G
360	380	130	138	TR 400x5	18,000	AH 3976 G	HM 3080	G 1/4	9,5	AOH 3976 G
		170	180	TR 400x5	23,500	AH 3076 G	HM 3080	G 1/4	9,5	AOH 3076 G
		208	228	TR 400x5	23,500	AH 24076	HM 3080	G 1/4	9	AOH 24076
		232	242	TR 400x5	36,000	AH 3176 G	HM 3080	G 1/4	11	AOH 3176 G
		271	291	TR 400x5	31,000	AH 24176	HM 3080	G 1/4	9	AOH 24176
		284	294	TR 400x5	45,500	AH 3276 G	HM 3080	G 1/4	13	AOH 3276 G
380	400	130	138	TR 420x5	19,200	AH 3980 G	HM 3084	G 1/4	10	AOH 3980 G
		183	193	TR 420x5	27,000	AH 3080 G	HM 3084	G 1/4	10	AOH 3080 G
		228	248	TR 420x5	27,000	AH 24080	HM 3084	G 1/4	9	AOH 24080
		240	250	TR 420x5	39,500	AH 3180 G	HM 3084	G 1/4	11,5	AOH 3180 G
		278	298	TR 420x5	35,000	AH 24180	HM 3084	G 1/4	9	AOH 24180
		302	312	TR 420x5	51,500	AH 3280 G	HM 3084	G 1/4	14	AOH 3280 G
400	420	130	138	TR 440x5	20,300	AH 3984 G	HM 3088	G 1/4	10	AOH 3984 G
		186	196	TR 440x5	29,000	AH 3084 G	HM 3088	G 1/4	10	AOH 3084 G
		230	252	TR 440x5	29,000	AH 24084	HM 3088	G 1/4	9	AOH 24084
		266	276	TR 440x5	46,000	AH 3184 G	HM 3088	G 1/4	12,5	AOH 3184



MONDIALTECH

Forniture Industriali

Via Raimondo Dalla Costa 240/b
41100 MODENA - ITALY
Tel. +39 059 250090 Fax: +39 059 260083
Codice R.E.A. 354046
Partita IVA E Codice Fiscale: 03061810366
e-Mail: monditecinfo@mondialtech.net
Web: <http://www.mondialtech.net>



Vasto assortimento di Cuscinetti SKF - FAG

d (mm)	d1 (mm)	B (mm)	B1 (mm)	G-Filettatura (mm)	Peso - Weight (Kg)	Codice - Code	Ghiera di smontaggio	G1 (mm)	A (mm)	Codice
										G
		310	332	TR 440x5	39,000	AH 24184	HM 3088	G 1/4	9	AOH 24184
		321	331	TR 440x5	59,000	AH 3284 G	HM 3088	G 1/4	14	AOH 3284 G
420	440	145	153	TR 460x5	23,900	AH 3988	HM 3092	G 1/4	9	AOH 3988
		194	205	TR 460x5	32,000	AHX 3088 G	HM 3092	G 1/4	9	AOHX 3088 G
		242	264	TR 460x5	32,000	AH 24088	HM 3092	G 1/4	9	AOH 24088
		270	281	TR 460x5	50,000	AHX 3188 G	HM 3092	G 1/4	9	AOHX 3188 G
		310	332	TR 460x5	45,500	AH 24188	HM 3092	G 1/4	9	AOH 24188
		330	341	TR 460x5	64,000	AH 3288 G	HM 3092	G 1/4	9	AOH 3288 G
440	460	145	153	TR 480x5	25,100	AH 3992	HM 3096	G 1/4	9	AOH 3992
		202	213	TR 480x5	35,000	AHX 3092 G	HM 3096	G 1/4	9	AOHX 3092 G
		285	296	TR 480x5	58,000	AHX 3192 G	HM 3096	G 1/4	9	AOHX 3192 G
		332	355	TR 480x5	50,000	AH 24192	HM 3096	G 1/4	9	AOH 24192
		349	360	TR 480x5	74,500	AH 3292 G	HM 3096	G 1/4	9	AOH 3292 G
		250	273	TR 480x5	35,000	AH 24092	HM 3096	G 1/4	9	AOH 24092
460	480	158	167	TR 500x5	30,100	AH 3996	HM 30/500	G 1/4	9	AOH 3996
		205	217	TR 500x5	39,000	AHX 3096 G	HM 30/500	G 1/4	9	AOHX 3096 G
		250	273	TR 500x5	37,000	AH 24096	HM 30/500	G 1/4	9	AOH 24096
		295	307	TR 500x5	63,000	AHX 3196 G	HM 30/500	G 1/4	9	AOHX 3196 G
		340	363	TR 500x5	51,500	AH 24196	HM 30/500	G 1/4	9	AOH 24196
		364	376	TR 500x5	82,000	AH 3296 G	HM 30/500	G 1/4	9	AOH 3296 G
480	500	162	172	TR 530x6	28,000	AH 39/500 G	HM 30/530	G 1/4	10	AOH 39/500
		209	221	TR 530x6	43,000	AHX 30/500	HM 30/530	G 1/4	10	AOHX 30/500
		253	276	TR 530x6	42,000	AH 240/500	HM 30/530	G 1/4	10	AOH 240/500



MONDIALTECH

Forniture Industriali

Via Raimondo Dalla Costa 240/b
41100 MODENA - ITALY
Tel. +39 059 250090 Fax: +39 059 260083
Codice R.E.A. 354046
Partita IVA E Codice Fiscale: 03061810366
e-Mail: monditecinfo@mondialtech.net
Web: <http://www.mondialtech.net>

Vasto assortimento di Cuscinetti SKF - FAG



d (mm)	d1 (mm)	B (mm)	B1 (mm)	G-Filettatura (mm)	Peso - Weight (Kg)	Codice - Code	Ghiera di smontaggio	G1 (mm)	A (mm)	Codice
		313	325	TR 530x6	71,000	AHX 31/500	HM 30/530	G 1/4	10	AOHX 31/500
		360	383	TR 530x6	57,000	AH 241/500	HM 30/530	G 1/4	10	AOH 241/500
		393	405	TR 530x6	95,000	AH 32/500 G	HM 30/530	G 1/4	10	AOH 32/500
500	530	175	185	TR 560x6	43,000	AH 39/530 G	HM 30/560	G 1/4	10	AOH 39/530
		230	242	TR 560x6	57,000	AH 30/530	HM 30/560	G 1/4	10	AOH 30/530
		285	309	TR 560x6	70,000	AH 240/530	HM 30/560	G 1/4	10	AOH 240/530
		325	337	TR 560x6	80,000	AH 31/530	HM 30/560	G 1/4	10	AOH 31/530
		370	394	TR 560x6	91,000	AH 241/530	HM 30/560	G 1/4	10	AOH 241/530
530	560	180	190	TR 600x6	48,000	AH 39/560 G	HM 30/600	G 1/4	10	AOH 39/560
		240	252	TR 600x6	64,000	AH 30/560 G	HM 30/600	G 1/4	10	AOH 30/560
		296	320	TR 600x6	79,000	AH 240/560	HM 30/600	G 1/4	10	AOH 240/560
		325	337	TR 600x6	87,000	AH 31/560 G	HM 30/600	G 1/4	10	AOH 31/560
		393	417	TR 600x6	105,000	AH 241/560	HM 30/600	G 1/4	10	AOH 241/560
		412	424	TR 600x6	110,000	AH 32/560 G	HM 30/600	G 1/4	10	AOH 32/560
570	600	192	202	TR 630x6	56,000	AH 39/600 G	HM 30/630	G 1/4	12	AOH 39/600
		245	259	TR 630x6	72,000	AH 30/600	HM 30/630	G 1/4	12	AOH 30/600
		310	336	TR 630x6	90,000	AH 240/600	HM 30/630	G 1/4	12	AOH 240/600
		355	369	TR 630x6	104,000	AH 31/600	HM 30/630	G 1/4	12	AOH 31/600
		413	439	TR 630x6	121,000	AH 241/600	HM 30/630	G 1/4	12	AOH 241/600
		445	459	TR 630x6	130,000	AH 32/600	HM 30/630	G 1/4	12	AOH 32/600
600	630	210	222	TR 670x6	63,000	AH 39/630 G	HM 30/670	G 1/4	12	AOH 39/630
		258	272	TR 670x6	77,000	AH 30/630	HM 30/670	G 1/4	12	AOH 30/630
		330	356	TR 670x6	99,000	AH 240/630	HM 30/670	G 1/4	12	AOH



MONDIALTECH

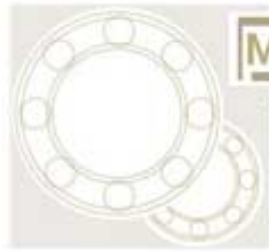
Forniture Industriali

Via Raimondo Dalla Costa 240/b
41100 MODENA - ITALY
Tel. +39 059 250090 Fax: +39 059 240083
Codice R.E.A. 354046
Partita IVA E Codice Fiscale: 03661810366
e-Mail: monditecinfo@mondialtech.net
Web: <http://www.mondialtech.net>



Vasto assortimento di Cuscinetti SKF - FAG

d (mm)	d1 (mm)	B (mm)	B1 (mm)	G- Filettatura (mm)	Peso - Weight (Kg)	Codice - Code	Ghiera di smontaggio	G1 (mm)	A (mm)	Codice
										240/630
		375	389	TR 670x6	113,000	AH 31/630	HM 30/670	G 1/4	12	AOH 31/630
		440	466	TR 670x6	132,000	AH 241/630	HM 30/670	G 1/4	12	AOH 241/630
		475	489	TR 670x6	143,000	AH 32/630	HM 30/670	G 1/4	12	AOH 32/630
630	670	216	228	TR 710x7	86,000	AH 39/670 G	HM 30/710	G 1/4	12	AOH 39/670
		280	294	TR 710x7	112,000	AH 30/670	HM 30/710	G 1/4	12	AOH 30/670
		348	374	TR 710x7	139,000	AH 240/670	HM 30/710	G 1/4	12	AOH 240/670
		395	409	TR 710x7	157,000	AH 31/670	HM 30/710	G 1/4	12	AOH 31/670
		452	478	TR 710x7	180,000	AH 241/670	HM 30/710	G 1/4	12	AOH 241/670
		500	514	TR 710x7	199,000	AH 32/670	HM 30/710	G 1/4	12	AOH 32/670
670	710	228	240	TR 750x7	102,000	AH 39/710 G	HM 30/750	G 1/4	12	AOH 39/710
		286	302	TR 750x7	128,000	AH 30/710	HM 30/750	G 1/4	12	AOH 30/710
		360	386	TR 750x7	161,000	AH 240/710	HM 30/750	G 1/4	12	AOH 240/710
		405	421	TR 750x7	181,000	AH 31/710	HM 30/750	G 1/4	12	AOH 31/710
		483	509	TR 750x7	216,000	AH 241/710	HM 30/750	G 1/4	12	AOH 241/710
		515	531	TR 750x7	230,000	AH 32/710	HM 30/750	G 1/4	12	AOH 32/710
710	750	234	246	TR 800x7	111,000	AH 39/750 G	HM 30/800	G 1/4	15	AOH 39/750
		300	316	TR 800x7	142,000	AH 30/750	HM 30/800	G 1/4	15	AOH 30/750
		380	408	TR 800x7	180,000	AH 240/750	HM 30/800	G 1/4	15	AOH 240/750
		425	441	TR 800x7	202,000	AH 31/750	HM 30/800	G 1/4	15	AOH 31/750
		520	548	TR 800x7	247,000	AH 241/750	HM 30/800	G 1/4	15	AOH 241/750
		540	556	TR 800x7	256,000	AH 32/750	HM 30/800	G 1/4	15	AOH 32/750
750	800	245	260	TR 850x7	147,000	AH 39/800 G	HM 30/850	G 1/4	15	AOH 39/800



MONDIALTECH

Forniture Industriali

Via Raimondo Dalla Costa 240/b
 41100 MODENA - ITALY
 Tel. +39 059 250090 Fax: +39 059 260083
 Codice R.E.A. 354046
 Partita IVA E Codice Fiscale: 03061810366
 e-Mail: monditecinfo@mondialtech.net
 Web: <http://www.mondialtech.net>

Vasto assortimento di Cuscinetti SKF - FAG



d (mm)	d1 (mm)	B (mm)	B1 (mm)	G-Filettatura (mm)	Peso - Weight (Kg)	Codice - Code	Ghiera di smontaggio	G1 (mm)	A (mm)	Codice
		308	326	TR 850x7	185,000	AH 30/800	HM 30/850	G 1/4	15	AOH 30/800
		395	423	TR 850x7	237,000	AH 240/800	HM 30/850	G 1/4	15	AOH 240/800
		425	441	TR 850x7	255,000	AH 31/800	HM 30/850	G 1/4	15	AOH 31/800
		525	553	TR 850x7	315,000	AH 241/800	HM 30/850	G 1/4	15	AOH 241/800
		540	556	TR 850x7	324,000	AH 32/800	HM 30/850	G 1/4	15	AOH 32/800
800	850	258	270	TR 900x7	166,000	AH 39/850 G	HM 30/900	G 1/4	15	AOH 39/850
		325	343	TR 900x7	209,000	AH 30/850	HM 30/900	G 1/4	15	AOH 30/850
		415	445	TR 900x7	267,000	AH 240/850	HM 30/900	G 1/4	15	AOH 240/850
		462	480	TR 900x7	297,000	AH 31/850	HM 30/900	G 1/4	15	AOH 31/850
		560	600	TR 900x7	360,000	AH 241/850	HM 30/900	G 1/4	15	AOH 241/850
		585	603	TR 900x7	376,000	AH 32/850	HM 30/900	G 1/4	15	AOH 32/850
850	900	265	277	TR 950x8	182,000	AH 39/900 G	HM 30/950	G 1/4	15	AOH 39/900
		335	355	TR 950x8	230,000	AH 30/900	HM 30/950	G 1/4	15	AOH 30/900
		430	475	TR 950x8	295,000	AH 240/900	HM 30/950	G 1/4	15	AOH 240/900
		475	495	TR 950x8	326,000	AH 31/900	HM 30/950	G 1/4	15	AOH 31/900
		575	620	TR 950x8	395,000	AH 241/900	HM 30/950	G 1/4	15	AOH 241/900
		585	606	TR 950x8	402,000	AH 32/900	HM 30/950	G 1/4	15	AOH 32/900
900	950	282	297	TR 1000x8	206,000	AH 39/950 G	HM 30/1000	G 1/4	15	AOH 39/950
		355	375	TR 1000x8	259,000	AH 30/950	HM 30/1000	G 1/4	15	AOH 30/950
		467	512	TR 1000x8	341,000	AH 240/950	HM 30/1000	G 1/4	15	AOH 240/950
		500	520	TR 1000x8	365,000	AH 31/950	HM 30/1000	G 1/4	15	AOH 31/950
		600	620	TR 1000x8	438,000	AH 32/950	HM 30/1000	G 1/4	15	AOH 32/950
		605	650	TR 1000x8	442,000	AH 241/950	HM 30/1000	G 1/4	15	AOH



MONDIALTECH

Forniture Industriali

Via Raimondo Dalla Costa 240/b
 41100 MODENA - ITALY
 Tel. +39 059 250090 Fax: +39 059 260083
 Codice R.E.A. 354046
 Partita IVA E Codice Fiscale: 03061810366
 e-Mail: monditecinfo@mondialtech.net
 Web: <http://www.mondialtech.net>



Vasto assortimento di Cuscinetti SKF - FAG

d (mm)	d1 (mm)	B (mm)	B1 (mm)	G- Filettatura (mm)	Peso - Weight (Kg)	Codice - Code	Ghiera di smontaggio	G1 (mm)	A (mm)	Codice
										241/950
950	1000	296	311	TR 1060x8	227,000	AH 39/1000	HM 30/1060	G 1/4	15	AOH 39/1000
		365	387	TR 1060x8	280,000	AH 30/1000	HM 30/1060	G 1/4	15	AOH 30/1000
		469	519	TR 1060x8	360,000	AH 240/1000	HM 30/1060	G 1/4	15	AOH 240/100
		525	547	TR 1060x8	403,000	AH 31/1000	HM 30/1060	G 1/4	15	AOH 31/1000
		630	652	TR 1060x8	483,000	AH 32/1000	HM 30/1060	G 1/4	15	AOH 32/1000
		645	695	TR 1000x8	495,000	AH 241/1000	HM 30/1060	G 1/4	15	AOH 241/100
1000	1060	310	325	TR 1120x8	245,000	AH 39/1060	HM 30/1120	G 1/4	15	AOH 39/1060
		385	407	TR 1120x8	304,000	AH 30/1060	HM 30/1120	G 1/4	15	AOH 30/1060
		498	548	TR 1120x8	394,000	AH 240/1060	HM 30/1120	G 1/4	15	AOH 240/106
		540	562	TR 1120x8	427,000	AH 31/1060	HM 30/1120	G 1/4	15	AOH 31/1060
		665	715	TR 1120x8	526,000	AH 241/1060	HM 30/1120	G 1/4	15	AOH 241/106

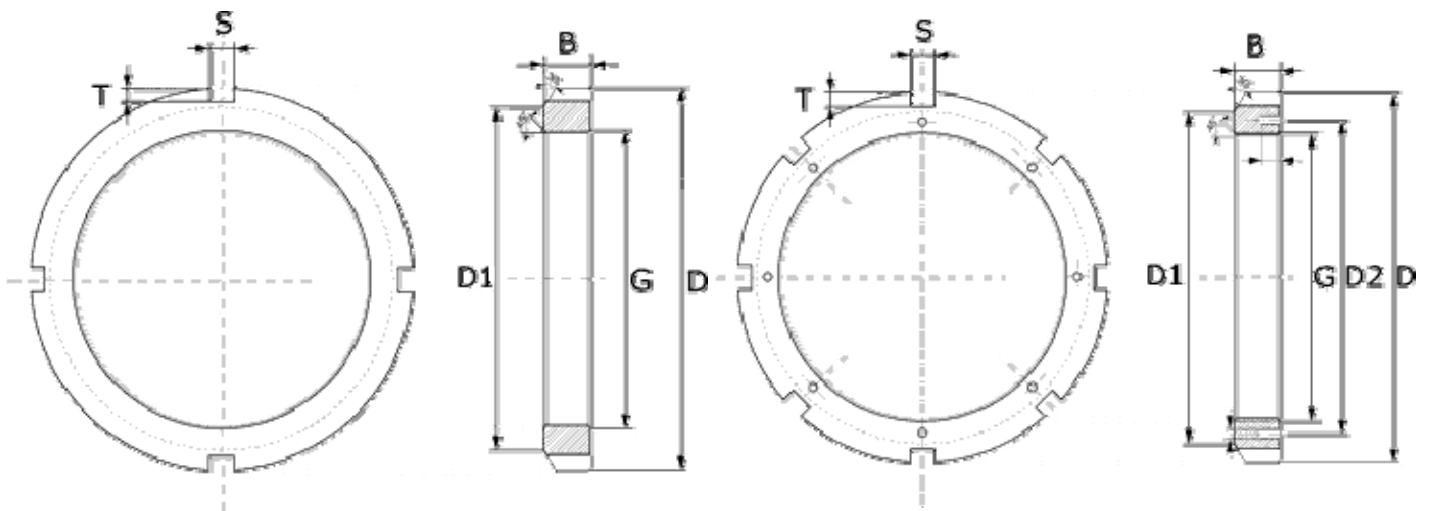


MONDIALTECH

Forniture Industriali

Via Raimondo Dalla Costa 240/b
41100 MODENA - ITALY
Tel. +39 059 250090 Fax: +39 059 260083
Codice R.E.A. 354046
Partita IVA E Codice Fiscale: 03061810366
e-Mail: monditecinfo@mondialtech.net
Web: <http://www.mondialtech.net>

Vasto assortimento di Cuscinetti SKF - FAG



Serie - Series - KM-KML

Serie - Series - HM, HML, HM 30xx, HM 31xx

Serie - Series - KM-KML

G-Filetto (mm)	D (mm)	D1 (mm)	B (mm)	S (mm)	T (mm)	Peso - Weight (Kg)	Codice - Code	Rosetta di sicurezza adatta
M 10x0,75	18	13,5	4	3	2	0,006	KM 0	MB
M 12x1	22	17	4	3	2	0,008	KM 1	MB 1
M 15x1	25	21	5	4	2	0,012	KM 2	MB 2
M 17x1	28	24	5	4	2	0,012	KM 3	MB 3
M 20x1	32	26	6	4	2	0,020	KM 4	MB 4
M 25x1,5	38	32	7	5	2	0,028	KM 5	MB 5
M 30x1,5	45	38	7	5	2	0,038	KM 6	MB 6
M 35x1,5	52	44	8	5	2	0,058	KM 7	MB 7
M 40x1,5	58	50	9	6	2,5	0,078	KM 8	MB 8
M 45x1,5	65	56	10	6	2,5	0,110	KM 9	MB 9
M 50x1,5	70	61	11	6	2,5	0,140	KM 10	MB 10
M 55x2	75	67	11	7	3	0,150	KM 11	MB 11
M 60x2	80	73	11	7	3	0,160	KM 12	MB 12



MONDIALTECH

Forniture Industriali

Via Raimondo Dalla Costa 240/b
 41100 MODENA - ITALY
 Tel. +39 059 250090 Fax: +39 059 260083
 Codice R.E.A. 354046
 Partita IVA E. Codice Fiscale: 03061810366
 e-Mail: monditecinfo@mondialtech.net
 Web: <http://www.mondialtech.net>



Vasto assortimento di Cuscinetti SKF - FAG

G-Filetto (mm)	D (mm)	D1 (mm)	B (mm)	S (mm)	T (mm)	Peso - Weight (Kg)	Codice - Code	Rosetta di sicurezza adatta
M 65x2	85	79	12	7	3	0,190	KM 13	MB 13
M 70x2	92	85	12	8	3,5	0,220	KM 14	MB 14
M 75x2	98	90	13	8	3,5	0,270	KM 15	MB 15
M 80x2	105	95	15	8	3,5	0,360	KM 16	MB 16
M 85x2	110	102	16	8	3,5	0,420	KM 17	MB 17
M 90x2	120	108	16	10	4	0,510	KM 18	MB 18
M 95x2	125	113	17	10	4	0,580	KM 19	MB 19
M 100x2	130	120	18	10	4	0,680	KM 20	MB 20
M 105x2	140	126	18	12	5	0,810	KM 21	MB 21
M 110x2	145	133	19	12	5	0,890	KM 22	MB 22
M 115x2	150	137	19	12	5	0,910	KM 23	MB 23
M 120x2	155	138	20	12	5	0,980	KM 24	MB 24
	145	135	20	12	5	0,690	KML 24	MBL 24
M 125x2	160	148	21	12	5	1,100	KM 25	MB 25
M 130x2	165	149	21	12	5	1,200	KM 26	MB 26
	155	145	21	12	5	0,840	KML 26	MBL 26
M 135x2	175	160	22	14	6	1,400	KM 27	MB 27
M 140x2	180	160	22	14	6	1,400	KM 28	MB 28
	165	155	22	14	6	0,920	KML 28	MBL 28
M 145x2	190	172	24	14	6	1,850	KM 29	MB 29
M 150x2	195	171	24	14	6	1,850	KM 30	MB 30
	180	170	24	14	6	1,300	KML 30	MBL 30
M 155x3	200	182	25	16	7	2,050	KM 31	MB 31
M 160x3	210	182	25	16	7	2,250	KM 32	MB 32
	190	180	25	16	7	1,400	KML 32	MBL 32
M 165x3	210	193	26	16	7	2,300	KM 33	MB 33
M 170x3	220	193	26	16	7	2,550	KM 34	MB 34
	200	190	26	16	7	1,600	KML 34	MBL 34
M 180x3	230	203	27	18	8	2,700	KM 36	MB 36
	210	200	27	16	5	1,800	KML 36	MBL 36
M 190x3	240	214	28	18	8	3,000	KM 38	MB 38
	220	210	28	16	5	1,900	KML 38	MBL 38
M 200x3	250	226	29	18	8	3,300	KM 40	MB 40
	240	222	29	18	8	2,600	KML 40	MBL 40



MONDIALTECH

Forniture Industriali

Via Raimondo Dalla Costa 240/b
41100 MODENA - ITALY
Tel. +39 059 250090 Fax: +39 059 260083
Codice R.E.A. 354046
Partita IVA E. Codice Fiscale: 03061810366
e-Mail: monditecinfo@mondialtech.net
Web: <http://www.mondialtech.net>

Vasto assortimento di Cuscinetti SKF - FAG



Serie – Series - HM, HML, HM 30xx, HM 31xx

G-Filetto (mm)	D (mm)	D1 (mm)	D2 (mm)	B (mm)	S (mm)	T (mm)	Peso - Weight (Kg)	Codice - Code	Rosetta/staffa di sicurezza adatta
Tr 205x4	250	232	-	30	18	8	3,20	HML 41T	-
Tr 210x4	270	238	-	30	20	10	5,10	HM 42T	-
Tr 215x4	260	242	-	30	20	9	3,30	HML 43T	-
Tr 220x4	260	242	229	30	20	9	2,75	HM 3044	MS 3044
	280	250	-	32	20	10	4,75	HM 44T	MB 44
	280	250	240	32	20	10	4,50	HM 3144	MS 3144
Tr 230x4	290	260	-	34	20	10	5,45	HM 46T	-
Tr 235x4	280	264	-	34	20	9	4,10	HML 47T	-
Tr 240x4	290	270	253	34	20	10	4,50	HM 3048	MS 3048-52
	300	270	-	34	20	10	5,60	HM 48T	MB 48
	300	270	258	34	20	10	5,20	HM 3148	MS 3148
Tr 250x4	320	290	-	36	20	10	7,45	HM 50T	-
Tr 260x4	310	290	-	34	20	10	5,80	HML 52T	-
	310	290	273	34	20	10	4,80	HM 3052	MS 3048-52
	330	300	-	36	24	12	7,55	HM 52T	MB 52
	330	300	281	36	24	12	7,00	HM 3152	MS 3152
Tr 270x4	340	310	-	38	24	12	8,30	HM 54T	-
Tr 280x4	330	310	-	38	24	10	8,65	HML 56T	-
	330	310	293	38	24	10	5,75	HM 3056	MS 3056
	350	320	-	38	24	12	8,65	HM 56T	MB 56
	350	320	301	38	24	12	8,20	HM 3156	MS 3156
Tr 290x4	370	330	-	40	24	12	10,50	HM 58T	-
Tr 300x4	360	336	-	42	24	12	8,50	HML 60T	-
	360	336	316	42	24	12	8,35	HM 3060	MS 3060
	380	340	-	40	24	12	12,00	HM 60T	-
	380	340	326	40	24	12	11,50	HM 3160	MS 3160
Tr 310x5	390	350	-	42	24	12	13,00	HM 62T	-
Tr 320x5	380	356	-	42	24	12	10,50	HML 64T	-
	380	356	336	42	24	12	9,00	HM 3064	MS 3064-68
	400	360	-	42	24	12	14,00	HM 64T	-
	400	360	346	42	24	12	13,00	HM 3164	MS 3164
Tr 330x5	420	380	-	52	28	15	20,00	HM 66T	-
Tr 340x5	400	376	356	45	24	12	11,00	HM 3068	MS 3064-68



MONDIALTECH

Forniture Industriali

Via Raimondo Dalla Costa 240/b
41100 MODENA - ITALY
Tel. +39 059 250090 Fax: +39 059 260083
Codice R.E.A. 354046
Partita IVA E. Codice Fiscale: 03061810366
e-Mail: monditecinfo@mondialtech.net
Web: <http://www.mondialtech.net>



Vasto assortimento di Cuscinetti SKF - FAG

G-Filetto (mm)	D (mm)	D1 (mm)	D2 (mm)	B (mm)	S (mm)	T (mm)	Peso - Weight (Kg)	Codice - Code	Rosetta/staffa di sicurezza adatta
	440	400	-	55	28	15	25,00	HM 68T	-
	440	400	373	55	28	15	24,00	HM 3168	MS 3168-72
Tr 345x5	410	384	-	45	28	13	13,00	HML 69T	-
Tr 350x5	450	410	-	55	28	15	25,00	HM 70T	-
Tr 360x5	420	394	-	45	28	13	12,30	HML 72T	-
	420	394	375	45	28	13	11,50	HM 3072	MS 3072
	460	420	-	58	28	15	27,50	HM 72T	-
	460	420	393	58	28	15	26,50	HM 3172	MS 3168-72
Tr 365x5	430	404	-	48	28	13	14,00	HML 73T	-
Tr 370x5	470	430	-	58	28	15	28,00	HM 74T	-
Tr 380x5	450	422	-	48	28	14	15,70	HML 76T	-
	450	422	399	48	28	14	15,00	HM 3076	MS 3076-80
	490	450	-	60	32	18	15,00	HM 76T	-
	490	450	415	60	32	18	32,00	HM 3176	MS 3176
Tr 385x5	450	422	-	48	28	14	15,00	HML 77T	-
Tr 400x5	470	452	-	52	28	14	17,70	HML 80T	-
	470	442	419	52	28	14	17,00	HM 3080	MS 3076-80
	520	470	-	62	32	18	40,00	HM 80T	-
	520	470	440	62	32	18	38,00	HM 3180	MS 3180-84
Tr 410x5	480	452	-	52	32	14	19,00	HML 82T	-
Tr 420x5	490	462	-	52	32	14	19,20	HML 84T	-
	490	462	439	52	32	14	18,50	HM 3084	MS 3084
	540	490	-	70	32	18	47,00	HM 84T	-
	540	490	460	70	32	18	45,00	HM 3184	MS 3180-84
Tr 430x5	500	472	-	52	32	14	20,00	HML 86T	-
Tr 440x5	520	490	-	60	32	15	26,70	HML 88T	-
	520	490	463	60	32	15	26,00	HM 3088	MS 3088-92
	560	510	-	70	36	20	48,50	HM 88T	-
	560	510	478	70	36	20	46,50	HM 3188	MS 3188-92
Tr 450x5	520	490	-	60	32	15	24,00	HML 90T	-
Tr 460x5	540	510	-	60	32	15	28,00	HML 92T	-
	540	510	483	60	32	15	27,00	HM 3092	MS 3088-92
	580	540	-	75	36	20	51,30	HM 92T	-
	580	540	498	75	36	20	50,50	HM 3192	MS 3188-92
Tr 470x5	540	510	-	60	32	15	28,00	HML 94T	-
Tr 480x5	560	530	-	60	36	15	29,50	HML 96T	-
	560	530	503	60	36	15	28,00	HM 3096	MS 3096-500
	620	560	-	75	36	20	64,00	HM 96T	-
	620	560	528	75	36	20	62,00	HM 3196	MS 3196



MONDIALTECH

Forniture Industriali

Via Raimondo Dalla Costa 240/b
 41100 MODENA - ITALY
 Tel. +39 059 256090 Fax: +39 059 260883
 Codice R.E.A. 354046
 Partita IVA E. Codice Fiscale: 03061810366
 e-Mail: mondialtech@mondialtech.net
 Web: <http://www.mondialtech.net>



Vasto assortimento di Cuscinetti SKF - FAG

G-Filetto (mm)	D (mm)	D1 (mm)	D2 (mm)	B (mm)	S (mm)	T (mm)	Peso - Weight (Kg)	Codice - Code	Rosetta/staffa di sicurezza adatta
Tr 490x5	580	550	-	60	36	15	34,00	HML 98T	-
Tr 500x5	580	550	-	68	36	15	35,00	HML 100T	-
	580	550	523	68	36	15	33,50	HM 30/500	MS 3096-500
	630	580	-	80	40	23	66,00	HM 100T	-
	630	580	540	80	40	23	63,50	HM 31/500	MS 31/500
Tr 510x6	600	570	-	68	36	15	41,00	HML 102T	-
	650	590	-	80	40	23	71,00	HM 102T	-
Tr 520x6	600	570	-	68	36	15	37,00	HML 104T	-
Tr 530x6	630	590	-	68	40	20	44,00	HML 106T	-
	630	590	558	68	40	20	42,50	HM 30/530	MS 30/530-6
	670	610	-	80	40	23	73,00	HM 106T	-
	670	610	575	80	40	23	71,50	HM 31/530	MS 31/530
Tr 540x6	630	590	-	68	40	20	45,00	HML 108T	-
Tr 550x6	700	640	-	85	40	23	79,50	HM 110T	-
Tr, 560x6	650	610	583	75	40	20	44,50	HM 30/560	MS 30/560
	710	650	608	85	45	25	86,50	HM 31/560	MS 31/560-6
Tr 580x6	730	670	-	85	45	25	83,50	HM 116T	-
Tr, 600x6	700	660	628	75	40	20	52,50	HM 30/600	MS 30/5630-
	750	690	648	85	45	25	91,50	HM 31/600	MS 31/560-6
Tr 630x6	730	690	658	75	45	20	55,00	HM 30/630	MS 30/630
	800	730	-	95	50	28	115,00	HM 126T	-
	800	730	685	95	50	28	125,00	HM 31/630	MS 31/630
Tr 650x6	820	750	-	100	50	28	124,00	HM 130T	-
Tr, 670x6	780	740	703	80	45	20	68,50	HM 30/670	MS 30/670
	850	775	730	106	50	28	155,00	HM 31/670	MS 31/670
Tr, 710x7	830	780	742	90	50	25	91,50	HM 30/710	MS 30/710
Tr, 750x7	870	820	782	90	55	25	94,00	HM 30/750	MS 30/750-8
Tr, 800x7	920	870	832	90	55	25	99,50	HM 30/800	MS 30/750-8
Tr, 850x7	980	925	887	90	60	25	115,00	HM 30/850	MS 30/850-9
Tr, 900x7	1030	975	977,5	100	60	25	139,00	HM 30/900	MS 30/850-9
Tr, 950x8	1080	1025	1027,5	100	60	25	148,00	HM 30/950	MS 30/950



MONDIALTECH
Forniture Industriali

Via Raimondo Dalla Costa 240/b
41100 MODENA - ITALY
Tel. +39 059 250090 Fax. +39 059 260083
Codice R.E.A. 354046
Partita IVA E Codice Fiscale: 03061810366
e-Mail: mondialtech@mondialtech.net
Web: <http://www.mondialtech.net>

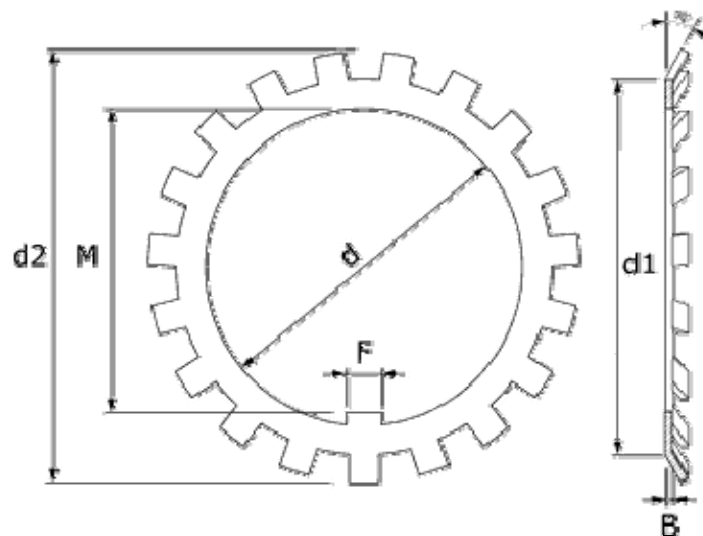
Vasto assortimento di Cuscinetti SKF - FAG

LK
Pagamenti & Qualità

CSC
Credenziali Specialisti

MONDIAL
Cuscinetti & Balli

Serie – Series - MB ed MBL



Codice - Code	d (mm)	d1 (mm)	d2 (mm)	B (mm)	F (mm)	M (mm)	Peso - Weight (g)
MB 0	10	13,5	21	1	3	8,5	1
MB 1	12	17	25	1	3	10,5	2
MB 2	15	21	28	1	4	13,5	3
MB 3	17	24	32	1	4	15,5	3
MB 4	20	26	36	1	4	18,5	4
MB 5	25	32	42	1,25	5	23	6
MB 6	30	38	49	1,25	5	27,5	8
MB 7	35	44	57	1,25	6	32,5	11
MB 8	40	50	62	1,25	6	37,5	13
MB 9	45	56	69	1,25	6	42,5	15
MB 10	50	61	74	1,25	6	47,5	16
MB 11	55	67	81	1,25	8	52,5	22
MB 12	60	73	86	1,5	8	57,5	24
MB 13	65	79	92	1,5	8	62,5	30
MB 14	70	85	98	1,5	8	66,5	32
MB 15	75	90	104	1,5	8	71,5	35
MB 16	80	95	112	1,75	10	76,5	46
MB 17	85	102	119	1,75	10	81,5	53
MB 18	90	108	126	1,75	10	86,5	61
MB 19	95	113	133	1,75	10	91,5	66



MONDIALTECH

Forniture Industriali

Via Raimondo Dalla Costa 240/b
 41100 MODENA - ITALY
 Tel. +39 059 250090 Fax: +39 059 260083
 Codice R.E.A. 354046
 Partita IVA E. Codice Fiscale: 03061810366
 e-Mail: mondialtech@mondialtech.net
 Web: <http://www.mondialtech.net>



Vasto assortimento di Cuscinetti SKF - FAG

Codice - Code	d (mm)	d1 (mm)	d2 (mm)	B (mm)	F (mm)	M (mm)	Peso - Weight (g)
MB 20	100	120	142	1,75	12	96,5	77
MB 21	105	126	145	1,75	12	100,5	83
MB 22	110	133	154	1,75	12	105,5	91
MB 23	115	137	159	2	12	110,5	107
MB 24	120	138	164	2	14	115	108
MBL 24		135	151	2	14	115	70
MB 25	125	148	170	2	14	120	115
MB 26	130	149	175	2	14	125	115
MBL 26		145	152	2	14	158	80
MB 27	135	160	185	2	14	130	140
MB 28	140	160	192	2	16	135	135
MBL 28		155	170	2	16	135	90
MB 29	145	172	202	3	16	140	230
MB 30	150	171	205	2	16	145	180
MBL 30		170	186	2	16	145	100
MB 31	155	182	212	3	16	147,5	260
MB 32	160	182	217	2,5	18	154	215
MBL 32		180	197	2,5	18	154	140
MB 33	165	193	222	3	18	158	280
MB 34	170	193	232	2,5	18	164	240
MBL 34		190	209	2,5	18	164	150
MB 36	180	203	242	2,5	20	174	260
MBL 36		200	215	2,5	20	174	160
MB 38	190	214	252	2,5	20	184	260
MBL 38		210	228	2,5	20	184	200
MB 40	200	226	262	2,5	20	194	280
MBL 40		222	245	2,5	20	194	220
MB 44	220	250	292	3	24	213	350
MB 48	240	270	312	3	24	233	450
MB 52	260	300	342	3	28	256	620
MB 56	280	320	362	3	28	273	750